

The strips are joined together, then pressed in half before sewing them onto the quilt. The joining seams on your strips should be pressed open to prevent the extra bulk when folding the binding over the edge of your quilt. A hand binding is sewn onto the top-side of the quilt with a machine and hand stitched on the backside once complete. A Machine Binding is sewn onto the backside of the quilt with a machine, then folded over the top and stitched down on the front side with a machine.

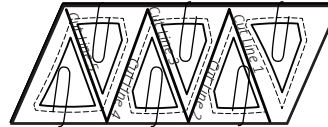
GENERAL CUTTING INSTRUCTIONS FOR BOOKLETS 2-6

Cutting Your Fabric: Read the information printed on each Template Layout Sheet before you begin cutting your fabrics. *Note the following:*

1. There are Cut Lines on each TLS referred to as Cut Lines 1, 2, 3, and etc. The TLSs ARE NOT sub-cut on these lines until AFTER they have been laid on top of the respective pieces of fabric.
2. The excess fabric around each template is not cut off until after the fabric pieces are sewn to the Foundation Papers. This is done with the Add-A-Quarter Ruler during paper piecing.
3. Large paper clips are used to hold the TLS onto a stack of fabric by placing a paper clip on each section around the edge of the TLS before cutting it apart. This keeps the template and fabrics together for each section after they are cut.

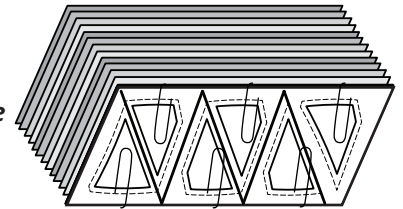
4. The Cutting Instruction Graphics show how many Templates or Template Layout Sheets can be cut from each strip, the instructions tell you the total pieces to cut. There is not a Template or TLS for each piece you cut. There are only enough included to layer up to (12) pieces of fabric beneath each template before cutting.

Number of Template Layout Sheets per Strip



Paper Clips are used to hold the Template Sheets on the their Fabric Stack.

(12) layers of fabric under each Template Layout Sheet.

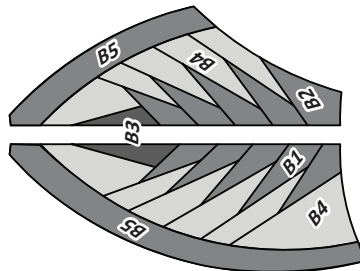


No further trimming is required until the paper piecing process begins.

UNIT CHARTS

► Group B, Color Layout: Fabric B1-B5

Cactus Flower



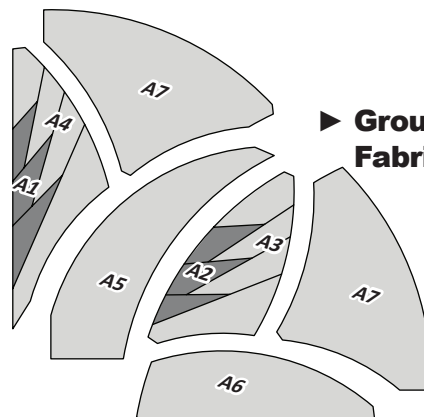
Book Six, Group A: Center Flower One Color Option, Yardage: By Block

GROUP-A FABRIC #	TOTAL YARDAGE INCHES	ASSIGNED COLOR
Fabric #A1: Unit A1: (TLS #2)	Total 1/8 yds (3-1/2")	Fabric Swatch
Fabric #A2: Unit A2: (TLS #4)	Total 1/8 yds (4-1/2")	Fabric Swatch
Fabric #A3: Unit A2: (TLS #3)	Total 1/8 yds (4-1/2")	Fabric Swatch
Fabric #A4: Unit A1: (TLS #1)	Total 1/8 yd (4-1/2")	Fabric Swatch
Fabric #A5: T-Temp A-3	Total 1/4 yd (6-1/2")	Fabric Swatch
Fabric #A6: T-Temp A-1	Total 1/8 yd (2-1/2")	Fabric Swatch
Fabric #A7: T-Temp A-2	Total 1/8 yd (4-1/2")	Fabric Swatch

Book Five, Group B: Cactus Flower One Color Option, Yardage: By Block

GROUP-B FABRIC #	TOTAL YARDAGE INCHES	ASSIGNED COLOR
Fabric #B1: Unit B1: (TLS #2)	Total 5/8 yds (20")	Fabric Swatch
Fabric #B2: Unit B2: (TLS #4)	Total 1/2 yds (18")	Fabric Swatch
Fabric #B3: Unit B1 & B2: (TLS #5)	Total 1/4 yds (6-1/2")	Fabric Swatch
Fabric #B4: Unit B1 & B2: (TLS #1 & TLS #3)	Total 1-3/8 yd (48")	Fabric Swatch
Fabric #B5: Unit B1 & B2: (T-TLS #1 & T-TLS #2)	Total 3/4 yd (23")	Fabric Swatch

► Group A, Color Layout: Fabric A1-A7

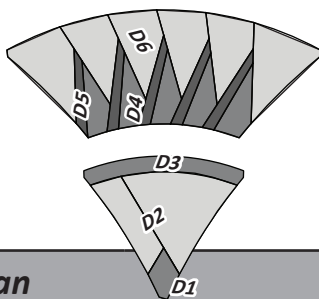


Center Flower
Fabric Facing Right-Side-Up

► **Group D, Color Layout:**
Fabric D1-D6

Fan

*Fabric Facing
Right-Side-Up*

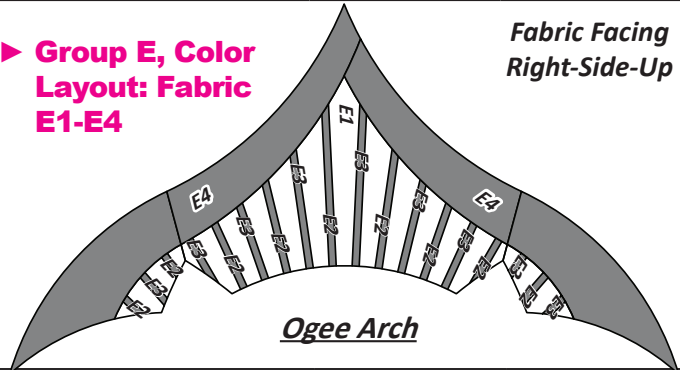


Book Three, Group D: Fan
One Color Option, Yardage: By Block

GROUP-D FABRIC # D1-D6	TOTAL YARDAGE INCHES	ASSIGNED COLOR
Fabric #D1: Unit D1: (Temp D1-2)	Total 1/8 yds (2-1/4")	Fabric Swatch
Fabric #D2: Unit D1: (TLS #1)	Total 3/8 yds (11")	Fabric Swatch
Fabric #D3: Unit D1: (Temp D1-4)	Total 1/4 yds (6-1/2")	Fabric Swatch
Fabric #D4: Unit D2: (TLS #4)	Total 3/8 yd (10-1/5")	Fabric Swatch
Fabric #D5: Unit D2: (TLS #3)	Total 3/8 yd (11")	Fabric Swatch
Fabric #D6: Unit D2: (TLS #2)	Total 5/8 yd (21")	Fabric Swatch

► **Group E, Color Layout:**
Fabric E1-E4

*Fabric Facing
Right-Side-Up*



Ogee Arch

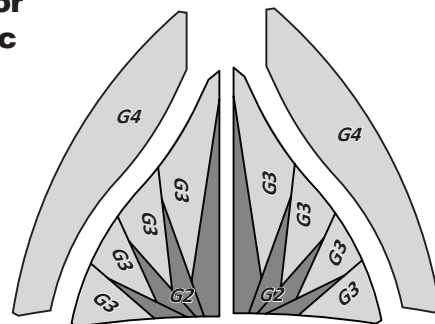
Book Two, Border Group E: Ogee Arch
One Color Option, Yardage: By Block

GROUP-E FABRIC # E1-E4	TOTAL YARDAGE INCHES	ASSIGNED COLOR
Fabric #E1: Unit E3, E4, E5: (TLS #2)	Total 1 yd (35")	Fabric Swatch
Fabric #E2: Unit E1 thru E5: (TLS #3)	Total 1/4 yd (8")	Fabric Swatch
Fabric #E3: Unit E1 thru E5: (TLS #4)	Total 1/4 yd (8")	Fabric Swatch
Fabric #E4: (T-Temp E1L, E2L, E1R, E2R)	Total 7/8 yd (29")	Fabric Swatch

► **Group G, Color Layout:**
Fabric G1-G4

Giant Leaf

*Fabric Facing
Right-Side-Up*



Book Two, Group G: Giant Leaf, One Color Option, Yardage: By Block

GROUP-G FABRIC #	TOTAL YARDAGE INCHES	ASSIGNED COLOR
Fabric #G1: Unit GR: Temp GR 2, 3, 5, & 7	Total 1/2 yd (15-1/2")	Fabric Swatch
Fabric #G2: Unit GL: Temp GL 2, 3, 5, & 7	Total 1/2 yd (15-1/2")	Fabric Swatch
Fabric #G3: Unit GL & GR: (TLS #1 & #2)	Total 7/8 yd (31")	Fabric Swatch
Fabric #G4: (T-Temp GR & GL)	Total 3/4 yd (24")	Fabric Swatch

► **Group F, Color Layout: Fabric F1-F4**
(Graphic Next Page)

Book Two, Group F: Vintage Fan
One Color Option, Yardage: By Block

GROUP-F FABRIC #	TOTAL YARDAGE INCHES	ASSIGNED COLOR
Fabric #F1: (T-Temp F1L-F3L & F1R-F3R)	Total 7/8 yd (28")	F1: Fabric Swatch
Fabric #F2:a T-Temp F5L, F5R, F6L, F6R	Total 1/4 yd (7")	F2:a Fabric Swatch
Fabric #F2:b T-Temp F4L, F4R	Total 1/8 yd (3-1/2")	F2:b Fabric Swatch
Fabric #F3:a Units F1-F3 [L/R] (TLS) #1 & #2 Temp FL5, FR5	Total 1 yd (32")	F3:a Fabric Swatch
Fabric #F3:b Units F1-F3 [L/R] (TLS) #5	Total 1/2 yd (16")	F3:b Fabric Swatch
Fabric #F4:a Units F1-F3 [L/R] (TLS) #5	Total 1/2 yd (16")	F4:a Fabric Swatch
Fabric #F4:b Units F1-F3 [L/R] (TLS) #5	Total 1/4 yd (8")	F4:b Fabric Swatch