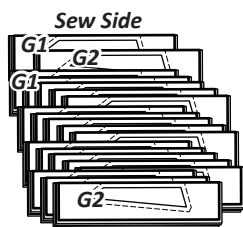


► **Section 3:**

- (1) Group 1: Sec. 3 Temp C-3.
- (1) Group 2: Sec. 3 Temp C-3.
- (1) Group 1: Sec. 3 Temp C-3.
- (1) Group 2: Sec. 3 Temp C-3.
- (1) Group 1: Sec. 3 Temp C-3.
- (1) Group 2: Sec. 3 Temp C-3.
- (1) Group 1: Sec. 3 Temp C-3.
- (1) Group 2: Sec. 3 Temp C-3.
- (1) Group 1: Sec. 3 Temp C-3.
- (1) Group 2: Sec. 3 Temp C-3.
- (1) Group 1: Sec. 3 Temp C-3.
- (1) Group 2: Sec. 3 Temp C-3.



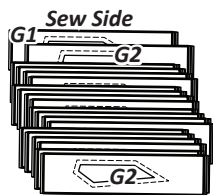
► **Section 2:**

- (1) Group 1: Sec. 2 Temp C-2.
- (1) Group 2: Sec. 2 Temp C-2.
- (1) Group 1: Sec. 2 Temp C-2.
- (1) Group 2: Sec. 2 Temp C-2.
- (1) Group 1: Sec. 2 Temp C-2.
- (1) Group 2: Sec. 2 Temp C-2.
- (1) Group 1: Sec. 2 Temp C-2.
- (1) Group 2: Sec. 2 Temp C-2.
- (1) Group 1: Sec. 2 Temp C-2.
- (1) Group 2: Sec. 2 Temp C-2.
- (1) Group 1: Sec. 2 Temp C-2.
- (1) Group 2: Sec. 2 Temp C-2.

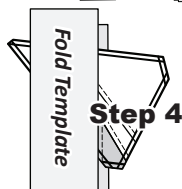
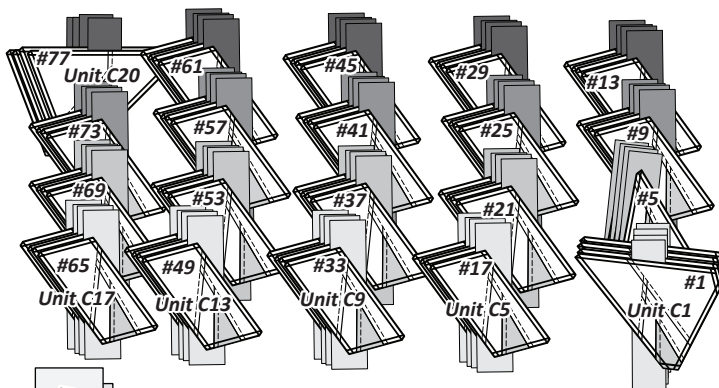


► **Section 1:**

- (1) Group 1: Sec. 1 Temp C-1.
- (1) Group 2: Sec. 1 Temp C-1.
- (1) Group 1: Sec. 1 Temp C-1.
- (1) Group 2: Sec. 1 Temp C-1.
- (1) Group 1: Sec. 1 Temp C-1.
- (1) Group 2: Sec. 1 Temp C-1.
- (1) Group 1: Sec. 1 Temp C-1.
- (1) Group 2: Sec. 1 Temp C-1.
- (1) Group 1: Sec. 1 Temp C-1.
- (1) Group 2: Sec. 1 Temp C-1.
- (1) Group 1: Sec. 1 Temp C-1.
- (1) Group 2: Sec. 1 Temp C-1.
- End with, stack (1) Group 2: Sec. 1 Temp C-1.

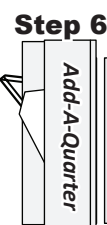


Step 3: Reorder your papers with Paper #80 on the bottom, stacking in reverse numerical order, ending with Paper #1 on top.



Step 4: Then, place the fold template over the top of Sec. 1. Line the edge up with the solid black line marked Line 1.

Step 5: Fold the paper back over the top of the fold template.



Step 6: Place the *Add-A-Quarter* ruler next to the folded paper and trim the fabric with your rotary cutter.



Step 7: Place the fabric piece for Sec. 2 (this should be Fabric C3:d for Unit C1), *right-side up* next to the folded back paper.



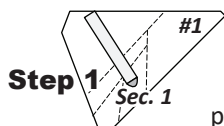
Step 8: Lift the paper, and slide the fabric under Sec. 1, line the sew-side up with the trimmed seam allowance. Repeat **Steps 1-8** for all (80) units before moving onto Step 9. Work in numerical order (Paper #2 to Paper #80) so your fabrics are sewn to the correct paper. You should have used all of your Sec. 2 pieces now. If you have stacked the papers as you go along nicely Paper #80 should be on top.



To finish the stacking, carefully place the Sec. 4 pieces on top of Section 5, the Section 3 pieces on top of Section 4, then Sec. 2, and finish with Sec. 1 on top. You are now ready to begin paper piecing!

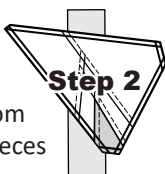
■ **FOUNDATION PAPER PIECING: UNIT C1 TO C20, BAG #C1**

NOTE - Tracing the Dashed Lines: Place the foundation paper onto a light table. Flip the foundation paper over and trace the dashed lines printed on the front side of the foundation paper, onto the backside of the paper.



Step 1: The first piece of fabric is placed *wrong-side-up* on your table. Glue is used to adhere the fabric to the backside of the paper labeled as Paper #1 (Unit C1).

Step 2: Lift the foundation paper, slide the fabric under Sec. 1. Make sure you are starting with the first Fabric in Group 2, which should be Fabric C2:h for Unit C1. **Repeat Steps 1 and 2** for each of the (80) foundation units. Work in numerical order (from Paper #2 to Paper #80). All of your Section 1 pieces should be added now.

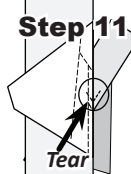
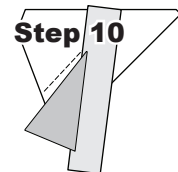


Step 9: Take the (80) units to your machine and begin sewing Unit C20 on Line 1 Paper #80. Sew the units in reverse numerical order, ending with Unit C1. The stitches should start and stop about 1/8" past the beginning and the end of each stitch line. Complete the sewing on each of the (80) Units before moving onto the next step.

NOTE - Bobbin Thread: Double check your bobbin!

NOTE - Trimming the Threads: Sewing past the ends of your sew line makes it possible to cut the thread ends off each time you trim with your *Add-A-Quarter* ruler.

Step 10: Loosen the glue under Sec. 1, then press the fabric pieces open on the backside of each paper. Press open all (80) units. Restack them so that Paper #80 is on the bottom and Paper #1 is on the top.



Step 11: Beginning again with Paper #1, Unit C1. Position the fold template over the top of Sec. 1 and 2, lining the edge up with Line 2. Fold the paper back and tear the paper along the stitches on Line 1. Stop tearing when you hit the fold template.