

GROUP E SUB-CUTTING INFORMATION

Step 1: From Fabric E1, sub-cut the following strips and place them into the appropriate bags:

- (2) 13" x 42" strips for Bag #E1R with [Unit E1R]
- (2) 10-1/2" x 42" strips for Bag #E1L with [Unit E1L]
- (2) 7-1/2" x 42" strips for Bag #E2R with [Unit E2R]
- (2) 8" x 42" strips for Bag #E2L with [Unit E2L]
- (2) 14" x 42" strips for Bag #E3R with [Unit E3R]
- (2) 13" x 42" strips for Bag #E3L with [Unit E3L]

It is important to understand that you can get (2) Template Layout Sheet cuts from EACH strip above since you are using the same color. This means, that to make (4) units, you need (2) strips.

Step 2: There are (2) 66" x 42" strips cut from Fabric E2. From each strip, sub-cut the following strips and place them into the appropriate bags (you will end up with (2) strips of each size when the cutting is complete:

- (1) 13" x 42" strip for Bag #E1L with [Unit E1L]
- (1) 10-1/2" x 42" strip for Bag #E1R with [Unit E1R]
- (1) 7-1/2" x 42" strip for Bag #E2L with [Unit E2L]
- (1) 8" x 42" strip for Bag #E2R with [Unit E2R]
- (1) 14" x 42" strip for Bag #E3L with [Unit E3L]
- (1) 13" x 42" strip for Bag #E3R with [Unit E3R]

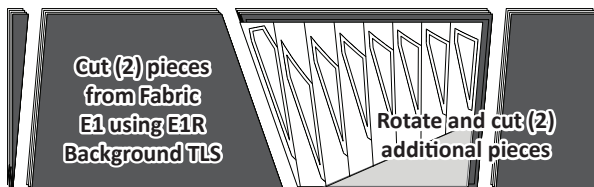
Step 3: From Fabric E3, sub-cut (8) 9" x 42" strips and place these into Bag #E4.

CUTTING INSTRUCTIONS, UNITS E1R AND E1L, BAGS #E1R & #E1L

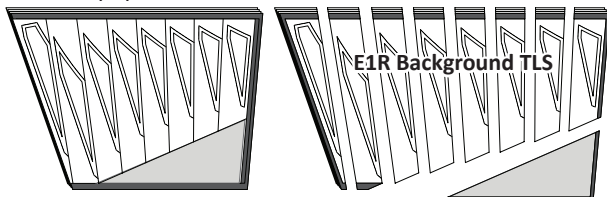
Step 1: Remove the (2) 13" x 42" strips from Fabric E1 and stack these *right-side-up* on your cutting table.

Step 2: Place the *Unit E1R Background Template Layout Sheet* on the top of the stack on the far left of the strips and trim around the outside edge.

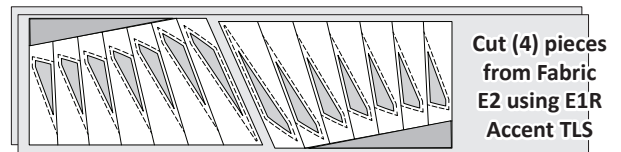
Step 3: Reposition the Layout Sheet as shown in the graphic below to cut a total of (4) pieces the same size as the Template Layout Sheet.



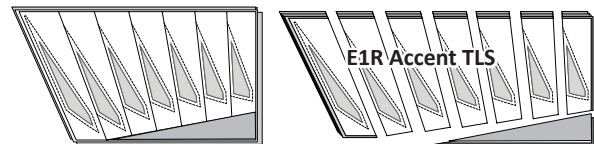
Step 4: Restack the (4) pieces of fabric *right-side-up* beneath the *Unit E1R Background Template Layout Sheet*. Then, slice through the paper on each cut line to separate the individual sections. Paper clips are used to keep the fabric and template pieces together. Place these pieces back in Bag #E1R with the E1R foundation papers.



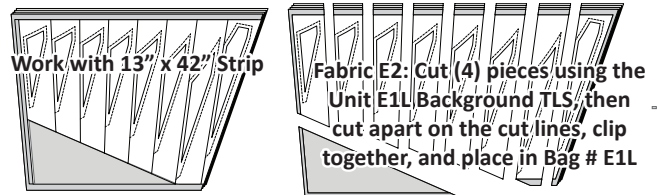
Step 5: Remove the (2) 10-1/2" x 42" strips cut from Fabric E2. Stack the strips facing *right-side up*. Place the *Unit E1R Accent Template Layout Sheet* on the top of the stack and cut (4) pieces the size of the TLS.



Step 6: Restack the (4) pieces *right-side-up*. Trim around the outside edge. Then, slice through the paper on each cut line to separate the individual sections. Paper clips are used to keep the fabric and template pieces together. Place these pieces back in Bag #E1R with the E1R foundation papers.



Step 7: The cutting process is identical for Unit #E1L. However, the Template Layout Sheets are mirror images to the graphics shown above and you are working with the fabrics and templates in Bag #E1L. Plus you will cut the backgrounds from Fabric E2 and the Accents from Fabric E1. Graphics showing what you should expect your graphics to look like for Unit E1L for Steps 4 and 6 as outlined above, are shown below.



CUTTING INSTRUCTIONS, UNITS E2R & E2L, BAGS #E2R & #E2L

Step 1: Remove the (2) 7-1/2" x 42" strips cut from Fabric E1 and stack these *right-side-up* on your cutting table.

Step 2: Cut (4) pieces the same size as the *Unit E2R Background Template Layout Sheet*, then reposition the pieces beneath the Layout Sheet, cut the Layout Sheet and fabrics beneath apart on the cut lines to separate the individual paper sections. Clip together, then place these pieces back in Bag #E2R with the E2R foundation papers.

