

CUTTING INSTRUCTIONS: BAG #AC4, UNITS S1 & S2

► Fabric AC4 and AC5: (Temp S-1)

Step 1: Cut (2) 2-1/2" x 42" strips from each Fabric AC4 and AC5. Open and stack the strips facing *right-side-up* into (2) stacks.

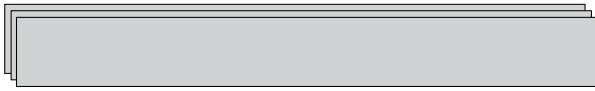


Step 2: Unit S1 & S2, Template S1 is used to cut (20) diamond pieces from each Fabric. Sort by fabric, then place these pieces in Bag #AC4.



► Fabric AC6: (TLS #6)

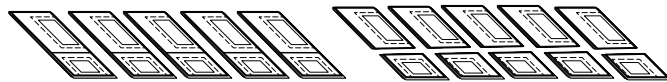
Step 3: Cut (4) 5-1/4" x 42" strips from Fabric AC6. Open and stack the strips facing *right-side-up*.



Step 4: Unit S1 & S2 Template Layout Sheet #6 is used to cut (10) stacks of (4) pieces matching the size and shape of the (TLS).



Step 5: Stack (8) pieces beneath each (TLS). Clip each section to the fabric beneath and Cut Line 1 to separate the templates. Place these pieces with the Unit S1 & S2 foundation papers in Bag #AC3.



► Fabric AC7: (Temp S-4 & S-5)

Step 6: Cut (10) 1-1/2" x 42" strips from Fabric AC7. Open and stack the strips facing *right-side-up*.



Step 7: Unit S1 & S2 Template S-4 and S-5 are used to cut (4) stacks of (10) pieces matching the size of each (TLS), for a total of (40).



Step 8: Stack and clip (8) pieces beneath each of (5) Templates in your bag. Place these pieces with the Unit S1 & S2 foundation papers in Bag #AC4.

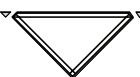
► Fabric AC8: (T-Temp AC-1)

Step 1: Cut (2) 4-1/2" x 42" strips from Fabric AC8. Open and re-stack the strips facing *right-side up* into one stack.

Step 2: T-Template AC-1 is used to cut (16) triangles.

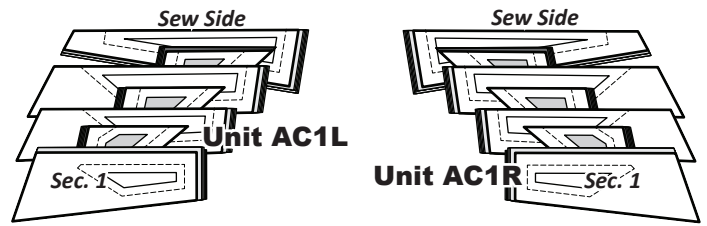


Step 3: Smart Corners have been added to the templates which requires additional trimming on both ends. Place these pieces into Bag #AC1.



► Sorting and Stacking: Units AC1L & AC1R, Bag #AC1 & Bag #AC2

Sort the pieces in both Bags #AC1 and #AC2 on your table, arranging the section #'s in numerical order with the templates and fabric pieces facing *right-side-up*. Align the sew-sides at the top. The stacking begins with the largest Sec. # on the bottom finishing with Sec. 1 on the top.

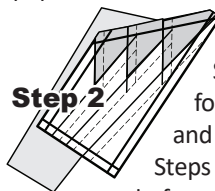


PAPER PIECING: UNIT AC1L

NOTE - Tracing the Dashed Lines: Place the foundation paper onto a light table. Flip the foundation paper over and trace the dashed lines printed on the front side of the foundation paper, onto the backside of the paper.



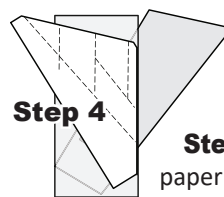
Step 1: Find Sec. 1 on the foundation paper. Place a small amount of fabric glue on the *backside* of the paper under Sec. 1.



Step 2: Position the first piece of fabric for Sec. 1 *wrong-side-up* on your table. Lift the foundation paper, slide the fabric under Sec. 1 and glue the fabric to the backside of the paper.

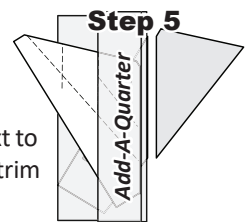
Steps 1 and 2 are repeated for each foundation unit before moving onto Step 3.

NOTE - Fabric Placement: The *wrong-side* of the fabric is against the backside of the paper. The fabric must extend beyond the edges of the dashed lines to cover the underneath side of Sec. 1.



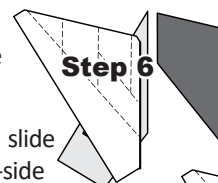
Step 3: Place the fold template over the top of Sec. 1. Line the edge up with the solid black line marked Line 1.

Step 4: Then, fold the paper back over the top of the fold template.

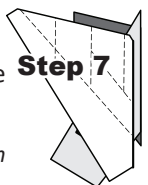


Step 5: Place the *Add-A-Quarter* ruler next to the folded back section lip-side down and trim the fabric with your rotary cutter.

Step 6: Place the fabric piece for Sec. 2, *right-side-up* next to the folded back paper as shown.



Step 7: Lift the foundation paper, slide the fabric under Sec. 2 lining the sew-side up with the trimmed seam allowance. Make sure the fabric extends beyond the boundaries of the dashed lines for Sec. 2.



NOTE - Chain Piecing: Repeat Steps 3-7 for each foundation paper before moving onto Step 8.