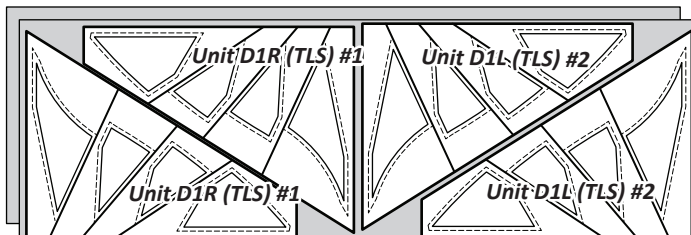
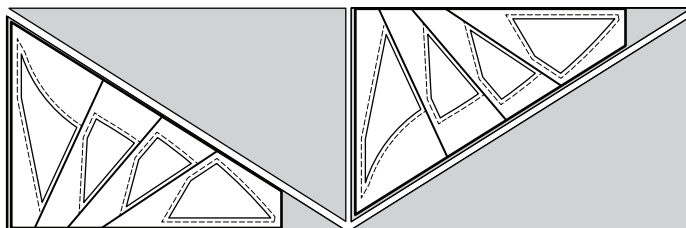


► **Fabric D1: (TLS) #1 & (TLS) #2**

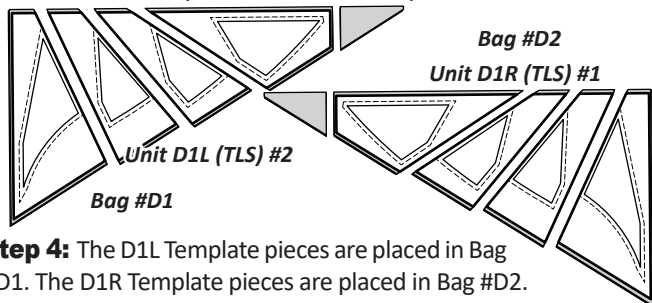
Step 1: Cut and stack (2) 13-1/2" by 42" strips facing *right-side up*.



Step 2: *Unit D1R, Template Layout Sheet #1* and *Unit D1L Template Layout Sheet #2* are used to cut (4) pieces, matching the size and shape of each (TLS). *Template Layout Sheet #1* is used to cut the first four pieces. *Template Layout Sheet #2* is used to cut the last four pieces. We have provided you with only one template so you will need to reposition the template for each cut.



Step 3: Paper clip are used to clip each section to the fabric to keep the template pieces from moving in the cutting process. The cutting is completed by slicing through the paper and fabric on each CUT LINE to separate the individual pieces.



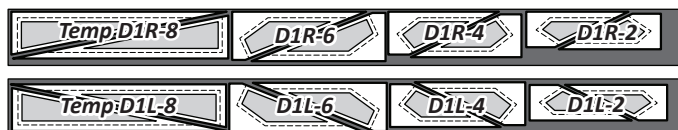
Step 4: The D1L Template pieces are placed in Bag #D1. The D1R Template pieces are placed in Bag #D2.

► **Fabric D2: Templates D1R-2, 4, 6, & 8, and D1L-2, 4, 6, & 8**

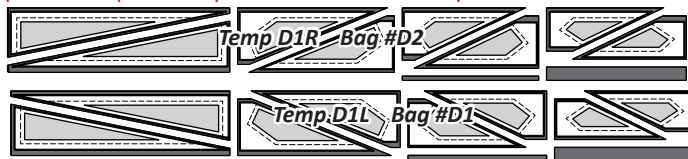
Step 1: Cut (4) 3-1/2" by 42" strips. Stack the strips facing *right-side up* into two groups of (2) strips each.



Step 2: Position the (4) templates in the order shown below starting with Temp D1R-8 and Temp D1L-8 on the far left of each stack of strips. The graphic below shows how you will position each template, then reposition it to get all the pieces out of the one strip.



Step 3: Cut Template D1R-8, then flip it and cut the second cut. Then, cut the D1R-6 pieces, then the D1R-4 piece, then the D1R-2 pieces. Repeat this process for the D1L templates.

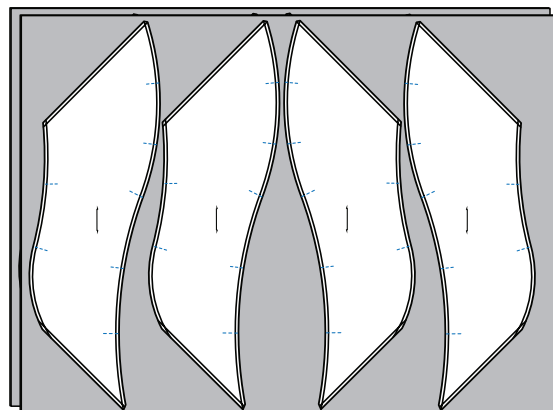


Step 4: The template pieces for each size are clipped together then placed in their assigned bags. The D1L Template pieces are placed in Bag #D1. The D1R Template pieces are placed in Bag #D2.

► **Fabric D3: T-Templates DR & DL**

Step 1: Cut and stack (2) 31" by 42" strips facing *right-side up*. *T-Template DL* is used to cut the first (4) pieces from your strips.

T-Template DR is used to cut the last (4) pieces. Reposition the templates for each cut.



Step 2: Paper clips can be used to keep the template and fabric piece together while marking or sewing the registration lines.

■ **REGISTRATION LINES (TRP)**

Step 1: The T-Templates have registration lines (marked as dotted lines with a TRP label). Make sure the T-Template is stacked on top of the same sized fabrics and all of the edges are perfectly aligned in each set. The *T-Templates* are shown above.

Step 2: Unthread your machine and replace the needle with a size 90/80. With *T-Template DR* set at your machine, perfectly aligned with the fabric beneath, sew through the paper and the fabrics with just the needle, marking the registration lines on each fabric.

Step 3: Change the needle back to the 70/80 needle. Re-thread the machine and set the stitch length = 2.8 and sew on the lines marked by the needle-punching. Repeat this process with each T-Template set. Place the pieces into Bag #D7 when the registration lines have been added.

NOTE - Marking Pencil Option: Double check the needle punch holes against the T-Template before sewing each piece. If the needle punch holes do not match because the pieces weren't perfectly aligned when punched, you may need to use a marking pencil and mark the registration lines on the backside of the fabric.