

JNQ00242C002 Mixer Pattern

Wall or Queen 68" Mixer Border Pattern

GROUP C: SATIN AND LACE BORDER INSTRUCTIONS

Ziploc Storage Bags: You will need (3) Bags to complete the organization for these instructions. Label the Bags as follows to stay organized while cutting the Foundation Units and Templates.

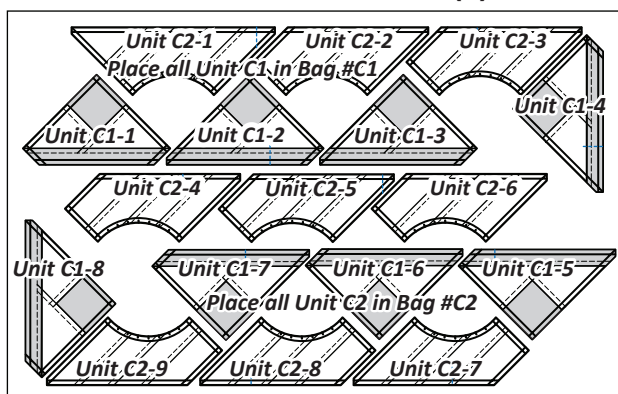
- Bag #C1: (4) Units C1-1 to C1-8 and the associated cutting templates.
- Bag #C2: (4) Unit C2-1 to C2-9 and the associated cutting templates.
- Bag #C3: T-Template C1

► Preparing the Foundation Papers:

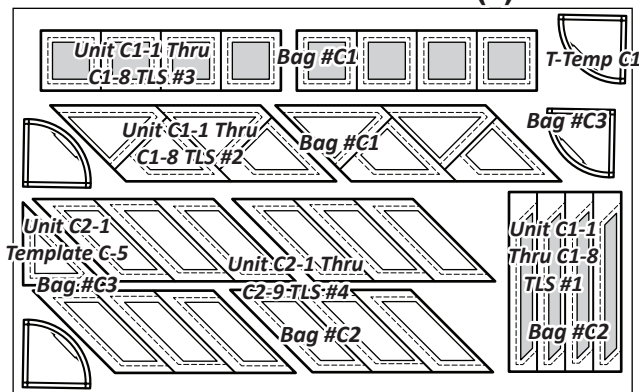
Foundation Papers: This booklet includes enough foundation papers and templates to complete (4) 5-3/4" by 68" pieced border strips. The foundation papers are printed on newsprint. Newsprint is lightweight and tears away from your stitches without damaging the threads. Please pull apart this package and check, at this time, to make sure your pattern includes all of the newsprint listed below.

Step 1: The Foundation Units are cut out and sorted into Bags #C1 and #C2 [NP 614]. All the cutting Templates on TP 420 go into Bag #C1 and those on TP 421 go into Bag #C2. See the newsprint graphics that follow for information on how to organize your units and templates into bags. *Refer back to General Information for Foundation papers and templates in the Introduction Booklet for additional instructions on how to prepare your foundation papers and templates.

► (4) NP 614



► (1) TP 422



► Satin and Lace Border Fabric Information:

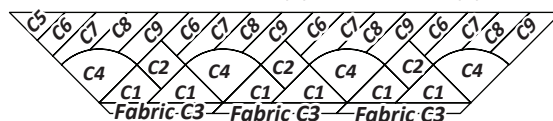
The table that follows includes yardage, fabric numbers, and a reference to which fabrics go with each TLS to complete the Group C Border Units. This table is your guide for not only selecting your own colors, but keeping you organized. Don't forget to cut a swatch of your chosen fabric to paste in the box in the Assigned Colors column! Reference the Color Layout graphic for a graphical representation of where each of the fabrics go.

Units C1 & C2, (4) Border Groups

GROUP-C FABRIC #	YARDAGE INCH	ASSIGNED COLOR
<u>Fabric C1</u> Unit C1-1 to C1-8 (TLS #2)	<u>7/8 yd</u> or (27")	Fabric Swatch
<u>Fabric C2</u> Unit C1-1 to C1-8 (TLS #3)	<u>3/8 yd</u> or (10-1/2")	Fabric Swatch
<u>Fabric C3</u> Unit C1-1 to C1-8 (TLS #1)	<u>3/8 yd</u> or (12")	Fabric Swatch
<u>Fabric C4</u> T-Template C1	<u>1/2 yd</u> or (16")	Fabric Swatch
<u>Fabric C5</u> Unit C2-1 Template C-5	<u>1/8 yd</u> or (3-1/2")	Fabric Swatch
<u>Fabric C6</u> Unit C2-1 to C2-9, Sec. 1 (TLS #4)	<u>5/8 yd</u> or (18")	Fabric Swatch
<u>Fabric C7</u> Unit C2-1 to C2-9, Sec. 2 (TLS #4)	<u>5/8 yd</u> or (18")	Fabric Swatch
<u>Fabric C8</u> Unit C2-1 to C2-9, Sec. 3 (TLS #4)	<u>5/8 yd</u> or (18")	Fabric Swatch
<u>Fabric C9</u> Unit C2-1 to C2-9, Sec. 4 (TLS #4)	<u>5/8 yd</u> or (18")	Fabric Swatch

► Color Layout (Back-side) View

Units C2-1 to C2-9 (4) Shown, Make (9)



Units C2-1 to C2-8 (3) Shown, Make (8)

NOTE - Why the Back-side View?: This view of the Fabric Reference matches the print-side of your paper. This graphic makes it easier to follow where you place your fabric swatches when you mark your papers.

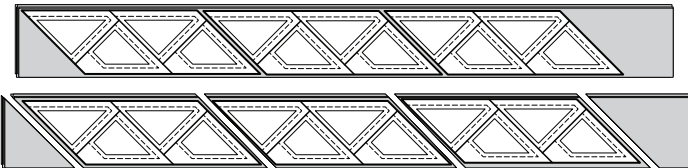
CUTTING INSTRUCTIONS

► Fabric C1, TLS #2:

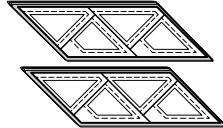
Step 1: Cut and stack (6) 4-1/2" by 42" strips *right-side up*.



Step 2: The *Unit C1-1 to C1-8 TLS #2* from Bag #C1 is placed onto the stack as shown. Use the TLS #2 as a guide to cut (3) stacks of parallelograms the size and shape of the TLS.

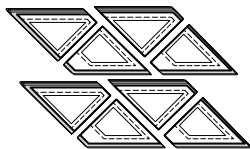


Step 3: Separate the parallelograms into (2) stacks of (8). Discard the remaining pieces.



Step 4: Cut the Template Layout Sheets apart on the Cut Lines, moving in numerical order until all the pieces are cut apart.

Step 5: Clip the pieces together with the Template on top and place the pieces back into Bag #C1.

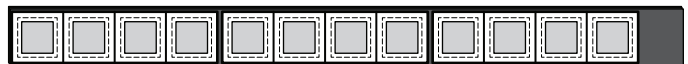


► Fabric C2, TLS #3:

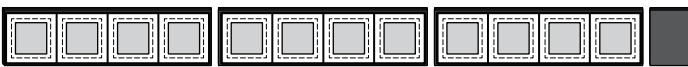
Step 1: Cut and stack (3) 3-1/2" by 42" strips *right-side up*.



Step 2: The *Unit C1-1 to C1-8 TLS #3* from Bag #C1 is placed onto the stack as shown. Use the TLS #3 as a guide to cut (3) stacks of rectangles the size and shape of the TLS.



Step 3: Restack the rectangles into (1) stack of (8) and place the TLS on top. Discard the remaining pieces.



Step 4: Cut the Template Layout Sheet apart on the Cut Lines, moving in numerical order until all the pieces are cut apart. Clip the pieces together and place back into Bag #C1.

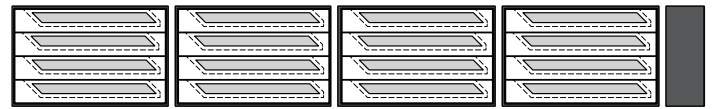


► Fabric C3, TLS #1:

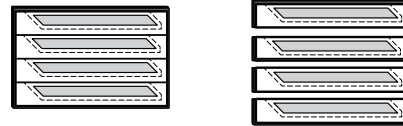
Step 1: Cut and stack (2) 6" x 42" strips *right-side-up*.



Step 2: Use *Unit C1-1 Thru C1-8 Template C-4 Layout Sheet #1* from Bag #C1 as a guide to cut (4) rectangles the size and shape of the TLS.



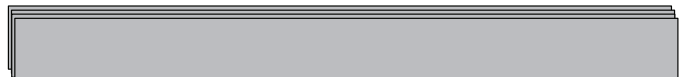
Step 3: Re-stack the pieces into (1) stack of (8). Place the TLS on top and cut on the cut lines in numerical order to separate the Templates.



Step 4: Clip the pieces together with the templates on top and Place into Bag #C1.

► Fabric C4, T-Template C1:

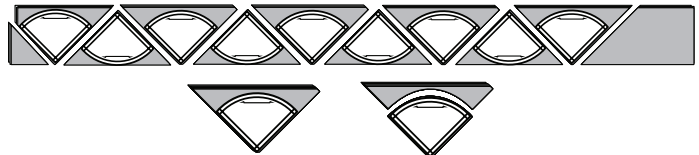
Step 1: Cut and stack (4) 4" x 42" strips *right-side-up*.



Step 2: Use *T-Template C1* from Bag #C3 to cut on top of the stack as shown.



Step 3: Cut between the T-Templates as shown, then carefully trim the curved edge around the top. If (4) fabrics is too much to cut through, then separate the pieces. It is important for you to get a perfect cut. Extra T-Templates have been provided in case you damage one.

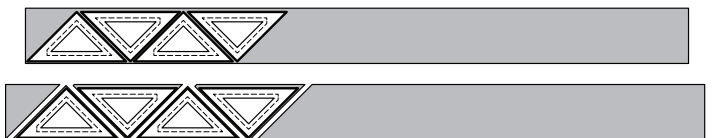


Step 4: Clip the pieces together with (1) *T-Template C1* on top. Place into Bag #C3.

► Fabric C5, Template C-5:

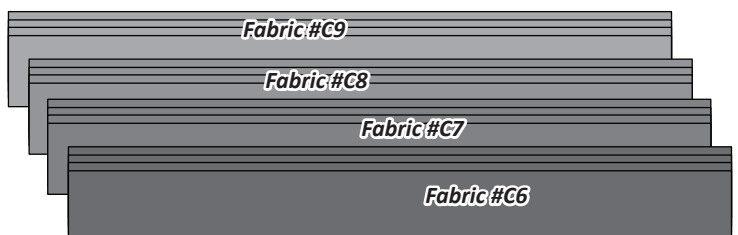
Step 1: Cut and stack (1) 4-1/2" x 42" strip *right-side-up*.

Step 2: Use *Template C-5* from Bag #C2 to cut (4) pieces the size of the template. Place back into Bag #C2.

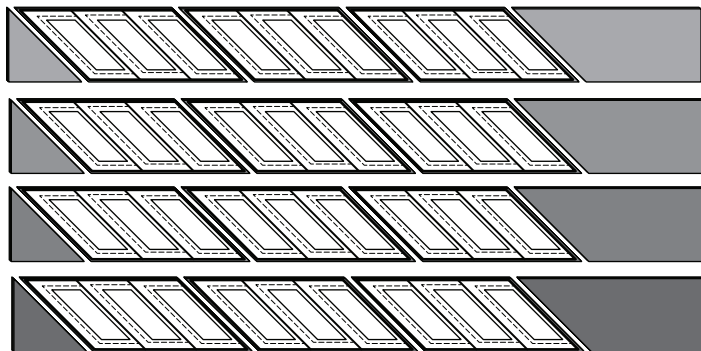


► Fabrics C6, C7, C8, and C9, TLS #4:

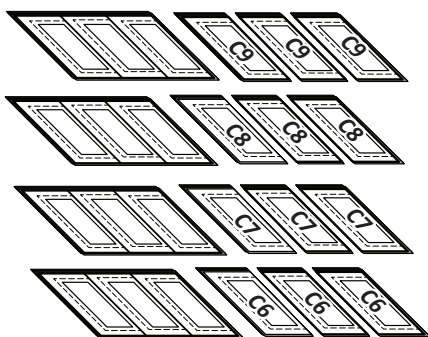
Step 1: Cut and stack (4) 4-1/2" x 42" strips from each of the (4) fabrics. Then, stack them *right-side-up* by fabric.



Step 2: Use *Unit C2-1 Thru C2-9 Template C-6 Layout Sheet #4* from Bag #C2 as a guide to cut (3) parallelograms the size and shape of the TLS from each Fabric.



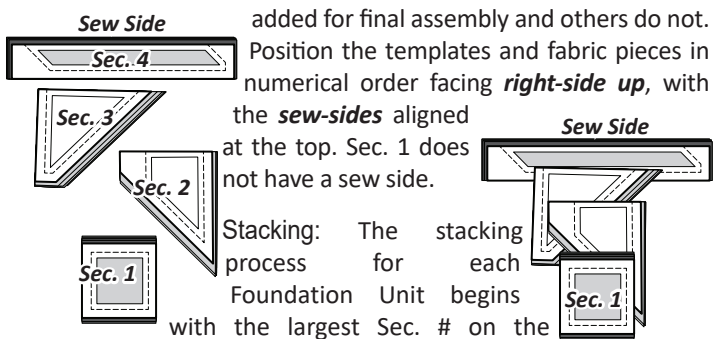
Step 3: Re-stack the pieces, by fabric, into (4) stacks of (9) parallelograms. Place the TLS on top and cut on the cut lines in numerical order to separate the Templates. At this point, we recommend labeling your Templates with the Fabric Reference C6 to C9 so that you can make sure everything stays in the same order as you piece the unit.



Step 4: Clip the pieces together with the templates on top and Place into Bag #C2.

STACKING: UNIT C1-1 TO C1-8, BAG #C1

The C1-1 to C1-8 papers are all stacked and sewn at the same time. They are only different in that some have TRP lines that must be added for final assembly and others do not.

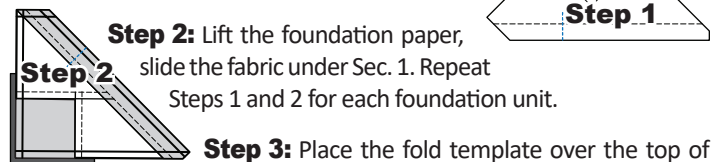


Position the templates and fabric pieces in numerical order facing *right-side up*, with the *sew-sides* aligned at the top. Sec. 1 does not have a sew side.

FOUNDATION PAPER PIECING: UNIT C1-1

NOTE - Tracing the Dashed Lines: Place the foundation paper onto a light table. Flip the foundation paper over and trace the dashed lines printed on the front side of the foundation paper, onto the backside of the paper.

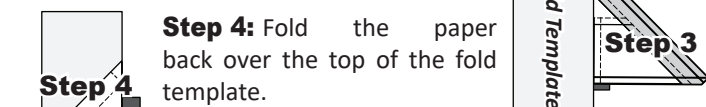
Step 1: The first piece of fabric is placed *wrong-side-up* on your table. Glue is used to adhere the fabric to the backside of the paper.



Step 2: Lift the foundation paper, slide the fabric under Sec. 1. Repeat Steps 1 and 2 for each foundation unit.

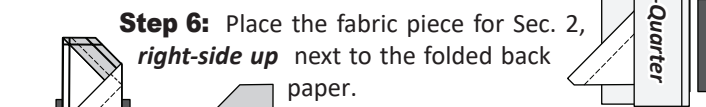
Step 3: Place the fold template over the top of

Sec. 1. Line the edge up with the solid black line marked Line 1.



Step 4: Fold the paper back over the top of the fold template.

Step 5: Place the *Add-A-Quarter* ruler next to the folded paper and trim the fabric with your rotary cutter.

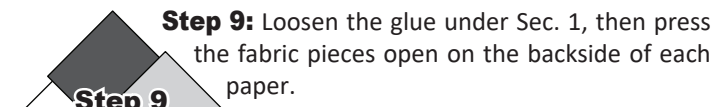


Step 6: Place the fabric piece for Sec. 2, *right-side up* next to the folded back paper.

Step 7: Lift the paper, and slide the fabric under Sec. 1, line the sew-side up with the trimmed seam allowance. Repeat *Steps 1-7* for each foundation paper before moving onto Step 8.

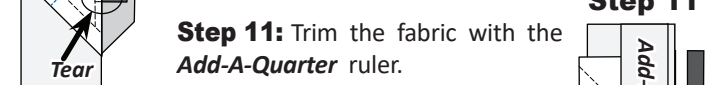
Step 8: Sew on Line 1. The stitches should start and stop about 1/8" past the beginning and the end of each stitch line. Complete the sewing on each Unit before moving onto the next step.

NOTE - Trimming the Threads: Sewing past the ends of your sew line makes it possible to cut the thread ends off each time you trim with your *Add-A-Quarter* ruler.



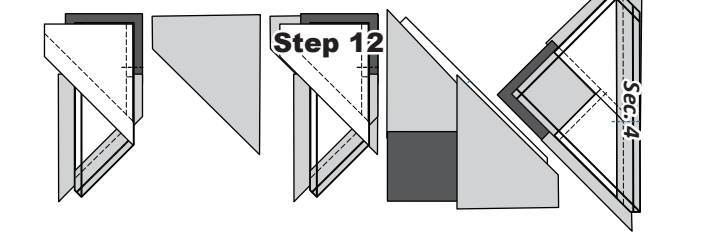
Step 9: Loosen the glue under Sec. 1, then press the fabric pieces open on the backside of each paper.

Step 10: Position the fold template over the top of Sec. 1 and 2, lining the edge up with Line 2. Fold the paper back and tear the paper along the stitches on Line 1. Stop tearing when you hit the fold template.



Step 11: Trim the fabric with the *Add-A-Quarter* ruler.

Step 12: Position the third fabric piece *right-side up* next to the paper. Lift the paper and slide the fabric under Sec. 3. Open the paper, sew on Line 2 and press. Add Sec. 4 in the same manner.



Transition & Registration Points (TRP)

Step 1: After the paper piecing is complete for Bag #C1, the registration lines are sewn on the foundation papers with a basting stitch set at about 2.8. TRP Lines are only printed on a few specific units. The transition points that we have added match up with the Units and Templates in Group B and Group D.

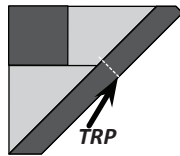
Satin & Lace Border

JNQ00242C002
NP 614: 4 Pages
TP 422: 1 Page

JNQ00242C002 Mixer Pattern

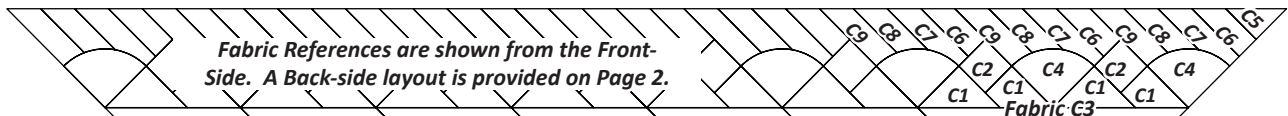
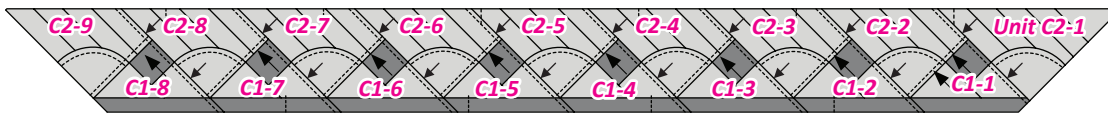
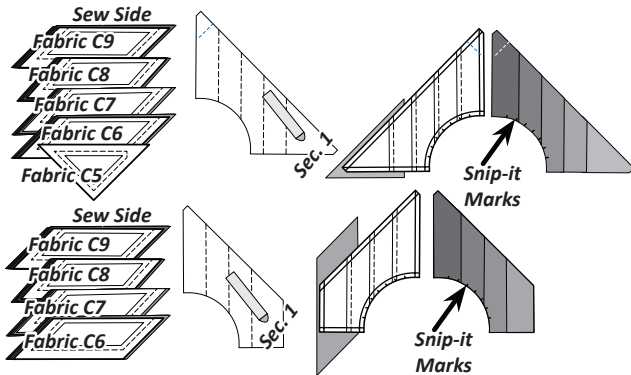
NOTE - TRP Lines: If you are not making a Queen Size quilt you don't need to sew the (TRP) lines along the outside edges of the C Units that would normally match up with the units in Group D, but you will need them along the inside edge for Group B.

Trimming: The excess fabric and paper is trimmed off around the perimeter of each unit after the basting stitches are sewn. After the papers are trimmed, the thread ends on each of the basting stitches are cut off on the backside of the paper. On the fabric side, the thread ends are trimmed leaving a tail about 1/2" long.



STACKING AND PIECING UNIT C2, BAG #C2

The graphics below show the stacking and first few paper piecing steps and finished units for C2-1 and C2-2 to C2-9. When stacking, note that each Template C-6 should be labeled with a Fabric Reference. If you have not done this, do it now. Some of the units include TRP lines so watch for them. Trim the papers, but do not remove the papers until you are ready to assemble your units.



Fabric References are shown from the Front-Side. A Back-side layout is provided on Page 2.

NOTE - Corrections: Corrections are listed in the Cattail Wall Quilt Mixer pattern and on the General Correction link on our website by name and date. To find the corrections quickly, scan the QR code below. If the Print date below is after the print date listed on the website, your booklet has been updated.

Visit us on:



© Copyright: August 2017
Pattern: Satin and Lace Border

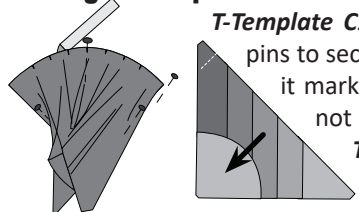
All rights reserved. No part of this pattern can be reproduced in any form for any commercial purpose without the expressed written permission of Quiltworx, Inc. The written instructions, foundation papers, graphics, and photographs for this pattern were designed as a package for the purpose of retail sales and as a result, fall under the protection of the federal copyright laws of the United States of America. Extra materials may be obtained from local quilt shops or directly from Quiltworx, Inc.

Wall or Queen 68" Mixer Border Pattern

ASSEMBLE THE UNITS

Snip-it Marks and Removing Foundation Paper: Before removing the foundation paper from Units C2-1 to C2-9, find the tiny marks on the curved edge. Use small scissors and clip the snip-it marks being careful not to snip past the seam allowance. As you clip, remove the foundation papers, but affix a temporary label for each unit C2-1 to C2-9 to each piece. Leave the papers on Unit C1-1 to C1-8 at this time.

Adding T-Template C1: Curved piecing is required to add T-Template C1 from Bag #C3. Use glue and pins to secure the curved edges. The Snip-it marks help relax this edge so it does not pucker and lays nicely along T-Template C1. Gather up the Unit C2 pieces to fit the curve, then take to the machine. Set your machine to sew a curved seam, then press the seam towards T-Template C1. Place the pieces on a design wall, in sewing order.



Sewing the Units: The border units are arranged and sewn in numerical order. Take Unit C2-2 and C1-1 to your machine. Remove the paper from Unit C1-1, match the interlocking seam, then sew a 1/4" seam and press the seam in the direction of the arrows. The seams are pressed towards the C2-2 Unit. Repeat this process for the remaining pairs shown below (C1-2 to C2-3, C1-3 to C2-4, C1-4 to C2-5, etc). Next, beginning with the C1-8 and C2-9 pair and the C1-7 and C2-8 pair, sew the two groups together. Press the seams in the direction of the arrow. Work your way back to Unit C2-1 to complete the pattern. Pressing direction is really optional for these border units. If you are dealing with shadowing, press the seams in the opposite direction.

Quiltworx.com
Julie Niemeyer Quilting

E-mail: info@quiltworx.com • Web: www.quiltworx.com



JNQ00242C002



Satin and Lace Border

Print Date: 09-04-18