

Step 12: Use the *Add-A-Quarter* ruler to trim the excess fabric.

Step 13

Then place the 3rd fabric next to the foundation paper.

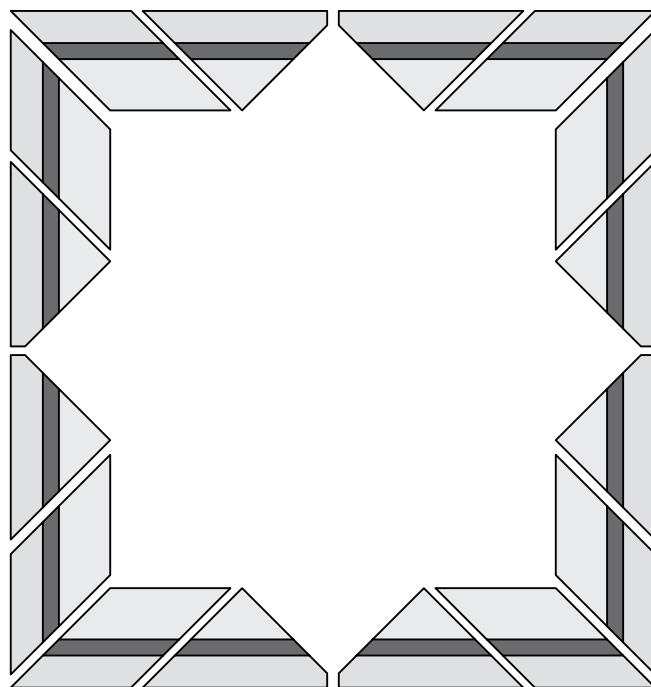
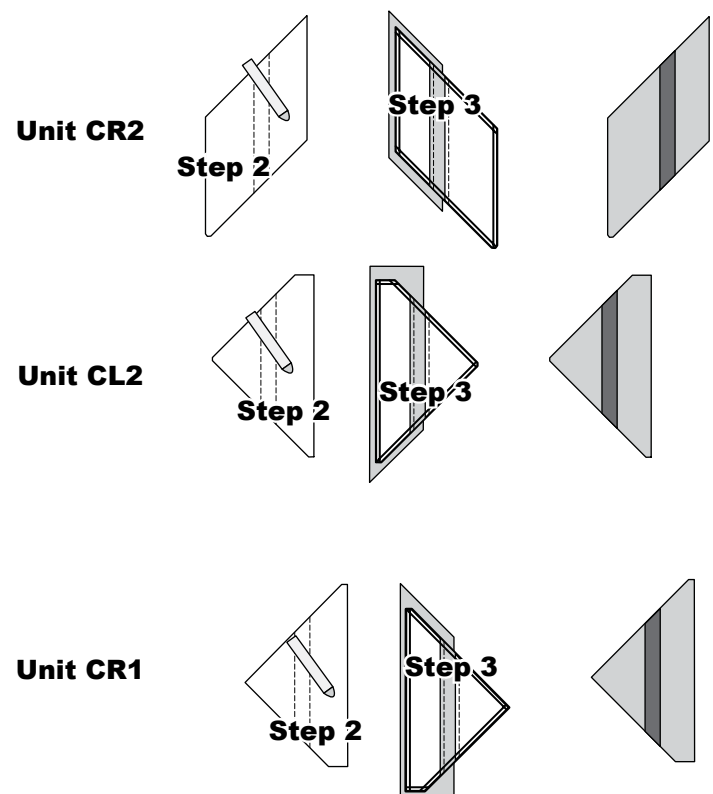
Step 14: Lift the foundation unit on top, lining up the sew-side with the trimmed seam allowance.

Step 15: Then, take to your machine, sew on Line 2, then open and press.

Trimming the Paper: The excess fabric and paper is trimmed off the edge of the foundations paper. There are two solid lines printed around the perimeter of each unit. The last line that borders the edge of the unit is the trim line. The paper is not removed at this time. Watch for

Smart Corners! Trim all of the small angles on every corner so when you assemble the pieces, they lie perfectly together for easy assembly.

Units CR1, CR2, CL2: Repeat the same steps that you used to complete Unit CL1 to paper piece the remaining border units. Some steps are shown in the following graphics to keep you organized. Do not remove the paper at this time. When the units are complete, place them back into the respective bags.

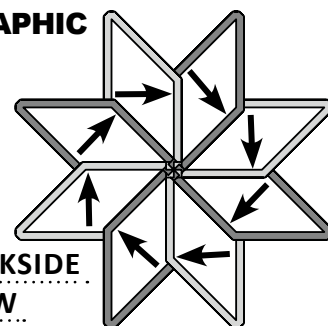


QUILT ASSEMBLY

If you have not removed all of your foundation papers from your units, please do so at this time. Assembly graphics are included on TP 373. Use Illustration 1 to place all of your pieces on a design wall before you start. Then, follow the dashed lines and pressing arrows in each Illustration 1 to 8 to complete each assembly step. Press in the direction of the arrows shown on your Assembly graphics. The graphics show the front side of the quilt.

Join the 4 quadrants of the quilt. Press the seams in the direction shown by the arrows in Illustration 8. Find the hidden stitches on the back at the center of the quilt and pick them back. Then, press the center of the quilt perfectly flat, causing a small octagon to form (an octagon forms instead of a star because you have smart corners) at the intersection.

STAR TWEAKING GRAPHIC



When done properly, the quilt will not bunch up in the center. Reference the Star Tweaking Graphic for a visual graphic of what the intersection will look like when complete.

BORDER ASSEMBLY INSTRUCTIONS

Do not assemble any of the border pieces at this time. This assembly is completed as part of the general assembly instructions.