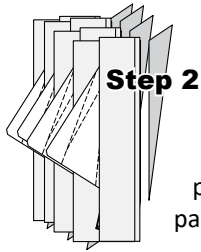


CHAIN PIECING EXAMPLE

The paper piecing instructions in each set of group instructions only show single layers of each paper piecing step. By stacking all of the same units and completing the same paper piecing steps on each foundation paper before moving to the next step, you can increase production, stay organized and minimize mistakes. This technique is called Chain Piecing or Speed Piecing. We highly recommend using this process after making your first unit.

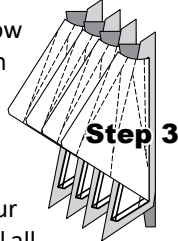
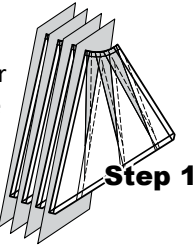
Step 1: The first piece of fabric is placed under Sec. 1 on each of the foundation papers before moving onto the next step.

Step 2: The next part of the chain piecing involves Steps a-d:



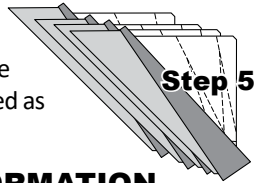
- a. Line the Fold Template up with the Sew Line.
- b. Fold the paper back over the fold template.
- c. Position the **Add-A-Quarter** ruler.
- d. Trim a quarter-inch seam allowance.

Step 3: Fabric #2 is now placed in position under each paper.



Step 4: The fabrics are sewn onto the units, playing follow the leader, starting with the first piece of paper on the top of your stack, then the second and third, and so on, until all the pieces have been sewn.

Step 5: The fabric is pressed on the backside of the paper. The steps are repeated as you add each round of fabric.



GROUP A: GENERAL INFORMATION FOUNDATION PAPERS AND TEMPLATES

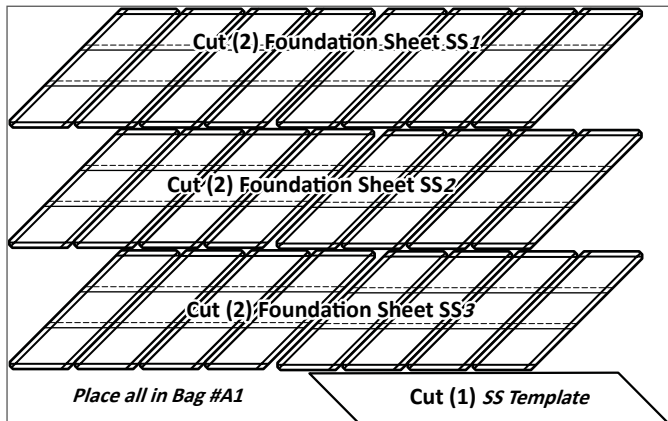
Ziploc Storage Bags: You will need (1) Bag to complete the organization for these instructions. Label the Bag as follows to stay organized while cutting the Foundation Units and Templates.

- Bag #A1: (2) Foundation Sheets SS1, SS2, and SS3, and SS Template.

► Preparing the Foundation Papers:

Step 1: Cut out (2) of each SS Foundation Sheet and (1) SS Template [NP 550]. See the newsprint graphic below for information on how to organize your units and templates into bags.

► (1) NP 550



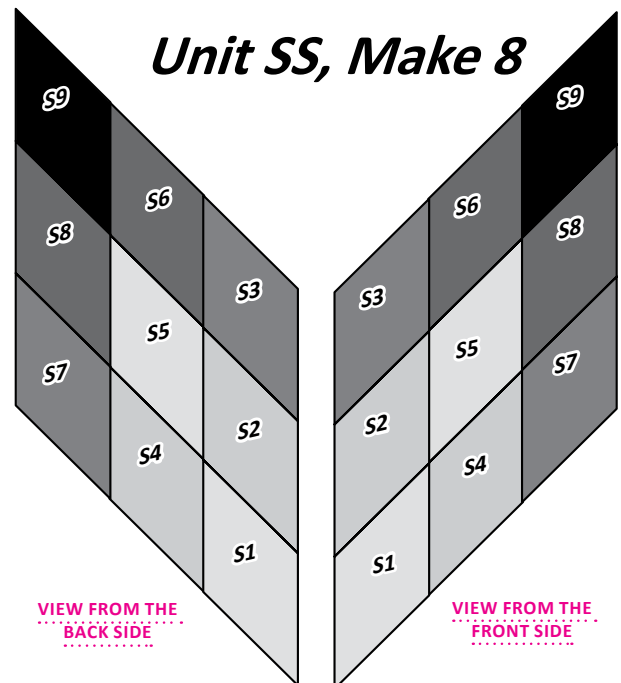
NOTE - Additional Instructions: *Refer back to General Information for Foundation papers and templates for additional instructions on how to prepare your foundation papers and templates.

NOTE - Interior Foundation Paper Cut Lines on the Foundation Sheets: Each foundation sheet includes (4) rows of diamonds. The rows are not cut apart until after the paper piecing is completed.

► Tiny Lone Star Fabric Information:

The table on Page 4 includes yardage, fabric references, and which fabrics should go with which cutting templates to complete Group A.

FABRIC #	INCH	YDS	ASSIGNED COLOR
GROUP A: Unit SS			
FABRIC S1 SS TEMPLATE	2-1/2"	1/8	FABRIC SWATCH
FABRIC S2 SS TEMPLATE	2-1/2"	1/8	FABRIC SWATCH
FABRIC S3 SS TEMPLATE	2-1/2"	1/8	FABRIC SWATCH
FABRIC S4 SS TEMPLATE	2-1/2"	1/8	FABRIC SWATCH
FABRIC S5 SS TEMPLATE	2-1/2"	1/8	FABRIC SWATCH
FABRIC S6 SS TEMPLATE	2-1/2"	1/8	FABRIC SWATCH
FABRIC S7 SS TEMPLATE	2-1/2"	1/8	FABRIC SWATCH
FABRIC S8 SS TEMPLATE	2-1/2"	1/8	FABRIC SWATCH
FABRIC S9 SS TEMPLATE	2-1/2"	1/8	FABRIC SWATCH



TWINKLE STAR FABRIC REFERENCES

If you have used Quiltster to create your own color layout, fabric references are included in the program that tell you which fabric numbers apply to which pieces in the quilt. This makes a seamless tie back to the pattern. Use this drawing and the Unit Chart earlier in the pattern, along with Quiltster to plan your color for this project. To see what it will look like before you make your final fabric selection, use Quiltster!

