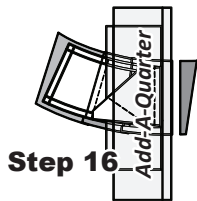
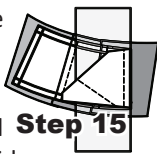


Step 15: With the paper facing up, place the fold template over Sec. 3, line the edge up with Line 3 on the foundation paper, and fold back the paper.



Step 16: Place the *Add-A-Quarter* ruler next to the folded back section on the paper, lip-side-down, and complete the trimming for each unit.

Step 16

Step 17: After the trimming is completed with the *Add-A-Quarter* ruler, stack

Step 18

the units, leaving the papers in the folded back position. This allows you to pick up each unit, and position it onto the next fabric strip.

Color 8 is Facing Right-Side Up

Step 18: Place Strip #4, (*Color 8*), *right-side-up* at your machine next to the feed dogs. Position the first arc onto the strip with the paper folded back and repeat for each foundation unit.

Step 19: When the sewing is completed, carry the papers and strips back to your cutting board. Position the fabric on the board, *paper-side-up* and cut between the foundation papers with your rotary cutter to separate each unit. Stack the pieces *paper-side-up*.

Step 20: Reposition the foundation units with the *paper-side-up*. Place the Fold Template on Line 4.

Step 21: Fold back the paper. Place the *Add-A-Quarter* ruler next to the folded back paper, and trim a quarter-inch seam.

► **Wings, Template A-1, Fabric S10:**

Step 22: Place the fabric piece for Sec. 5, *right-side-up* next to the folded back paper as shown.



Step 23: Lift the foundation paper and slide the fabric under Sec. 2. Line the sew-side up with the trimmed quarter-inch seam allowance. Make sure the fabric extends beyond the boundaries of the wing section.

Step 24: Open the paper and sew on Line 4. The stitches should start and stop at the edge of the paper.

Step 25: When you are done sewing, flip the papers over and press the fabric pieces open on the backside of the paper.



Step 26: Sew each TRP Line with a basting stitch length 2.8.

Step 27: The excess fabric is trimmed off from around the outer edges on Unit AR to complete the Units. If you own the Creative Grids rulers, Template L is used to trim the Unit AR Pieces.



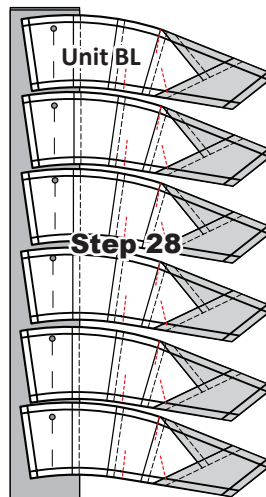
NOTE - Foundation Paper: Do not remove the foundation paper at this time. The paper will be removed just prior to completing the curved piecing on the Melon pieces, Template E. [Page 9]

► **Unit BL:**

The BL Units were designed with one additional piece, (Sec. 6) which is the last piece sewn onto the foundation papers. The pieces for Sec. 6 were cut using the *Unit BL Template B-2 Layout Sheet*. You should have (6) pieces cut from Fabric S12.

Step 28: The strip piecing begins again starting with Unit BL. The dashed line located next to Line 1 is lined up with the edge of both fabric strips. The sewing begins with the first foundation paper and ends with the sixth piece of paper on each strip set.

To complete the strip piecing for Unit BL, follow the previous Steps 1-27 for Unit AR. The only difference in following the steps are the unit name, the position of the paper unit, and Temp A-2 is used for Sec 5 instead of Temp A1. When you get to Line 5 proceed with the instructions below.



► **Star, Template B-2, Fabric S12:**

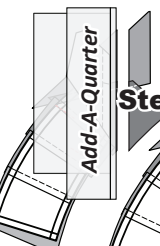


Step 29: Reposition the foundation units with the *paper-side-up*. Position the fold template over the top of Sections 4 and 5, lining the edge up with Line 5. Fold the paper back and tear the paper along the stitches on Line 5. Stop tearing when you hit the fold template.



NOTE - Tear Back the Paper: Tearing the paper along the stitches allows the fabric to relax making it possible to place the *Add-A-Quarter* ruler along the folded edge.

Step 30: Trim the fabric with the *Add-A-Quarter* ruler, position the last piece of fabric *right-side up* next to the paper. Lift the paper and slide the fabric under Sec. 3 in position.

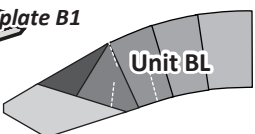
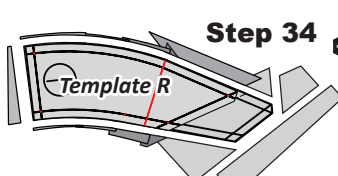


Step 31: Open the paper and sew on Line 4. The stitches should start and stop at the edge of the paper.

Step 32: When the sewing is done, flip the papers over and press the fabric on the backside of the paper.

Step 33: Sew each TRP Line with a basting stitch length 2.8.

Step 34: The excess fabric is trimmed off from around the outer edges on Unit BL. If you own the Creative Grids rulers, Template R is used to trim along the curved edges. The template is then removed and Template B1 is used to complete the trimming around the star point. A Straight edge ruler will also work to trim along the star.

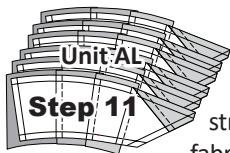


Step 8: After the trimming is completed with the *Add-A-Quarter* ruler, stack the units, leaving the papers in the folded back position.



Step 9: Place Strip #3, (Color 2), right-side-up at your machine next to the feed dogs. Position the first arc onto the strip with the paper folded back as shown.

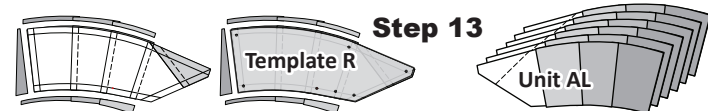
Step 10: Open the foundation paper on each piece, and sew on Line 2. Stop before you get to the end of the first paper and position a second unit onto the fabric strip.



Step 11: When the sewing is completed, carry the papers and strips back to your cutting board. Position the fabric on the board, *paper-side-up* and cut between the foundation papers with your rotary cutter to separate each unit. Stack the pieces *paper-side-up*.

Step 12: Line the fold template up with Line 2 on the paper. Fold back the paper and trim the fabric with your rotary cutter.

Step 13: At this time the excess fabric is trimmed along the edges.



Center Background Template: The (6) pieces cut with *DWR Background T-Template D* are now sewn onto the foundation papers.

Step 14: Locate the 1/4 inch intersecting points on both pieces. *CGRDIA* Templates were designed with drilled holes at each intersection.

Step 15: Position the pieces cut from *T-Template D* onto the top of Unit-AL, with *right-sides-together*. With the Smart Corners built into the template pieces you will find it each to match and pin both ends. Glue the edges along the curve. The glue should only be added along the edge of the fabric, keeping the glue so it falls within the seam allowance area.

Step 16: Position both pieces at your machine. Place Unit AL, *paper-side-down*, next to the feed dogs and sew the two (2) pieces together using a quarter-inch seam allowance.

NOTE - Purple Thang: The Purple Thang works great as a third finger when sewing the curves. It can be used to smooth out any pleats you might run into and is very helpful in holding the fabric edges together as you complete your sewing.

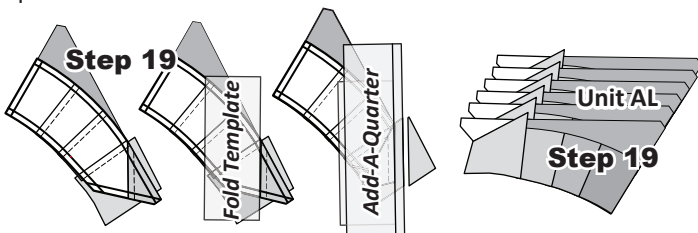
Step 17: Press towards *T-Temp. D*.



► The Strip Piecing Continues with Strip #4

Step 18: The papers are positioned onto Strip #4, (Color 1) as shown in the graphic to the left. When the strip piecing is done, press the fabric open on the backside of the paper and cut the units apart.

Step 19: Reposition the foundation units with the *paper-side-up*. Place the Fold Template on Line 3. Fold back the paper. Place the *Add-A-Quarter* ruler next to the folded back paper, and trim a quarter-inch seam.



► Wings, Template A-2, Fabric S9

Step 20: Place the fabric piece for Sec. 5, *right-side-up* next to the folded back paper as shown.

Step 21: Lift the foundation paper and slide the fabric under Sec. 2. Line the sew-side up with the trimmed quarter-inch seam allowance. Make sure the fabric extends beyond the boundaries of the wing section.

Step 22: Open the paper and sew on Line 4. The stitches should start and stop at the edge of the paper.

Step 23: Press the fabric pieces open on the backside of the paper. Then sew each *TRP Line* with a basting stitch length 2.8.

Step 24: Flip the papers over so the paper side is up and use a straight edge ruler lined up to the edge on *T-Template D* to trim the excess fabric off from around the edges on the wing and Sec. 4.

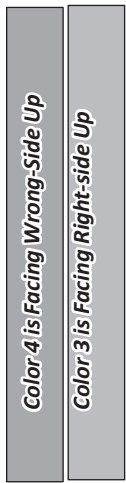
NOTE - Trimming Hints: Do not trim off the Center Background Pieces and don't forget to trim the Smart Corners!

NOTE - Foundation Paper: Do not remove the foundation paper at this time. The paper will be removed just prior to completing the curved piecing on the Melon pieces cut from *DWR T-Template E*.

► Unit BR:

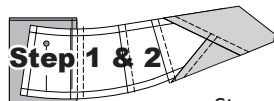
The BR Units were designed with one additional piece, (Sec. 6) which is the last piece sewn onto the foundation papers. The pieces for Sec. 6 were cut using the *Unit BR Template B-1 Layout Sheet*. You should have (6) pieces cut from Fabric S11.

Step 1: The strip piecing begins again with Unit BR. Stack the strips starting with Fabric #1 [Color 4] and Fabric #2 [Color 3] facing right-sides together.

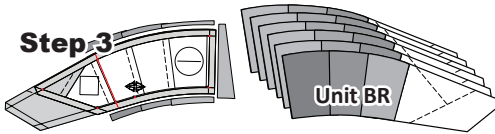


Step 2: The dashed line located next to Line 1 is lined up with the edge of both fabric strips. The sewing begins with the first foundation paper and ends with the sixth piece of paper on each strip set.

Step 3: The strip piecing for Unit BR, follow the previous Steps 1-14 for Unit AL. You will need to complete the trimming in Step 14 (with the Creative Grids Rulers, use Template L) to prepare your papers for the *DWR Background T-Template C*.

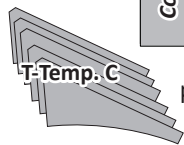


Step 3: The strip piecing for Unit BR, follow the previous Steps 1-14 for Unit AL. You will need to complete the trimming in Step 14 (with the Creative Grids Rulers, use Template L) to prepare your papers for the *DWR Background T-Template C*.

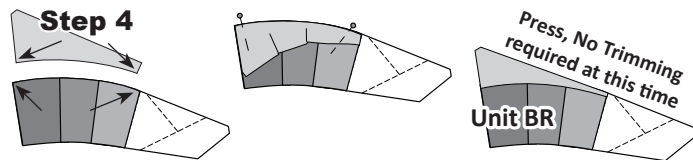


Center Background Template: The (6) pieces cut with *DWR Background T-Template C* are now sewn onto the foundation papers.

Step 4: Locate the 1/4 inch intersecting points on both pieces. Position the pieces cut from *T-Template C* onto the top of Unit-BR, with *right-sides-together*. Match the Smart Corners at both ends then glue the edges along the curve.



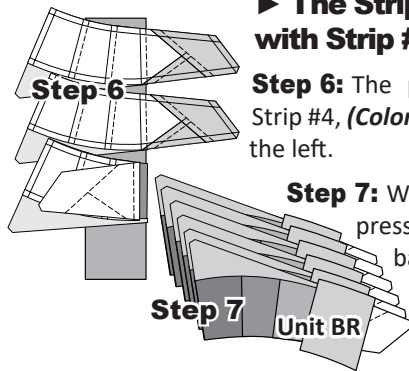
Step 5: Position both pieces at your machine. Place Unit BR, *paper-side-down*, next to the feed dogs when sewing the (2) pieces together. After the curved piecing is completed, the fabric is pressed toward *T-Temp D*.



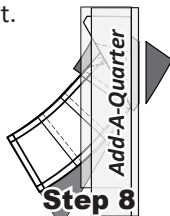
► The Strip Piecing Continues with Strip #4

Step 6: The papers are positioned onto Strip #4, (*Color 1*) as shown in the graphic to the left.

Step 7: When the strip piecing is done, press the fabric open on the backside of the paper and cut the units apart.

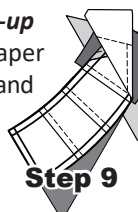


Step 8: Reposition the foundation units with the *paper-side-up*. Place the Fold Template on Line 4, fold back the paper and trim a quarter-inch seam.



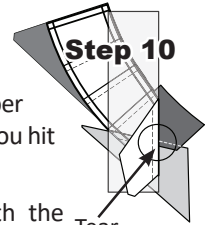
► Wings, Template A-1, Fabric S9

Step 9: Place the fabric piece for Sec. 5, *right-side-up* next to the folded back paper. Lift the foundation paper and slide the fabric under Sec. 2. Open the paper and sew on Line 3. The stitches should start and stop at the edge of the paper. Press the fabric pieces open on the backside of the paper.

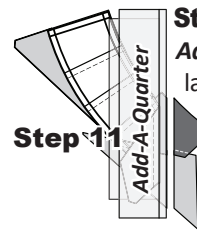


► Star, Template B-1, Fabric S11

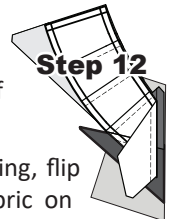
Step 10: Reposition the foundation units with the *paper-side-up*. Line the ruler up with Line 5. Fold the paper back and tear the paper along the stitches on Line 5. Stop tearing when you hit the fold template.



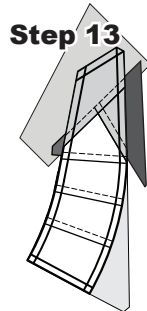
Step 11: Trim the fabric with the *Add-A-Quarter* ruler, position the last piece of fabric *right-side up* next to the paper. Lift the paper and slide the fabric under Sec. 3 in position.



Step 12: Open the paper and sew on Line 4. The stitches should start and stop at the edge of the paper.

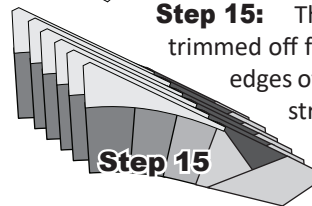


Step 13: When you are done sewing, flip the papers over and press the fabric on the backside of the paper. Then sew each *TRP Line* with a basting stitch length 2.8.



Step 14: Sew each *TRP Line* with a basting stitch length 2.8.

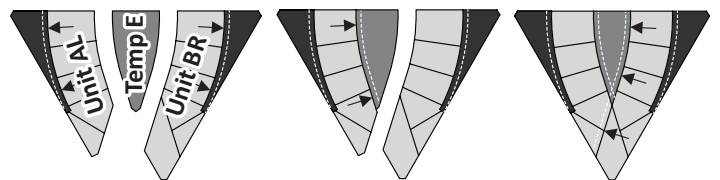
Step 15: The excess fabric is trimmed off from around the outer edges of Sec 5 & Sec. 6 using a straight edge ruler. Line it up with the straight edge of *T-Template C*.



► Assemble Unit AL, T-Template E & Unit BR

Step 1: Remove the foundation paper from the backside of each Unit AL & BR.

Step 2: Remove the Center Background Template pieces cut with *DWR Background T-Template E* from Bag AL/BR. You should have (6) pieces.



Step 3: Arrange the units as shown above. Position Unit AL onto the top of the pieces cut from *T-Template E*, with *right-sides-together*. Match and pin the pieces at both ends. Glue the raw edges along the outside curved edge and sew the pieces together with a quarter-inch seam allowance.

Step 4: Press seams towards *T-Template E*.

Step 5: Position Unit BR, onto the top of Unit AL/T-Temp E with *right-sides-together*. Match and pin the pieces at both ends. Glue the raw edges along the outside curved edge and sew the pieces together with a quarter-inch seam allowance.

Step 6: Press seams towards *T-Template E*.

Step 7: After the curved piecing is completed, the fabric is pressed as shown. Place these units back into their respective bag for now.