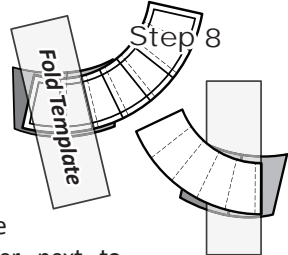


**NOTE** - Before you can sew the pieces onto the next strip, you must fold back the papers on Line 2 and trim the next quarter-inch seam allowance.

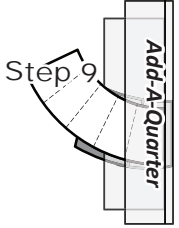
► **Trimming Process**

The papers are folded back on Line 2 and the fabric is now trimmed before adding the second strip.

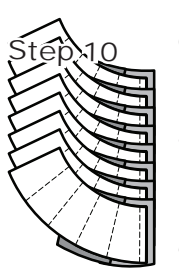
Step 8: With the paper facing up, place the fold template over Sec. 2. Line the edge of the fold template up with Line 2 on the paper and fold the paper back over the top of the fold template.



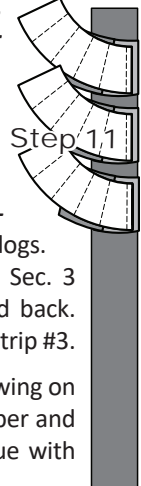
Step 9: Place the **Add-A-Quarter** ruler next to the folded back section on the paper, lip-side-down, and trim the fabric with your rotary cutter. This leaves you with a quarter-inch seam allowance. Repeat the trimming on all (8) pieces.



Step 10: After the trimming is completed with the **Add-A-Quarter** ruler, stack the units, leaving the papers in the folded back position. This allows you to pick up each unit and position it onto the next fabric strip.



Step 11: Place strip #3, **right-side-up** at your machine next to the feed dogs. Position the first arc onto the strip. Sec. 3 must have fabric under it when the paper is folded back. Match the 1/4" seam allowance up with the edge of strip #3.

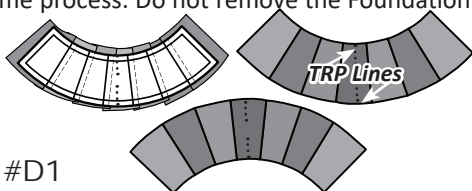


Step 12: Open the foundation paper and begin sewing on Line 2. Stop before you get to the end of the first paper and position a second unit onto the fabric strip. Continue with the 3<sup>rd</sup> and 4<sup>th</sup> pieces finishing with the 8<sup>th</sup> unit.

Repeat the Previous Steps: Continue adding each strip by repeating the same process for each section on the foundation paper. When the strip piecing is completed, sew the registration lines to each unit by sewing a basting stitch (minimum stitch length of 2.8) along each TRP line marked on the foundation papers. Don't skip this step. These lines are required to complete the curved piecing that is require when sewing the border units to the background templates C1-C6.

When the TRP lines have been sewn, the excess fabric and foundation paper is trimmed away. Clipping the inside curve at least (1) time inside each arc will be required to complete your curved piecing. Be carefully when clipping not to clip more than 1/8" into the seam allowance. If you did not work with all (12) pieces at once, then complete the 2nd group of strip piecing at this time using the same process. Do not remove the Foundation Paper at this time.

► **Foundation Strip Piecing: Bag #D1**



The **Unit D1** arcs are strip pieced using the same process. You should have (8) 2" by 42" strips cut from (8) different fabrics in Bag #D1.

You only need (8) Units for the D1 Arcs. If you sew all eight onto your first 21" strip set the second set will be extra fabric.

If you followed the stacking instructions for the strip sets, they are already stack in the order they will be picked up matching the swatches glued to your first foundation paper.

Step 1: At this time, cut the strips in half to yield (2) sets of (8) strips. To prepare for sewing, position strip #1, and strip #2 on your table facing **right-sides-together**. Strip #1 is on the top, with #2 on the bottom.

Step 2: Position the first piece of foundation paper, **Unit D1, right-side-up**, onto the top of Strip #1. Center Sec. 1, over the fabric. Line up the first dashed line printed next to Line 1 with the edge of both fabric strips.

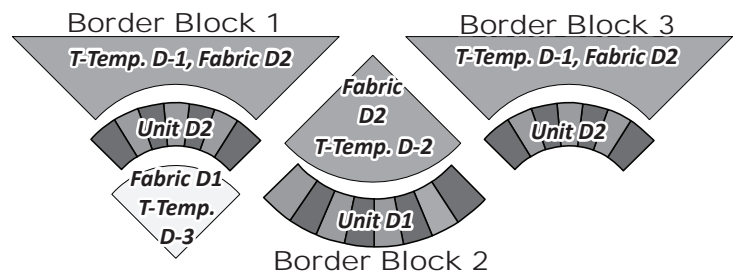
Step 3: Carry the strips and paper to your machine and start sewing on Line 1, stopping just before you get to the bottom of the first piece. Continue adding the remaining units by repeating the previous instructions.

Step 4: When the strip piecing is completed, the registration lines are sewn on each unit and the pieces are placed back into Bag #D1 until the border assembly steps. Complete all (12) units if you have not done so already.

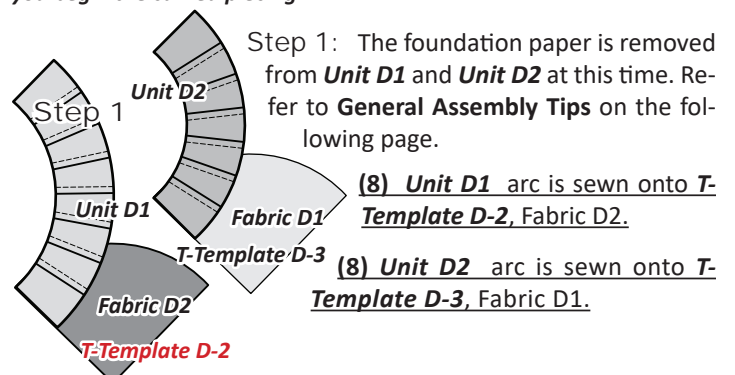
**NOTE** - Do not remove the paper at this time.

► **Curved Piecing: Unit D2 and D1 to T-Templates D-1, D-2, and D-3**

You will need to complete (3) different block groups to complete your border. (8) Each Block 1, (8) Each Block 2, (4) Each Block 3.



**NOTE** - Set your machine to sew a quarter-inch seam allowance before you begin the curved piecing.



Step 1: The foundation paper is removed from **Unit D1** and **Unit D2** at this time. Refer to **General Assembly Tips** on the following page.

**(8) Unit D1** arc is sewn onto **T-Template D-2, Fabric D2.**

**(8) Unit D2** arc is sewn onto **T-Template D-3, Fabric D1.**