

Size: 87" by 100"

GENERAL INFORMATION

Flowers for My Wedding Ring has been a staple of our foundation paper piecing designs since the late 1990s. The pattern has been through various updates through the years to keep up with publication changes within our company and product changes available in the market. This publication updates will include the following changes.

Quiltworx Tonga Treats: In the summer of 2016, Judy Niemeyer hand selected a group of (48) batiks designed by Judy & Judel Niemeyer with Timeless Treasures to make the arcs for the sample shown on the cover page. Timeless Treasures precut and packaged the collection into single sets of (48) 2-1/2" strips. Thank you, Timeless Treasures, for making these available for our customers. A link is available on our website to learn more about the Quiltworx 2-1/2" Strip Sets.

Quiltworx Impressions: Quiltworx is now providing laser cut template sheets for our applique designs. Our pre-cut template pieces are cut from a product call Stitch-N-Peel. [Refer to the Product Notation on the bottom of Page 17].

With this pattern you will receive (1) package of precut Applique Sheets filled with Flowers, Stems, and Leaves. [*Refer to the Inventory List on LP 023]. Two packages are required to complete the Applique Layout on the cover. Additional packages are available to be purchased from Quiltworx.com for those of you who want to duplicate the layout on the cover. Additional layout options are included in Chapter Four that only use one package.

Corrections: If corrections are needed for Flowers for my Wedding Ring, they will be posted at <http://www.quiltworx.com> on the pattern page. Corrections are listed by date. Look on the back of the pattern for a print date. If the correction is in the instructions and the date is after June 2017 and after the print date on your pattern, you will need the correction. If your pattern has the more recent date, the correction has already been made. If the correction is for newsprint, please double check your newsprint regardless. If there are no corrections listed, then your pattern may not have any errors! If you run across something you think might be in error, please send us an e-mail so we can review it and either post a correction or provide a clarification for you. To quickly access the pattern page, scan the code to the right.



Foundation Papers: The following foundation papers are required to complete the 87" x 100" layout for the Flowers for my Wedding Ring:

- | | |
|-------------------|------------------|
| • NP 110: 7 pages | • LP 023: 1 Page |
| • NP 149: 4 pages | • LP 024: 1 Page |
| • TP 369: 1 page | • LP 025: 1 Page |

► Bags

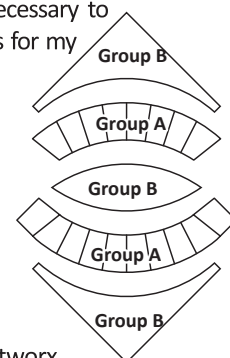
You will need (5) Bags for this project (Listed at top of next column):

- | | |
|--------------------------|--------------------|
| • Bag #1: Unit A | • Bag #4: Unit G |
| • Bag #2: Unit B | • Bag #5: Applique |
| • Bag #3: T-Temp D, E, M | |

► Pattern Groups

With the publication of Quiltster, Quiltworx has taken steps to re-organize many of its staple patterns based on Unit Groups. The following instructions will include cutting information, followed by piecing, and then leading to any sub-assembly information necessary to complete each Group across the pattern. Flowers for my Wedding ring includes the following Groups:

- **Group A:** Unit A and B Arcs (Chapter 1)
- **Group B:** T-Templates D and M, Background (Chapter 2)
- **Group C:** T-Template E and Unit G, Geese (Chapter 3)
- **Group D:** Applique (Chapter 4)

**► Extra Foundation Papers**

Extra Foundation papers are available from Quiltworx.com to make this pattern larger. All instructions to increase the size are included in Booklet #1 with this pattern. Yardage and cutting instructions are included in Charts throughout these instructions. Booklet 1 includes information on extra foundation package names and how many units are included in each package.

YARDAGE SELECTION FOR THE 87" X 100" LAYOUT

Selecting your own Fabric: If you choose to select your own yardage for the this quilt, it will require you to cut your own 2-1/2" strips. *Refer to [Making Your Own Strips and Ring Color Sets] on Page 2.

Ring Colors Sets: Ring Color Sets are generally used to complete our Wedding Ring quilts and can be purchased as pre-packaged sets consisting of (6) color groups of (8) 2-1/2" x 42" strips ranging from light to dark (48) strips per package. TWO Quiltworx 2-1/2" strip packages are needed to complete this quilt. One strip creates the rings and the other set creates the geese and some of the applique pieces.

Corner Pieces (Fabrics A1:a A1:b A1:c, A1:d, and C3): Choose (2) dark, and (2) medium fabric for the corners A1:a to A1:d, 1/4 Yard each. Choose (1) 1/8th yard cut for the Geese Border Corners, Fabric C3 or use leftover medium Arc Corner Fabrics.

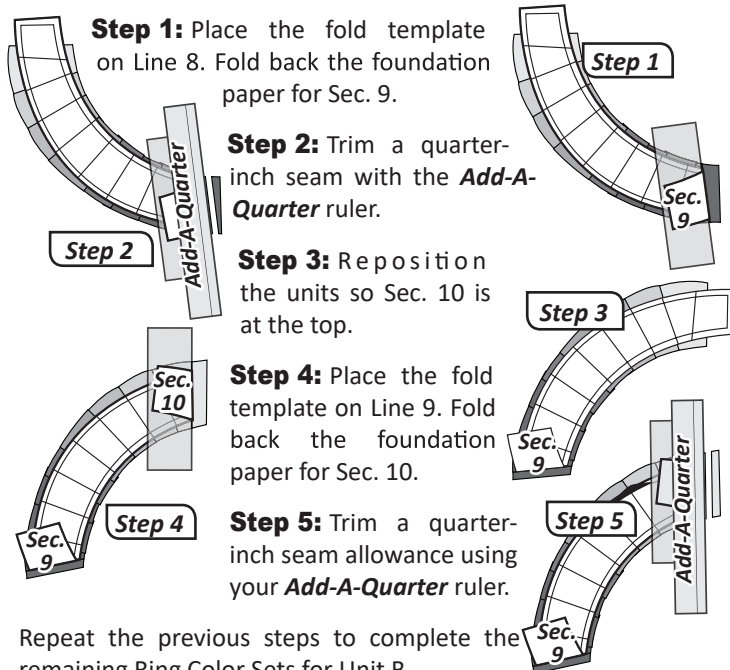
Center, Melon Backgrounds, Geese Backgrounds, and Border (Fabrics B1:a to B1:f, C1: a to C1:f, and Border Fabric): Choose (6) fabrics for the background fabrics, these should blend in color and value. Choose (1) additional fabric for the coordinating border.

Applique: We recommend (14) 1/4 Yard coordinating fabrics (at least (4) greens and the rest brights) to complete the applique.

Yardage for Other Sizes: Refer to the table on the back of this pattern for yardages to make quilts in the larger layouts.

When the strip piecing is completed for each *Ring Color Set*, proceed with the following steps to complete the trimming of the corner units.

► Trimming the Corners, Sections 9 & 10

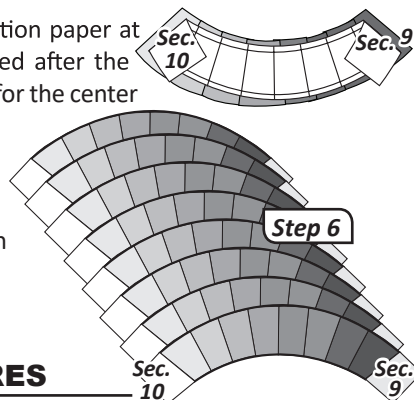


Repeat the previous steps to complete the remaining Ring Color Sets for Unit B.

Step 6: Trim the pieces on the solid black line along the outer edge of the foundation paper. If you have the Creative Grids Rulers, you can use these to trim the curved edges.

Do not remove the foundation paper at this time. It will be removed after the curved piecing is complete for the center units.

At this point, you should have (49) trimmed Wedding Ring Arcs for each Unit A and Unit B.



■ CUTTING THE CORNER SQUARES

NOTE - Geese Border Corner Option: Many kits have been set up to use corner fabrics for the geese border corners. You may want to cut (2) 3-1/4" squares from (2) corner square fabrics before cutting the (25) 3" squares. If Fabric C3 was not in your kit.

Step 1: From each of the Corner Fabrics A1:a to A1:d, cut (2) 3" x 42" strips. Before you cut, Reference (LINE 8) in the Table on Page 3 for the correct # of pieces to cut from each strip.

Step 2: Stack the strips *right-side-up* and then cut (25) 3" Squares from each of the (4) colors [Total of (100)].

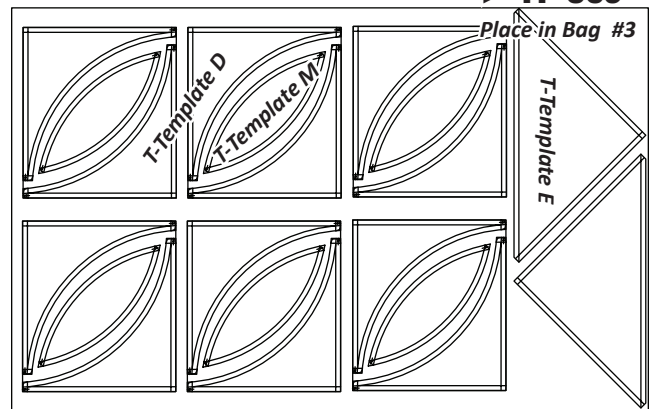
Step 3: The corner pieces are not sewn onto the foundation papers at this time. Place the squares into Bag #2 with the foundation papers for Unit B. The corners are not sewn onto the papers until after the curved piecing is completed in Chapter 2.



■ CHAPTER 2: GROUP B: CENTERS AND MELONS

Background T-Templates: The following newsprint should be included in your pattern to complete the cutting for the background Centers and Melons. The number of newsprints you need is on Page 1. The Wedding Ring Cutting Chart on Page 8 shows the number of template you need to cut for the size quilt you are making. The cover quilt is 87" x 100" and is highlighted in the table in grey.

► TP 369



■ GENERAL UNIT TECHNIQUES

Cutting Techniques: Efficiency has been incorporated into our cutting techniques. With these instructions, we use T-Template Layout Sheets. If these concepts are new to you, you will find them to be time saving and efficient.

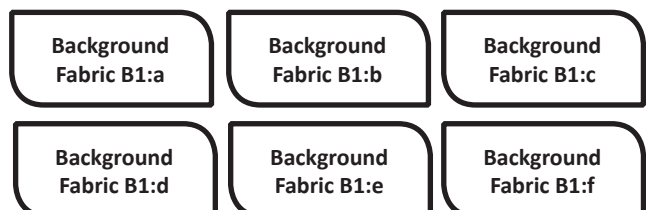
Curved Piecing: We approach curved piecing differently than the traditional way of clipping and pinning. Pins and glue are applied to the seam allowance to hold the fabrics in place along the raw edges, which helps ensure a perfect fit when sewing with a quarter-inch seam allowance.

Smart Corners: Quiltworx.com now designs many of its foundation units and T-Templates with "Smart Corners". This takes all the work out of placing the unit pieces during the assembly process by building the corner of the paper to perfectly match the finished seam allowance and eliminating all dog ears. You will find this to be very helpful as you assemble the units.

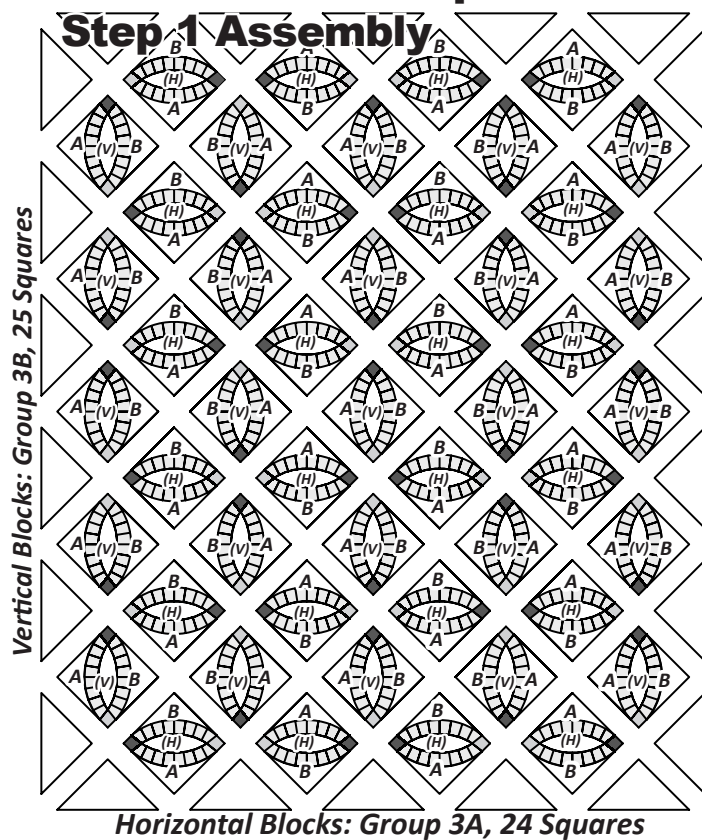
■ ORGANIZING YOUR FABRICS

Background Fabrics: The instructions in this pattern are written for (6) Background Fabrics regardless of the size quilt you want to make. These fabrics are referred to as B1:a to B1:f, where B1 is the reference for Background fabric and a to f designate the (6) fabrics chosen. You can use less or more than (6) fabrics and quickly recalculate the yardage provided by taking the total number of background strips shown in LINE 4 in the Cutting Chart and dividing that by the number of fabrics you want to use. To keep your background fabrics organized, swatch boxes are provided below.

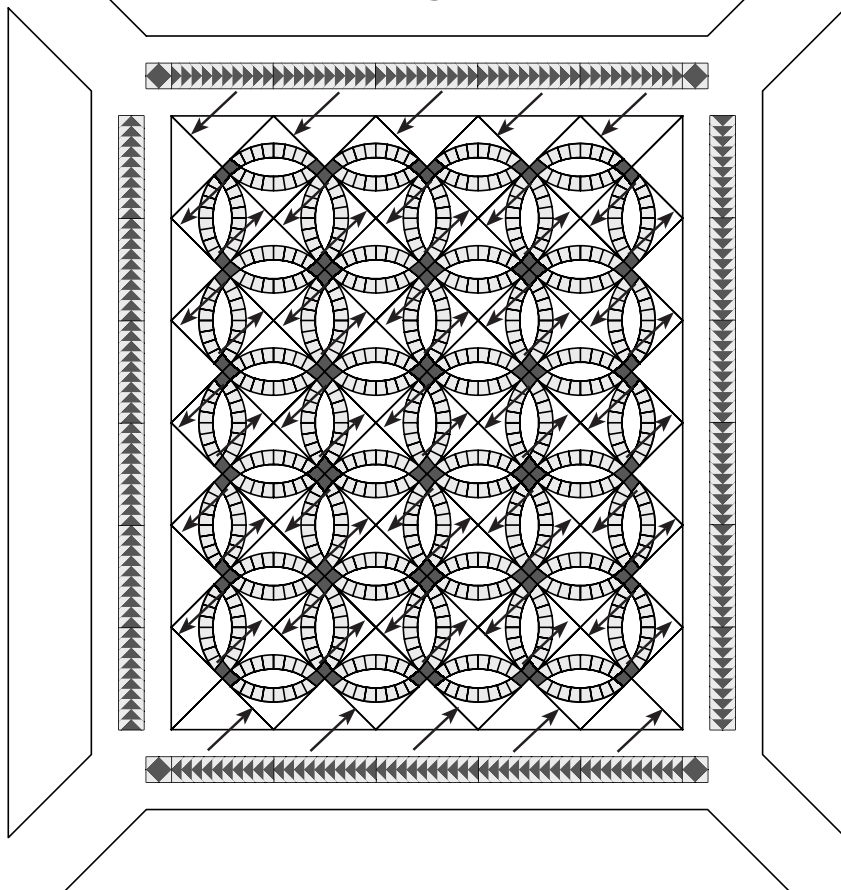
► 6 Center and Melon Backgrounds



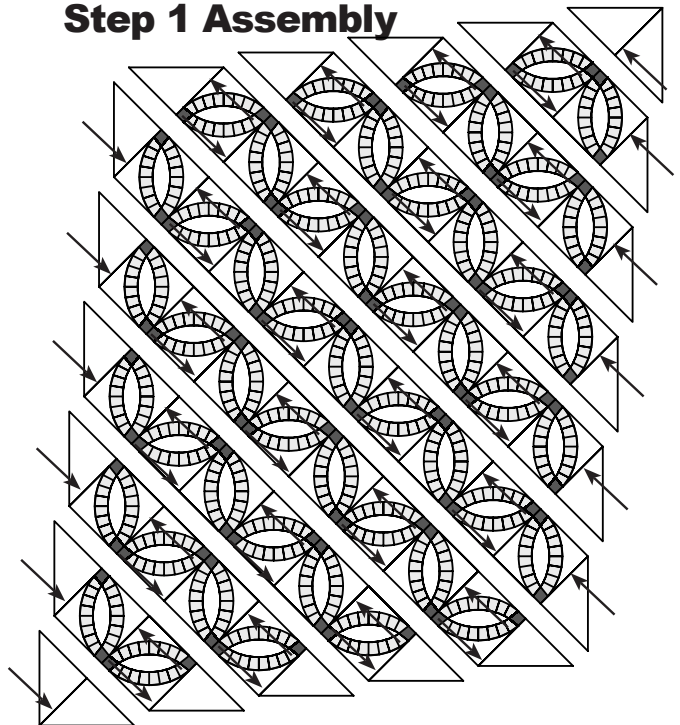
► Illustration 2: Exploded View



► Illustration 3: Center Block Layout



► Illustration 2: Diagonal Rows Step 1 Assembly



CHAPTER 3: GROUP C, BORDER GEESSE

Ziploc Storage Bags: You will need (3) Bags to complete the organization for these instructions. Label the Bags as follows to stay organized while cutting the Foundation Units and Templates.

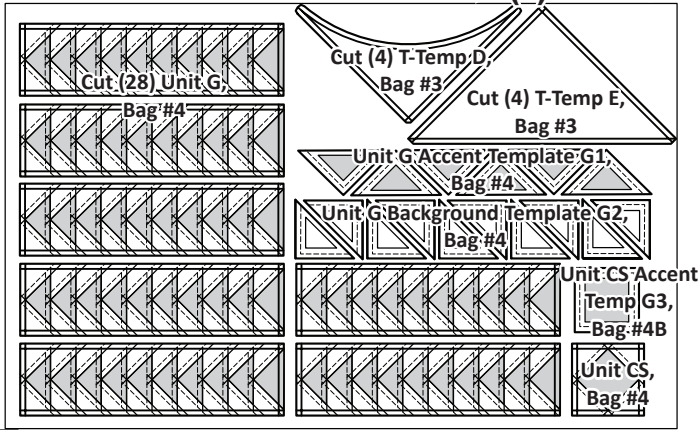
- Bag #4: Up to (28) Unit G
(Depending on size of quilt)
- Bag #4: (4) of each Unit CS and Temp G3
- Bag #3: If you need extra, there are
(4) T-Template D and T-Template E
included in this section as well.

Foundation Papers: A graphic of your newsprint, including unit names, template names and the associated Bag # for each unit and template is shown at top of Page 13.

Templates: Extra templates are provided for *T-Templates D & E* which you probably will not need with these instructions. Place the foundation papers and T-Templates into their associated bags as noted on the Foundation Sheet graphics.

Templates G1 and G2: We recommend the following: Instead of cutting out each template individually, cut out each group of templates as a strip. This paper strip can then be placed on the fabric strips used for cutting (similar to a Template Layout Sheet) for cutting. You will need all (4) sets of Templates. For larger sizes, you may need to reuse Templates or use more than 12 fabrics beneath each template. We did not group them as a Template Layout Sheet because sometimes people want to create colorwave effects with the geese or make less units. These changes may require a different use for the Templates.

► (4) NP 149



GENERAL YARDAGE INSTRUCTIONS FOR THE BORDER

Fabric Strips: Below is a list of the *Cut Strip Sizes* required to complete each of the foundation papers for Unit G. The yardage was calculated per strip.

- **Geese & Corner Background, Fabric C1:** (1) 3" x 42" strip cut from your *Background Fabric* yields enough triangles to complete the background pieces for (1) Unit G Foundation Paper.
- **Geese, Fabric C2:** (1) 2-1/2" x 42" strip from your *Accent Fabric* yields enough triangles for the geese to complete (1) Unit G Foundation Paper.
- **Corner Accent, Fabric C3:** (1) 3-1/4" x 42" strip of *Accent Fabric* yields enough squares to complete (4) Unit CS. *Note, if you purchased a kit, you will need to use leftover medium corner square fabrics. If you don't like those colors, choose 1/8 yard of something from your stash. Or, like Judy, use scraps to match the geese fabrics that the corners touch and do something different in each corner.*
- **Border, Fabric C4:** Yardage for the mitred border is calculated by adding 4" to the longest dimension of the finished length of the quilt. The borders are cut from one background fabric. Example; Finished Quilt length = 100" + 4" = 104" for a Mitred Finish on the border. You would need to purchase 3 yards of fabric to complete the mitred border.

NOTE - Heirloom/Show Quality Quilts: For a high quality border finish, it is not recommended to piece your border strips.

► Selecting Fabrics for your Geese Blocks

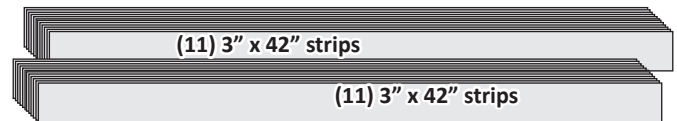
Background Fabric C1: One or more background fabrics were selected for the background pieces on Unit G. The choice and number of colors you use is up to you. The cover quilt used (6) different background fabric for the geese. The same fabric was used throughout each unit, but each unit was placed so background fabrics did not touch each other. This may take some pre-planning if you want your geese and backgrounds to have a specific layout. Quiltster is the perfect tool!

Accent [Geese] Fabric C2: The fabrics for the geese were selected from a package of Quiltworx 2-1/2" strips (with 48 pre-sorted strips per package). One 2-1/2" strip was selected for each foundation unit. The cover quilt uses (22) fabrics from the light and medium-light fabrics in the strip set. The lights were not used as they were the same color as the backgrounds. The darks were not used as the goal was to get a soft contrast, not a harsh contrast between the geese and the background. This way, the geese faded into the background under the applique. The strips that were selected for the geese were then sorted by value and numbered 1-22, #1 being the lightest value, #22 being the darkest value. *Note: The remaining strips in your strip set are placed in Bag #5 with the appliqué sheets.*

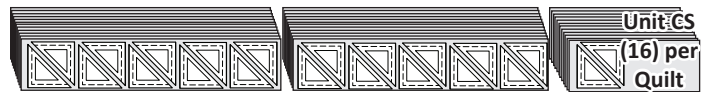
GENERAL CUTTING INSTRUCTIONS

► Unit G Background Cutting Information

Step 1: Cut a total of (22) 3" x 42" strips from your **C1 Background Fabrics**, (4) from 4 fabrics and (3) from 2 fabrics. Stack the strips, *right-side-up* into two groups of no more than (12) fabrics per group.



Step 2: Place (22) *Unit G Background Template G2* triangles onto the fabrics as shown. If you have cut a strip of the half-square triangles from each newspaper, simply lay (2) strips on each set of fabric strips so it appears as in the following graphic. You may need to reuse some of your templates for the (16) CS Corner triangle pieces, or any of the larger sizes.



Line #	FLOWERS FOR MY WEDDING RING, GEESE AND BORDER CUTTING CHART FOR (4) BED QUILT SIZES				
Line 1	Number of Rings	4 by 5	5 by 5	5 by 6	6 by 6
Line 2	Quilt Size	87" x 100"	100" x 100"	100" x 112"	112" x 112"
Line 3	(6) BACKGROUND FABRICS (FABRICS C1:a to C1:f)				
Line 4	Cut the Following Yardage from (6) Background Fabrics	3/4 Yd	3/4 Yd	1 Yd	1 Yd
Line 6	Unit G: Complete the Following Unit G	22	24	26	28
Line 7	Unit G and Unit CS: # of 3" Background Strips	22	24	26	28
Line 8	Unit G and CS Background Yardage for (1) Fabric	1-7/8	2-1/8	2-1/4	2-3/8
Line 9	Unit G & CS Background Yardage per Fabric for (6) Fabrics	3/8	3/8	1/2	1/2
Line 10	Unit G Geese : Number of 2-1/2" Strips	22	24	26	28
Line 11	Unit CS Accent Fabric: (1) 3-1/4" Strip	1/8	1/8	1/8	1/8
Line 12	Border Fabric for a 10" Wide Border (Cut width = 10-1/4")	3 Yd	3 Yds	3-1/4 Yds	3-1/4 Yds

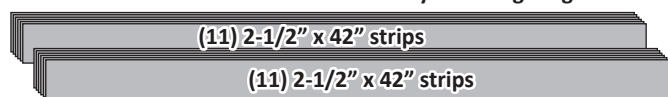
Step 3: Trim around each *Template G2*, to complete your cutting. Clip the stacks together and place into Bag #4.



► Unit G Accent Cutting Information

Step 4: If you did not select your strips from the precut 2-1/2" packages you will need to cut (22) 2-1/2" x 42" strips from your chosen fabrics. Divide the strips into stacks facing *right-side-up* into groups of no more than (12) fabrics per group.

EXAMPLE for a 4 x 5 Flowers for my Wedding Ring

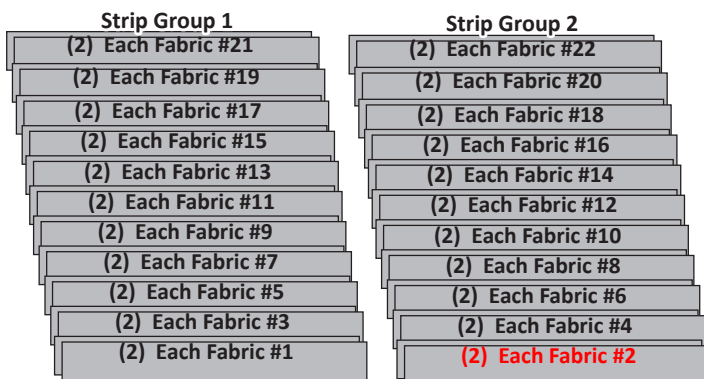


Step 5: The strips are now cut into (2) 2-1/2" by 21" strips.



► Stacking Order for the Cover Quilt:

Step 6: Five (5) geese from (2) different fabrics are sewn onto each foundation unit. To accomplish this, the fabrics are sorted and stacked into the two groups as shown. The fabrics in Group 1 are for the first (5) geese on each foundation unit and the fabrics in Group 2 are for the last (5) geese.



Step 7: Stack the strips in each group, in reverse order, starting with the largest # on the bottom. Then position (5) geese on the top of each stack and cut between each triangle.



Step 8: Label each stack with their respective Sec. #. Clip the stacks together and place back into Bag #4. Place the leftover fabric in Bag #5 to use with the applique.



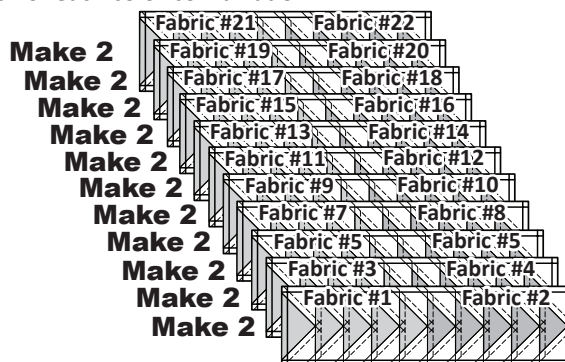
► Unit CS Accent Fabric C3

Step 1: Four (4) 3-1/4" squares are cut from the Unit CS Accent Fabric C3. These squares should be cut from one of the fabrics used in your geese. If you used the strip sets for the geese you may need to choose an alternative fabric from your own fabric stash to cut these four pieces. There is a good chance the 2-1/2" strips won't be big enough to cover Sec. 1 on Unit CS. Clip the pieces together and place in Bag #4 with the CS Units.

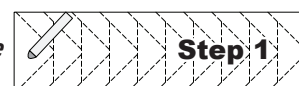


PAPER PIECING UNIT G, BAG 4

You will need to number your papers 1-22 on the last section of the Foundation Unit. A fabric swatch of each accent color glued to each foundation paper is very helpful in getting you started. Make two each of each color combination.



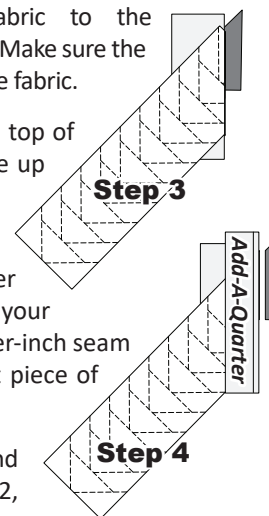
Step 1: Place Unit G *printed-side-up* on your table. Find Sec. 1 on the foundation paper and place a small amount of fabric glue on the *wrong-side* of the paper under Sec. 1.



NOTE - Too Much Glue! When adding the glue to the paper, take one very light swipe with the glue stick. The glue is used to adhere the first piece of fabric temporarily to the foundation paper while sewing the first line.

Step 2: Position the fabric pieces for Sec. 1 *wrong-side-up* on your table. Glue the fabric to the backside of the foundation paper as shown. Make sure the underneath side of Sec. 1 is covered with the fabric.

Step 3: Place the fold template over the top of Sec. 1. Line the edge of the fold template up with Line 1, then fold the paper over.

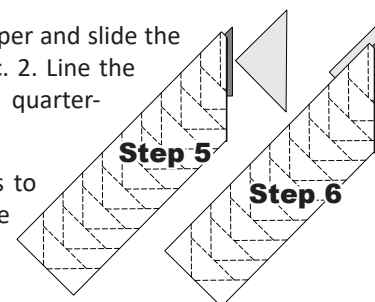


Step 4: Place the *Add-A-Quarter* ruler next to the folded back section of the paper lip-side down and trim the fabric with your rotary cutter. This leaves you with a quarter-inch seam allowance with which to line up the next piece of fabric.

Step 5: Remove the *Add-A-Quarter* and fold template. Position the Fabric for Sec. 2, *right-side-up* next to the folded back paper.

Step 6: Lift the foundation paper and slide the Sec. 2 fabric directly under Sec. 2. Line the sew-side up with the trimmed quarter-inch seam.

Step 7: Lift both fabric pieces to your machine along with the paper. Open the paper and sew on Line 1.



NOTE - Loosen the Glue: When you are done sewing, loosen the glue under Sec. 1. This should be done before you press. The heat from the iron adheres the papers to the fabric and even after removing the paper, there is still remnants left on the fabric. On a light background fabric, this can leave a shadow on your fabric and you can see it from the front side. If you forget, get out your spray bottle and spray the fabric until it is removed.

Flowers for My Wedding Ring

Booklet #2

JNQ 00137P

NP 110 7 Sheets

TP 369 1 Sheet

NP 149 4 Sheets

LP 023 1 Sheet

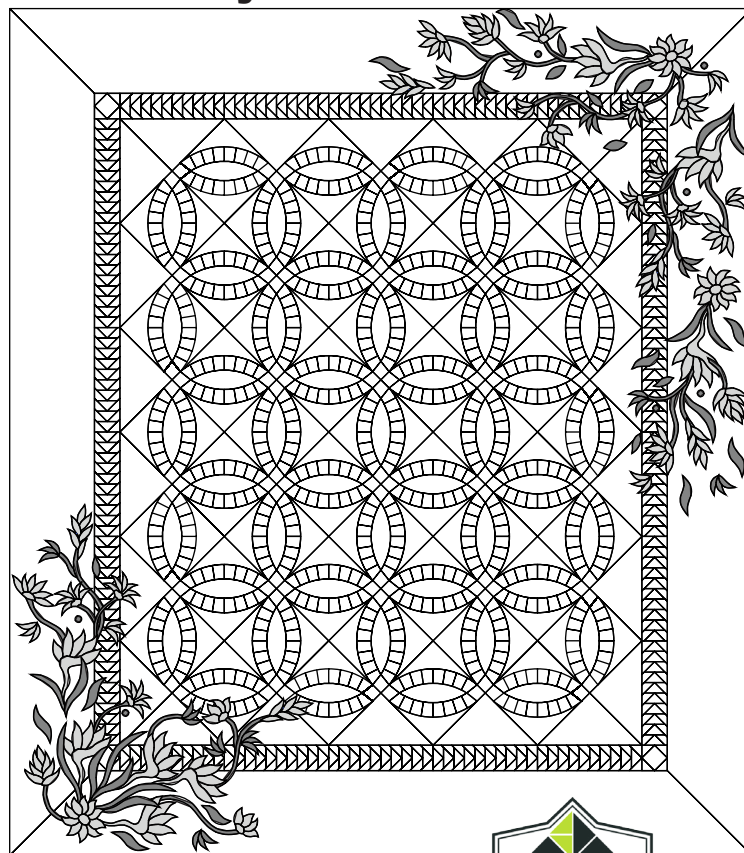
LP 024 1 Sheet

LP 025 1 Sheet

Flowers for My Wedding Ring Yardage Chart

Number of Rings	4 by 5	5 by 5	5 by 6	6 by 6
Quilt Size	87" by 100"	100" by 100"	100" by 112"	112" by 112"
Wedding Ring Extra Foundation Pkgs	N/A	1	1	1
Select (6) Background Fabric (Buy the Yardage Listed below for Each)				
Fabrics B1:a-B1:f Fabrics C1:a-C1:f	1-1/8 yd or (37")	1-1/8 yd or (37")	1-1/2 yd or (49")	1-1/2 yd or (49")
Select (2) Dark and (2) Medium Corner Fabrics (Buy Yardage Listed Below for Each)				
Fabrics A1:a-d, C3	3/8 yd	3/8 yd	3/8 yd	1/2 yds
Pre-Packaged, (48) piece 2-1/2" x 42" Strips, Wedding Ring Arcs, Geese, & Applique				
Total # of 2-1/2" Cut Strips	48 Strips	64 Strips	72 Strips	88 Strips
Strip Sets (48 strips per package)	2 pkgs	2 pkgs	3 pkgs	3 pkgs
Applique Fabric: Flowers, Stem, & Leaves				
Accents (10) each	1/4	1/4	1/4	1/4
Greens (4) each	1/4	1/4	1/4	1/4
Border, Backing, and Binding				
10" Border Fabric	3	3-1/8	3-1/4	3-1/4
Fabric C3 (From Corner Fabric, or:)	1/8	1/8	1/8	1/8
Backing/Binding	9-1/2	9-1/2	10	10

Size: 87" by 100"



► Quiltster Compatible

Quiltworx.com has collaborated with a new company called Quiltster to bring you a fabric auditioning mobile application for our designs. Quiltster will launch to a consumer audience in early 2016 with a layout for **Flowers for My Wedding Ring** that can be colored with your own fabric swatches to preview your quilt before you make it! To get on the mailing list for Quiltster updates, visit Quiltster.com!

Visit us on:



© Copyright: October 2008
Pattern: Flowers for My Wedding Ring
 All rights reserved. No part of this pattern can be reproduced in any form for any commercial purpose without the expressed written permission of Quiltworx.com. The written instructions, foundation papers, graphics, and photographs for this pattern were designed as a package for the purpose of retail sales and as a result, fall under the protection of the federal copyright laws of the United States of America. Extra materials may be obtained from local quilt shops or directly from Quiltworx.com.

Quiltworx.com
Judy Niemeyer Quilting

E-mail: info@quiltworx.com • Web: www.quiltworx.com



Print Date: 07-26-17