

APPLIQUÉ YARDAGE, FLOWERS & STEMS

Flowers (10) assorted 1/4 yd cuts in shades of Wine, Burnt Orange, Lavender, Pink & Gold.
 Leaves & Stems (4) assorted shades of green: 1/4 Yd, Each.
 Small Flowers, Leaves & Stems: An assortment of 2-1/2" strips left over from your strip sets.*

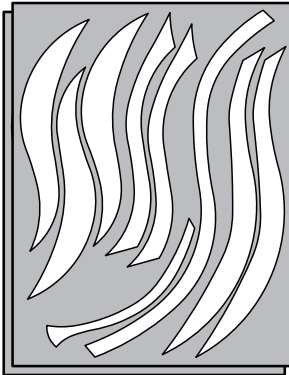
NOTE - * Yardage for Two Corners: This is enough yardage to complete 1 corner or 2 corners as each strip yields enough fabric for both corners.

▶ Cutting out your Applique Templates

Prepare (3) Bags. Label as Stems, Leaves, & Flowers.

Cutting the Stems and Leaves:

Stack the duplicate Sheets together before cutting. Starting with your Stems, use your rotary cutter and cut the tiny tabs that hold the template pieces into the 8-1/2" x 11" Cutout Sheets. **Note: If you are careful, you should be able to stack and cut each template sheet, with the same pieces, together.** When you are done cutting out the stems, clip the like pieces together and place them into

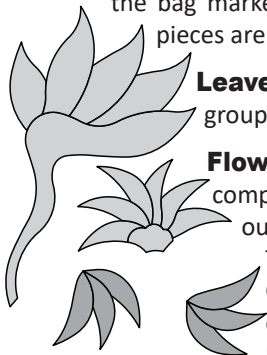


the bag marked: **Stems**. Reference LP 023 for which pieces are Stems versus Leaves and flowers.

Leaves: The leaves are cutout, sorted into like groups and placed into the bag labeled: **Leaves**.

Flowers: The Flowers are cut out as a complete unit, so only clip the tabs around the outside perimeter of each flower group. The petals are not separated at this time.

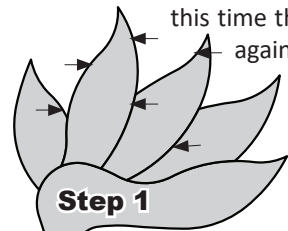
Clip your flower groups together for each design and place them into the bag labeled: **Flowers**.



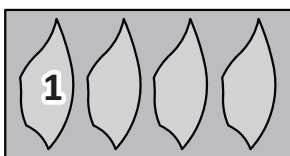
▶ Turn-Under Applique Instructions

Removing the paper on the Stitch-N-Peel Templates:

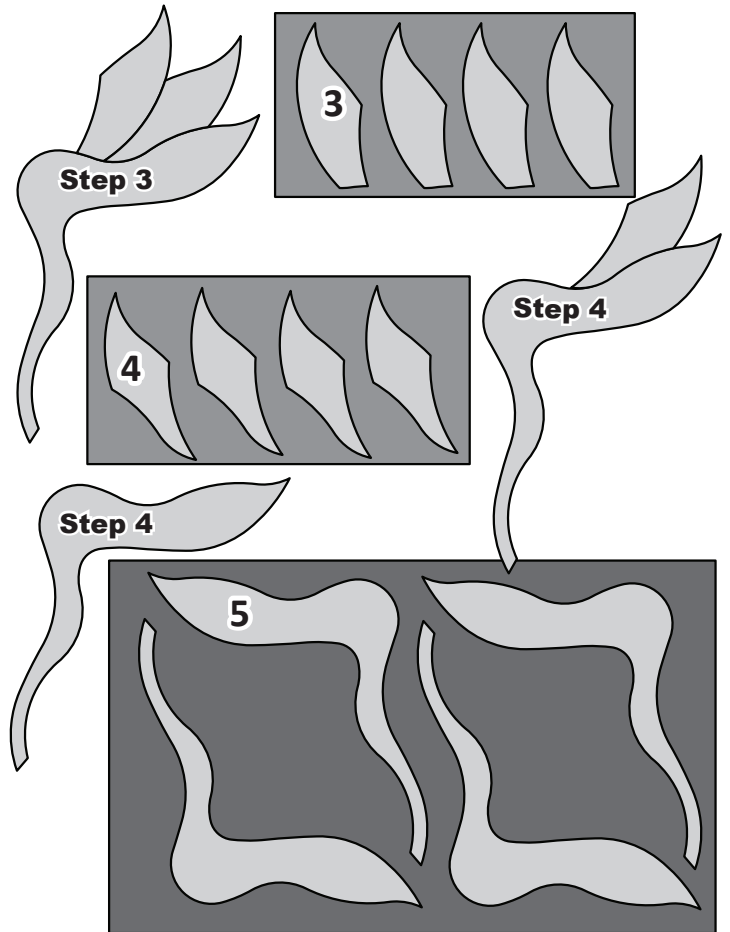
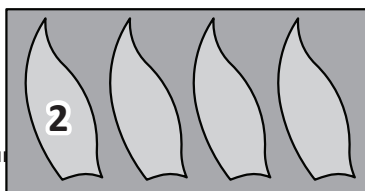
Just prior to adhering each template piece to your fabric, the shiny paper is removed off the backside of each template piece. At this time the sticky side of the template is placed against the wrong side of your fabric. Leave at least 1/4" between each template to cut the turn under edges. When cutting the flowers, each template is cut and place onto the fabric of your choice.



Step 1



Step 2



Trimming Around the Templates: Cut around the outer edge of each template piece, leaving about 3/16" of fabric for the turn-under on the backside of each template.

Gluing the Edges: Using your glue pen apply a small amount of glue on the backside of the fabric, along the edge of the template where the fabric is turned-under.

NOTE - The edges and ends that are tucked under another template are not turned under. These are best left flat to reduce bulk. The seam allowances shown between the arrows on each of the template pieces are referred to as the (No Turn Zone).

Turning Under the Edges: Use the flat end of your Purple Thang, gently fold and press the seam allowance over the edge of the template, pressing the fabric into the glue on the backside of the stabilizer.

Clipping: You will need to clip the fabric along each inside curve on occasion to allow the fabric to roll smoothly over the edge of the inside curve. An outside curve does not need to be clipped. If your seam allowance is 3/16" then your clips should only be 1/8" deep.

