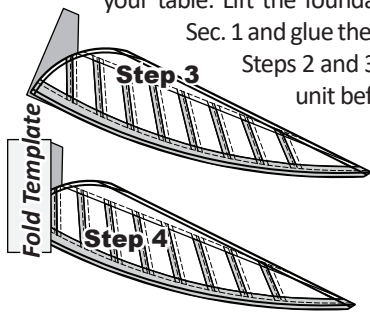


Step 3: Position the first piece of fabric for Sec. 1 *wrong-side-up* on your table. Lift the foundation paper, slide the fabric under Sec. 1 and glue the fabric to the backside of the paper. Steps 2 and 3 are repeated for each foundation unit before moving onto Step 4.

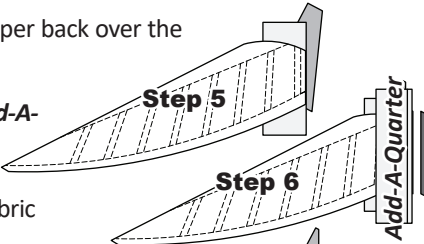


NOTE - Fabric Placement: The *wrong-side* of the fabric is against the backside of the paper. The fabric must extend beyond the edges of the dashed lines to cover the underneath side of Sec. 1.

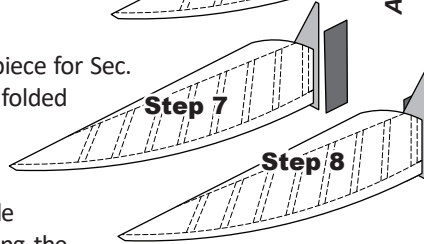
Step 4: Place the fold template over the top of Sec. 1. Line the edge up with the solid black line marked Line 1.

Step 5: Then, fold the paper back over the top of the fold template.

Step 6: Place the *Add-A-Quarter* ruler next to the folded back section lip-side down and trim the fabric with your rotary cutter.



Step 7: Place the fabric piece for Sec. 2, *right-side-up* next to the folded back paper as shown.

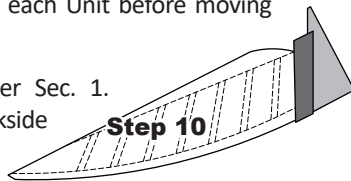


Step 8: Lift the foundation paper, slide the fabric under Sec. 2 lining the sew-side up with the trimmed seam allowance. Make sure the fabric extends beyond the boundaries of the dashed lines for Sec. 2.

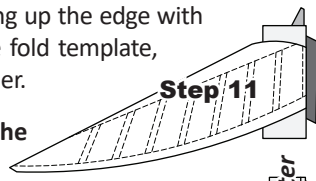
NOTE - Chain Piecing: Repeat Steps 4-8 for each foundation paper before moving onto Step 9.

Step 9: Sew on Line 1. The stitches should start and stop along the edge of the paper. Starting and stopping along the edge of the paper makes it possible to cut the thread ends off when you trim your papers. Complete the sewing on each Unit before moving onto the next step.

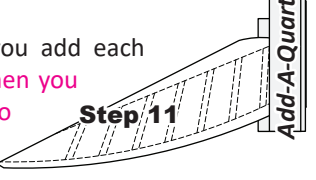
Step 10: Loosen the glue under Sec. 1. Then press the fabric on the backside of each paper.



Step 11: Place the fold template over the top of Sections 1 and 2, lining up the edge with Line 2. Fold the paper back over the fold template, then trim with the *Add-A-Quarter* ruler.



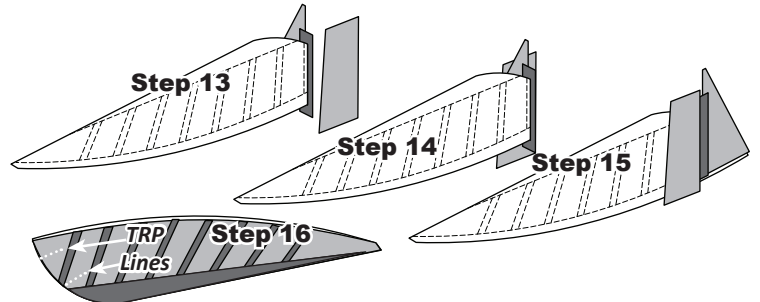
Steps 12 to 15: Repeat the Previous Steps: Continue with the foundation paper piecing, repeating the previous steps, as you add each piece to the foundation paper. **When you get to Section 18, you will need to tear the paper back across all the seams up to Line 17, then fold back and use the Add-A-Quarter ruler to cut your 1/4" seam. You will need to slide the Fold Remplate and Ruler along the edge to accomplish such a long cut.** Find the TRP lines along the bottom



curved edge of the unit. A basting stitch (minimum stitch length of 2.8) is sewn the length of the dots on each (TRP) Line.

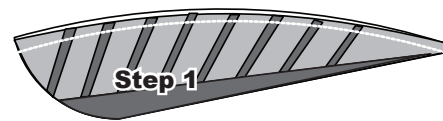
NOTE - The TRP lines along Sec. A2-19: The TRP lines along the long curved edge of the leaf where the bias strip is sewn are not sewn yet. Trim around the bottom of the unit (not along the edge where Sec. 19 will be added).

Your units will look like Step 16 shown below. Follow the directions below for adding Sec. 19, using T-Template A2-19.



ADDING T-TEMPLATE A2-19 TO UNIT A2

Step 1: Locate the basting line along the top edge of your leaf. A basting stitch [set stitch length of at least 2.8] is sewn along on the line referenced as *Basting Stitch Line 18 (Line 16 on Unit A3)*. The basting stitch line printed on the paper is a dashed line.

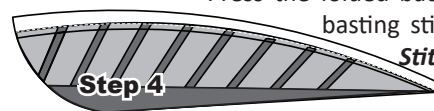


Step 2: The paper is folded back along the edge of the basting stitch as shown. You may need to tear the paper as well in a couple places to get it to fold back.

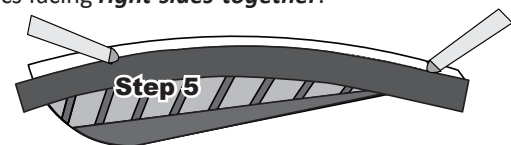
Step 3: Use the rotary cutter and trim off the excess fabric (1/4") along the folded back paper on the basting stitch line. Do not trim off the folded back paper.



Step 4: Flip the paper over and position the leaf *fabric-side-up*. Press the folded back paper flat. Locate the basting stitches along the *Basting Stitch Line* sewn in Step 1.



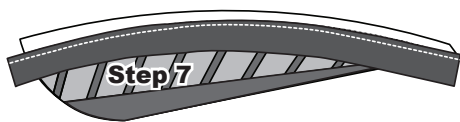
Step 5: Use your glue pen and run a small strip of glue (about 1/8" wide) along the *Basting Stitch Line* on the *right-side* of the fabric. The Basting Stitch Line is your guide. Then, place the *T-Template A2-19* in place. Use pins as necessary to help secure the fabrics facing *right-sides-together*.



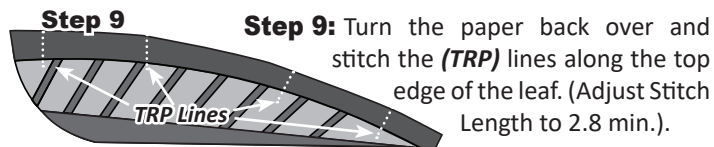
Step 6: After the raw edges are glued together, the pieces are pressed and steamed until the vein fabric lies flat. *Refer to graphic above.

Step 7: Flip the leaf, *paper-side-up*. Set your machine to sew a 1/4" seam allowance and adjust the stitch length to 1.5 to 1.8. The pieces are stitched together on the sew line, referenced as

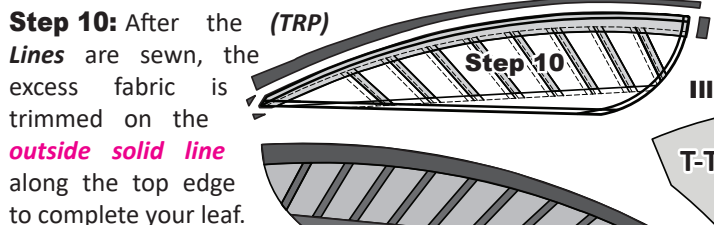
Sew Line 19 (Sew Line 17 on Unit A3). (Graphic shows unit from the front-side after the stitch is sewn.)



Step 8: Flip each unit over, *fabric-side-up* and repress the bias strip, so it covers the edge of the paper, leaving it flat along the top edge of the leaf. You may need to use a little steam to get it to lay down.



Step 9: Turn the paper back over and stitch the (TRP) lines along the top edge of the leaf. (Adjust Stitch Length to 2.8 min.).



Step 10: After the (TRP) Lines are sewn, the excess fabric is trimmed on the *outside solid line* along the top edge to complete your leaf.

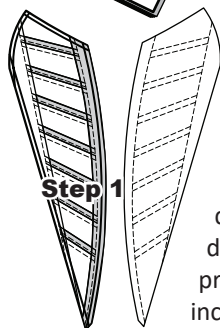


■ SORTING AND STACKING UNIT A3

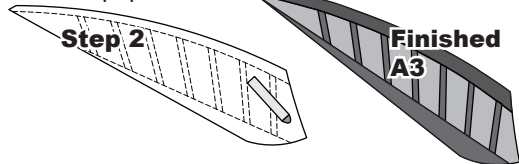
Sort the pieces in Bag #A3 on your table with the templates and fabric pieces facing *right-side-up*. You will have both accent and background pieces, along with the two long sections that are sewn to each side (Sec. 16 and 17) when the main part of the foundation piecing is finished. The stacking begins with Template A3-17 for Sec. 17 on the bottom. The sew sides are aligned at the top. The pieces are then stacked in reverse order, finishing with Template A3-1 for Sec. 1 on top.

■ PAPER PIECING UNIT A3

The process for piecing Unit A3 is identical to Unit A2, except that the unit does not have quite as many pieces and is shaped just a bit differently. Follow the instructions laid out previously to complete the Unit A3 blocks, including adding the T-Template A2-17. When the piecing is complete, trim around all sides of the foundation paper.



the foundation paper.



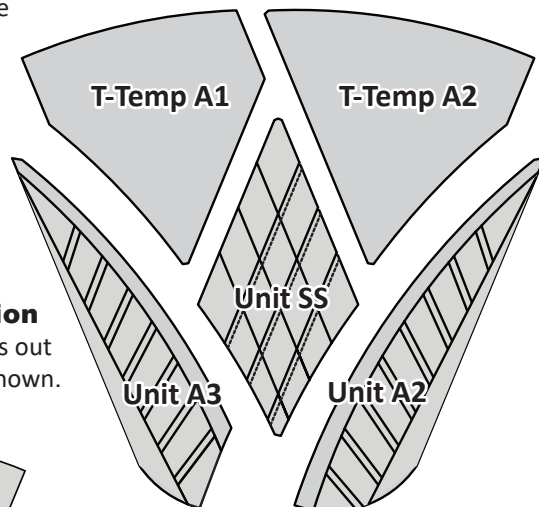
■ ASSEMBLE THE CENTER WEDGE

Follow the assembly and pressing graphics that follow to sew each wedge together. Remove the paper as you sew each seam together. For more information on removing the paper, refer to the general instructions for your pattern.

Match up your registration lines and also, pay attention to your smart corners! With these helpful assembly tools, your wedges will sew together perfectly!

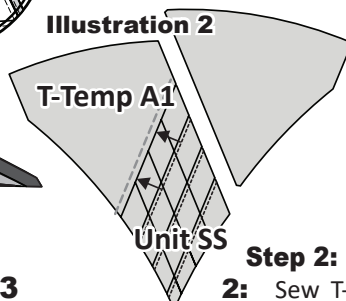
Press the seams in the direction of the arrows and dashed line. Do not assemble the wedges at this time.

Illustration 1



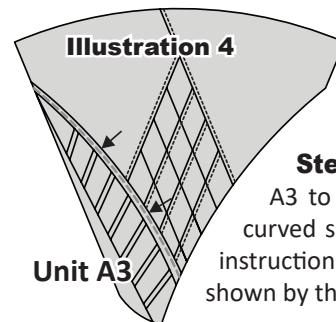
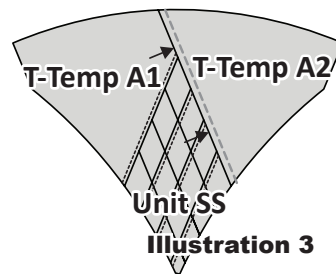
Step 1: Illustration 1: Lay all (8) wedges out on a design wall as shown.

Illustration 2



Step 2: Illustration 2: Sew T-Template A1 to Unit SS, pressing the seams toward T-Template A1.

Step 3: Illustration 3: Sew T-Template A2 to T-Template A1/Unit SS, pressing the seams towards T-Template A2.



Step 4: Illustration 4: Sew Unit A3 to T-Template A1/Unit SS. This is a curved seam, so follow the curved piecing instructions on Page 16. Press the seam as shown by the arrows.

Step 5: Illustration 5: Sew Unit A2 to Unit SS/T-Template A2. A curved seam is required again, then press the seam as shown by the arrows.

Step 6: Illustration 6: Add T-Template A1-6 to the Magnolia Leaf Wedge shown in Illustration 5. Curved piecing is again required to add this T-Template. Remember, the TRP lines and the Smart Corners will help this piece go on perfectly! Use pins and glue as appropriate. Press the seams as shown by the arrows.

