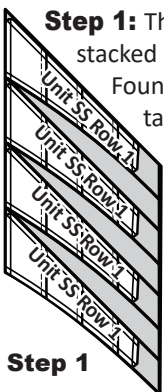


have a fabric swatch matching the strip you are supposed to sew into the identified location. You will pair each stack of Foundation Sheets with (1) Stack of fabrics from Bag #A6.

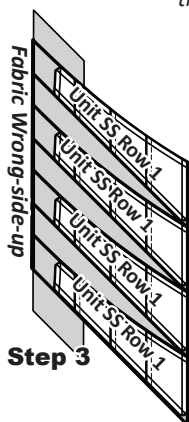
## FOUNDATION PAPER PIECING: BAG #A6

**Step 1:** The fabric pieces have already been pre-sorted and stacked to begin the piecing process. Start by placing Foundation Sheet SS1 from Stack 1 *right-side-up* onto a table and positioning it as shown.



**Step 1**

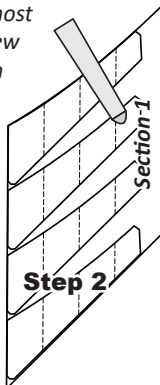
**NOTE - Tracing the Dashed Lines:** Place the foundation paper onto a light table. Flip the foundation paper over and trace the dashed lines printed on the front side of the paper, onto the backside of the paper. Tracing the lines is a preferred technique for most students when they are beginning a new Unit. Once you become familiar with the foundation units, you can skip the tracing steps of getting started.



**Step 3**

**Step 2:** Find Sec. 1 on the foundation paper. Place a small amount of fabric glue on the *backside* of the paper under Sec. 1. {Check the swatch on the foundation paper for color placement}.

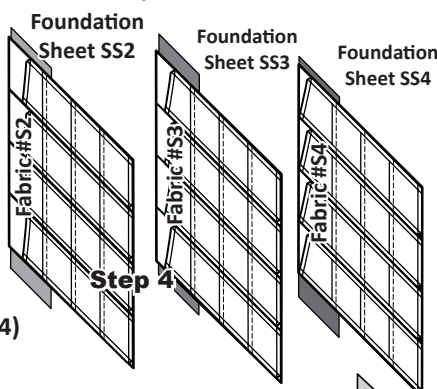
**Step 3:** Position the first piece of fabric for Sec. 1 *wrong-side-up* on your table. Lift the foundation paper, slide the fabric under Sec. 1 and glue the first piece of fabric to the backside of the paper.



**Step 2**

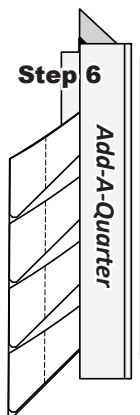
**NOTE - Fabric Placement:** The wrong-side of the fabric is against the backside of the paper. The fabric must extend beyond the edges of the dashed lines to cover the underneath side of Sec. 1.

**Step 4:** Repeat Steps 1 and 3 for Foundation Sheets SS2 to SS4, using the first (4) strips in Stack 1. If you wish to piece both stacks at the same time, then complete these steps with Foundation Sheets SS1 to SS4 and the first (4) strips in Stack 2 as well.



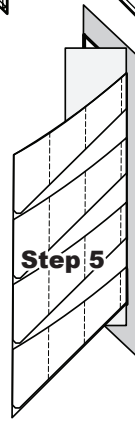
**Step 4**

**Step 5:** Place the fold template over the top of Sec. 1, lining the edge up on the solid black sew line labeled as Line 1. Fold the paper back over the top of the fold template.



**Step 6**

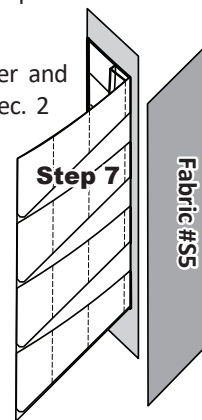
**Step 6:** Place the *Add-A-Quarter* ruler next to the folded back section on the paper lip-side down and trim the fabric with your rotary cutter. This leaves you with a quarter-inch seam allowance, which is lined up with the



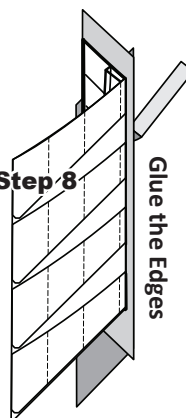
**Step 5**

sew side on the next piece of fabric. Repeat Steps 5 to 6 for each foundation sheet before moving to Step 7.

**Step 7:** Remove both the *Add-A-Quarter* ruler and the fold template. Place the fabric piece for Sec. 2 (Fabrics #S5 to #S8, for Foundation Sheets SS1 to SS4, respectively), *right-side-up* next to the folded back paper as shown below.



**Step 7**



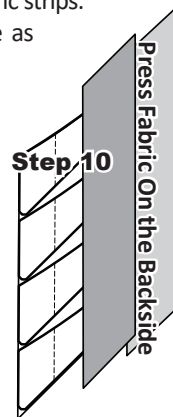
**Step 8**

Glue the Edges

**Step 8:** Lift the foundation paper and slide the fabric under Sec. 2. Line the sew-side up with the trimmed quarter-inch seam allowance. Apply a small amount of glue along the raw edges of both fabric strips. This will keep the edges secure as you feed the fabric between the presser foot and feed dogs as you sew on Line 1. Make sure the fabric extends beyond the boundaries of the dashed line marks for Sec. 2.

**Step 9:** Sew on Line 1. The stitches should start and stop about 1/8" above the top of the paper and at the end of the paper.

**NOTE - Loosen the Glue:** Loosen the glue under Sec. 1. This should be done before you press.

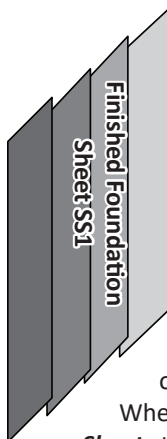


**Step 10**

Press Fabric On the Backside

**Step 10:** Flip the papers over, press the fabric as shown below.

**Repeating Steps 5-10:** Steps 5-10 are repeated when adding the next two strips (Fabrics #S9 to #S12 for Foundation Sheets SS1 to SS4 for Strip 3, and Fabrics #13 to #16 for Foundation Sheets SS1 to SS4 for Strip 4, respectively). Only the line numbers change. Don't forget to make sure you are starting with the Foundation Sheet SS1, then SS2, then SS3, and finally SS4! If you restack the papers in order as noted when you sew, it will prevent you sewing the wrong strip on your Foundation Sheets.



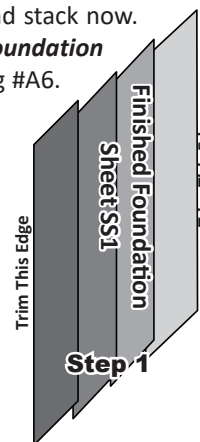
**Foundation Sheets in Stack 2:** If you did not complete these at the same time as the others, then complete the second stack now.

When you are done, clip the *Foundation Sheets* together and place back into Bag #A6.

The paper is not removed at this time.

## PART 2: TRIMMING AND CUTTING THE PAPERS

**Step 1:** When the piecing is finished, the excess fabric and paper is trimmed off along the two side edges (only) of each foundation sheet. The graphic to the right only shows Foundation Sheet SS1.



**Step 1**

**Step 2:** For Foundations SS1 and SS2, note that there are Registration (TRP) Lines on the curved edges. Before completing Step 3, reset your stitch length to at least 2.8 and sew a basting stitch on each of the TRP Lines.