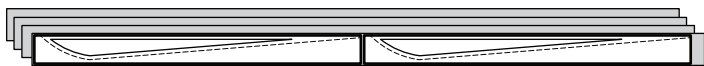


► **Unit A2 Accent Fabric A11**

Step 1: Cut (4) 2" x 42" strips from Fabric A11.

Step 2: Place the strips into (1) stack, *right-side-up*, on a cutting table.



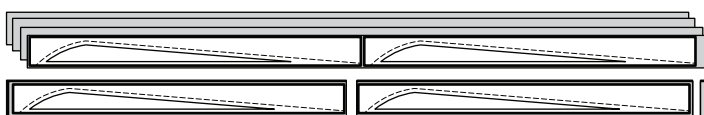
Step 3: Use the *Unit A2-18 Accent Template* to cut (4) stacks of rectangles the shape of the Template.



Step 4: Clip the rectangles together with the Template on the top and place these back into Bag #A2.

► **Unit A3 Accent Fabric A8**

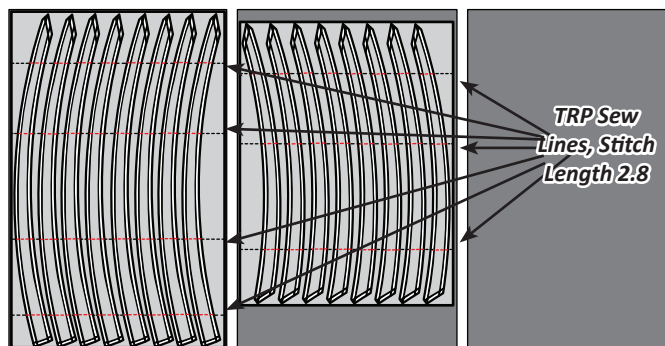
Step 1: Repeat the same instructions for *Unit A3-16 Accent Template* and Fabric A8 as you just did for the *A2-18 Accent Template* and Fabric A11. When the strips are cut apart and clipped together, place the stack back into Bag #A3.



► **Unit A2 & A3 Accent Fabric A9**

Step 1: Cut (1) 22-1/2" x 42" strip from Fabric A9.

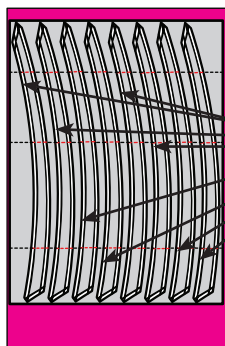
Step 2: Place the *T-Template A2-19 Layout Sheet* and *T-Template A3-17 Layout Sheet* to cut a rectangle the size of each Layout Sheet. (Graphic at top of next column).



Step 3: Take each Layout Sheet and piece of fabric beneath to the sewing machine. Set your machine stitch length to a minimum of 2.8.

Step 4: Find the dashed lines that line up with the TRP lines across the sheet and sew down the length of the layout sheet along each line.

Step 5: Then, complete a rough cut between each T-Template on each sheet. You only need to trim the concave edge at this point. The rest will be trimmed later, after the pieces are sewn to the foundation paper. Place the trimmed pieces for Unit A2 into Bag #A2 and the pieces for Unit A3 into Bag #A3 to await assembly of Group A.

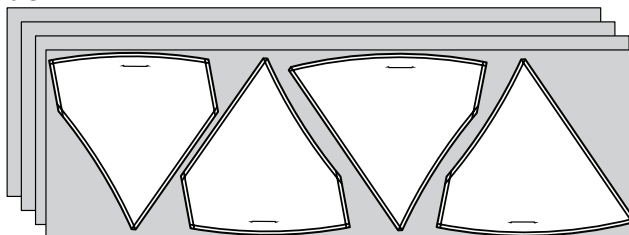


Trim the concave edge only, between each Template for both A2-19, and A3-17. Only A3-17 is shown.

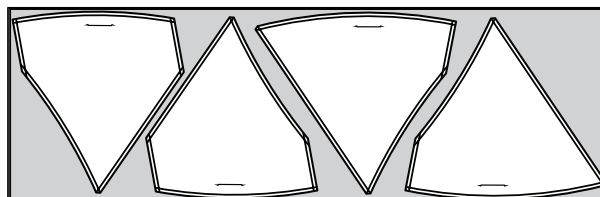
► **T-Templates A-1 and A-2 Accent Fabric A12**

Step 1: Cut (4) 13-1/2" x 42" strips from Fabric A12.

Step 2: Place the strips into (1) stack, *right-side-up*, on a cutting table.



Step 3: Use the *T-Template A-1* and *T-Template A-2* to cut (2) stacks of pieces with each T-Template to the shape of each T-Template.



Step 4: Clip the pieces together with the T-Template on the top and follow the directions in the next section before placing these back into Bag #A5.

■ **ADDING REGISTRATION LINES (TRP) TO T-TEMPLATES A-1 AND A-2**

Step 5: Carefully place your stack of fabrics with the template on top at the machine and make sure all the sides are in line with the template. Remove the thread from your machine and needle stitch where each TRP Line is located. Then, remove the template, replace the thread, and on each template fabric piece, sew over the needle-punched holes to add the basting stitch. Use a stitch length of at least 2.8. Once they are marked, carefully trim away the excess threads, then clip them back together and place them back into Bags #A5.

■ **STACKING THE FOUNDATION SHEETS:**

These instructions have been written to teach you how to chain piece all of the Foundation Sheets at one time. The first step is to create (2) stacks of your Foundation Sheets using (1) SS1 to SS4, in each. SS4 will be on the bottom, SS1 will be on the top. See the Foundation Sheet Stacking Graphics at the top of the next page. Note that if you have put fabric swatches on the sheets as directed in the cutting instructions, the top edge of each sheet that you can see as you stack them, will have a fabric swatch matching the strip you are supposed to sew into the identified location. You will pair each stack of Foundation Sheets with (1) Stack of fabrics from Bag #A4.

■ **FOUNDATION PAPER PIECING: BAG #A4**

Step 1: The fabric pieces have already been pre-sorted and stacked to begin the piecing process. Start by placing Foundation Sheet SS1 from Stack 1 *right-side-up* onto a table and positioning it as shown.

NOTE - Tracing the Dashed Lines: Place the foundation paper onto a light table. Flip the foundation paper over and trace the dashed lines printed on the front side of the paper, onto the backside of the paper. Tracing the



Step 1