

Blank Congo Border

Mixer Pattern

96" x 96"

GROUP F: BLANK CONGO BORDER INSTRUCTIONS

Ziploc Storage Bags: You will need (1) bag to complete the organization for these instructions.

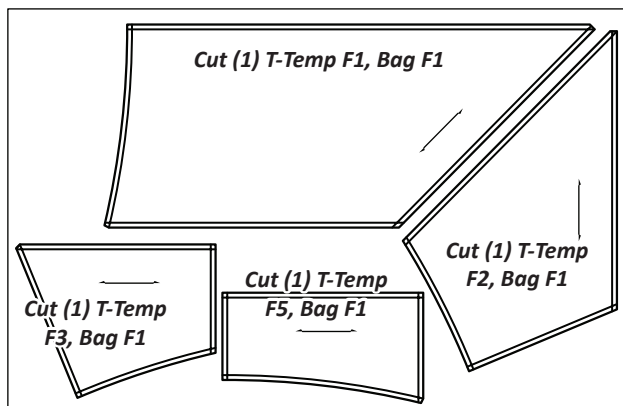
- Bag #F1: (1) of each T-Template F1 to F8

► Preparing the Foundation Papers:

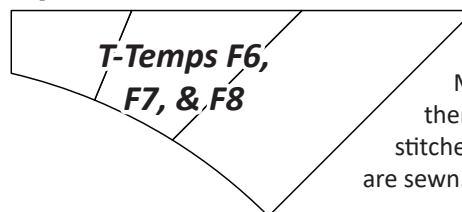
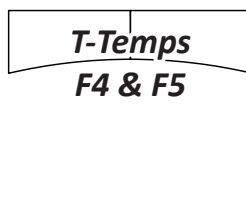
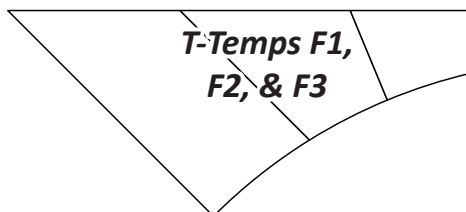
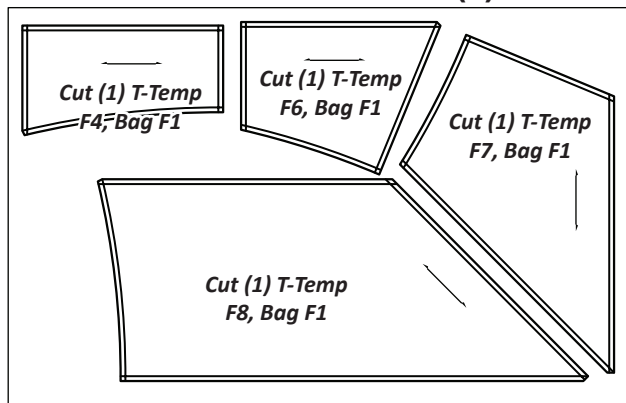
Foundation Papers: This booklet includes enough foundation papers to complete (1) 96" x 96" Border. The foundation papers and templates for this pattern are printed on newsprint. Newsprint is lightweight and tears away from your stitches without damaging the threads. Please pull apart this package and check, at this time, to make sure your pattern includes all of the newsprint shown below.

Step 1: Cut out (1) each of the T-Templates F1 to F8 [TP 340 & 341].
*Refer back to General Information for Foundation papers and templates for additional instructions on how to prepare your foundation papers and templates.

► (1) TP 340



► (1) TP 341



► Border Fabric Information:

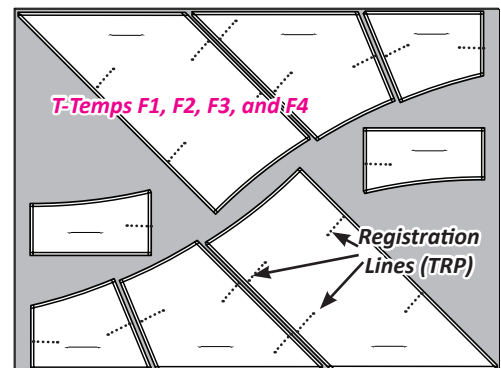
The table below includes yardage and a fabric number for the Congo Border T-Templates. Paste a swatch of your chosen fabric in the box in the Assigned Colors column!

T-Temps F1 to F8: Make (4) of Each		
GROUP-F FABRIC #	YARDAGE INCH	ASSIGNED COLOR
Fabric F1 T-Templates F1 to F8	3-5/8 yd or (126")	FABRIC SWATCH

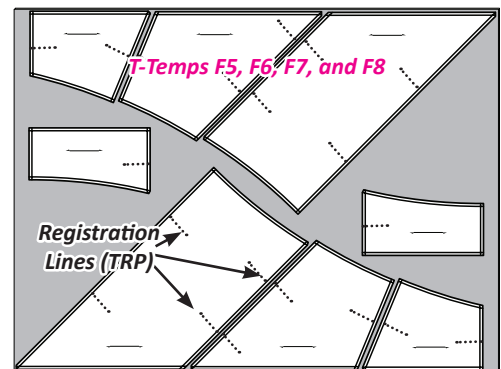
CUTTING INSTRUCTIONS

Step 1: Cut (4) 31-1/2" x 42" strips of fabric and stack them right-side-up.

Step 2: Position the T-Templates F1, F2, F3, and F4 onto (2) pieces in the fabric stack as shown to the right. Use a Ruler and rotary cutter to carefully cut around each T-Template.



Step 3: Repeat this process with the other (2) pieces and T-Templates F5, F6, F7, and F8.



Step 4: The T-Templates have registration lines (marked as dotted lines with a TRP as shown in the graphic above). Unthread your machine and sew through the paper and the stack of fabrics with just the needle, marking the registration lines on each fabric.

Step 5: Re-thread the machine, and set the stitch length = 2.8 or greater. Sew on the lines marked by the needle-punching. Trim the threads, clip the fabric pieces to the appropriate template.

Step 6: Sew (4) groups together as shown below, then place all the border pieces back into Bag #F1. Match the TRP lines, then remove the basting stitches when the seams are sewn.