

## GROUP D CUTTING INSTRUCTIONS

Before you begin cutting your fabrics, take a few minutes to organize your cutting. Cut and paste small fabric swatches onto the foundation papers and their respective Templates and Template Layout Sheets. A small swatch of each color, Fabric D1-D8, pasted onto the layout sheets and their respective Sec. # on which they will be sewn will keep you organized as you begin cutting. If you are cutting for (2) fabric groups, Group A and Group B then cut and paste for both groups.

**NOTE - Remember, if you have selected four colors for your background pieces, you will need to calculate your own fabric requirements. If you are making the Rainbow Quilt, please reference the Rainbow cutting instructions provided in the Introduction Booklet.**

### ► Cutting Hints Unit D1, Background (TLS)

One 7-1/4" by 42" strip yields enough fabric to complete (4) units.



**Fabric D1a:** If one color is being used for the background pieces, cut (2) 7-1/4" by 42" strips from Fabric D1:a to complete (8) units from the same color.

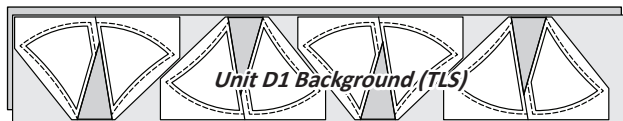


**Fabric D1a & D1b:** If two colors are being used for the background pieces, cut (1) 7-1/4" by 42" strip from each Fabric to complete the (4) units from each color.



### Fabric D1: Unit D1 Background (TLS)

**Step 1:** Stack the strips facing *right-side-up*. Arrange the colors alphabetically if needed, ending with Fabric D1:a on the top.



**Step 2:** Position the *Unit D1 Background Template Layout Sheet* onto your stack and subcut (8) pieces matching the size and shape of the Template Layout Sheet.

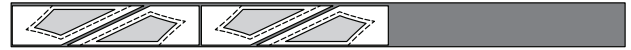


**Step 3:** Re-Stack the (8) pieces *right-side-up* into one pile. Center the *Template Layout Sheet* onto the fabric pieces. Using your ruler and rotary cutter, slice through the paper and fabric on each Cut Line to separate the templates. Using large paper clips, clip the templates and fabric pieces together and place the pieces back into Unit Bag D-1.



### ► Cutting Hints Unit D1 Accent

One 3" by 42" strip yields enough fabric to complete (4) units.



**Fabric D2a:** If one color is being used for the accent pieces, cut (2) 3" by 42" strips from Fabric D2:a to complete (8) units from the same color.

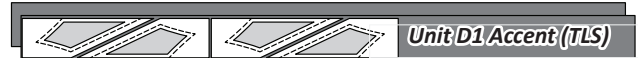


**Fabric D2a & D2b:** If two colors are being used for the accent pieces, cut (1) 3" by 42" strip from each fabric to complete (4) units from each color.



### Fabric D2: Unit D1 Accent (TLS)

**Step 4:** Stack the strips facing *right-side-up*. Arrange the colors alphabetically if needed, ending with Fabric D2:a on top.

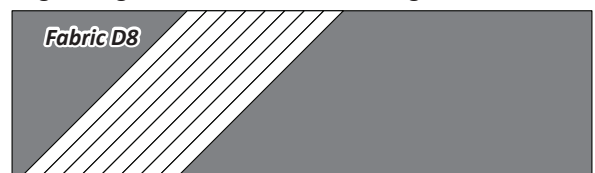


**Step 5:** Position the *Unit D1 Accent Template* onto your stack and cut (8) pieces. Clip the template and fabric pieces together and place into Unit Bag D-1.



### ► Cutting Hints Unit D1 Accent Vein

**Step 6:** This pattern includes an option to add a small strip of fabric along the curved edge of Unit D1. The small strip of fabric adds a touch of color between Units D1 and D2 that appears to look like a piping. We refer to this strip as a vein throughout the instructions. The cover quilt for Booklet 1, *Vintage Rose Queen* made with the Passion Fruit collection, is the only quilt sample we made that shows the vein. Before cutting these pieces, you may want to audition a few colors to make sure you like the end results. The vein finishes at 1/4" wide. One 18" strip yields (8) strips cut on the bias. The strips are cut with a 45 degree angle, 1-1/4" wide. Place in Bag D-1.



### ► Cutting Hints Unit D2, Background (TLS)

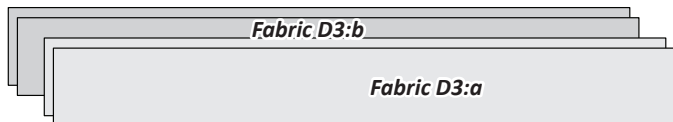
One 5-1/4" by 42" strip yields enough fabric to complete (2) units.



**Fabric D3a:** If one color is being used for the background pieces, cut (4) 5-1/4" by 42" strips from Fabric D3:a to complete (8) units from the same color.



**Fabric D3a & D3b:** If two colors were selected for the background pieces, cut (2) 5-1/4" by 42" strips from each fabric to complete the (4) units from each color.



### Fabric D3: Unit D2 Background (TLS)

**Step 7:** Stack the strips facing *right-side-up*. Arrange the colors alphabetically if needed, ending with Fabric D3:a on the top.

**Step 8:** Position the *Unit D2 Background Template Layout Sheet* onto your stack and subcut (8) pieces matching the size and shape of the Template.



**Step 9:** Re-Stack the pieces *right-side-up* under the *Template Layout Sheet*. Slice through the paper and fabric on each Cut Line to separate the templates. Clip the templates and fabric pieces together and place the pieces back into Unit Bag D-2.



### ► Cutting Hints Unit D2 Accent-1

One 6-1/2" by 42" strip yields enough fabric to complete (4) units.



**Fabric D4a:** If one color is being used for the accent pieces, cut (2) 6-1/2" by 42" strips from Fabric D4:a to complete (8) units from the same color.



**Fabric D4a & D4b:** If two colors are being used for the accent pieces, cut (1) 6-1/2" by 42" strip from each fabric to complete (4) units from each color.



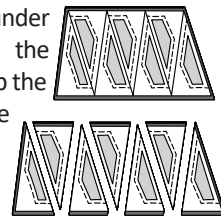
### Fabric D4: Unit D2 Accent-1 (TLS)

**Step 10:** Stack the strips facing *right-sides-up*. Arrange the colors alphabetically if needed, ending with Fabric D4:a on top.

**Step 11:** Position the *Unit D2 Accent-1 Template Layout Sheet* onto your stack and subcut (8) pieces the size and shape of the Template Layout Sheet.



**Step 12:** Re-Stack the pieces *right-side-up* under the *Template Layout Sheet*. Slice through the paper and fabric to separate the templates. Clip the template and fabric pieces together and place into Unit Bag D-2.



### ► Cutting Hints Unit D2 Accent-2

One 6-1/2" by 42" strip yields enough fabric to complete (4) units.



**Fabric D5a:** If one color is being used for the accent pieces, cut (2) 6-1/2" by 42" strips from Fabric D5:a to complete (8) units from the same color.



**Fabric D5a & D5b:** If two colors are being used for the accent pieces, cut (1) 6-1/2" by 42" strip from each fabric to complete (4) units from each color.



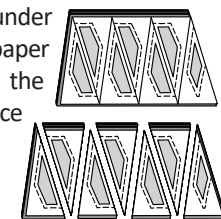
### Fabric D5: Unit D2 Accent-2 (TLS)

**Step 13:** Stack the strips facing *right-side-up*. Arrange the colors alphabetically if needed, ending with Fabric D4:a on top.

**Step 14:** Position the *Unit D2 Accent-2 Template Layout Sheet* onto your stack and subcut (8) pieces the size and shape of the Template Layout Sheet.

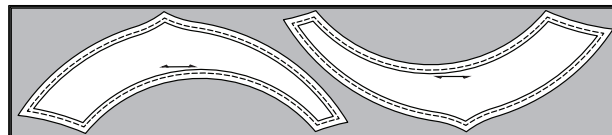


**Step 15:** Re-Stack the pieces *right-side-up* under the *Template Layout Sheet*. Slice through the paper and fabric to separate the templates. Clip the template and fabric pieces together and place into Unit Bag D-2.



### ► Cutting Hints Unit D3, Background Template D3-1

One 9" by 42" strip yields enough fabric to complete (2) units.



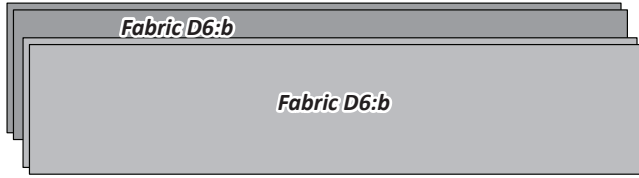
**Fabric D6a:** If one color is being used for the background pieces, cut (4) 9" by 42" strips from Fabric D6:a to complete (8) units from the same color.



## FOUNDATION PAPER PIECING: UNIT D1

*NOTE - Tracing the Dashed Lines: Optional*

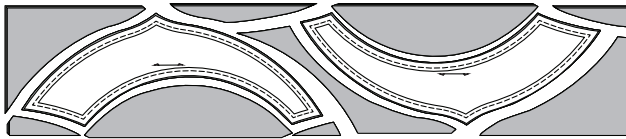
**Fabric D6a & D6b:** If two colors are being used for the background pieces, cut (2) 9" by 42" strips from each fabric to complete the (4) units from each color.



### Fabric D1: Unit D1 Background D3-1

**Step 16:** Stack the strips facing *right-side-up*. Arrange the colors alphabetically if needed, ending with Fabric D1:a on the top.

**Step 17:** Position the *Unit D3 Background Template D3-1* onto your stack and subcut (8) pieces. Clip the templates and fabric pieces together and place the pieces back into Unit Bag D-3.



### ▶ Cutting Hints Unit D3 Accent Template D3-2

One 4-1/2" by 42" strip yields enough fabric to complete (4) units.



**Fabric D7a:** If one color is being used for the accent pieces, cut (2) 4-1/2" by 42" strips from **Fabric D7:a** to complete (8) units from the same color.



**Fabric D7a, & D7b:** If two colors are being used for the accent pieces, cut (1) 4-1/2" by 42" strip from each fabric to complete (4) units from each color.



### Fabric D7: Unit D3 Accent Template D3-2

**Step 18:** Stack the strips facing *right-side-up*. Arrange the colors alphabetically if needed, ending with Fabric D7:a on top.

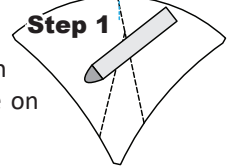
**Step 19:** Position the *Unit D3 Accent Template D3-2* onto your stack and cut (8) pieces. Clip the template and fabric pieces together and place into Unit Bag D-3.



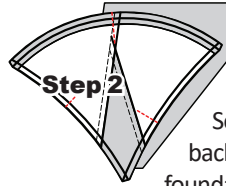
## STACKING: UNIT D1, UNIT BAG D-1

Position the templates and fabric pieces in numerical order facing *right-side up*, with the *sew-sides* aligned at the top. Sec. 1 does not have a sew side.

**Stacking:** The stacking process begins with the largest Sec. number on the bottom. The pieces are stacked in reverse order finishing with Sec. 1 on top.

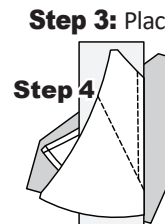


**Step 1:** Find Sec. 1 on the foundation paper. Place a small amount of fabric glue on the *backside* of the paper under Sec. 1.

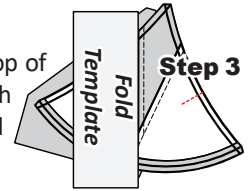


**Step 2:** Position the first piece of fabric for Sec. 1 *wrong-side-up* on your table. Lift the foundation paper, slide the fabric under Sec. 1. Glue is used to adhere the fabric to the backside of the paper. Repeat Steps 1 and 2 for each foundation unit.

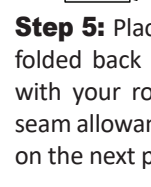
*NOTE - Fabric Placement: The wrong-side of the fabric is against the backside of the paper. The fabric must extend beyond the edges of the dashed lines to cover the underneath side of Sec. 1.*



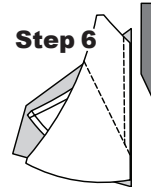
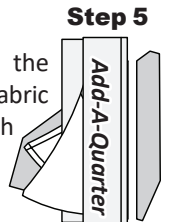
**Step 3:** Place the fold template over the top of Sec. 1. Line the edge up with the solid black line marked Line 1.



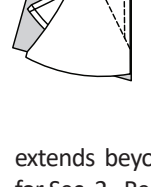
**Step 4:** Fold the paper back over the top of the fold template.



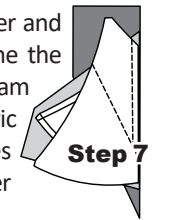
**Step 5:** Place the *Add-A-Quarter* ruler next to the folded back section lip-side down and trim the fabric with your rotary cutter. This leaves a quarter-inch seam allowance, which is lined up with the sew side on the next piece of fabric.



**Step 6:** Place the fabric piece for Sec. 2, *right-side up* next to the folded back paper as shown.

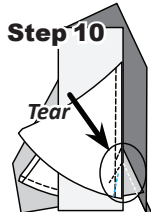
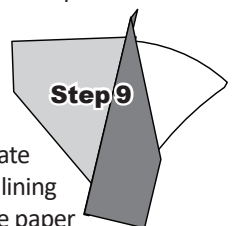


**Step 7:** Lift the foundation paper and slide the fabric under Sec. 2. Line the sew-side up with the trimmed seam allowance. Make sure the fabric extends beyond the boundaries of the dashed lines for Sec. 2. Repeat **Steps 3-7** for each foundation paper before moving onto Step 8.



**Step 8:** Sew on Line 1. The stitches should start and stop about 1/8" past the beginning and the end of each stitch line. Complete the sewing on each Unit before moving onto the next step.

**Step 9:** Loosen the glue under Sec. 1, then press the fabric pieces open on the backside of each paper.



**Step 10:** Position the fold template over the top of Sections 1 and 2, lining the edge up with Line 2. Fold the paper back and tear the paper along the stitches on Line 1. Stop tearing when you hit the fold template.

*NOTE - Tear Back the Paper: Tearing the paper along the stitches allows the fabric to relax making it possible to place the Add-A-Quarter ruler along the folded edge.*

**Step 11:** Trim the fabric with the *Add-A-Quarter* ruler.

