

# Vintage Rose

## Booklet 3, Group B, Units B1-B4 & S1-S4

**Booklet 3:** Includes the Foundation Papers, Templates, Template Layout Sheets, and Instructions needed to complete:

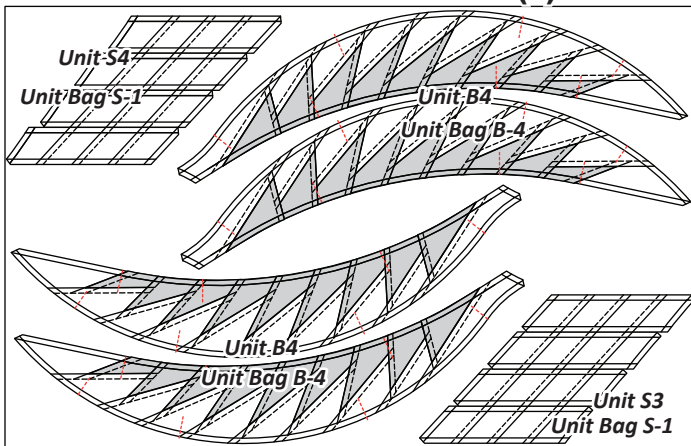
- Units B1-B4 & Units S1-S4: Rose Bud and Thorns

**Newsprint:** The following newsprint is included in Booklet 2.

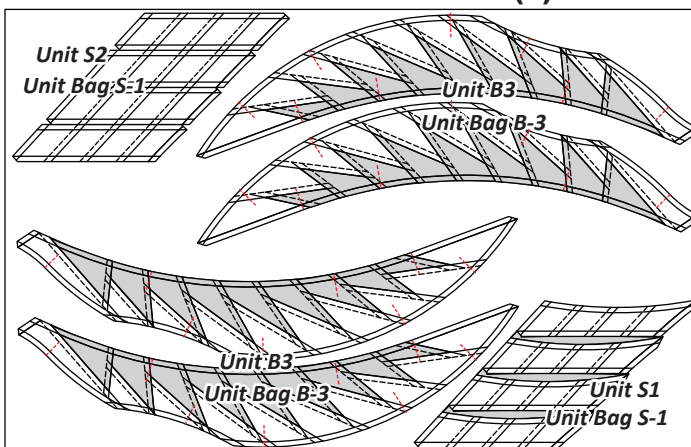
- NP 434 Unit B4: Unit S3, S4, & B4 2 Sheet
- NP 435 Unit B3: Unit S1, S2, & B3 2 Sheet
- NP 539 Unit B1 & B2 1 Sheet
- TP 254 Group B: Templates 1 Sheet
- TP 255 Group B: Templates 1 Sheet
- TP 287 Group B: Templates 2 Sheet

The Foundation Papers, Templates and Template Layout Sheets are cut out at this time and placed in the assigned bags listed below the newsprint graphics. Reference Page 3 of the Instruction Booklet under *\*Foundation Papers and Templates* on how to cut out the Foundation Papers and Template Layout Sheets.

### ▶ (2) NP 434



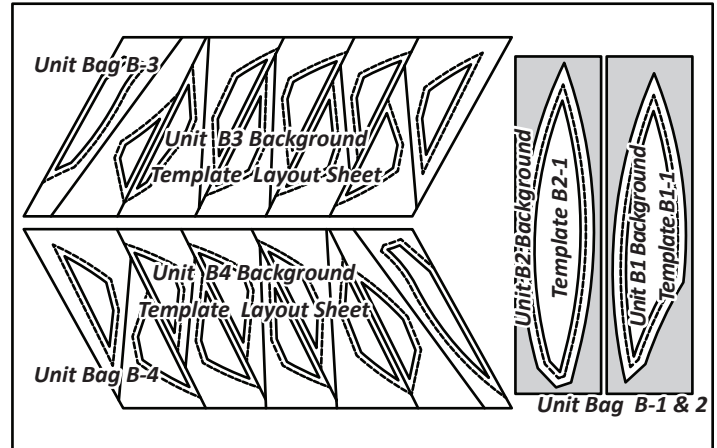
### ▶ (2) NP 435



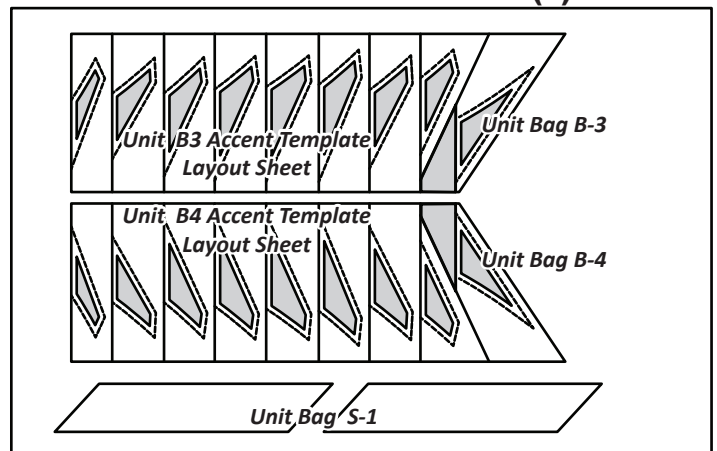
**Ziploc Bags:** (4) large Ziploc bags are needed to keep your fabrics, templates, and papers organized. Label as follows:

- Group B: [Unit Bag B-1 & 2] [Unit Bag B-3] [Unit Bag B-4]
- Group B: [Unit Bag S-1]

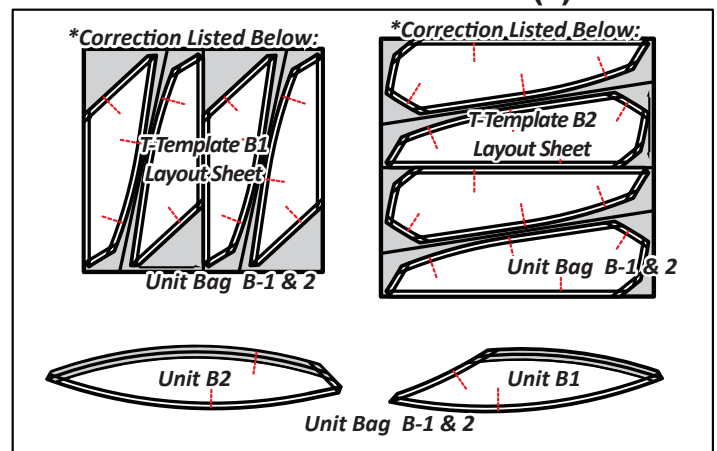
### ▶ (1) TP 254



### ▶ (1) TP 255



### ▶ (2) TP 287



**\*Corrections:** Please make the following correction for the Cut Sizes, on both T-Templates B1 & B2 [TP 287].

- \*T-Template B1 Layout Sheet: Cut Size 11" by 42" Strips
- \*T-Template B2 Layout Sheet: Cut Size 13" by 42" Strips