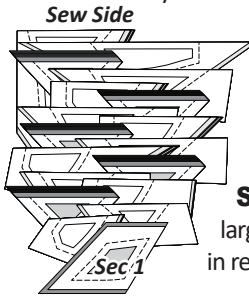


## STACKING: UNIT A, UNIT BAG A-1

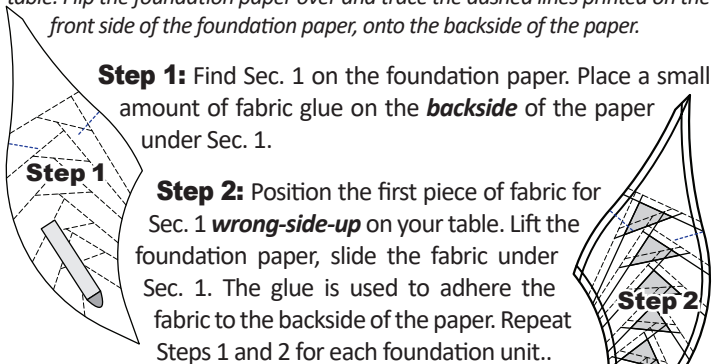
**Organization:** Arrange the colors before you begin the stacking process. It helps to mark the Template A-2 papers with the section # shown in the Fabric Swatch Chart in the Fabric # Reference column. If you have cut from (2) colors, stack the colors with Group B on the bottom and Group A on the top. As shown to the left, stack the templates and fabric pieces in numerical order facing *right-side up*, with the *sew-sides* aligned at the top. Sec. 1 does not have a sew side.



**Stacking:** The stacking process begins with the largest Sec. # on the bottom. The pieces are stacked in reverse order finishing with Sec. 1 on top.

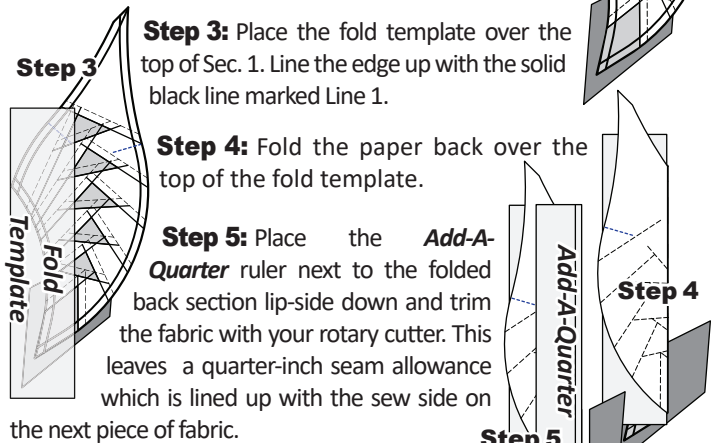
## FOUNDATION PAPER PIECING: UNIT A

**NOTE - Tracing the Dashed Lines:** Place the foundation paper onto a light table. Flip the foundation paper over and trace the dashed lines printed on the front side of the foundation paper, onto the backside of the paper.



**Step 1:** Find Sec. 1 on the foundation paper. Place a small amount of fabric glue on the *backside* of the paper under Sec. 1.

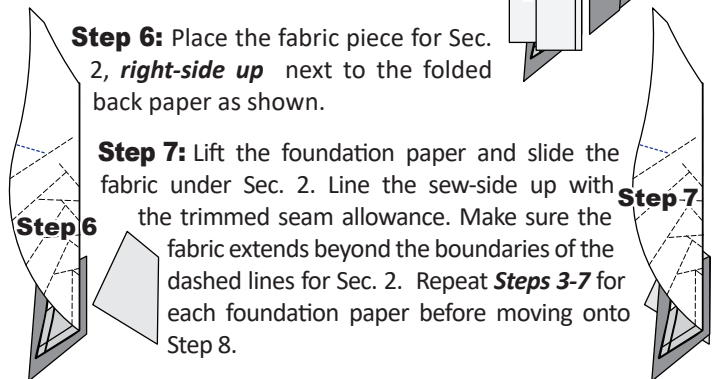
**Step 2:** Position the first piece of fabric for Sec. 1 *wrong-side-up* on your table. Lift the foundation paper, slide the fabric under Sec. 1. The glue is used to adhere the fabric to the backside of the paper. Repeat Steps 1 and 2 for each foundation unit..



**Step 3:** Place the fold template over the top of Sec. 1. Line the edge up with the solid black line marked Line 1.

**Step 4:** Fold the paper back over the top of the fold template.

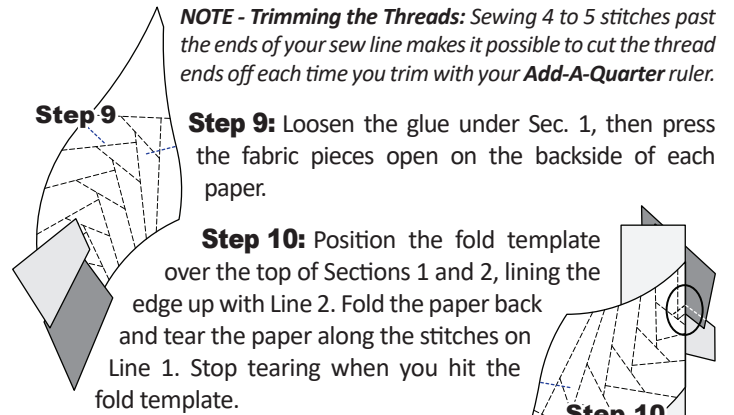
**Step 5:** Place the *Add-A-Quarter* ruler next to the folded back section lip-side down and trim the fabric with your rotary cutter. This leaves a quarter-inch seam allowance which is lined up with the sew side on the next piece of fabric.



**Step 6:** Place the fabric piece for Sec. 2, *right-side up* next to the folded back paper as shown.

**Step 7:** Lift the foundation paper and slide the fabric under Sec. 2. Line the sew-side up with the trimmed seam allowance. Make sure the fabric extends beyond the boundaries of the dashed lines for Sec. 2. Repeat *Steps 3-7* for each foundation paper before moving onto Step 8.

**Step 8:** Sew on Line 1. [The sew lines are the solid lines]The stitches should start and stop about 1/8" past the beginning and the end of each sew line. Complete the sewing on each unit before moving onto the next step.

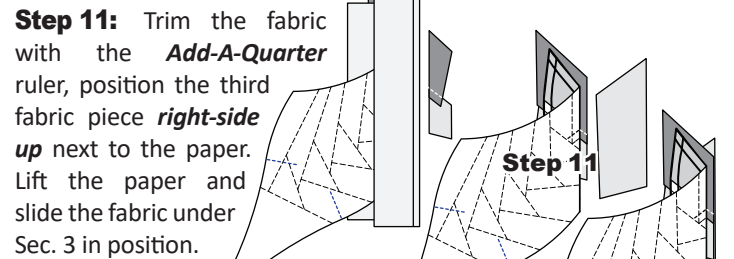


**NOTE - Trimming the Threads:** Sewing 4 to 5 stitches past the ends of your sew line makes it possible to cut the thread ends off each time you trim with your *Add-A-Quarter* ruler.

**Step 9:** Loosen the glue under Sec. 1, then press the fabric pieces open on the backside of each paper.

**Step 10:** Position the fold template over the top of Sections 1 and 2, lining the edge up with Line 2. Fold the paper back and tear the paper along the stitches on Line 1. Stop tearing when you hit the fold template.

**NOTE - Tear Back the Paper:** Tearing the paper along the stitches allows the fabric to relax making it possible to place the *Add-A-Quarter* ruler along the folded edge.



**Step 11:** Trim the fabric with the *Add-A-Quarter* ruler, position the third fabric piece *right-side up* next to the paper. Lift the paper and slide the fabric under Sec. 3 in position.

**Step 12:** Open the paper, and sew on Line 2. Complete the sewing on each Unit before moving onto the next step. Repeat the previous steps as you sew the fabrics for each section onto the foundation paper.

### ► Transition & Registration Points

**Step 1:** After the paper piecing is completed on each unit, the registration lines are sewn on the foundation papers with a basting stitch set at about 2.8. There are four registration line printed on each foundation paper for Unit A. The Registration Lines are identified with the letters (TRP) printed on Sec. 14 and 17 and (2) on Sec. 1. A basting stitch is sewn on each line. The stitching begins along the edge of the paper and stops at the end of the dotted line.

**NOTE - To speed up the sewing process, lift the needle at the end of each dotted line, and move the paper under the presser foot to the next (TRP) line, without cutting the threads begin sewing on the next line.**

**Step 2:** The excess fabric and paper is trimmed off around the perimeter of each unit after the basting stitches are sewn.

**Step 3:** The thread are trimmed off on the printed side of the foundation paper. When trimming the threads on the fabric side, a tail is left measuring about 1/2" long.

**Step 4:** The foundation paper can be removed from the backside of each unit at this time, however it is best to leave the foundation paper attached to your fabric until you are ready to assemble the quilt. Place the pieces back into Bag A1.

**Assembly Instructions:** The assembly instructions are found in Booklet 6.