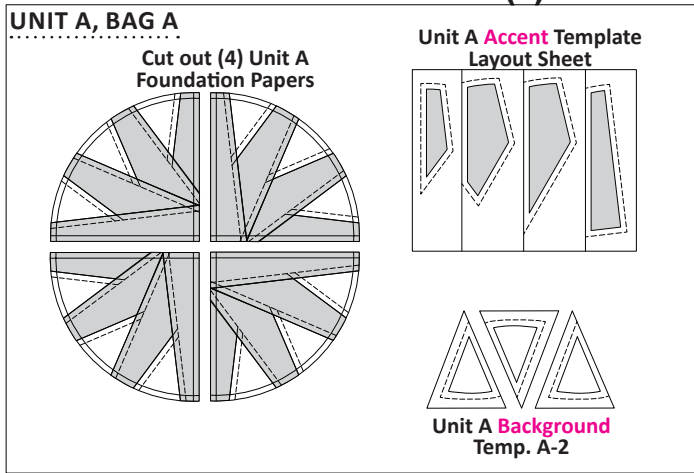


► (1) NP 463



► **Center Circle Fabric Information:**

The table below includes the yardage and fabric references for the Template Layout Sheet and Templates, needed to complete Unit A. This table is your guide for not only selecting your own colors, but keeping you organized. Don't forget to cut a swatch of your chosen fabric to paste in the box in the Assigned Colors column!

Unit A Yardage: Make (4)		
GROUP-A FABRIC #	YARDAGE INCH	ASSIGNED COLOR
Accent Fabric A1 Unit A (TLS)	1/4 yds or (8-1/2")	FABRIC SWATCH
Background Fabric A2: Unit A: Temp A-2	1/4 yd or (4-3/4")	FABRIC SWATCH

► **Group A: Color Layout**

► **Fabric A1: Unit A (Accent TLS)**

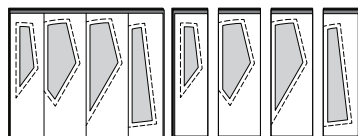
Step 1: Cut (1) 8-1/2" by 42" strip and place on table facing *right-side-up*.



Step 2: The **Unit A Accent Template Layout Sheet** is placed onto the strip as shown. Cut (4) pieces measuring 8-1/2" by 10".



Step 3: The (4) pieces are stacked under the Template Layout Sheet. The cutting is completed by slicing through the paper on each cut line to separate the individual sections. Paper clips are used to keep the fabric and template pieces together. Place these pieces with the Foundation Papers in Bag A.



► **Fabric A2: Background (Temp A-2)**

Step 1: Cut (1) 4-3/4" by 42" strip and place on the table facing *right-side-up*.



Step 2: The **Unit A Background Templates A2** are placed onto the strip as shown. Cut (12) pieces measuring the same size and shape as the Template.

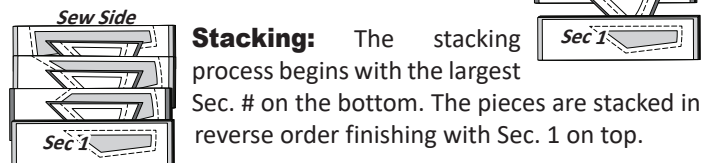


Step 3: Stack into (3) groups of (4) pieces. Paper clip (1) Template to the top of each stack and place these pieces with the Foundation Papers in Bag A.

NOTE - Single Template: The A2 Templates were designed as a single template so the pieces could be cut from multiple fabrics. (1) 4-3/4" strip is required for each fabric you use.

► **STACKING: UNIT A, BAG A**

To prepare your units for chain piecing, position the templates and fabric pieces in numerical order facing *right-side-up*, with the *sew-sides* aligned at the top. Sec. 1 does not have a sew side.

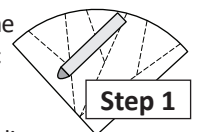


Stacking: The stacking process begins with the largest Sec. # on the bottom. The pieces are stacked in reverse order finishing with Sec. 1 on top.

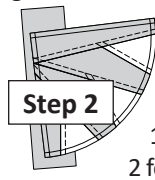
► **FOUNDATION PAPER PIECING: UNIT A**

NOTE - Tracing the Dashed Lines: Place the foundation paper onto a light table. Flip the foundation paper over and trace the dashed lines printed on the front side of the foundation paper, onto the backside of the paper.

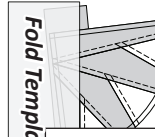
Step 1: Find Sec. 1 on the backside of the foundation paper. Adhere a small amount of fabric glue on the *backside* of the paper under Sec. 1.



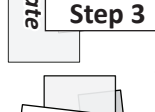
Step 2: Flip the paper over, sliding a Sec. 1 fabric piece beneath the paper with the fabric *wrong-side-up*, under Sec. 1. The glue applied in Step 1 will adhere the fabric to the paper. Repeat Steps 1 and 2 for each unit before moving to Step 3.



NOTE - Fabric Placement: The *wrong-side* of the fabric is against the backside of the paper. The fabric must extend beyond the edges of the dashed lines to cover the underneath side of Sec. 1.



Step 3: Place the fold template over the top of Sec. 1. Line the edge up with the solid black line marked Line 1.



Step 4: Fold the paper back over the top of the fold template.

Step 5: Place the **Add-A-Quarter** ruler next to the folded back section lip-side down and trim the fabric with your rotary cutter. This leaves a quarter-inch seam allowance which is lined up with the sew side on the next piece of fabric.

