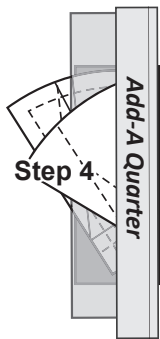
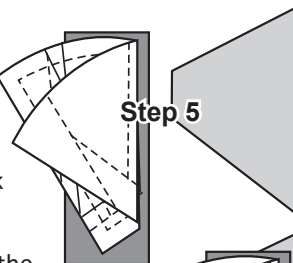


Step 4: Place the *Add-A-Quarter* ruler next to the folded edge on the paper, lip-side down, and trim a quarter-inch seam.



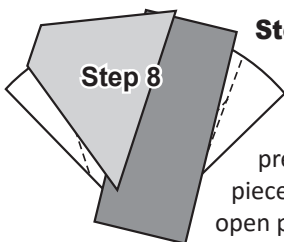
Step 5: Place the second piece of fabric for Sec. 2 *right-side-up* next to the folded back paper as shown.



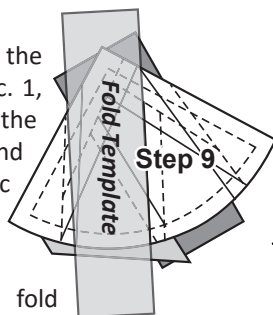
Step 6: Lift the foundation paper and slide the second fabric piece under Sec. 2. Line the edge of the second fabric up with the trimmed quarter-inch seam.



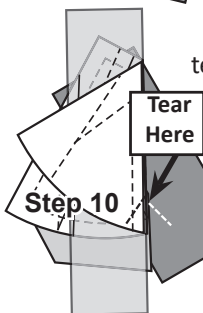
Step 7: Lift both pieces to your machine with the paper. Open the paper and sew on Line 1. Start at the top of Line 1 and sew to the bottom of Line 1, just beyond the dashed line. (No Graphic Included).



Step 8: Loosen the glue under Sec. 1, then flip the paper over and press the fabric pieces to the open position.

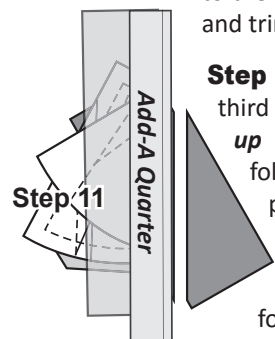


Step 9: Place the fold template over the top of Sec. 1 and 2, lining up the edge on Line 2.

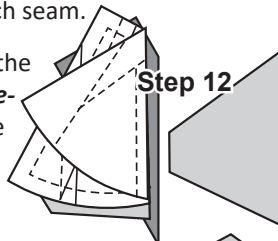


Step 10: Tear the paper on the stitch line, back to the fold template. This allows the fabric to lay flat, making it easier to trim with the *Add-A-Quarter* ruler.

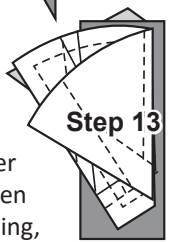
Step 11: Place the *Add-A-Quarter* ruler next to the folded edge on the paper, lip-side down, and trim a quarter-inch seam.



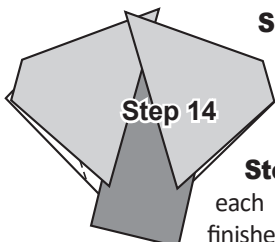
Step 12: Place the third piece *right-side-up* next to the folded back paper as shown.



Step 13: Lift the foundation paper and slide the fabric under Sec. 3.

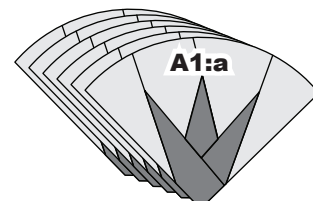
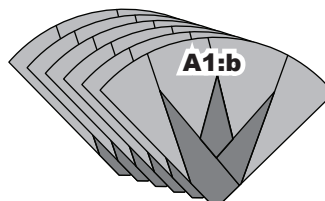


Step 14: Open the paper and sew on Line 2. When you are finished sewing, press the fabric open.



Step 15: Continue adding the pieces for each section. When the foundation piecing is finished the excess fabric and foundation paper is trimmed off each foundation unit. The trim line is the solid black line located around the perimeter of each unit.

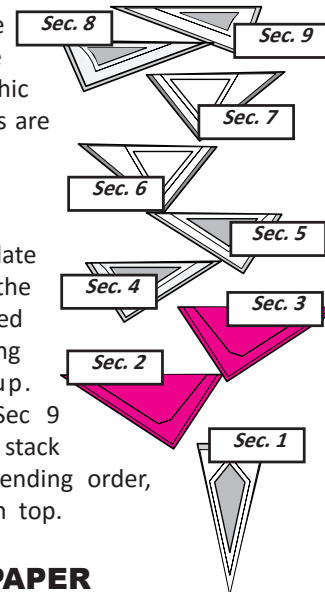
Step 16: You should have (6) each of your background fabrics. The color of your spikes will depend on the Color Option you chose in the cutting instruction.



NOTE - Foundation Paper: Do not remove the foundation paper because it acts as a stabilizer during curved piecing.

UNIT A2, STACKING: BAG #2

Remove the fabrics and template pieces from Bag #2. Line the pieces up, as shown in the graphic to the right. Make sure the stacks are facing *right-side-up*.



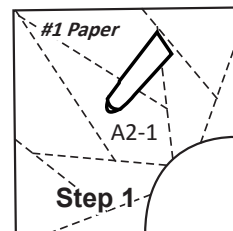
Stacking Sew Side



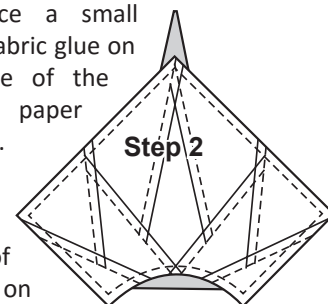
Stack the template pieces with the sew-sides aligned at the top, facing right-sides-up. Starting with Sec 9 on the bottom, stack the pieces in descending order, finishing with A2-1 on top.

FOUNDATION PAPER PIECING, UNIT A2 (12) BAG #2

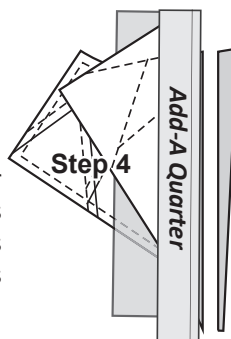
NOTE - Tracing the Dashed Lines: Trace the backside of your first piece of foundation paper. Number your papers 1-12.



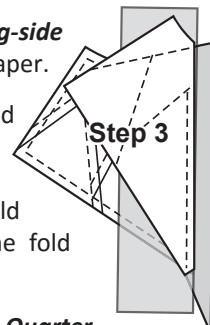
Step 1: Place a small amount of fabric glue on the backside of the foundation paper under Sec. 1.



Step 2: Position the first piece of fabric in your stack *wrong-side-up* on your table. Lift the #1 foundation paper and slide the fabric under Sec. 1. The *wrong-side* of the fabric is glued to the backside of the paper.



Step 3: Place the fold template over the top of Sec. 1, lining the edge up to Line 1. Fold the paper back over the fold template.



Step 4: Place the *Add-A-Quarter* ruler next to the folded edge on the paper, lip-side down, and trim a quarter-inch seam.