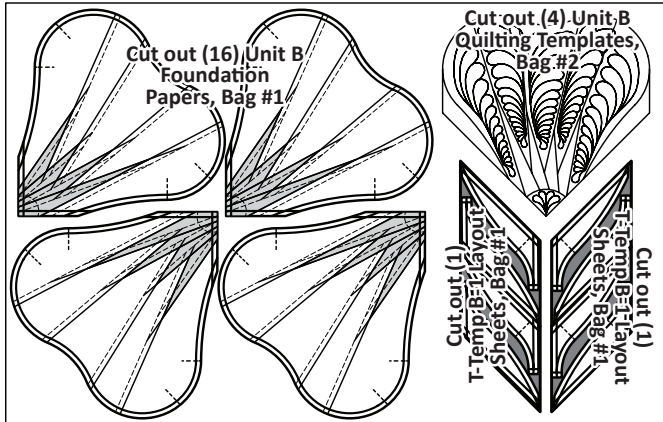


GROUP A, UNIT B

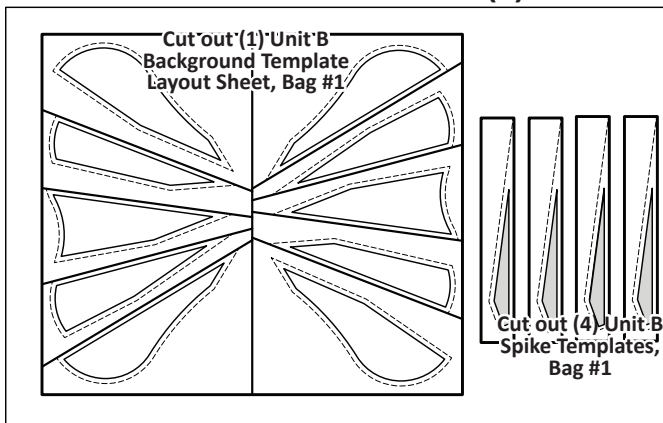
► Foundation Papers and Templates:

Step 1: You need (2) Ziploc Bags for Group A. Cut out (16) Unit B Foundation Papers [NP 423], along with the Templates and Template Layout Sheets [TP 244]. Cut out (4) Quilting Templates [NP 423] as well. See the newsprint graphics below for information on how to organize your units and templates into bags. *Refer back to General Information for Foundation papers and templates for additional instructions on how to prepare your foundation papers and templates.

► (4) NP 423



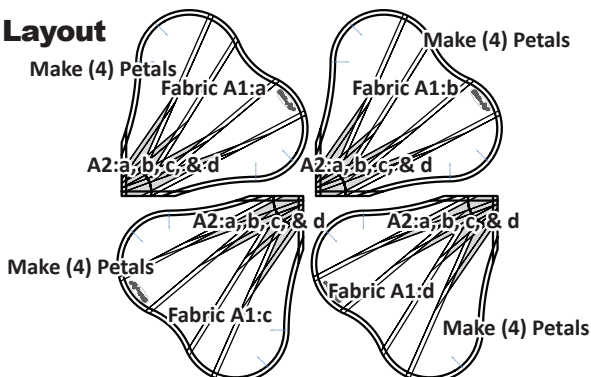
► (1) TP 244



► Dogwood Petal Fabric Information:

The Unit Chart at the top of the next page includes yardage, fabric references, and which fabrics should go with which cutting templates to complete Unit B. This table is your guide for not only selecting your own colors, but keeping you organized. Don't forget to cut a swatch of your chosen fabric to paste in the box in the Assigned Colors column!

► Color Layout

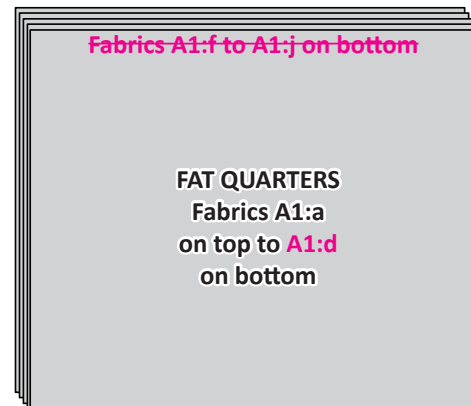


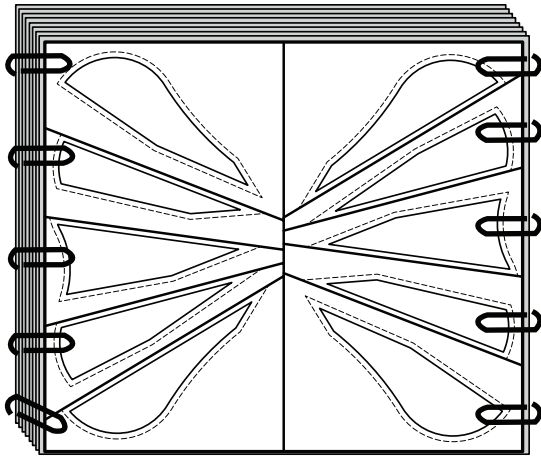
Unit B Yardage: Make (16) Total

GROUP-A FABRIC #	YARDAGE (OR) STRIP SIZE	ASSIGNED COLOR
<u>COLORWAY 1 (Make 2 Flowers or 8 Petals)</u>		
<u>Background Fabric A1:a, Unit B Background (TLS)</u>	<u>2 Fat Quarters (or) 18" x 42" Strip</u>	FABRIC SWATCH
<u>Background Fabric A1:b, Unit B Background (TLS)</u>	<u>2 Fat Quarters (or) 18" x 42" Strip</u>	FABRIC SWATCH
<u>COLORWAY 2 (Make 2 Flowers or 8 Petals)</u>		
<u>Background Fabric A1:c, Unit B Background (TLS)</u>	<u>2 Fat Quarters (or) 18" x 42" Strip</u>	FABRIC SWATCH
<u>Background Fabric A1:d, Unit B Background (TLS)</u>	<u>2 Fat Quarters (or) 18" x 42" Strip</u>	FABRIC SWATCH
<u>Spikes and Black Background (Make 4 Flowers or 16 Petals)</u>		
<u>Accent Fabric A2:a, Unit B Spike Template</u>	<u>3/8 yd (or) 10-1/2" x 42" Strip</u>	FABRIC SWATCH
<u>Accent Fabric A2:b, Unit B Spike Template</u>	<u>3/8 yd (or) 10-1/2" x 42" Strip</u>	FABRIC SWATCH
<u>Accent Fabric A2:c, Unit B Spike Template</u>	<u>3/8 yd (or) 10-1/2" x 42" Strip</u>	FABRIC SWATCH
<u>Accent Fabric A2:d, Unit B Spike Template</u>	<u>3/8 yd (or) 10-1/2" x 42" Strip</u>	FABRIC SWATCH
<u>Accent Fabric A3, Template B-1 & B-2</u>	<u>1/4 yd (or) 8-1/2" x 42" Strip</u>	FABRIC SWATCH

► Fabrics A1:a to A1:d: Unit B Background TLS, Fat Quarter Option

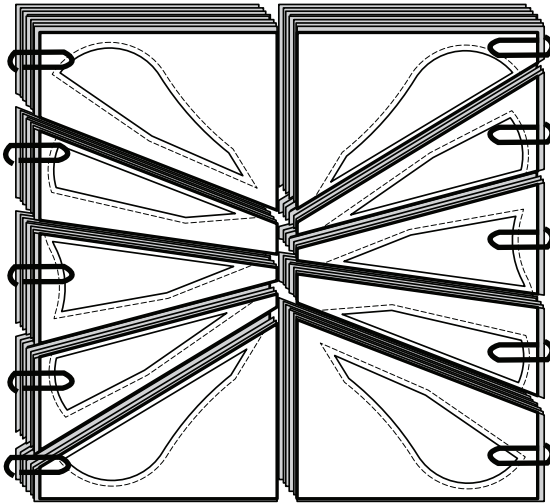
Step 1: Stack the (8) fat quarters (18" x 21"), facing *right-side-up* in order with (2) A1:d on the bottom, and (2) A1:a on the top.





Step 2: The *Unit A Background Template Layout Sheet* is placed onto the strips as shown. Place paper clips around the outside edge, making sure there is one clip on each Section of the TLS.

Step 3: Cut the TLS and the fabrics beneath apart, on the cut lines, in order until you have cut the entire stack apart.

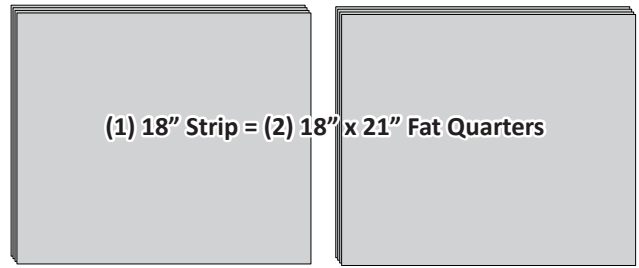


Step 4: Place the clipped stacks back into Bag #1.

► **Fabrics A1:a to A1:d: Unit B Background TLS, Yardage Option**

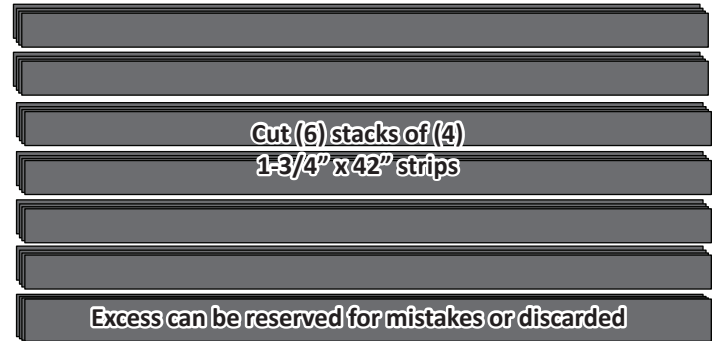
Step 1: If you are using 1/2 Yard cuts of Fabrics A1:a to A1:d, simply stack the fabrics facing *right-side-up* and sub-cut the stack into (2) stacks of 18" x 21" strips. Then, return to the Fat Quarter instructions above and complete the cutting as directed.

1/2 Yard Cuts can also be used. Simply cut them in half (shown in graphic at top of next page), into (2) 18" x 21" Fat Quarters.

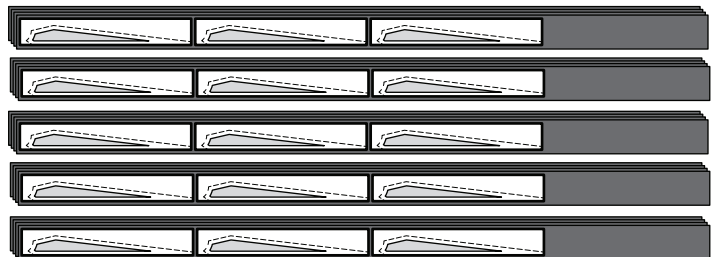


► **Fabrics A2:a to A2:d: Unit B Accent Spike Template**

Step 1: Stack the (4) 10-1/2" x 42" strips facing *right-side-up* in order with A2:d on the bottom, and A2:a on the top. Sub-cut the strip stack into (6) stacks of 1-3/4" x 42" strips.

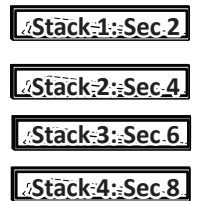


Step 2: Remove the *Unit B Spike Templates* from Bag #1. Use these as a guide to cut, (3) stacks of 1-3/4" x 11" strips from each of the (6) strip stacks.



Step 3: Re-sort the pieces into (4) stacks of (16), by color:

- STACK 1: Section 2: (16) A2:a
- STACK 2: Section 4: (16) A2:b
- STACK 3: Section 6: (16) A2:c
- STACK 4: Section 8: (16) A2:d



Step 4: Clip (1) *Spike Template* onto each stack. Check the labeling on your *Spike Template*. Place the proper Template on the proper Stack (1 to 4).

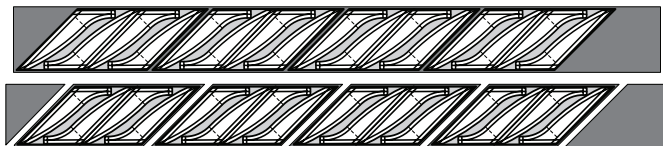
Step 5: Place the stacks into Bag #1.

► **Fabrics A3: Template B-1 and Template B-2 Layout Sheets**

Step 1: There is (1) 8-1/2" x 42" strip cut from Fabric A3. Subcut (2) 4-1/4" x 42" strips from the fabric.



Step 2: Place (1) 4-1/4" x 42" strip *right-side-up*. Lay the (4) *T-Template B-1 Layout Sheets* on top and cut around each of the parallelograms the size of the sheet.



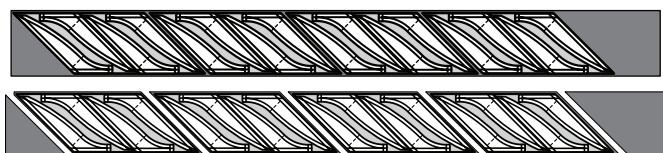
Step 3: Take the parallelograms to your sewing machine with the Template Layout Sheets, and one and a time, use your machine to sew a basting stitch (stitch length 2.8 or more) on all of the dotted lines labeled as Transition Point or (RP) (Depending on your printing, these lines may be labeled as either). These are Registration Lines (or marking lines) that can be used to easily match up *T-Template B-1 and B-2* to the Unit B papers later. They also mark the points where you should stop sewing and change your sewing direction when completing the S-Curves.

Step 4: When you have basted on the dotted lines, then cut each Layout Sheet apart on the Cut Lines. Do this one Layout sheet at a time and note that several of the lines are not straight, but mark the EXACT shape of the Template. Use a rotary cutter to slowly trim away the paper and fabric without damaging the shape of each T-Template.



Step 5: Stack the parallelograms *right-side-up* into one stack and place the *T-Template B-1 Layout Sheet* on top. Cut apart the sheet on the Cut Lines. Some of the Cut Lines are not straight on this layout sheet, so be careful when you cut them to stay on the line around the curved areas. It might help to place a paper clip on each section before you cut the curved lines. The hatched areas that are cut away can be discarded. Place the clipped stacks back into Bag #1.

Step 6: The same process is repeated with the other 4-1/4" x 42" strip and the *Template B-2 Layout Sheet*. Place the clipped stacks back into Bag #1.

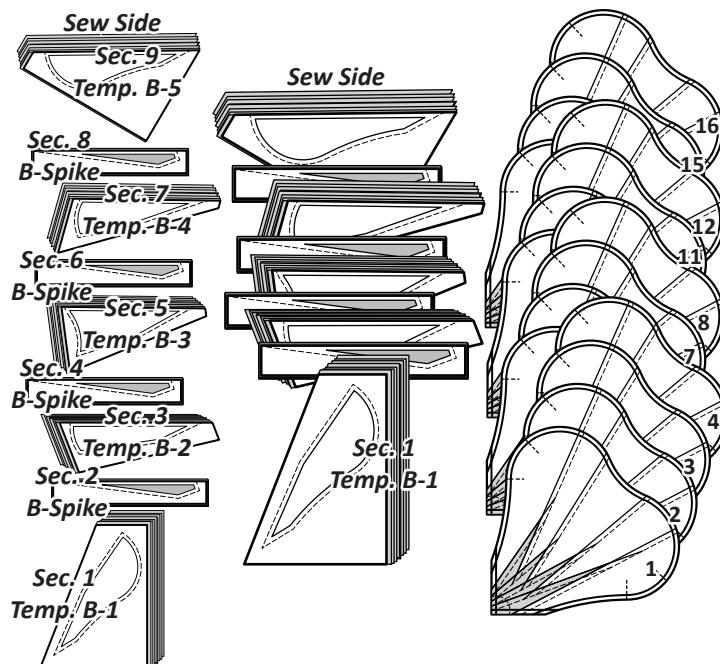


SORTING AND STACKING: UNIT B

Before the paper piecing begins, sort and stack the templates and fabric pieces and label the foundation papers. Start by matching the templates and fabric pieces in Bag #1 up with the Sec. #s on the foundation papers.

Sorting: Sort the pieces in numerical order on your table with the templates and fabric pieces facing right-side-up for each section. (Graphic at top of next column).

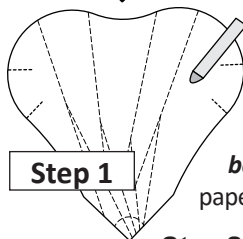
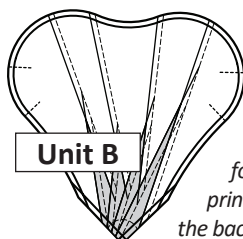
Stacking: The pieces are then stacked in the sewing order with the sew sides aligned at the top. Sec. 1 does not have a sew side. The stacking process begins with largest section number on the bottom. The pieces are then stacked in reverse order finishing with Sec. 1 on top as shown in the middle graphic in the next column.



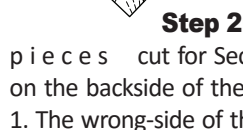
Labeling and Swatch Marking Your Papers: Before you begin paper piecing, it is a good idea to number your foundation papers as 1 to 16 as noted in the Chain Piecing example. Numbering the papers (front-side and backside under Sec. 9), then putting them back in order before you add each new piece will help assure you are always sewing the proper fabric to the unit you are working with. For the Dogwood pattern, it will be extra helpful to cut a small scrap from the leftover fabric for each background and paste that into Sec. 9 as well. This way, you have a visual reminder of which background you should be picking up. See the graphic above.

FOUNDATION PAPER PIECING: UNIT B

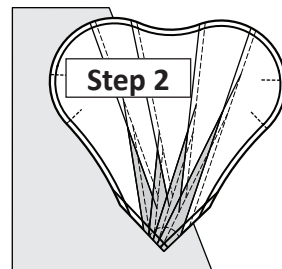
NOTE - Tracing the Dashed Lines: Place the foundation paper onto a light table. Flip the foundation paper over and trace the dashed lines printed on the front side of the foundation paper, onto the backside of the paper.



Step 1: Find Sec. 1 on the backside of the foundation paper. Adhere a small amount of fabric glue on the *backside* of the paper under Sec. 1.



Step 2: The fabric pieces cut for Sec. 1 are centered on the backside of the paper over Sec. 1. The wrong-side of the fabric is glued to the backside of the paper leaving the right-side facing up. Glue is used to adhere the fabric to the paper. Repeat Steps 1 and 2 for each foundation unit before you complete Step 3.



NOTE - Fabric Placement: The wrong-side of the fabric is against the backside of the paper. The fabric must extend beyond the edges of the dashed lines to cover the underneath side of Sec. 1.