

CHAPTER 3: ASSEMBLY OF THE GRANDMA'S WEDDING RING QUILT

Quilt Assembly generally involves the following steps:

1. Sew Unit A (Bag #1) to the Melons (Bag #3), removing the papers from Unit A before you sew. Make **(71)** Units.
2. Sew the Unit B (Bag #2) to the Center Template 1 (Bag #4). Leave the papers on Unit B. Make **(71)** Units.
3. Add the Corner Squares to each Unit B/Center Template 1 and Unit A/Melon along the edges (creates Assembly Groups 1, 2, 3, and 4) using the paper as a guide. Then, remove the papers from Unit B.
4. Sew the Unit A/Melons to the Unit C/Centers.
5. Sew the quilt together in horizontal rows.
6. Sew the horizontal rows together to complete the quilt.

The assembly instructions below will provide more detail for the above seven assembly steps, including pressing directions and detailed graphics.

GENERAL TIP FOR REMOVING THE PAPER

Foundation Paper: You may be tempted to remove all of the foundation paper from the backside of each unit once the units are completed, but in some cases it is best not to remove the paper. The foundation paper serves as a stabilizer in the process of sewing the units together and should not be removed until instructed to do so. I have outlined which sections on each unit should have the papers removed and which ones should have the paper left attached to assist in the quilt assembly process of, 'Building the Blocks'. If you follow these recommendations, as you build the units it will improve your accuracy and will minimize the overall time you spend piecing the quilt together.

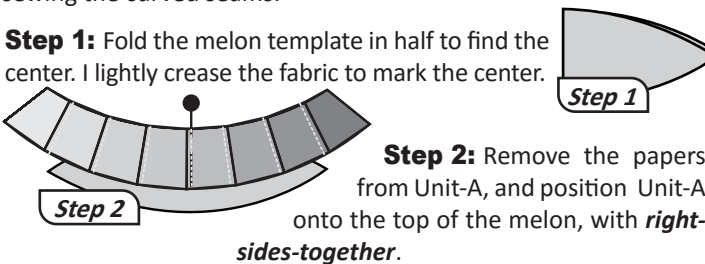
When Removing the Paper: Place your finger at the end of each seam. Pinch the fabric and paper at the beginning of your stitches. Pull back on the paper and begin tearing the paper away from the fabric. Start with the last piece sewn onto the foundation paper and remove the paper in descending order finishing with the first piece.

PART 1: CURVED PIECING, UNIT-A AND MELON TEMPLATE 2

Quarter-Inch Seams: Sewing a quarter-inch seam allowance is very important when sewing the curved seams. If your seam allowances are not accurate, you will notice some distortion in the sizes of your blocks as you sew the units together. Sewing with a quarter-inch foot will make this job a lot easier.

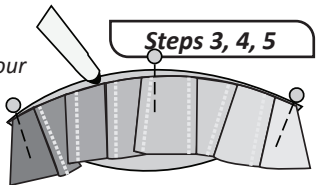
Glue Pen: I use a fabric glue pen to secure the raw edges of the curved seams together before sewing the *quarter-inch* seams. This prevents stretching the fabric along the bias edge while sewing the curved seams.

Step 1: Fold the melon template in half to find the center. I lightly crease the fabric to mark the center.



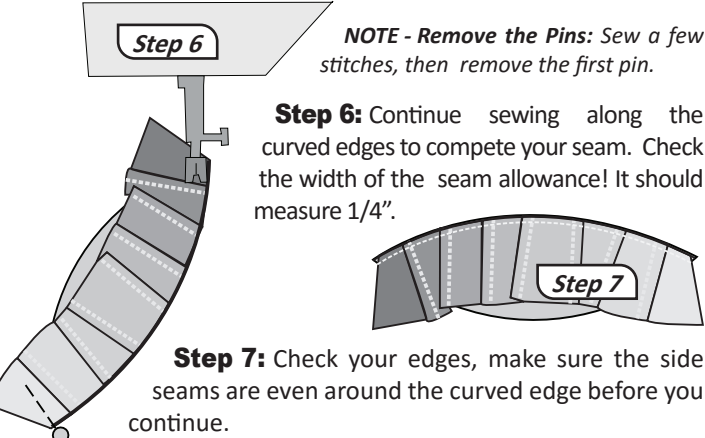
Step 3: Match and pin the centers together on both pieces. Then match the ends on both pieces and secure with two additional pins or a touch of glue.

NOTE - Smart Corners: If you trimmed your smart corners provided on the paper templates for your Melons you will have a perfect match at both end. If you chose not to trim the smart corners you will have dog ears on showing at both ends of the melon.



Step 4: Using a glue pen, dab a small amount of glue along the raw edge of the melon piece. Quickly shape, and match the edges of both pieces together.

Step 5: Position the pieces at your machine with *Unit-A* on top, next to the pressor foot. This leaves the melon on the bottom next to the feed dogs.

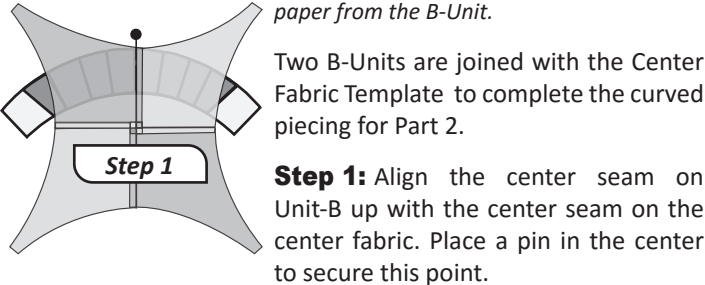


Pressing Direction

The curved seams are pressed facing in towards the Unit-A arcs. The pressing is very important! A little steam and a little spray starch will help keep the seams from changing directions once it is pressed.

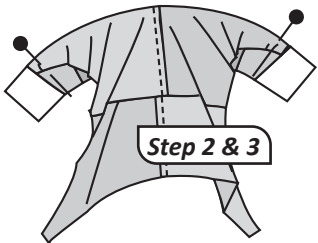
PART 2: CURVED PIECING, UNIT-B AND CENTER TEMPLATE 1

NOTE - Foundation Paper Stays On!: Do not remove the foundation paper from the B-Unit.



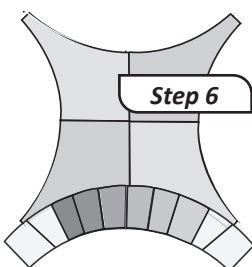
Step 2: Pin both ends together with one pin on each side.

Step 3: Gather the fabric in your hand across the middle of the center piece. This will force the inner curve to fan open and match along the outer edge of the curve on the B-Unit.



Step 4: Using a glue pen, dab a small amount of glue along the raw edge of Unit-B. Quickly shape, and match the edges of both pieces together.

Step 5: Position the pieces at your machine with the center section on top, next to the presser foot. This leaves Unit-B on the bottom next to the feed dogs.



Step 6: The pieces are sewn together.

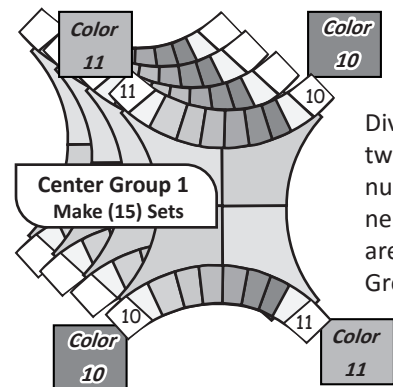
Step 7: Another Unit-B is sewn on the opposite side of the center section.

Step 8: Press the Unit-B arc toward the center section.

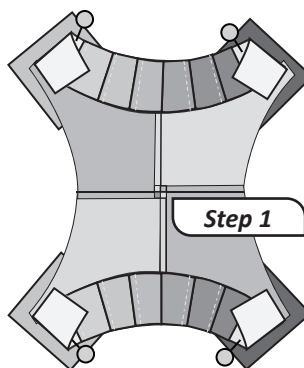
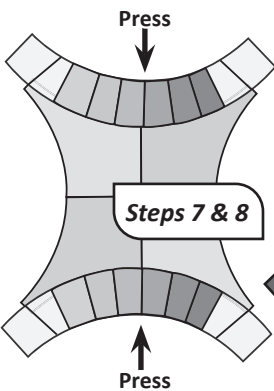
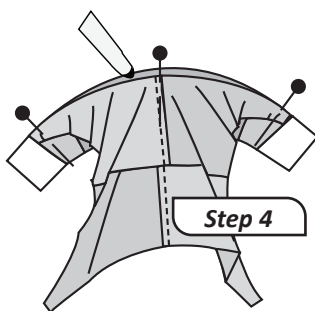
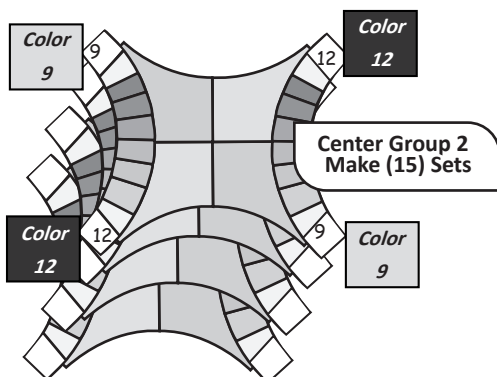
NOTE - Left Overs! You should have (11) single B-Units left over. These are used to finish the scalloped edge pieces.

FINISHING THE CORNER SECTIONS (ASSEMBLY OF GROUPS 1 AND 2)

To keep you organized, we have labeled the pieces you assemble into groups, referred to as Groups 1 to 4. This section references the process for constructing Center Group 1 and Center Group 2. Constructing these groups involves adding corner squares to the Center/Unit B pieces. Graphics below show you which for which corner square colors go where, and how many of each Group you should make. The graphics show the front side of the unit.



Divide the Center/B-Units into two groups. Write the color numbers on each of the corner section. The corner colors are different for Group 1 and Group 2.

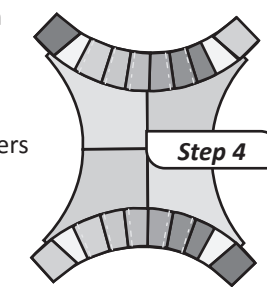
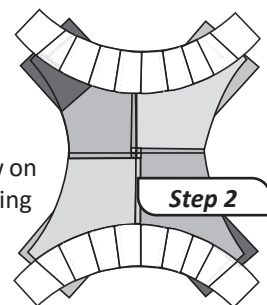
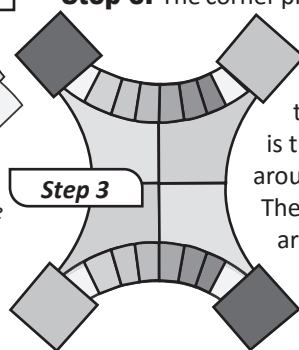


Step 1: The corner pieces from Bag #2 are sewn under Sections 9 and 10. Fold back the foundation papers on Lines 8 and 9. Position the corner pieces under the folded back corner sections on each piece. A pin is used to pin the fabrics in place.

Step 2: Fold open the papers and sew on the lines to complete the paper piecing for the corners.

Step 3: The corner pieces are pressed open.

Step 4: Then the excess fabric is trimmed off around each corner. The foundation papers are removed from each B-Unit.



Step 5: Use these general steps to complete the Group 1 and Group 2 Center/Unit B blocks.

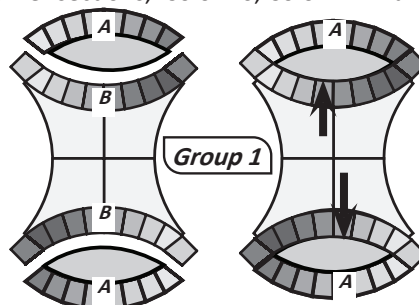
Step 6: When each of the Groups have been completed, it is best to place the Groups onto a design wall as illustrated in Illustration 1 on Page 12. Note that Group 1 is placed so the Unit B pieces run vertical and Group 2 is placed so the Unit B pieces run horizontal.

Step 7: To complete Groups 1 and 2, the Unit A Melon pieces should be sewn to Unit B. The graphics that follow will show what Groups 1 and 2 look like when they are complete. And, use the Illustrations on Page 12 and 13 to place the pieces back on a design wall. It may even be helpful to label these Groups with a small sticky note so they are placed back on the design wall in the proper position. To join the units, reference the Joining the Units graphic at the top right of Page 11.

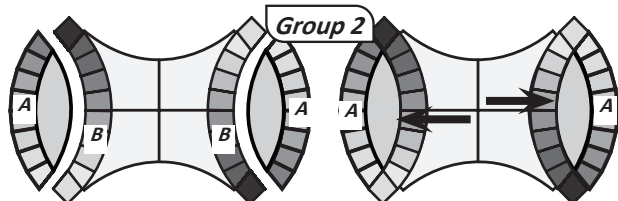
Group 1, G-1: Vertical Setting, Illustration 1 & 2, Pages 12 & 13

The joining seam is pressed facing towards the Melon/Unit-A.

Corner sections, Color 10, Color 11. Make (15).

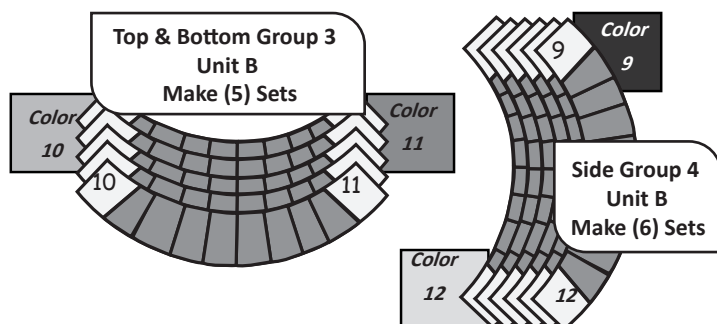


Group 2, G-2: Horizontal Setting, Illustration 1 & 2, Page 12 & 13
 The joining seam is pressed facing towards the Melon/Unit-A.
 Corner sections, Color 9, Color 12. Make (15).

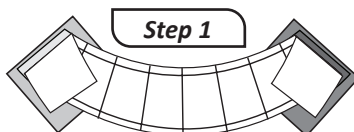


SCALLOPED EDGE PIECES (ASSEMBLY OF GROUPS 3 & 4)

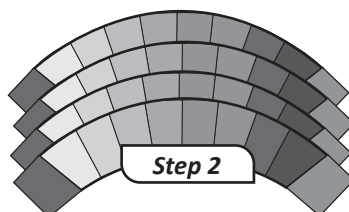
The following instructions explain how to construct Groups 3 and 4, which are the Melon/Arc pieces that are placed around the outside of the melons.



Step 1: The corner fabrics are sewn under the folded back corner sections to complete the paper piecing on both Groups 3 and 4.



Step 2: The corner pieces are pressed and trimmed around each corner.



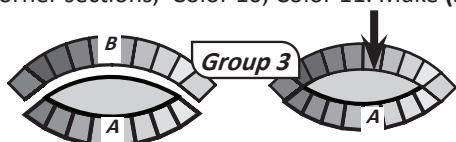
Step 3: Remove the foundation papers from the B-Units in Group 3 and 4. Take care to note where these units go (top/bottom or Side) around the scalloped edge to make sure the corner square 4 patches are completed properly.

Step 4: With the B-Units complete and the papers removed, it is now time to sew these pieces to the Unit A/Melon pieces. The graphics that follow show what Group 3 and Group 4 look like when complete. The placement of each of these groups around the perimeter of the quilt is shown in Illustrations 1 and 2 on Page 12 and 13. To join the units, reference the Joining the Units graphic to the right.

Group 3, G-3: Top/Bottom, Illustration 1 & 2, Pages 12 & 13

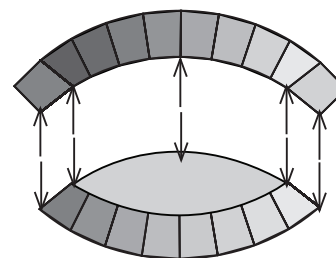
The joining seam is pressed facing towards the Melon/Unit-A.

Corner sections, Color 10, Color 11. Make (5).



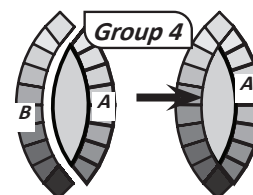
Joining the Units

The A & B-Units are pinned and sewn together to complete Groups 1 to 4. The general process of joining these units across the quilt is shown below.



Before you begin the curved piecing, match and pin the pieces as shown above in the graphic using (5) pins, (1) in the center, (1) at each intersection where the A & B-Units meet and (1) at each end.

Group 4, G-4: Sides, Illustration 1 & 2, Pages 12 & 13
 The joining seam is pressed facing towards the Melon/Unit-A.
 Corner sections, Color 9, Color 12. Make (6).



► Illustration #2

