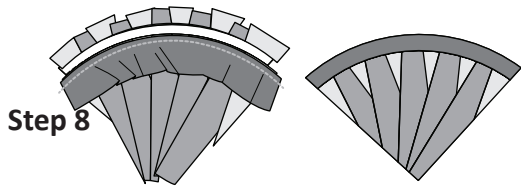


**Step 6:** After the edges are secure, the pieces are sewn together. The paper is placed next to the feed dogs and a quarter-inch stitch line is sewn 1/4" in from the edge of the basting stitch.

**Step 7:** The fabric pieces, cut from Temp A3, are now pressed on the front side of the paper. The foundation paper is flipped over and the excess fabric is trimmed off around the perimeter of Unit A, following the solid line along the outside edge of each unit. Free motion trimming will be required around the curved edges.



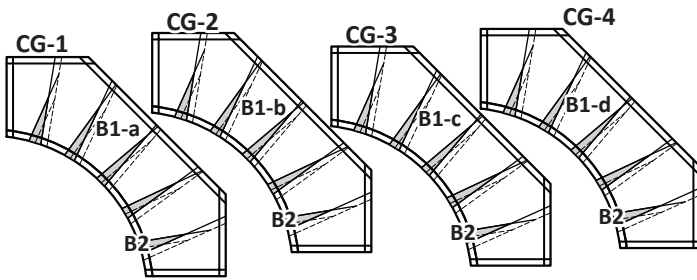
**Step 8:** After the trimming is completed in Step 7 the arc fabric cut from Temp A3 is folded back and the excess fabric under the arc is trimmed away on the basting line. Caution! Do not cut off the arc that you just sewed in place. Place the pieces back into Bag #1 and continue with the remaining units.



**NOTE - Do not remove the foundation papers on Unit A at this time.**

### **SORTING YOUR FABRICS: BAG #2 UNIT B**

Make (12) units with each of the (4) color combinations. The fabric pieces for each color group (CG) are clipped to the foundation papers.



#### **► Stacking: Unit B**

Position the templates and fabric pieces in each color group facing *right-side-up*, with the *sew-sides* aligned at the top.

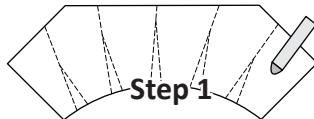
**Stacking:** The stacking process begins with Sec.. 11 on the bottom, stacked in reverse order finishing with Sec. 1 on top.



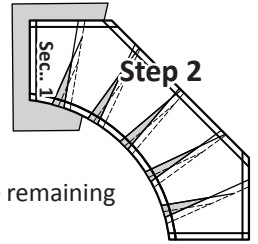
#### **► Foundation Paper Piecing**

**NOTE - Tracing the Dashed Lines:** Flip the foundation paper over and trace the dashed lines on the backside of your first unit.

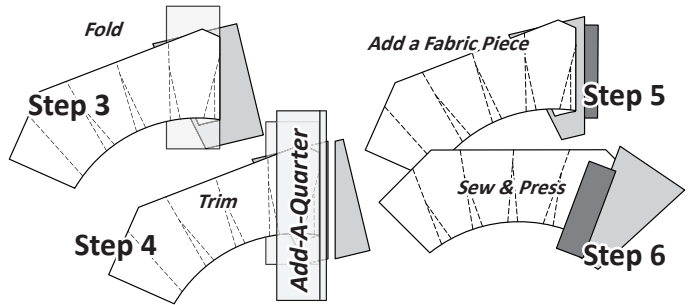
**Step 1:** Find Sec. 1 on the foundation paper. Place a small amount of fabric glue on the **backside** of the paper under Sec. 1.



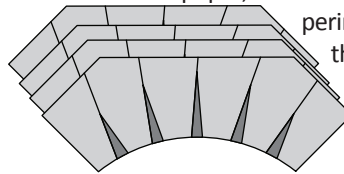
**Step 2:** Position the first piece of fabric for Sec. 1 *wrong-side-up* on your table. Lift the foundation paper, slide the fabric under Sec.. 1 and glue the fabric to the backside of the paper.



Continue with the process to complete the remaining sections on each unit.



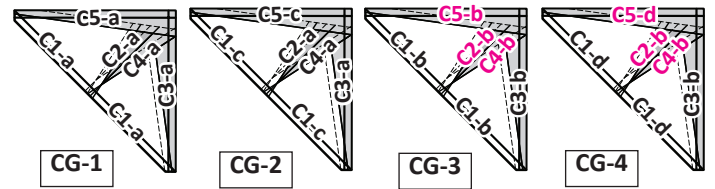
When the paper piecing is complete, press the fabrics on the backside of the paper, then trim off the excess fabric following the perimeter of the dark line printed along the edge of the foundation paper. Place the pieces back into Bag #2.



**NOTE - The foundation papers are not removed on Unit B at this time.**

### **SORTING YOUR FABRICS: BAG #3 UNIT C**

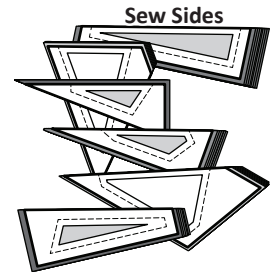
Make (20) units with each of the (4) color combinations. The fabric pieces for each color group are clipped to the foundation papers.



#### **► Stacking: Unit C**

Position the templates and fabric pieces in each color group facing *right-side-up*, with the *sew-sides* aligned at the top. Sec. 1 does not have a sew side.

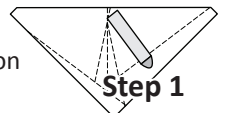
**Stacking:** The stacking process begins with Sec.. 6 on the bottom, stacked in reverse order, finishing with Sec.. 1 on top.



#### **► Foundation Paper Piecing**

**NOTE - Trace the dashed lines on the backside of your first unit.**

**Step 1:** Find Sec.. 1 on the foundation paper. Place a small amount of fabric glue on the **backside** of the paper under Sec.. 1.



**Step 2:** Position the first piece of fabric for Sec.. 1 *wrong-side-up* on your table. Lift the foundation paper, slide the fabric under Sec.. 1 and glue the fabric to the backside of the paper.