

# FOUNDATION PAPER PIECING BAG #1: UNIT AR:

**Step 1:** Place Unit AR *right-side-up* on your table and position as shown.

**NOTE - Tracing the Dashed Lines:** Place the foundation paper onto a light table. Flip the foundation paper over and trace the dashed lines printed on the front side of the foundation paper, onto the backside of the paper. Don't be afraid to spend the time tracing. These lines are helpful when placing each fabric piece under the foundation papers.

**Step 2:** Find Sec. 1 on the foundation paper. Place a small amount of fabric glue on the backside of the paper under Sec. 1.

**Step 3:** Position the first piece of fabric for Sec. 1 *wrong-side-up* on your table. Lift the foundation paper, slide the fabric under Sec. 1 and glue the first piece of fabric to the *backside* of the paper. Note the *wrong-side* of the fabric is against the *backside* of the paper. The fabric must extend beyond the edges of the dashed lines to cover the underneath side of Sec. 1.

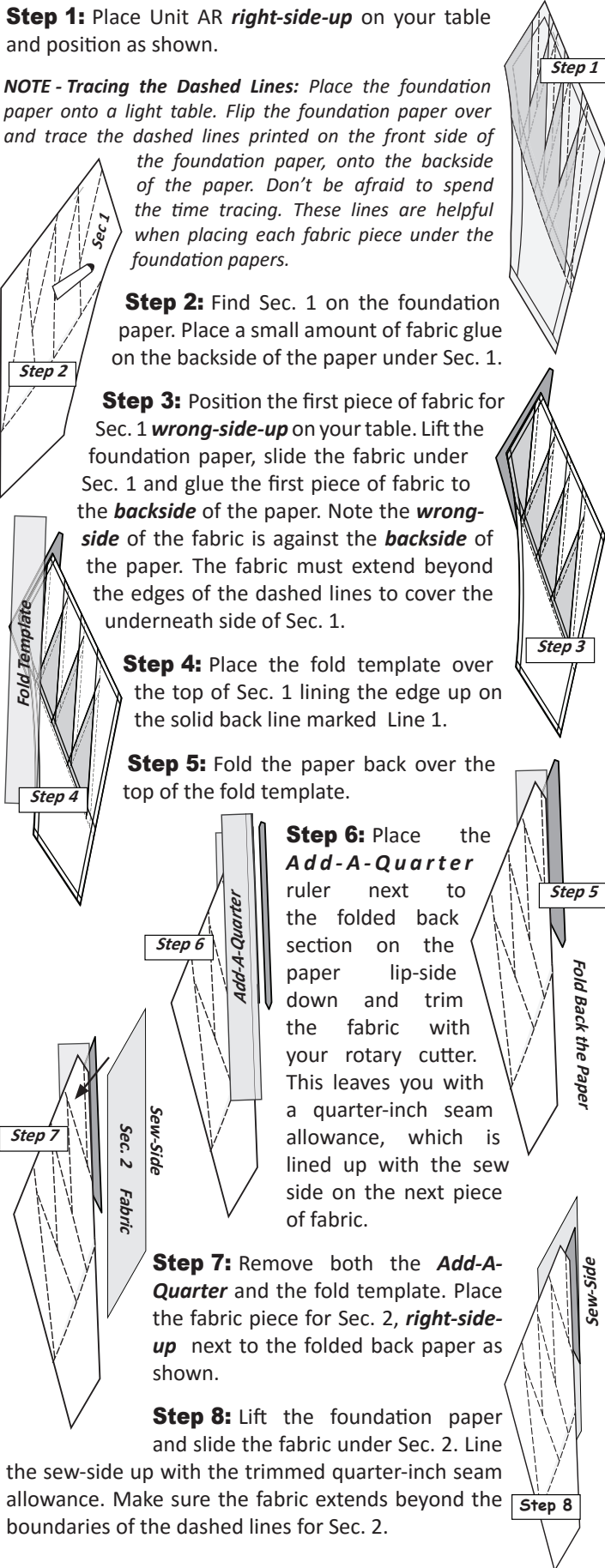
**Step 4:** Place the fold template over the top of Sec. 1 lining the edge up on the solid back line marked Line 1.

**Step 5:** Fold the paper back over the top of the fold template.

**Step 6:** Place the **Add-A-Quarter** ruler next to the folded back section on the paper lip-side down and trim the fabric with your rotary cutter. This leaves you with a quarter-inch seam allowance, which is lined up with the sew side on the next piece of fabric.

**Step 7:** Remove both the **Add-A-Quarter** and the fold template. Place the fabric piece for Sec. 2, *right-side-up* next to the folded back paper as shown.

**Step 8:** Lift the foundation paper and slide the fabric under Sec. 2. Line the sew-side up with the trimmed quarter-inch seam allowance. Make sure the fabric extends beyond the boundaries of the dashed lines for Sec. 2.



**Step 9:** Open the paper and sew on Line 1. The stitches should start and stop about 1/8" past the beginning and the end of each stitch line.

**NOTE - Thread Management:** Sewing past the ends of your sew line makes it possible to cut the thread ends off each time you trim with your **Add-A-Quarter** ruler.

**NOTE - Glue Management:** Loosen the glue under Sec. 1. This should be done before you press.

**Step 10:** Flip the paper over and press the fabric pieces to the open position on the *right-side* of the fabric. Don't press any folds into the seam lines.

**Step 11:** Place the fold template over the top of Sections 1 & 2 lining up the edge with Line 2.

Fold the paper back over the fold template and tear the paper along the stitch line stopping once you hit the fold template. This allows the fabric to lay flat against the table making it possible to trim with the **Add-A-Quarter** ruler.

**NOTE - Tearing the Paper Back:** You will need to reposition your hand to hold the paper firm as you tear the paper from the stitches.

**Step 12:** Trim the fabric with the **Add-A-Quarter** ruler.

**Step 13:** Position the third fabric piece next to Sec. 3.

**Step 14:** Slide the fabric under Sec. 3. Line the sew-side up with the raw edge of the trimmed quarter-inch seams allowance.

**Step 15:** Tear the paper back on the stitch line at the top of Line 2, then continue the step for adding Sec.'s 4, 5, 6, 7, and 8.

**Step 16:** The fabric for Sec. 9 is attached to the paper by sewing a curved seam on Line 8. You will need to tear back the paper 1/8" along each of the over sewn stitch line on Line 8.

**Step 17:** A special technique is used to accomplish trimming your quarter-inch seam on a curved edge, where an **Add-A-Quarter** ruler cannot be used.

**17A:** At your machine, pull the top thread out of the needle and tension bar.

