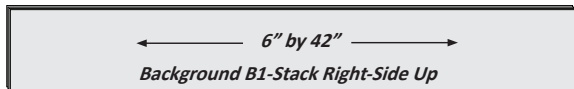
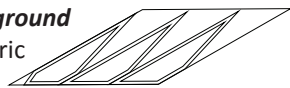


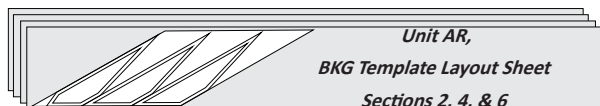
Step 7: Clip the template and fabric pieces together, place back into Bag #1 with the foundation papers for Unit-AR.

► Unit AR: Background Template Layout Sheet, Bag #1 Sections 2, 4, & 6

Step 1: Remove the *Unit-AR Background Template Layout Sheet* and the (4) fabric strips cut from Color B1 in Bag #1.



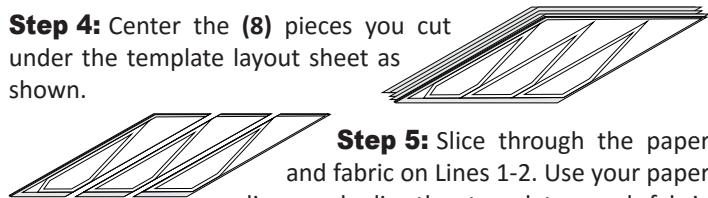
Step 2: Position the remaining sections of the *Unit-AR Background Template Layout Sheet* as shown below onto the (4) strips.



Step 3: Subcut (4) fabric pieces to match the size and shape of the template layout sheet. Reposition the template layout sheet and cut (4) more pieces.



Step 4: Center the (8) pieces you cut under the template layout sheet as shown.



Step 5: Slice through the paper and fabric on Lines 1-2. Use your paper clips, and clip the templates and fabric pieces together for each section. Place the pieces back into Bag #1 with the foundation papers for *Unit AR*.

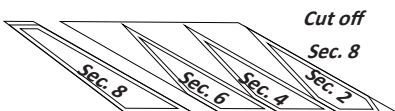
Bag #2: Unit AL Background Subcutting Instructions

The sub-cutting instructions for Unit AL are the same as Unit AR, only the template shapes are a mirror image.

► Unit AL: Background Template Layout Sheet: Bag #2

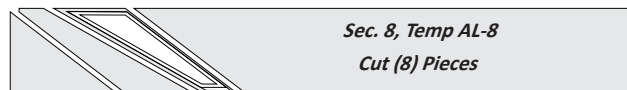
Step 1: Remove the Unit AL, Background Template Layout Sheet from Bag #2 and remove the Sec. 8, Temp AL-8 template piece by cutting on Line 1.

- (Sec. 2, Temp AL-2)
- (Sec. 4, Temp AL-4)
- (Sec. 6, Temp AL-6)
- (Sec. 8, Temp AL-8)



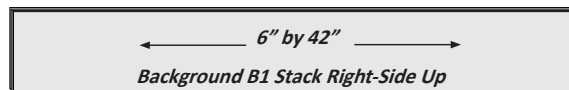
NOTE - Don't Sec. 2, 4, and 6! Place the remaining layout sheet with the (4) 6" by 42" strips cut from Color B1 in Bag #2.

Step 2: Remove the 6" by 42 strip (Color B1-T) from Bag #2. Place the fabric strip on your cutting board facing *right-side-up* with the strip pressed open. Position the **Sec. 8, Temp AL-8** as shown onto the strip and subcut (8) pieces rotating the template as each piece is cut (Graphic next column).



Step 3: Clip the template and fabric and pieces together and place back into Bag #2 with the foundation papers for Unit-AL.

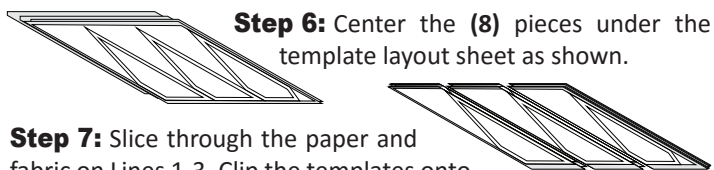
Step 4: Open and stack the (4) remaining 6" by 42" strips cut from Background Fabric B1-Black, *right-side-up* into (1) stack.



Step 5: Use the *Unit AL Background Template Layout Sheet* and cut (8) fabric pieces to match the size and shape of the template layout sheet. Repeating the steps outlined for Unit AR, cut the first (4) pieces, then rotate and reposition the layout sheet to cut the last (4) pieces.



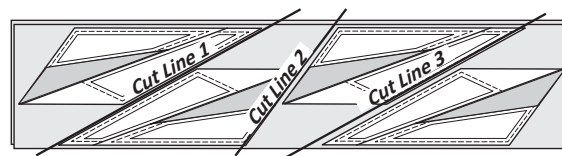
Step 6: Center the (8) pieces under the template layout sheet as shown.



Step 7: Slice through the paper and fabric on Lines 1-3. Clip the templates onto the fabric pieces and place the pieces back into Bag #2 with the foundation papers for *Unit AL*.

Bag #3: Unit AS Background Subcutting Instructions

Step 1: Open and stack the 9-1/4" by 42" strips cut from Background Fabric B1-B, *right-side-up* into (1) stack.



Step 2: Use the *Unit AS Background, Template Layout Sheet* and cut (8) fabric pieces to match the size and shape of the template layout sheet. Cut your first (2) pieces, rotate and reposition the layout sheet each time you cut (2) additional pieces.



Step 3: Center the (8) pieces under the Template Layout Sheet as shown. Slice through the paper and fabric on Lines 1-3. Clip the templates onto the fabric pieces and place the pieces back into Bag #3 with the foundation papers for *Unit AS*.

Feather Spike Fabric, Color IF1 Cutting Instructions

► Template Layout Sheets AR-1, AR-3, AR-5, & AR-7, Bag #1

The fabric strips are cut the same way for each *Template Layout Sheet AR-1, AR-3, AR-5 and AR-7*. The only differences are the size of the strip and the shape of the template.