

Clip before Cutting! Large paper clips can be used to hold the paper templates onto the fabric pieces. Adding the paper clips before cutting the Template Layout Sheets apart is more time efficient. Some people even use Staples!

Graphics are included in the cutting instructions to help you position the Templates and Template Layout Sheets onto your fabric strips. Cutting is broken down by Fabric #.

FABRIC SELECTION

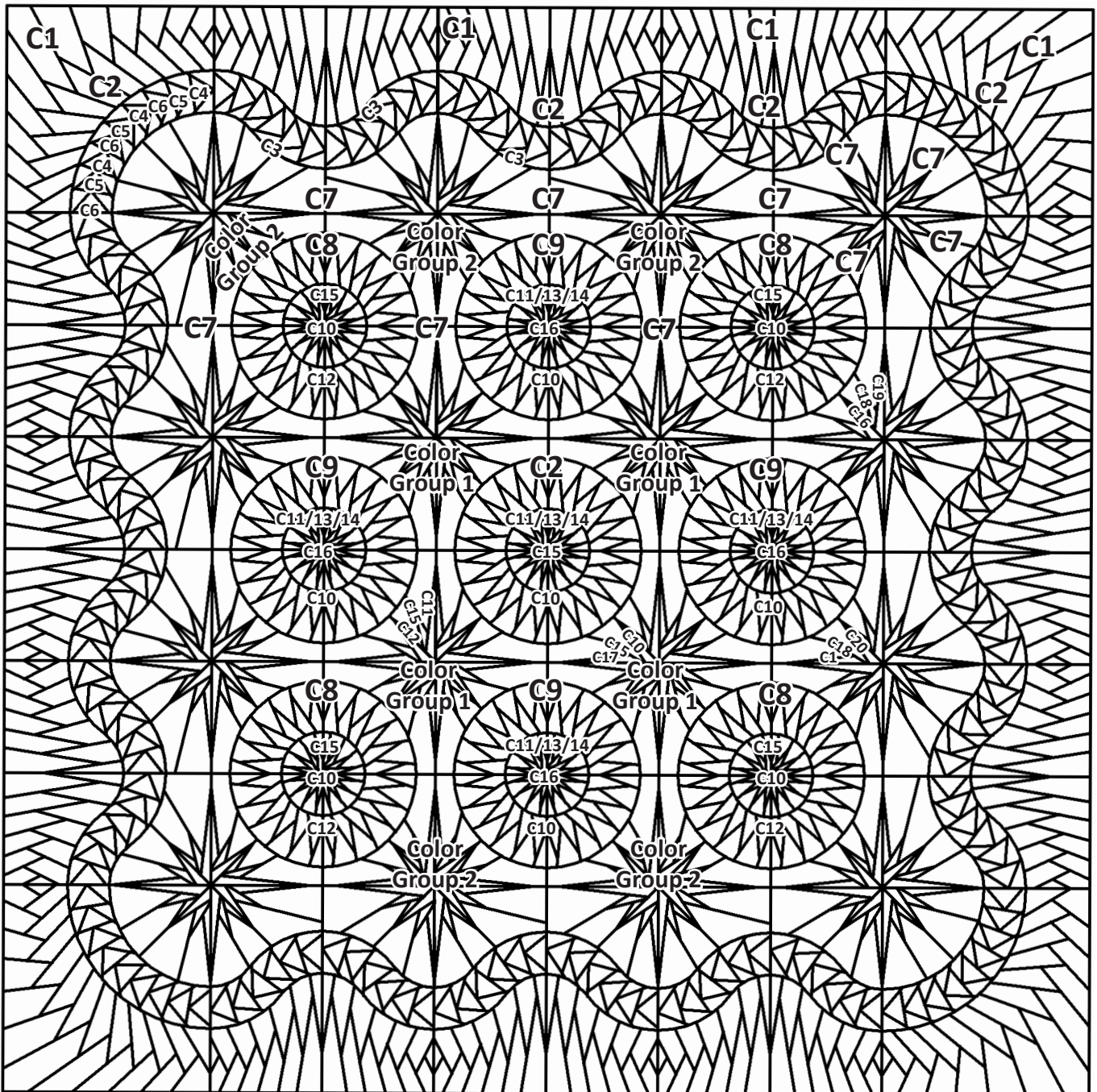
Choosing Fabrics: A total of twenty-one (20) fabrics were selected

to create the color layout for Frosted Thistle. The graphic below shows 1/4 of the quilt layout referencing the printed side of each foundation paper unit. Fabric numbers have been assigned to the section numbers on each unit. The color map below should be used as a reference to locate the location of your Color # (C#) as you cut out your fabric.

If you change the number of fabrics or the placement of the fabrics you choose, your cutting needs will no longer match the instructions. So, if you decide to repeat the same color in multiple locations, it is recommended that you refer to it in each location as a "different color" to stay consistent with how the cutting instructions have been organized.

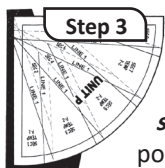
NOTE - Backside View, matches the printed side of the Foundation Paper. It is worth the time to actually write these numbers on your newsprint to stay organized!

Frosted Thistle Color Placement Diagram



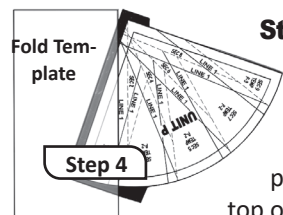
Step 2: Find Sec. 1 on the foundation paper. Place a small amount of fabric glue on the *wrong-side* of the paper under Sec. 1.

NOTE - Adding Glue: When adding the glue to the paper, take one very light swipe with the glue stick. The glue is used to adhere the fabric temporarily to the foundation paper until the first two pieces have been sewn to the paper.



Step 3: Position the fabric piece for Sec. 1 *wrong-side-up* on your table. Lift the foundation paper and position Sec. 1 over the top of the fabric as shown.

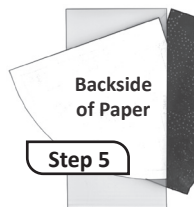
Make sure the underneath side of Sec. 1 is covered with the fabric. The fabric must extend beyond the dashed lines located next to Sec. 1.



Step 4: Place the fold template over the top of Sec. 1, lining up the edge of the fold template on Line 1.



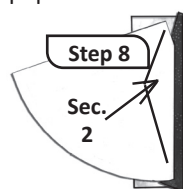
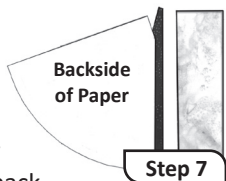
Step 5: Fold the paper back over the top of the fold template.



Step 6: Place the *Add-A-Quarter* ruler next to the folded back section on the paper lip-side down. Trim the fabric with your rotary cutter.

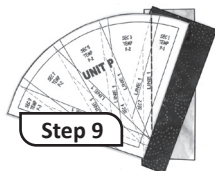
This leaves you with a quarter-inch seam allowance with which to line up the next piece of fabric.

Step 7: Remove the *Add-A-Quarter* and fold template. Place the fabric piece for Sec. 2, *right-side-up* next to the folded back paper as shown.



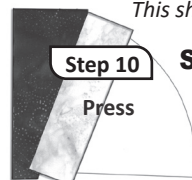
Step 8: Lift the foundation paper and position it directly over the fabric for Sec. 2. Notice the shaded area on the graphic where Sec. 2 is located on the *backside* of the paper. Line up the edge of the second fabric with the trimmed quarter-inch seam.

Step 9: Lift the two (2) pieces to your machine with the paper. Open the paper and sew on Line 1. Start at the top of the fabric and sew to the bottom of the fabric on Line 1. Always extend the sewing lines into the seam allowances.

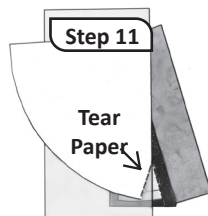


NOTE - Trimming Loose Threads: If you sew through the seam allowance just past the dashed line on the foundation paper you will automatically trim the loose threads from the backside of the paper when you trim your next seam allowance with the *Add-A-Quarter* ruler.

NOTE - Don't Iron the Glue! Loosen the glue under Sec. 1 at this time. This should be done before you press.

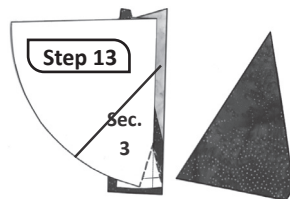
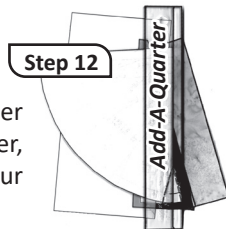


Step 10: Flip the paper over and press the fabric pieces to the open position on the *right-side* of the fabric. Don't press any folds into the seam lines.



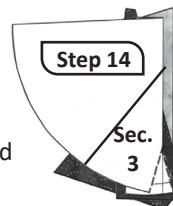
Step 11: Place the fold template over the top of Sec. 1 and 2. Line the edge up with Line 2. Lift the paper and tear the fabric loose from the paper at the bottom on Line 2. This allows the fabric to lay flat, making it easier to fold the paper back over the top of the fold template.

Step 12: Place the *Add-A-Quarter* ruler next to the folded back section on the paper, lip-side down, and trim the fabric with your rotary cutter.

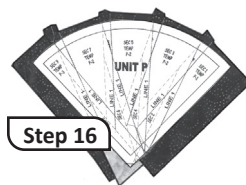


Step 13: Place the next piece of fabric for Sec. 3, *right-side-up* next to the folded back paper as shown.

Step 14: Lift the foundation paper and position Sec. 3 directly over the fabric. Line up the edge of the third fabric with the trimmed quarter-inch seam.



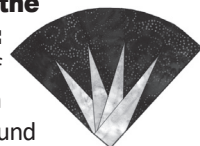
Step 15: Open the paper and sew on Line 2.



Step 16: Press the fabrics open on the *backside* of the paper. Continue adding each piece to the foundation paper until the paper piecing is complete.

Trimming the Foundation Papers:

When the foundation piecing is finished, trim off the excess fabric and foundation paper. The trim line on the foundation paper is the solid line around the outer edge of each unit. Line the edge of the ruler up with the black line on the outside edge of each unit. Trim right on the line. Our foundation papers include the quarter-inch seam allowance so don't leave any excess paper or fabric outside the solid line.



NOTE - Removing the Paper: Do not remove the foundation paper at this time. The paper will serve as a stabilizer in the curved piecing process and should not be removed until later.

FOUNDATION PAPER PIECING: BAG #6, UNIT PS: MAKE 36 UNITS

Before you begin match, the template and fabric pieces in Bag #7 up with the Sec. #s on the foundation papers. Stack them with Sec. 9 on the bottom and Sec. 1 on the top. Make the following color combinations:

- (4) Units with C2 as the background and C10 as the spikes.
- (16) Units with C9 as the background and C10 as the spikes.
- (16) Units with C8 as the background and C12 as the spikes.

Step 1: Place Unit PS *right-side-up* on your table and position as shown.

NOTE - Tracing the dashed lines: Turn the foundation paper over and trace the dashed lines on the backside of your first piece.



Step 2: Find Sec. 1 on the foundation paper. Place a small amount of fabric glue on the **wrong-side** of the paper under Sec. 1. Position the fabric piece for Sec. 1 **wrong-side-up** on your table. Lift the foundation paper and position Sec. 1 over the top of the fabric as shown. Make sure the underneath side of Sec. 1 is covered with the fabric. The fabric must extend beyond the dotted lines located next to Sec. 1.

Step 3: Place the fold template over the top of Sec. 1, lining up the edge of the fold template on Line 1.

Step 4: Fold the paper back over the top of the fold template.

Step 5: Place the **Add-A-Quarter** ruler next to the folded back section on the paper lip-side down and trim the fabric with your rotary cutter.

Step 6: Remove the **Add-A-Quarter** and fold template. Place the fabric piece for Sec. 2, **right-side-up** next to the folded back paper as shown.

Step 7: Lift the foundation paper and position it directly over the fabric for Sec. 2. Notice the area on the graphic where Sec. 2 is located on the **backside** of the paper. Line up the edge of the second fabric with the trimmed quarter-inch seam.

Step 8: Lift the two (2) pieces to your machine with the paper. Open the paper and sew on Line 1. Start at the top of Line 1 and sew to the bottom of the fabric on Line 1. Always extend the sewing lines into the seam allowances.

NOTE - Don't Iron the Glue! Loosen the glue under Sec. 1 at this time. This should be done before you press.

Step 9: Flip the paper over and press the fabric pieces to the open position on the **right-side** of the fabric. Don't press any folds into the seam lines.

Step 10: Place the fold template over the top of Sec. 1 and 2. Line the edge up with Line 2. Lift the paper and tear the fabric loose from the paper at the top on Line 2. This allows the fabric to lay flat, making it easier to fold the paper. Fold the paper back over the top of the fold template.

Step 11: Place the **Add-A-Quarter** ruler next to the folded back section on the paper, lip-side down, and trim the fabric with your rotary cutter.

Step 12: Place the next piece of fabric for Sec. 3, **right-side-up** next to the folded back paper as shown.

Step 13: Lift the foundation paper and position Sec. 3 directly over the fabric. Line up the edge of the third fabric with the trimmed quarter-inch seam.

Step 14: Open the paper and sew on Line 2.

Step 15: Press the fabrics open on the backside of the paper. Continue adding each piece to the foundation paper until the paper piecing is complete.

Trim the Foundation Papers: When the foundation piecing is finished, trim off the excess fabric and foundation paper. The trim line on the foundation paper is the solid line around the outer edge of each unit.

NOTE - Removing the Papers: Do not remove the foundation paper at this time. The paper will serve as a stabilizer until you are ready to start the curved piecing.

FOUNDATION PAPER PIECING: BAG #1 AND BAG #5: UNIT T1: MAKE

► Bag #1 and Bag #5: Unit T1: Make 36 each Left and Right Units:

Match the template and fabric pieces up with the Sec. #s on the foundation papers for the left and right units. There are TWO colorways for this block, so it may be helpful to not only sort by Left Unit and Right Unit, but also by color group. Below is a list of the template pieces and fabric colors used to make both units.

Unit T1-L: Left Side Templates (Colorway #1) (Make 16):

- Bag #5: Color #12, Template T5, Sec. 1.
- Bag #1: Color #7, Template T1-2-L, Sec. 2.
- Bag #5: Color #15, Template T3, Sec. 3.
- Bag #1: Color #7, Template T1-4-L, Sec. 4.
- Bag #5: Color #11, Template T1, Sec. 5.

Unit T1-R: Right Side Templates (Colorway #1) (Make 16):

- Bag #5: Color #10, Template T1, Sec. 1.
- Bag #1: Color #7, Template T1-2-R, Sec. 2.
- Bag #5: Color #15, Template T3, Sec. 3.
- Bag #1: Color #7, Template T1-4-R, Sec. 4.
- Bag #5: Color #17, Template T5, Sec. 5.

Unit T1-L: Left Side Templates (Colorway #2) (Make 20):

- Bag #5: Color #16, Template T5, Sec. 1.
- Bag #1: Color #7, Template T1-2-L, Sec. 2.
- Bag #5: Color #18, Template T3, Sec. 3.
- Bag #1: Color #7, Template T1-4-L, Sec. 4.
- Bag #5: Color #19, Template T1, Sec. 5.