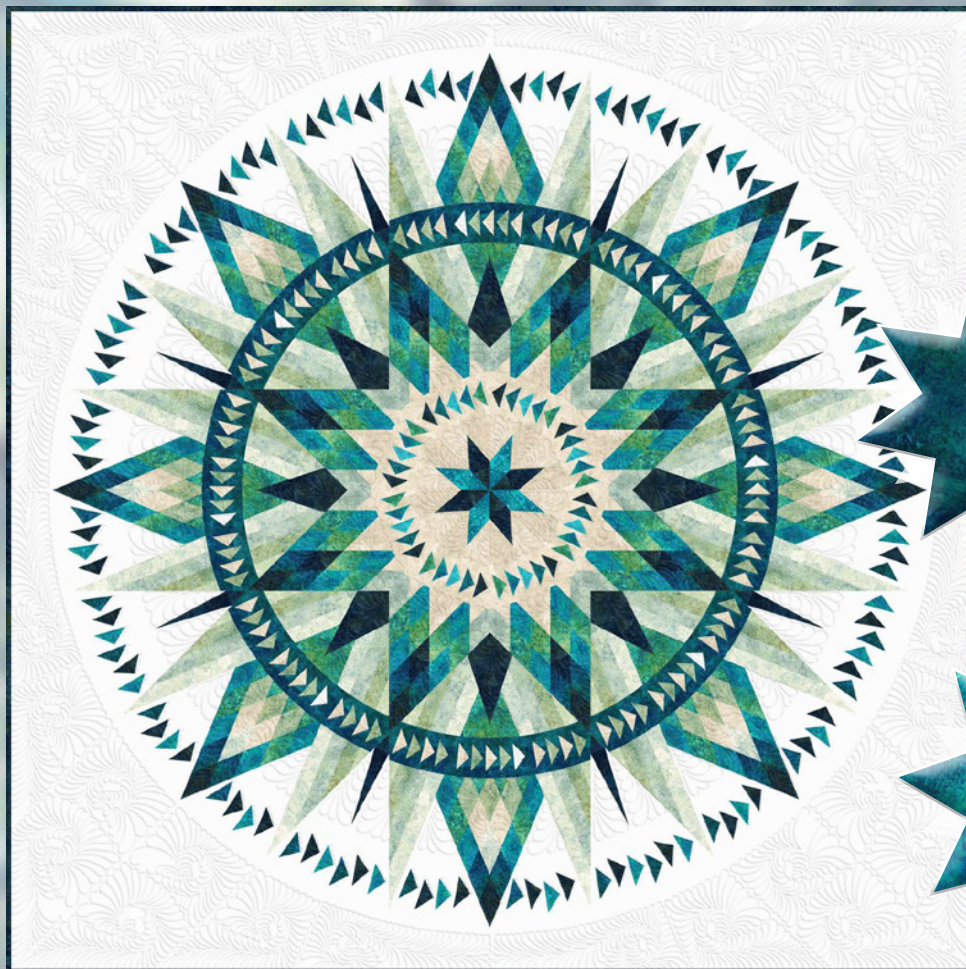


# Moonglow Cactus

**NORTHCOTT**  
Cottons that feel like silk

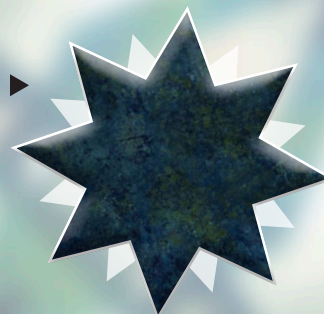
Assorted Stonehenge  
Gradations Collections

**96" x 96"**

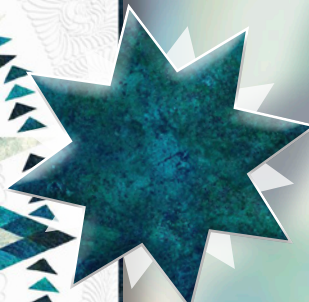


Backing: 8 3/4 yd • Binding: 7/8 yd, 26755-66

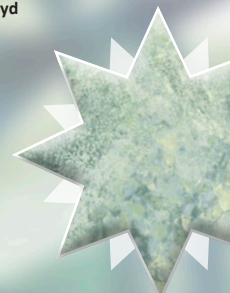
A-A2:b, A-A8, A-S15,  
A-S19, B14, C-A2,  
C-S19, D10, D4, D6, D8,  
E2, E5, E8  
26755-48  
2 1/8 yd



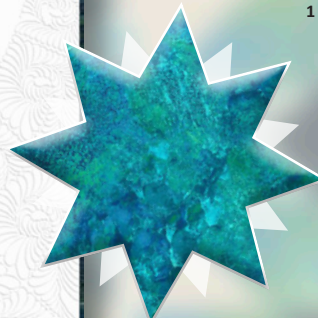
A-A7, A-S17, A-S18, B1,  
C-A3, C-S17, C-S18, D3,  
D7, E4, E7  
26755-66  
2 3/8 yd



A-S5, A-S9, B12, B17,  
B21, B25  
26756-480  
1 yd



A-A2:a, A-A5, A-S6,  
A-S8, A-S14, A-S16,  
C-S5, C-S9, C-S14,  
C-S16, D5, D9,  
E6, E9  
26756-66  
1 3/8 yd



A-A6  
26757-66  
1/8 yd

B11, B16, B20, B24, B3,  
B5, B7, B9, C-A5, C-A7,  
C-S6, C-S7, C-S8  
26756-780  
1 3/8 yd



B10, B15, B19, B23  
26758-78  
3/8 yd



B13, B18, B22, B26, C-S15  
26758-48  
1 yd



A-A1, A-A3, A-S1, A-S2, A-S3,  
A-S4, A-S7, B2, B4, B6, B8,  
C-A4, C-A6, C-A8, C-S11, C-S12  
26758-98  
2 1/8 yd

A-A4, A-S10, A-S11, A-S12,  
A-S13, C-A1, C-S1, C-S2,  
C-S3, C-S4, C-S10, C-S13  
39382-74  
1 3/8 yd



D1, D2, E1, E3, F1  
3956-100  
7 5/8 yd



*Quiltworx.com*

E-mail: [info@quiltworx.com](mailto:info@quiltworx.com)  
Website: [www.quiltworx.com](http://www.quiltworx.com)

Visit us on:

