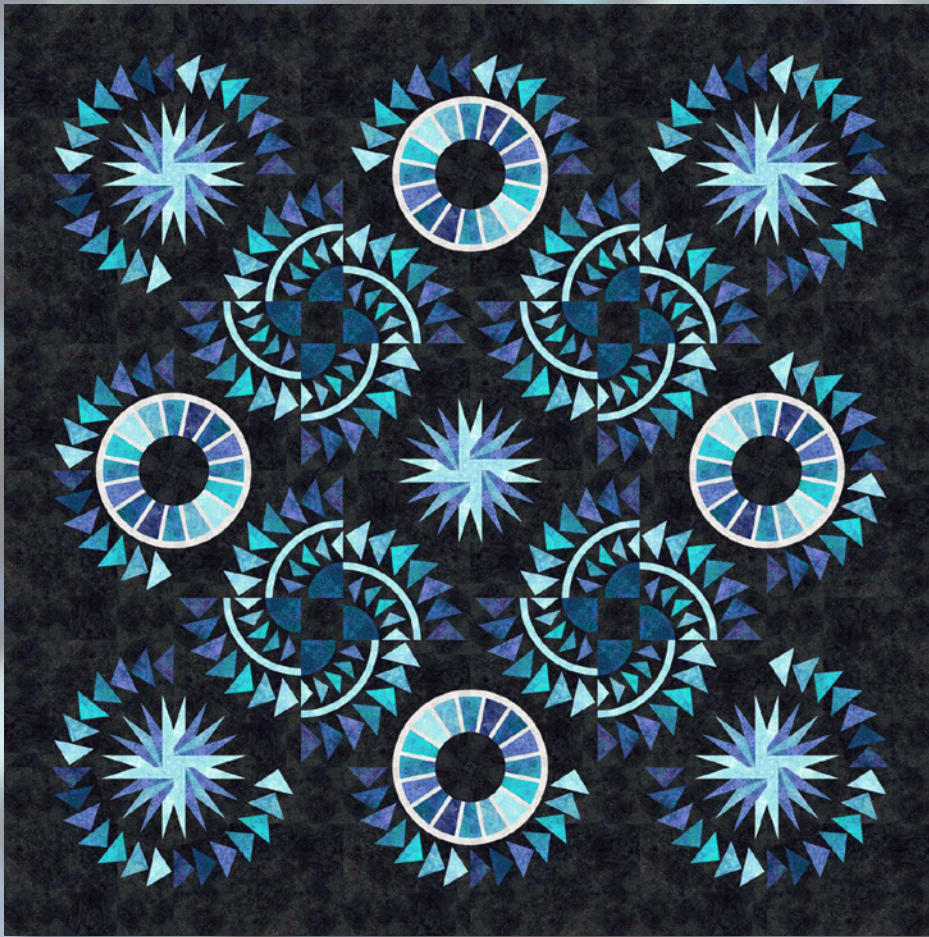


Riptides

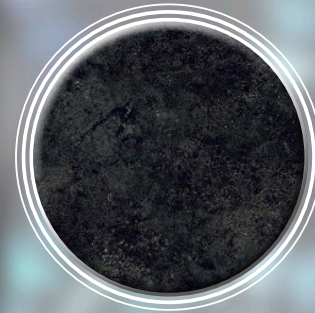
66" x 66"

NORTHCOTT
Cottons that feel like silk

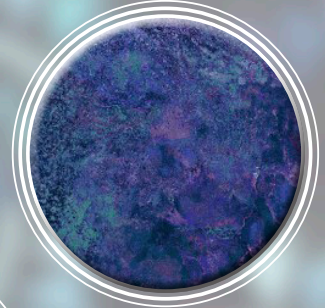
Stonehenge Gradations



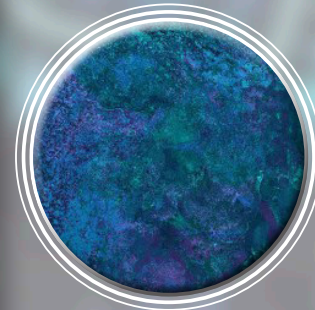
Backing: 4 1/8 yd • Binding: 5/8 yd, 26755-99



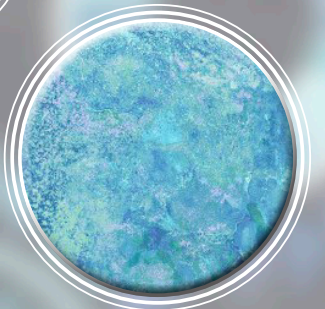
A1, B2-1, B4-1, B5-2, C3-2, C3-3, D3-2, D3-3, E3-2, E3-3
26755-99
7 7/8 yd



B4-2:b(2), C3-1:a,
D3-1:a, E3-1:a
26756-47
1/2 yd

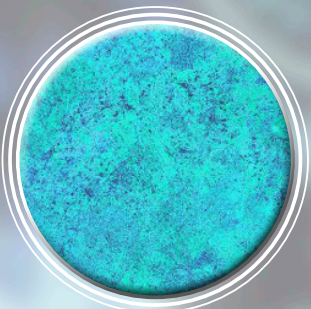


B4-2:c(2), B5-1, C3-1:b, D3-1:b, E3-1:b
26756-49
5/8 yd

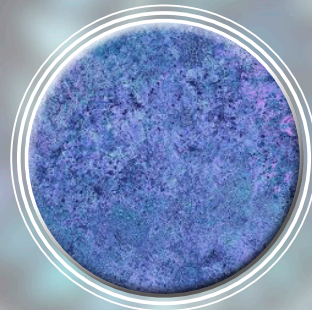
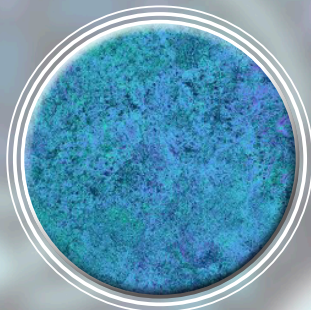


B2-2:c, B4-2:d(1), B5-3:b,
C3-1:f, D3-1:f, E3-1:f
26756-490
3/4 yd

B5-3:c, B4-2:b(1),
E3-1:e, D3-1:e,
C3-1:e
26757-66
1/2 yd

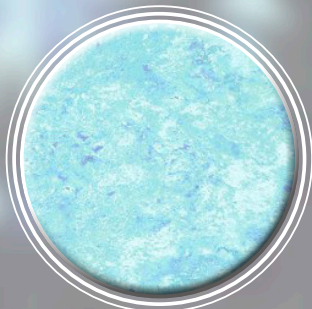


B4-2:a, B5-3:d, C3-1:d, D3-1:d, E3-1:d
26757-49
5/8 yd



B2-2:b, B2-2:d, B4-2:d(2), B5-3:e, C3-1:c, D3-1:c, E3-1:c
26757-47
1 yd

B2-2:a, B2-2:e, D3-1:g, E3-1:g, C3-1:g,
B4-2:c(1), B5-3:a,
B5-4
26758-49
1 1/2 yd



B4-3, B4-4
26758-99
3/4 yd

Quiltworx.com

E-mail: info@quiltworx.com
Website: www.quiltworx.com

Visit us on:

