

Pocket Full of Posies

Hollman
CALIFORNIA INTERNATIONAL FABRICS

Jewel Basin Collection



Visit the Quiltworx YouTube channel for a video series on how to make this quilt. Starting October 11, 2023!

99" x 99"

NOTE - *: Fabrics marked with an asterisk are rounded up an extra 1/8 yard from Quiltster.

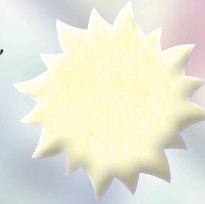


Backing: 9 yd • Binding: 7/8 yd, MRD25-160-Spice

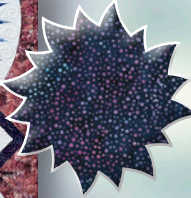
B1, C-AP2, C-AP4,
D-AP4, D-AP7
1895-554-Treetop
5/8 yd

B3-2:b, B3-3, C2, C4:a,
C4:b, C6:a, C6:b, D7
885-536-Aquarius
7 3/4* yd

B3-2:a, B3-2:c, C-AP12,
D1, D-AP12
1895-500 Gardenia
3 yd



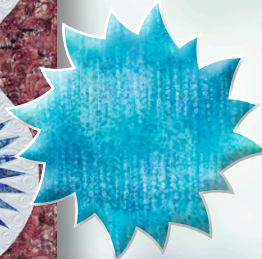
C1, C3:b, D4
885-404-Bubblegum
1 1/2 yd



C-AP11
MRD23-21-Teal
1/8 yd



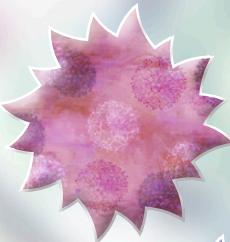
C-AP9
MRD27-41-Aqua
1/8 yd



C5:a, D5, C-AP13, D-AP15,
D-AP18, D-AP20
MRD28-140-Petal
1 1/4 yd



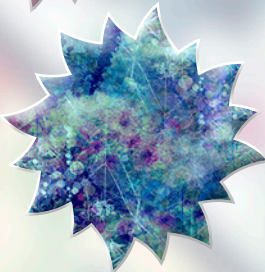
D2, D3, C-AP10,
C-AP14
MRD22-140-Petal
3/4 yd



D-AP16, D-AP17, D-AP19
MRD27-110-Daffodil
1/4 yd



C5:b, C-AP15, D6,
D-AP14
MRD25-87-Blueberry
3 1/2* yd



C-AP16, D-AP13
MRD27-D7-Dusty-Blue
1/4 yd



B3-1:b, C-AP1, C-AP3, C-AP5,
D-AP1, D-AP2, D-AP5, D-AP8
MRD24-581-Bluegrass
1 7/8 yd

B3-1:a, C3:a, D8
MRD25-160-Spice
3 3/4* yd



D-AP3, D-AP6, D-AP9,
D-AP10, D-AP11, C-AP6,
C-AP7, C-AP8
MRD27-445-Spearmint
3/4* yd

Quiltworx.com

E-mail: info@quiltworx.com

Website: www.quiltworx.com

Visit us on:

