

## GROUP D-011: BASKET OF POSIES

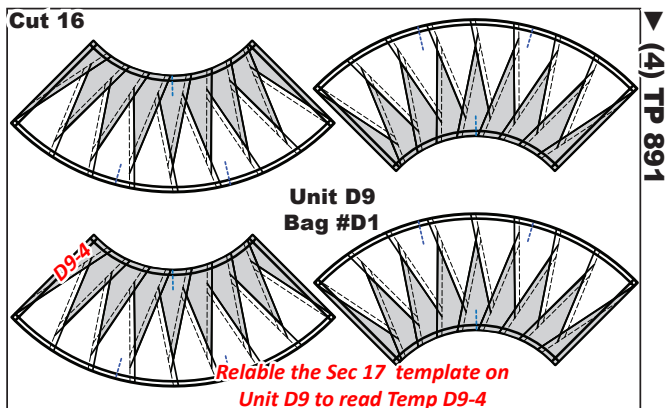
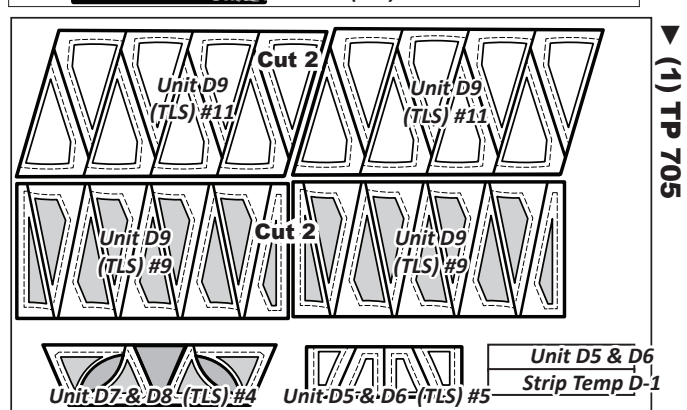
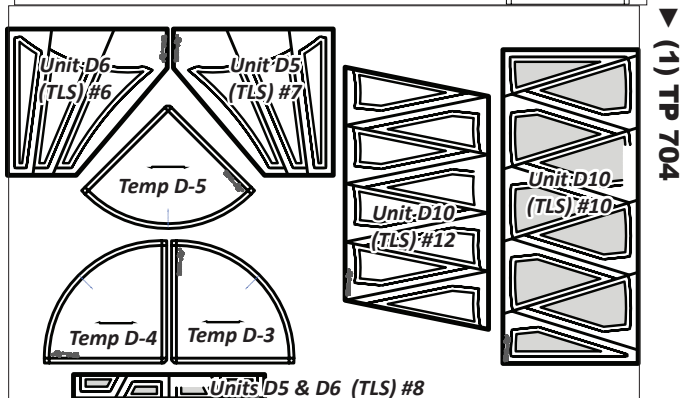
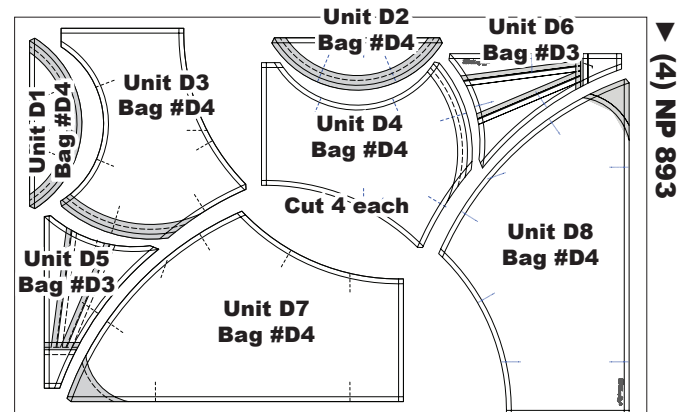
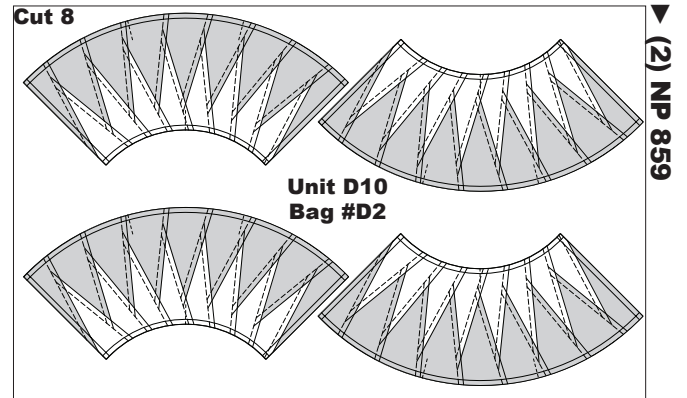
**Ziploc Storage Bags:** You will need (6) bags to complete the organization for these instructions. Label the bags as follows to stay organized while cutting the Foundation Units and Templates.

- Bag #D1: (16) Unit D9 Foundation Papers
- Bag #D2: (8) Unit D10 Foundation Papers
- Bag #D3: (4) ea. Units D5 & D6 Foundation papers
- Bag #D4: (4) ea. Units D1- D4, D7, D8 Foundation Papers
- Bag #D5: (1) ea. T-Template D3-D9
- Template Bag #D6: (TLS) 1-11, Strip Temp D1, & Alternative Basket Templates B5-1 & B6-1.

## PREPARING THE FOUNDATION PAPERS:

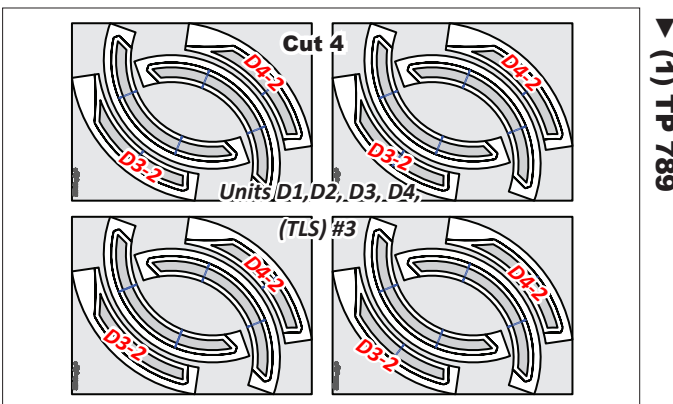
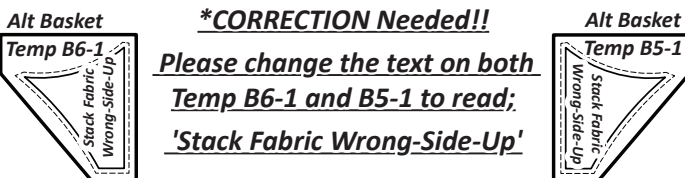
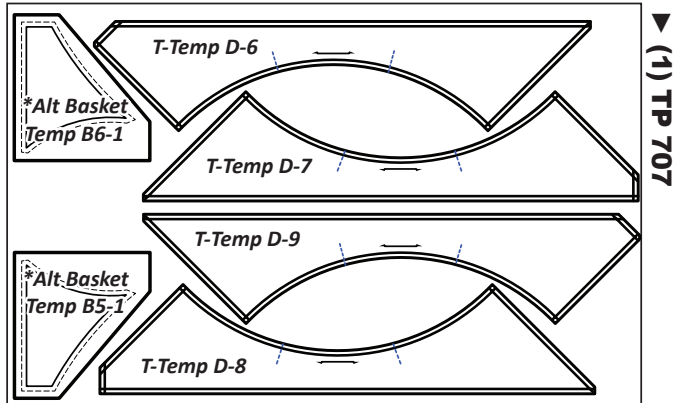
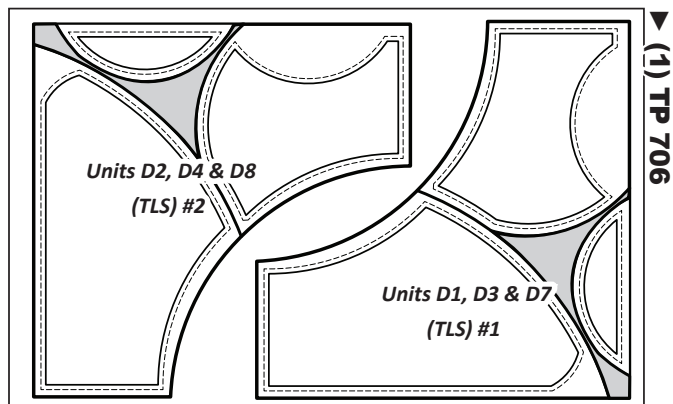
**Foundation Papers:** This booklet includes enough foundation papers to complete (1) 99" x 99" *Queen Expansion Border* noted as Group D. This layout is one of many used in several of our Mixer Patterns for our Queen Expansion Layouts. The foundation papers and templates for this pattern are printed on newsprint. Newsprint is lightweight and tears away from your stitches without damaging the threads. Please pull apart this package and check, at this time, to make sure your pattern includes all of the newsprint pages listed below.

Cut out (16) each of Unit D9 [NP 891], (8) each of Unit D10 [NP 892] (4) each of Units D1–D8 [NP 893], (4) (TLS) #3 [TP 789], (2) (TLS) #9 & 113 [TP 705] and (1) each of the remaining Templates and Template Layout Sheets [TP 704 thru 789]. The associated Templates and Template Layout Sheets (TLS) are placed in a temporary bag. After the fabric has been cut the individual Sec. Templates for the (TLS) are placed into assigned Bag #s with their associated foundation papers. Reference the newsprint graphics that follow for the location of each Unit, Template and TLS along with the associated Bag # if applicable. \*Refer back to General Information for Foundation papers and templates for additional instructions on how to prepare your foundation papers and templates.



**NOTE - Tips! Reuse of Templates:** Templates and (TLS) are repositioned on the cut strips to achieve the number of cuts required in the cutting instructions. Please read carefully to ensure the correct # of pieces are stacked beneath each template before cutting.

**NOTE - Tip! Glue:** Repositionable glue placed on the backside of each template will keep the templates and (TLS) from moving in the cutting process.



## ► Yardage Information:

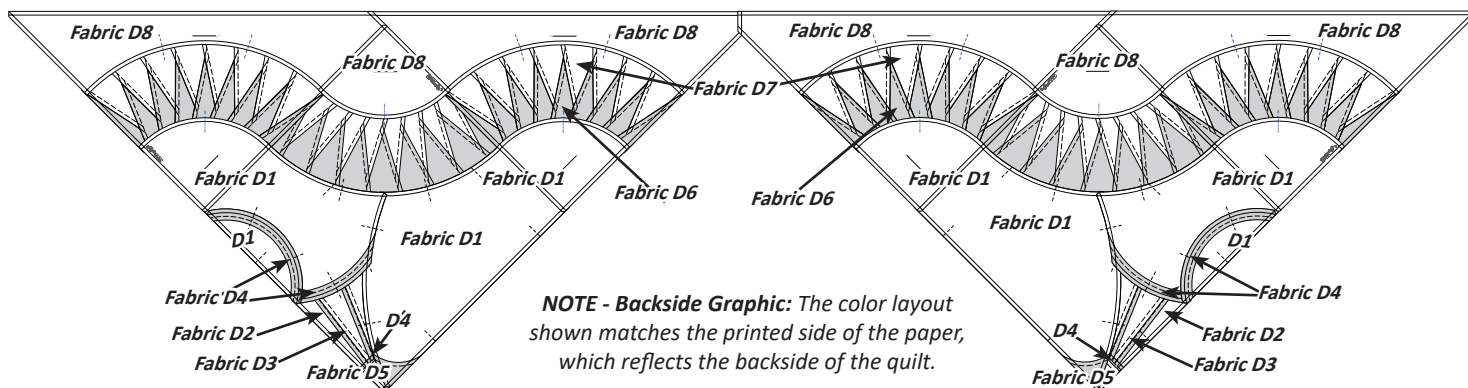
The *Unit Chart* includes yardage, fabric numbers, and a reference to the Fabrics #s assigned to the T-Templates and (TLS's) for Units D1-10. Fabrics D1-D8 are assigned to all the border templates. The applique fabrics are included in a second fabric chart in the applique booklet. For each Fabric # we have listed yardage, total inches, along with the sizes and number of strips to cut from each fabric.

### Units D1 to D10 Yardage, Make (4) each Left and Right Borders

GROUP-D FABRIC #	YARDAGE INCH	FABRIC SWATCH
<u>Fabric D1:</u> Units D1-D4, D7, D8 T-Temp D-3 & D-4 TLS #1 & #2	2-3/8 yds or (80")  Cut (4) 20" Strips	Fabric Swatch D1
<u>Fabric D2 (Bsk)</u> Units D5 & D6 TLS #6 & #7	1/2 yd or (15-1/2")  Cut (2) 7-3/4" Strips	Fabric Swatch D2
<u>Fabric D3 (Optional)*</u> Units D5 & D6 Strip Temp D-1	1/4 yds or (5-1/2")  Cut (2) 2-3/4" Strips	Fabric Swatch D3
<u>Fabric D4</u> Units D1-D8 TLS #3 & TLS #8	3/8 yd or 12-1/2"  Cut (1) 12-1/2" Strip	Fabric Swatch D4
<u>Fabric D5</u> Units D5, D6, D7, D8 TLS #4 & #5	1/8 yd or (3-1/2")  Cut (1) 3-1/2" Strip	Fabric Swatch D5
<u>Fabric D6</u> Unit D9 & D10 TLS #9 & #10	2-1/2 yds or (90")  Cut (4) 22-1/2" Strips	Fabric Swatch D6
<u>Fabric D7</u> Unit D9 & D10 TLS #11 & #12	1-3/4 yds or (62")  Cut (4) 15-1/2" Strips	Fabric Swatch D7
<u>Fabric D8</u> T-Temps D-5 to D-9	2 Yds or 72"  Cut (4) 18" Strips	Fabric Swatch D8

**NOTE - \*Fabric D3:** Fabric D3 is only required if you choose to add the small basket sashing on your block. If you are making the basket all the same color, you can use the Alt Basket Temps on TP 707 and skip Fabric D3.

## ► Fabric Color Layout



**Step 4:** To complete the cutting, trim the excess fabric off around the perimeter of each **Sec 2, Temp D12**. Clip the pieces together and Place in Bag # D4.

### ► Fabric D5: (TLS) #4 & #5

**NOTE - TLS #5:** The original newspaper paper says you only need a 3" strip for TLS #5. Although this is technically fine, since we decided to put it on the same strip as TLS #6, we have updated the cut size for future prints to say 3-1/2" x 42". Please ignore the 3" x 42" strip cut size and follow the cutting instructions below.

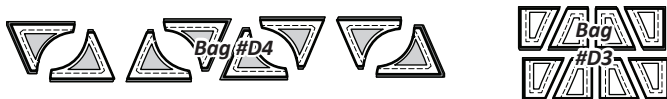
**Step 1:** Cut (1) 3-1/2" by 42" strip from Fabric D5, and stack facing **right-side up**. Position **Units D7 & D8, (TLS) #4** along the left edge of the stack and **Units D5 & D6, (TLS) #5** on the right edge. Reposition for the 2nd cut of each piece.



**Step 2:** Cut (2) pieces matching the size and shape of each (TLS).



**Step 3:** Stack these, place the TLSs on top, and complete the cutting on each Cut Line on both (TLSs). *Note: the cut line on (TLS) #4 are curved lines. You may find it easier to cut these pieces with a small pair of scissors or free-hand with a rotary cutter. It also might be easier to cut these one at a time instead of stacking them. Just re-use the templates for the 2nd cut if you choose to cut one at a time.*



**Step 4:** Clip each temp to the fabric beneath and place Templates D7-2 & D8-2 in Bag #4 and Templates D5-5 & D6-5 into Bag #D3.

### ► Fabric D6: (TLS) #9 & #10

**NOTE - If you precut your fabric strips using the Quiltster APP, each 22-1/2" strip is sub-cut into (3) 7-1/2" strips to achieve the number of strips listed in Step 1.**

**Step 1:** Cut (12) 7-1/2" by 42" strips, Fabric D6 and stack facing **right-side up** into two stacks. One stack with (8) strips and one stack with (4) strips.

**Step 2:** Position both of the **Unit D9 (TLS) #9** onto your first stack with (8) strips. Cut (16) pieces, (8) per TLS, matching the size of the (TLS).



**Step 3:** To complete the cutting, cut the templates on each Cut Line in numerical order to separate the individual pieces. Clip each section template to the fabric beneath. Place the Unit D9 Templates in Bag #D1.



**Step 4:** Position **Unit D10 (TLS) #10** on your stack and cut (8) pieces matching the size of the (TLS).



**Step 5:** Stack the (8) pieces beneath the (TLS) and cut on each Cut Line to separate the individual pieces. Clip each section template to the fabric beneath. Place the Unit D10 templates into Bag #D2.



### ► Fabric D7: (TLS) #9 & #10

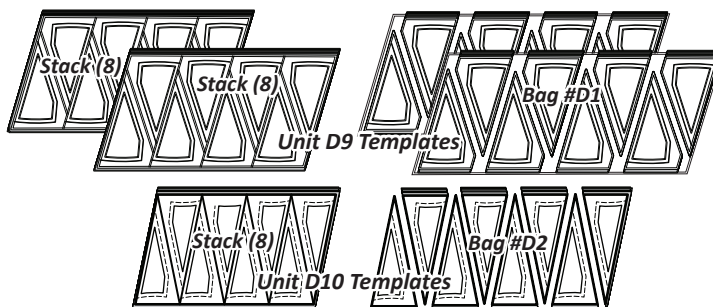
**NOTE - If you precut your fabric strips using the Quiltster APP, each 15-1/2" strip is sub-cut into (2) 7-3/4" strips to achieve the number of strips listed in Step 1.**

**Step 1:** Cut (8) 7-3/4" by 42" strips from Fabric D7 and stack facing **right-side**.

**Step 2:** Position both of the **Unit D9 (TLS) #11** onto your stack starting at the left edge of the strips and cut (16) pieces. Then position **Unit D10 (TLS) #12** onto your stack starting at the right edge and cut (8) pieces.



**Step 3:** To complete the cutting, cut the templates on each Cut Line in numerical order. Clip the section template to the fabric beneath and place the Unit D9 Templates in Bag #D1 and the Unit D-10 pieces in Bag #D2.

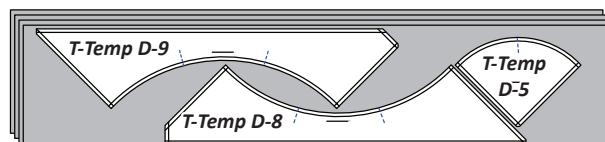


### ► Fabric D8: T-Temp D-5 thru D-9

**NOTE - If you precut your fabric strips using the Quiltster APP, each of the (4) 18" strips are sub-cut into (2) 9" strips of strips in Step 1.**

**Step 1:** Cut (8) 9" by 42" strips from Fabric D8. Stack in two equal stacks, (4) strips each, facing **right-side up**.

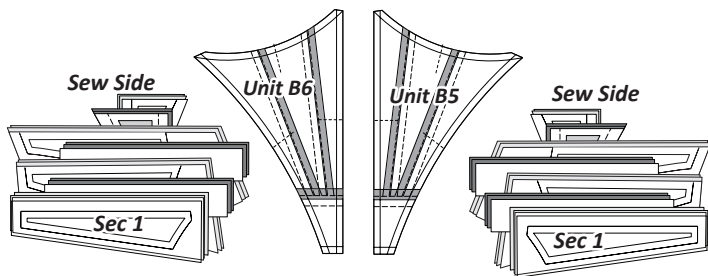
**Step 2:** T-Template D-9, D-8, & D-5 are arranged to fit on the first stack. T-Template D-7, D-6, & D-4 are arranged to fit on the second stack. Cut (4) pieces matching the size and shape of each T-Template.





## STACKING: UNITS D5 & D6 (SASHING OPTION)

The D5 and D6 units are stacked and assembled the same. The template pieces are stacked in the sewing order starting with the largest Sec. # on the bottom, finishing with Sec. 1 on top.



## FOUNDATION PAPER PIECING: UNIT D5 & UNIT D6

**NOTE - Tracing the Dashed Lines:** Optional.

**Step 1:** Place the first piece of fabric **wrong-side up** on your table. Lift the foundation paper, and slide the fabric under Sec. 1. Use glue to adhere the fabric to the **backside** of the paper. Repeat for each foundation unit before moving on to Step 2.

**NOTE - Fabric Placement:** The wrong-side of the fabric is against the backside of the paper. The fabric must extend beyond the edges of the dashed lines to cover the underneath side of Sec. 1.

**Step 2:** Place the fold template over the top of Sec. 1, lining the edge up with the solid black line marked Line 1.

**Step 3:** Fold the paper back over the top of the fold template.

**Step 4:** Place the **Add-A-Quarter** ruler next to the folded back paper lip-side down, and trim the fabric with your rotary cutter. This leaves a quarter-inch seam allowance which will be lined up with the sew-side on the next piece of fabric.

**Step 5:** Place the fabric piece for Sec. 2 **right-side up** next to the folded back paper.

**Step 6:** Lift the foundation paper, and slide the fabric under Sec. 2. Repeat **Steps 2-6** for each foundation paper before moving onto Step 7.

**Step 7:** Fold open the paper and sew on Line 1. The stitches should start and stop about 1/8" past the beginning and the end of each stitch line.

**Step 8:** Continue sewing the fabric pieces under each section 3-5 on the foundation paper. Position the fold template over the top of Sections 1 thru 5, lining the edge with Line 5. Before you can fold the paper back, you

will need to tear the paper along each stitch line, stopping when you hit the fold template.

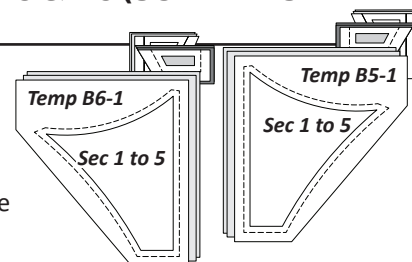
**Step 9:** Trim the fabric with the **Add-A-Quarter** ruler, and position the Sec 6 fabric **right-side-up** next to the paper. Lift the paper and slide the fabric in position under Sec. 3.

**Step 10:** Open the paper, sew on Line 2, and press. Repeat this process with the last sections on the foundation paper.

**Step 11:** When the piecing is done, sew the (TRP) Lines. Trim the threads, then trim the excess fabric and paper off around the perimeter of the exterior dark line printed on the foundation paper. Do not remove the foundation paper at this time. Place these pieces into Bag #D3.

## STACKING: UNIT D5 & D6 (SOLID BASKET OPTION)

The stacking for the alternative basket is very much the same as the previous units. The only difference is the Fabric # one is placed under Sec. 1 to 5.



## FOUNDATION PAPER PIECING: UNIT D9

**NOTE - Tracing the Dashed Lines:** Trace only Line 5 & 6.

**Step 1:** Place the first piece of fabric **wrong-side up** on your table. Lift the foundation paper, and slide the fabric under Sec. 1. Use glue to adhere the fabric to the **backside** of the paper. Repeat for each foundation unit before moving on to Step 2.

**NOTE - Remember:** The wrong-side of the fabric is against the backside of the paper.

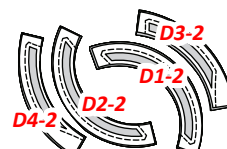
**Step 2:** Place the fold template over the top of Sec. 1. Fold back the paper and trim a 1/4" seam allowance which will be lined up with the sew-side on the next piece of fabric.

**Step 3:** Position the 2<sup>nd</sup> piece of fabric under Sec. 6 and continue with the process.

**Step 4:** When the paper piecing is done, for both basket units, sew the (TRP) Lines, trim the threads on the front and backside of the paper, then trim the excess fabric and paper off around the perimeter of the exterior lines printed on the foundation paper. Do not remove the foundation paper at this time. Place these pieces into Bag #D3.

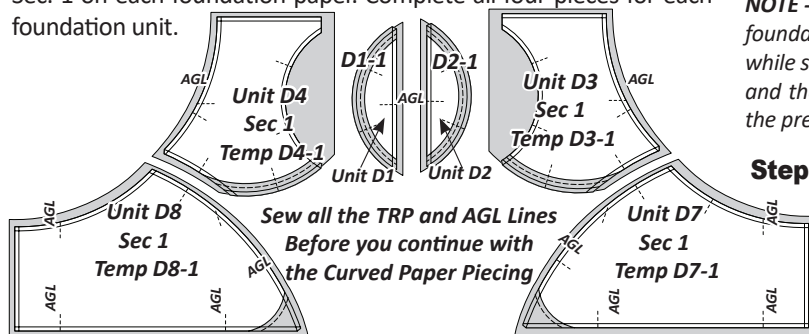
## CURVED PAPER PIECING UNITS D1-D4, D7 & D8, BAG #D4

Units D1-D4, then D7 & D8 are paired with the template pieces for basket handles, basket rim, and basket base. There are only two templates per unit so stacking is a waste of time.



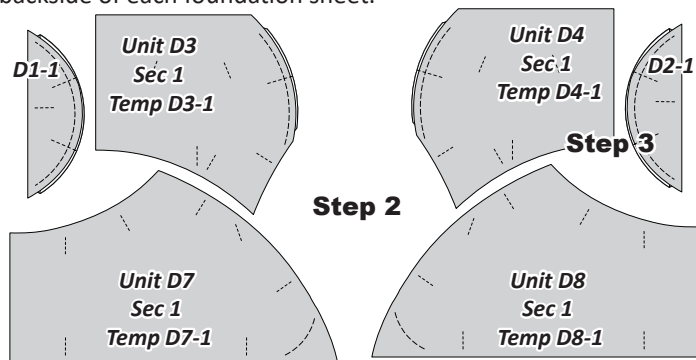
**NOTE - TRP & AGL Lines:** All the background units are printed with several TRP and AGL Lines. If AGL lines are new to you, reference your introduction booklet under techniques to learn more. It is best to sew the TRP Lines at the same time you are sewing Basting Line 1. Then, go back and sew your AGL lines, because I highly recommend that you use a different colored thread for the AGL lines. Most of my students remove the threads for the TRP lines once the seam is sewn where the TRP line are joined. The AGL lines are especially important if you are doing the Digitized Embroidery. They help you line the quilt sections up properly, so you don't want to remove those threads until after the Digitized Embroidery is completed. The AGL Lines can also be used to align the block groups up with the applique LP sheets, when preparing your pieces for Invisible Machine Applique so we find them useful regardless of which applique method you choose.

**Step 1:** Place the first piece of fabric for each unit **wrong-side up** on your table. Lift the foundation paper and slide the fabric under Sec. 1 on each foundation paper. Complete all four pieces for each foundation unit.



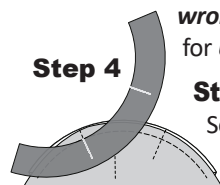
**NOTE - Tips:** Repositionable glue is used to temporarily adhere the fabric to the paper prior to sewing the TRP Lines. If you prefer not to use the repositionable glue you can use your Flower Pins. The papers are fairly large and a little awkward to handle so you may consider using both glue and pins.

**Step 2:** Take the papers and fabric for each unit to your machine, set your stitch length at 2.0, then sew on the dashed line labeled Basting Stitch Line 1, then proceed to sew the TRP Lines. Change thread colors, then sew the AGL lines. Trim the threads for the Basting Stitches, TRP's, and AGL Lines, on both the front and backside of each foundation sheet.



**Curved Paper Piecing Graphics:** The remaining graphics reference for Curved Paper Piecing were created with the papers for Unit D1. The curved piecing process is the same for each unit, so please reference these instructions for all remaining units.

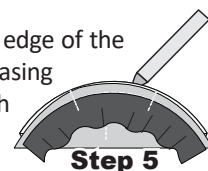
**Step 3:** Remove the paper from the **Sec. 2, Temp D1-2** fabric. Position the fabric piece facing **wrong-side-up** next to the papers for Unit D1.



**Step 4:** Position Unit D1, **fabric-side-up** and the Sec. 2 template pieces **wrong-side-up**. Match the left TRP Lines along the curved edge of your

paper. Place sew-side, (inside curve) along the Basting Stitch Line as shown. A small pin is used to secure the fabric from moving. Place in the center of both pieces.

**Step 5:** Using a glue pen, glue the remaining edge of the fabric along the edge of the basting stitches, easing it in place. Repeat the previous steps for each Foundation **Unit D1-D4, D7 & D8**.



**NOTE - Glue Helps:** A small amount of fabric glue added between both fabrics, along the raw edges, keeps the edges together as you feed the fabric under the presser foot when sewing.

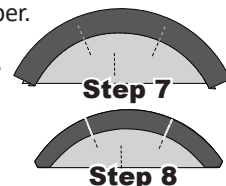


**Step 6:** Flip the papers **printed-side-up** at your sewing machine, with the Sec. 2 fabric against the feed-dogs. Then stitch on Sew Line 2.

**NOTE - Avoiding Puckers:** To avoid puckers while sewing, hold the foundation paper and Sec. 1 fabric up a bit away from the machine bed while sewing; this allows the fabric to feed evenly between the presser foot and the feed dogs. Also, run your finger along Sew Line 2 just in front of the presser foot to smooth out any pleats that may occur under the paper.

**Step 7:** After the sewing is completed, press the Sec. 2 fabric open on the **backside** of the foundation paper.

**Step 8:** When the piecing is finished, trim off the excess fabric and paper along the exterior line around the perimeter of each foundation sheet.



**NOTE - After the trimming is completed around the exterior lines, the excess fabric and basting stitches under the Sec. 2 fabric, needs to be trimmed off. Leaving this excess fabric under the leaf is untidy and will show after the quilt is quilted.**

**Step 9:** To do this, position Unit A1, paper side down on your cutting table; the fabric should be facing up. Fold the fabric sewn over Sec. 2 back along the sew-line.



**Step 10:** Use your rotary cutter and trim along the inside edge of Basting Line 1 to remove the excess fabric, paper and basting thread. When you are done trimming, a scant quarter-inch seam is left showing along Sew Line 1.



**Step 11:** To finish the pieces re-press the Sec 2 fabric to the finished position. You will still have part of the paper left on the backside of the Unit. Leave this paper in place until it's time to sew the units together.

**NOTE - Reason for Trimming:** The reason we trim off the Basting Line is to prevent a shadow and bulky bump under the fabric after the quilt is quilted. The basting thread will show under a lighter fabric after they are quilted if you don't trim off the stitches. So when cutting just cut to the inside of the Basting line to remove the threads. This will give you a very clean cut scant quarter-inch seam allowance.

**Unit Curved Piecing Graphics:** When the curved piecing is complete for Unit D1, go back and complete the piecing for the remaining Units. After the paper piecing is completed for each bag return the pieced units back into their assigned Bag #s and start with the next bag. Graphics showing the curved piecing steps to get you started for each of the additional units are shown at the top of Page 8.