

## Quilt Size: (3) 30" x 30"

### GENERAL INFORMATION

Suncatcher Table Toppers is a foundation paper pieced design by Quiltworx and is part of our Fireworks Block Mixer Series. Foundation paper piecing, floating points, Template Layout Sheets, and curved paper piecing techniques for attaching the curved sashing are all featured in these instructions. These are design standards our customers have come to expect from Quiltworx patterns. After the paper piecing is completed, traditional curved piecing is required to assemble the blocks. This quilt is fun to make and easily adapted to using strips and background fabric from your own stash if you like.

**Newsprint:** Foundation papers, templates, and Template Layout Sheets are printed on newsprint. Newsprint is lightweight and tears away from your stitches without damaging the threads. This pattern has been packaged with enough papers to complete three 30" by 30" table toppers. Use the list below to sort and verify that your pattern was packaged with the correct papers. The NP-# (or TP-#) is printed along the edge of each page.

#### JNQ00275B005: Flying Geese

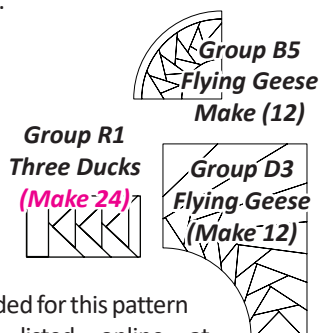
- NP 881: 2 Pages

#### JNQ00275D003: Flying Geese

- NP 877: 2 Pages
- TP 695: 1 Pages

#### JNQ12X3002: Three Ducks

- NP 888: 2 Pages



**Corrections:** If corrections are needed for this pattern after publication, they will be listed online at [www.quiltworx.com](http://www.quiltworx.com). Click on Products: Corrections and scroll through the alphabetical list. Or visit the pattern page under Products to see if there is a "Corrections" list in the right column. Check the print date on the back of this pattern. If the corrections are dated before your print date, your pattern is up to date! If there are no corrections listed, no errors have been identified! If you run across something you think may be an error, please let us know and we will either post a correction or clarify the issue for you. To quickly access the pattern page, scan the code at the bottom of the first column.



### SUPPLY LIST

**General Supply List:** Steam iron, ironing board, large size cutting board, 6" by 24" ruler, small scissors, rotary cutter, seam ripper, and a sewing machine with a quarter-inch foot.

**Paper Piecing Supply List:** 12" and 18" Add-A-Quarter rulers, Scotch tape, fabric glue stic, washout fabric glue pen, repositionable glue, a fold template, flower pins, large Ziploc bags, curved diamond cutting and trimming ruler, a Purple Thang, size 70 sewing needles, and a high-quality cotton thread. Other handy items used to keep your templates, fabrics, and papers organized are paper clips and binder clips.

**NOTE - Taking Workshops:** If you are taking a class from one of our Certified Shops or Instructors please use the class handout and supply list that they provide for their classes.

### DEFINITION COMMON TOOLS & TERMS

**Purple Thang:** This is a small plastic tool used like a stiletto that does not poke through the fabric and helps guide the fabric between the presser foot and feed dogs when sewing over several layers of stacked seams.

**Add-A-Quarter Ruler:** A small ruler with a quarter-inch lip on the bottom side used to trim the quarter-inch seams for Foundation Paper piecing. These can be purchased in three (3) sizes: 6", 12", and 18" rulers. I recommend the 12" & 18" rulers for this pattern.

**Washout Fabric Glue Stic, Repositionable Glue, and Glue Pen:** I use a water soluble glue stic to adhere the first piece of fabric to the back side of the foundation paper. Repositionable glue helps secure templates to fabric during cutting, while still being able to easily move and remove them without leaving a residue. We use the glue pen to temporarily glue the raw edges together before sewing any long straight or curved seams.

**Flower Pins:** Flower pins are a long pin with a flat flower glued to the head of each pin. The flower is flat so the paper can easily be folded back over the pin and still lie flat.

**Fold Template:** A flat piece of template plastic used as a straight edge while folding back the foundation papers just before trimming with the Add-A-Quarter ruler. A 3" by 12" piece of template plastic should be cut to use with the 12" Add-A-Quarter. A 3-1/2" by 18" piece is cut for the 18" ruler.

**Sewing Lines on the Foundation Papers:** You will find the sew lines on each foundation unit labeled as Sew Line 1, Sew Line 2, 3, & 4. The lines are marked in chronological order.

**Dashed Lines on the Foundation Paper:** These lines are reference lines marking the edge of your 1/4" seam allowance. They are not sewing lines. The dashed lines when sewing are lined up with the raw edges on the strips.

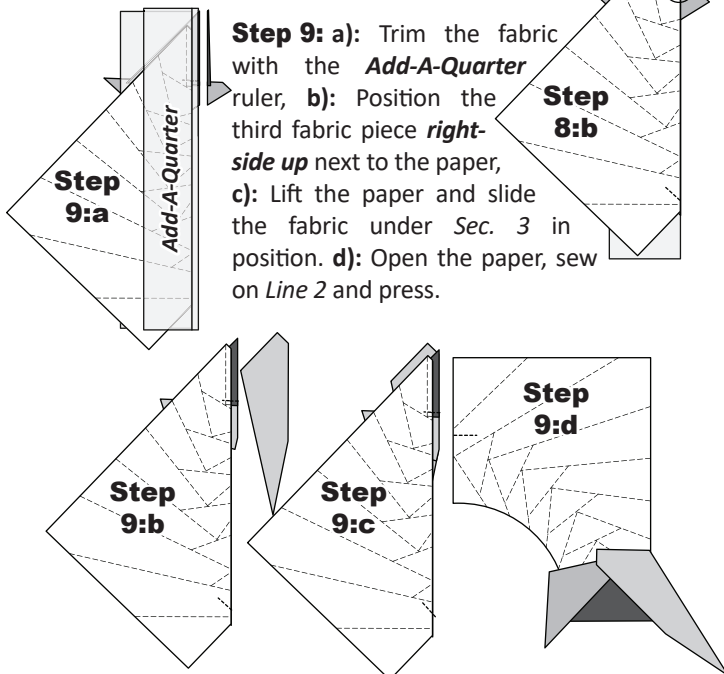
**Sew-Sides:** The sew-side on each piece of fabric is the first seam sewn onto the foundation paper. The sew-side on every piece of fabric you sew onto the foundation paper will always line up with the trimmed quarter-inch seam along the folded edge of the foundation paper.

**Right Side of the Paper:** The side with all the printing, also referred to as the front side.

**Wrong Side of the Paper:** The blank side with no printing, also referred to as the back side of the paper.

**Ziploc Bags:** Ziploc bags keep the Templates and Template Layout Sheets together with the Foundation Papers. After you cut your fabric for each unit, the fabrics are placed into the corresponding bags with the Foundation Papers. You will need (3) large bags, one for each Block Group to keep your foundation papers, templates, strip groups and background fabric organized for each booklet. Label them Block Group Bag B5, D3, & R1.

**b):** Fold the paper back and tear the paper along the stitches on *Line 1*. Stop tearing when you hit the fold line template.



**Step 10:** Continue adding the remaining fabrics to the foundation units. When the piecing is completed, trim the excess fabric away around the perimeter of the foundation papers. The TRP lines are not needed for this pattern. Place these pieces back into the Unit Bag #D3.

## CURVED PIECING

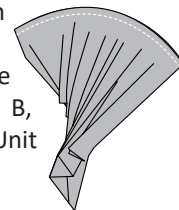
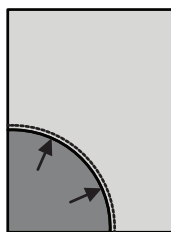
**Curved Piecing:** The D-Block Groups are joined with the JNQ275-B-Block Groups to complete a 9" by 12" finished rectangle. In the graphic to the left, no particular B Group is shown.

**Removing Paper:** The foundation papers are removed from Unit D3. It is okay to leave the papers on Unit B to help stabilize the B-Units when sewing the curved seam.

**Step 1:** Unit D3 is sewn onto the B-Unit. Position the units on your table facing *right-side up*. The pieces are joined with *right-sides-together*. Match and pin the first edge, weaving the pin through both units along the sides to hold the edges together.

**Step 2:** Match and pin the opposite side, then pleat the fabric along the bottom edges to minimize the ruffling. The raw edges are match and glued along the curved edge to keep the fabrics from slipping in the sewing process.

**Step 3:** A quarter-inch seam is sewn along the curved edge. The sewing begins at the left edge with Unit D3 on top. When the piecing is completed remove the foundation paper under Unit B, then press the seams towards Unit D3.



## Chapter 3

# Three Ducks

## Fireworks Mixers JNQ12x3-002

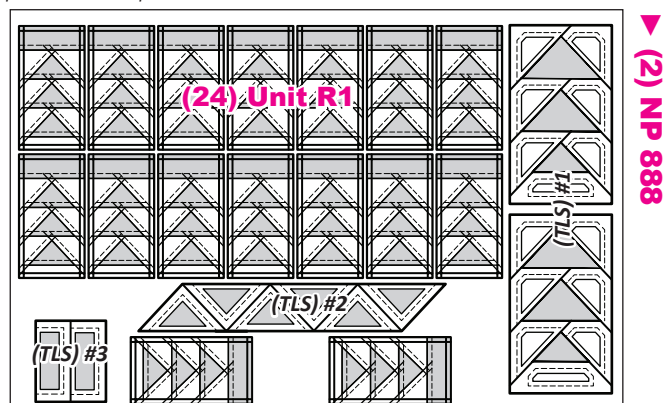
### GROUP R1: THREE DUCKS INSTRUCTIONS

**Ziploc Storage Bags:** You will need (1) large bag to complete the organization for these instructions. Label the bag as follows to stay organized while cutting the Foundation Units and Templates. *This package includes (32) Foundation Units but you will only need (24).* You can set (8) units aside, along with (2) TLS #1, (and preserve Temps from TLS #3 and #2 after you cut for the pattern) if you would like to reserve these for other projects (see Page 15).

- Block Group Bag R1: (24) Unit R1 Foundation Papers and associated Templates.

### ► Preparing Foundation Papers & Templates:

Cut out (24) Unit R1 (you will have additional units) Foundation Papers and place in Group Bag R1 along with (2) of each Template Layout Sheets #1 to #3 on [NP 888]. Unit R1 foundation papers, (TLS), and Bag #s are referenced on the newsprint graphic that follows. \*Refer back to General Information under Foundation Papers and Templates for instructions on how to prepare your foundation papers and templates.



### ► Color Layout:

**NOTE - Front-side Graphic:** The color layout shown matches the layout if you looked at the front side of the quilt. Although it is the same regardless of front or back-side view.



## Unit R1 Unit Chart: (12) Units

| GROUP-R1<br>FABRIC #          | YARDAGE INCH     | FABRIC<br>SWATCH |
|-------------------------------|------------------|------------------|
| Fabric R1<br>Unit R1 TLS #1   | 34-1/2" or 1 Yd  | Fabric Swatch    |
| Fabric R2:a<br>Unit R1 TLS #2 | 5" or 1/4 Yd     | Fabric Swatch    |
| Fabric R2:b<br>Unit R1 TLS #2 | 5" or 1/4 Yd     | Fabric Swatch    |
| Fabric R2:c<br>Unit R1 TLS #2 | 5" or 1/4 Yd     | Fabric Swatch    |
| Fabric R2:d<br>Unit R1 TLS #2 | 5" or 1/4 Yd     | Fabric Swatch    |
| Fabric R3:a<br>Unit R1 TLS #3 | 4-3/4" or 1/4 yd | Fabric Swatch    |
| Fabric R3:b<br>Unit R1 TLS #3 | 4-3/4" or 1/4 yd | Fabric Swatch    |
| Fabric R3:c<br>Unit R1 TLS #3 | 4-3/4" or 1/4 yd | Fabric Swatch    |
| Fabric R3:d<br>Unit R1 TLS #3 | 4-3/4" or 1/4 yd | Fabric Swatch    |

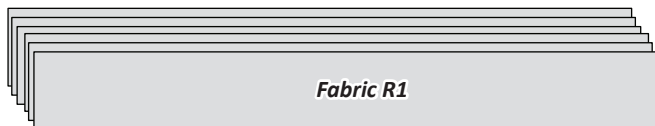
### ► Fabric and Block Information:

The *Unit Chart* includes yardage, fabric numbers, and a reference to the Fabrics #s assigned to the (TLS's) for Unit R1. There is (1) fabric used for the backgrounds. There are (4) different fabrics used for the sashing strips and (4) for the Geese. So, Fabrics R1 is used for the backgrounds. R3:a to R3:d are used for the sashing strips. R2:a to R2:d are used for the Geese. You can choose to do this however you like, however, the cutting instructions will follow the cover quilt.

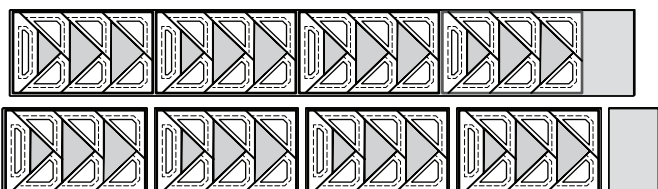
## CUTTING INSTRUCTIONS

### ► Fabric R1: (TLS) #1

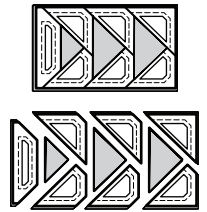
**Step 1:** Cut (6) 5-3/4" x 42" strips from Fabric R1 and stack facing *right-side-up*.



**Step 2:** *Unit R1, Template Layout Sheet #1* is used to sub-cut (4) stacks of (6) pieces from the strips matching the size and shape of the (TLS) for a total of (24) pieces. The TLSs will need to be repositioned to cut each of the stacks.

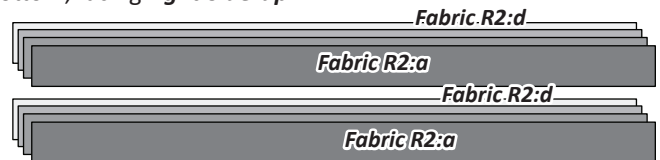


**Step 3:** To complete the cutting, re-stack the piles, by fabric. You will have (12) pieces of the same fabric beneath (2) TLS. Then, slice through the paper and fabric on each Cut Line. Clip the fabric stacks with the templates on top together and discard the scrap sections. Place into Bag #R1.

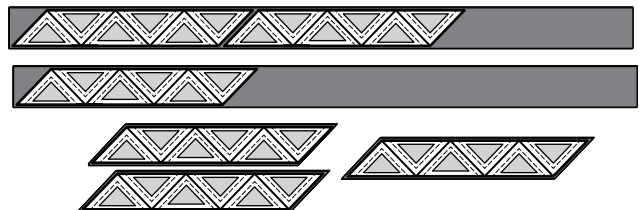


### ► Fabric R2:a to R2:d: (TLS) #2

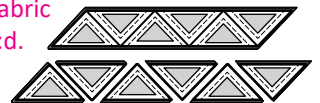
**Step 1:** Cut (2) 2-1/2" x 42" strips from each Fabric R2:a to R2:d. The strips are stacked into (2) stacks of (4) pieces, each stack should have (1) R2:a to R2:d, with R2:a on top to R2:d on the bottom, facing *right-side-up*.



**Step 2:** *Unit R2, Template Layout Sheet #2* is used to sub-cut (2) pieces matching the size and shape of the (TLS) from one strip stack and (1) piece matching the size and shape of the (TLS) from the other stack. Reuse the TLS to make the initial cuts from each stack.



**Step 3:** Re-stack the pieces into (1) stack of fabric. Place the (3) R2:a fabrics on top, then (3) R2:b pieces, then (3) R2:c, and end with (3) R2:d on the bottom. *Cut apart the templates and fabrics beneath on each cut line to cut the geese apart. Then, restack into (3) stacks with (6) fabric :a, (6) fabric :b, (6) fabric :c, and (6) fabric :d. Without disturbing the order of the fabrics, place the clipped stacks into Bag #R1.*



### ► Fabric R3:a to R3:d: (TLS) #3

**Step 1:** Cut (1) 4-3/4" x 42" strip from Fabric R3:a to R3:d. The strips are stacked facing *right-side-up*. Fabric R3:d is stacked on the bottom, working in reverse alpha-numeric order to R3:a on the top.



**Step 2:** Use *Unit R1, Template Layout Sheet #3* to cut (3) stacks of the (4) fabrics, matching the size and shape of each TLS.



**Step 3:** Restack the pieces, with (3) R3:a fabric pieces on top, then (3) R3:b, then (3) R3:c, then (3) R3:d on the bottom. Slice the stacks apart on the cut line. Without disturbing the order, clip these stacks together and place in Bag #R1.

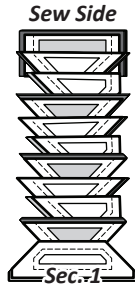




## STACKING: UNIT R1

**Instructions for Chain Piecing:** Before you start chain piecing check the color order of the fabric pieces beneath each template. Make sure that you've sorted everything so that the same fabrics are beneath each Template.

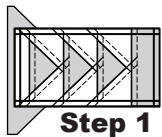
**Stacking:** Position the templates and fabric pieces facing right-side up, with the sew-sides aligned at the top. Sec. 1 does not have a sew side. The pieces are then stacked in reverse order starting with the largest # on the bottom finishing with Sec. 1 on top. Make sure that the geese and the accent strip fabrics are in the correct order before beginning to sew. **Each should have (6) :a fabrics on top, then (6) :b fabrics, then (6) :c fabrics, and finally, the (6) :d fabrics on the bottom.**



**Labeling your Papers:** With (24) units, and every (6) units switching colors, it might be helpful to number the papers to make sure you stay in order. Number them 1 to 24, then add your fabric pieces in order, and place them back in order each time you add a new section. A small swatch of fabric glued on every third unit with the next set of colors (:a, then :b, then :c, then :d), will help remind you to double check that you have switched fabrics properly with each new set of blocks.

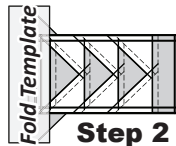
## FOUNDATION PAPER PIECING: UNIT R1

**NOTE - Tracing the Dashed Lines:** Optional. Number your papers and stack in reverse order.

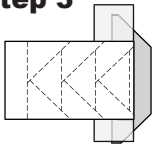


**Step 1:** The first piece of fabric is placed **wrong-side up** on your table. Lift the foundation paper, and slide the fabric under Sec. 1. Glue is used to adhere the fabric to the backside of the paper. Repeat **Step 1** for each foundation unit.

**Step 2:** Place the fold template over the top of Sec. 1, lining the edge up with the solid black line marked Line 1.

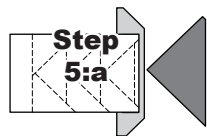
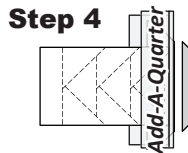


**Step 3**



**Step 3:** Fold the paper back over the top of the fold template.

**Step 4:** Place the **Add-A-Quarter** ruler next to the folded paper and trim the fabric with your rotary cutter.



**Step 5:a**

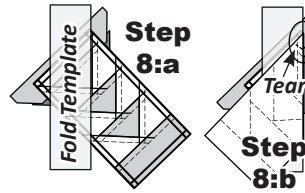
**Step 5:b**

**Step 5: a)** Place the fabric piece for Sec. 2, **right-side up** next to the folded back paper. **b)** Lift the paper, slide the fabric under Sec. 1, and line the sew side up with the trimmed seam allowance. Repeat **Steps 1–5** for each foundation paper before moving onto **Step 6**.

**Step 6:** Sew on Line 1. The stitches should start and stop about 1/8" past the beginning and the end of each stitch line. Complete the sewing on each unit before moving onto the next step.

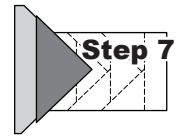
**Step 7:** Loosen the glue under Sec. 1, then press the fabric pieces open on the backside of each paper.

**Step 8: a)** Position the fold template over the top of Sections 1 and 2, lining the edge up with Line 2. **b)** Fold the paper back and tear the paper along the stitches on Line 1. Stop tearing when you hit the fold template.



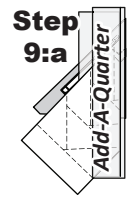
**Step 8:a**

**Step 8:b**

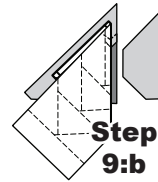


**Step 7**

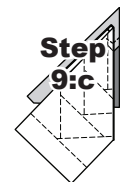
**Step 9: a)** Trim the fabric with the **Add-A-Quarter** ruler, **b)** Position the third fabric piece **right-side up** next to the paper, **c)** Lift the paper and slide the fabric under Sec. 3 in position. **d)** Open the paper, sew on Line 2 and press.



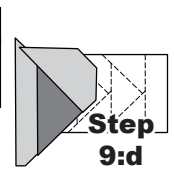
**Step 9:a**



**Step 9:b**

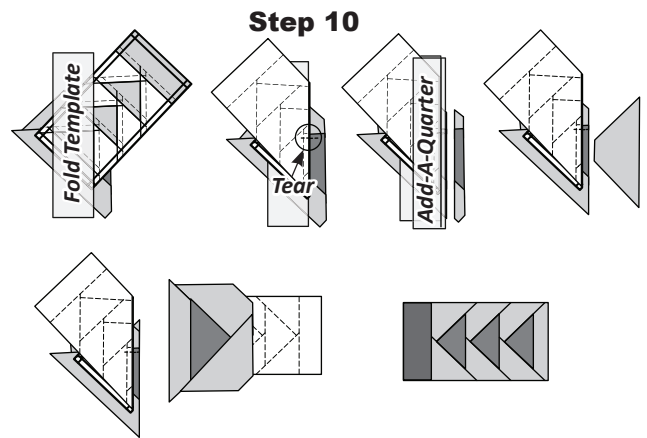


**Step 9:c**



**Step 9:d**

**Step 10:** Continue adding the remaining fabrics to the foundation units. When the piecing is completed, trim the excess fabric away around the perimeter of the foundation papers. Place these pieces back into the Unit Bag #R1.



**Step 10**

## TABLE TOPPER BORDERS

You will need 14-1/2" of fabric to cut your border for each Table Topper. On the cover, we chose (3) different fabrics. Reference the assembly graphics to the right for which Table Toppers to sew each border fabric.

### Fabric A1: Borders

| FABRIC #           | YARDAGE INCH | FABRIC SWATCH |
|--------------------|--------------|---------------|
| <u>Fabric A1:a</u> | 14-1/2"      | Fabric Swatch |
| <u>Fabric A1:b</u> | 14-1/2"      | Fabric Swatch |
| <u>Fabric A1:c</u> | 14-1/2"      | Fabric Swatch |

# Suncatcher Table Toppers

**Quilt Size: (3) 30" Square**

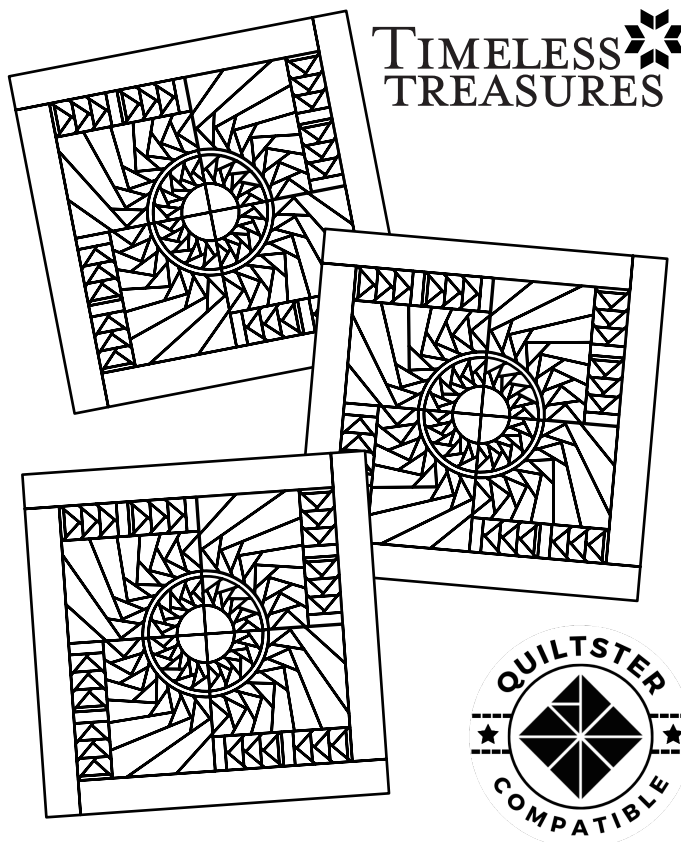
JNQ00275P18

JNQ00275B005: Flying Geese  
NP 881: 2 Pages

JNQ00275D003: Flying Geese  
NP 877: 2 Pages  
TP 695: 1 Page

JNQ12X3002: Three Ducks  
NP 888: 2 Pages

| Fabric Reference #           | Yd(s)        | Fabric SKU                                     |
|------------------------------|--------------|--|
| B5-1:a, D3-1:e, R2:c         | 3/8          | Tonga-B8785 Turquoise                          |
| B5-1:b, D3-1:g, R2:d         | 3/8          | Tonga-B8168 Orchid                             |
| B5-3:d, D3-1:b, R3:a         | 3/8          | Tonga-B8163 Garden                             |
| A1:b, B5-2:b, R3:d           | 5/8          | Tonga-B8168 Magenta                            |
| A1:c, B5-2:c, D3-1:d, R3:b   | 3/4          | Tonga-B8162 Kelly                              |
| B5-3:b, D3-1:a               | 1/4          | Tonga-B8786 Sunrise                            |
| B5-3:c, R2:a                 | 1/4          | Tonga-B8168 Sorbet                             |
| B5-4, B5-3:a                 | 3/8          | Tonga-B8163 Rose                               |
| B5-1:c, B5-3:e, D3-1:c, R2:b | 3/8          | Tonga-B8162 Citrus                             |
| D3-1:f                       | 1/8          | Tonga-B6165 Sapphire                           |
| A1:a, B5-2:a, R3:c           | 5/8          | Tonga-B8164 Ocean                              |
| D3-2, D3-3, R1               | 3-1/8        | Tonga-B6168-Air                                |
| Batting                      | 3 Crib Packs | Hobbs 80/20 (45" x 60")                        |
| Binding                      | 7/8 Yd       | or (3) 3/8 yards cuts of your preferred colors |
| Backing                      | 3-3/4        | or (3) 1-1/4 Cuts of your preferred colors     |



## ► Quiltster Compatible

Quiltworx.com has loaded a layout for Suncatcher Table Toppers into Quiltster. This layout can be colored with your own Fabric Swatches to preview your quilt before you make it! Use Quiltster to mix and match these blocks with others to create your own unique design! To get Quiltster, visit Quiltster.com!

Visit us on:



© Copyright: August 2022

Pattern: Suncatcher Table Toppers

All rights reserved. No part of this pattern can be reproduced in any form for any commercial purpose without the expressed written permission of Judy Niemeyer Quilting. The written instructions, foundation papers, graphics, and photographs for this pattern were designed as a package for the purpose of retail sales and as a result, fall under the protection of the federal copyright laws of the United States of America. Extra materials may be obtained from local quilt shops or directly from Judy Niemeyer Quilting aka Quiltworx.com.

Quiltworx.com  
Judy Niemeyer Quilting

E-mail: info@quiltworx.com • Web: www.quiltworx.com



Print Date: 05-06-23