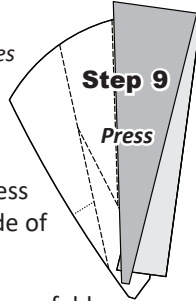


## FOUNDATION PIECING: UNITS F2

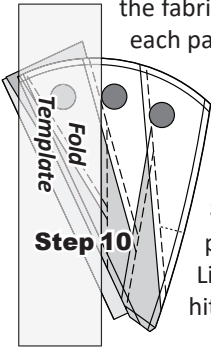
**Step 8:** Fold open the paper. Place paper side up and sew on Line 1. *Note: The sew lines are the solid lines printed on the foundation paper identified with a Line #.* The stitches should start and stop about 1/8" past the beginning and the end of each sew line. Complete the sewing on each unit before moving onto the next step.

**NOTE - Trimming the Threads:** Sewing 4 to 5 stitches past the ends of your sew lines makes it possible to cut the thread ends off each time you trim with your **Add-A-Quarter** ruler.

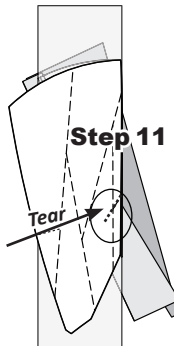
**Step 9:** Loosen the glue under Sec. 1, then press the fabric pieces open on the backside of each paper.



**Step 10:** Position the fold template over the top of Sections 1 and 2, lining the edge up with Line 2.

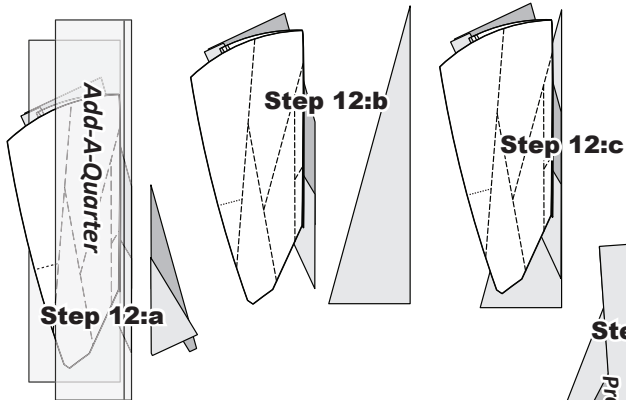


**Step 11:** Fold the paper back and tear the paper along the stitches on Line 1. Stop tearing when you hit the fold template.

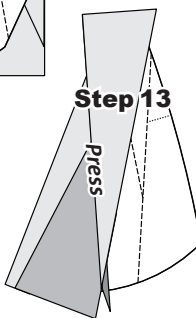


**NOTE - Tear Back the Paper:** Tearing the paper along the stitches allows the fabric to relax making it possible to place the **Add-A-Quarter** ruler along the folded edge.

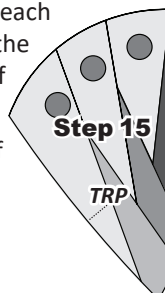
**Step 12:** a:) Trim the fabric with the **Add-A-Quarter** ruler. b:) Position the third fabric piece **right-side up** next to the paper. c:) Lift the paper and slide the fabric under Sec. 3 in position.



**Step 13:** Open the paper, sew on Line 2, and press the fabric on the backside of the paper. Continue adding the fabric pieces to each section, stopping once you complete Sec 6.



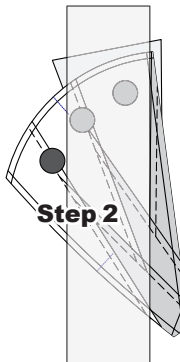
**Step 14:** When the paper piecing is completed, re-set your stitch length at 2.0 and sew the (TRP) Lines on each Foundation Unit. After the (TRP) Lines are sewn, the threads are trimmed on the front and backside of each unit.



**Step 15:** Trim the excess fabric and paper off around the perimeter of each foundation unit.

**NOTE - Tracing Dashed Lines:** To avoid making a lot of mistakes on these Units, it's a good idea to trace the dashed lines printed on the front side of the foundation paper onto the backside of the paper.

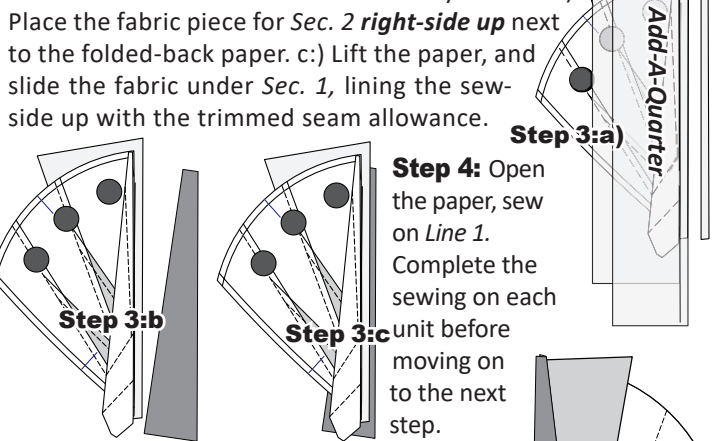
**Step 1:** Position the first piece of fabric for Sec. 1 **wrong-side up** on your table. Lift the foundation paper, and slide the fabric under Sec. 1. Glue is used to adhere the fabric to the backside of the paper. Repeat Step 1 for each foundation paper before moving on to Step 2.



**NOTE - Fabric Placement:** The wrong-side of the fabric is against the backside of the paper.

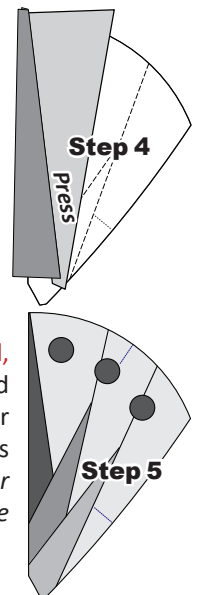
**Step 2:** Place the fold template over the top of Sec. 1, lining the edge up with the solid black line marked Line 1.

**Step 3:** a:) Fold the paper back, position the **Add-A-Quarter** ruler next to the folded-back paper, and trim the fabric with the rotary cutter. b:) Place the fabric piece for Sec. 2 **right-side up** next to the folded-back paper. c:) Lift the paper, and slide the fabric under Sec. 1, lining the sew-side up with the trimmed seam allowance.



**Step 4:** Open the paper, sew on Line 1. Complete the sewing on each unit before moving on to the next step. When the sewing is complete loosen the glue under Sec. 1, then press the fabric open on the backside of each paper under Sec 2. Continue adding the fabric pieces to each section on the foundation paper.

**Step 5:** When the paper piecing is completed, trim the excess paper and fabric off around the perimeter of the printed paper; remember to trim the Smart Corners! Place these pieces back into Bag #E2. **Note: The foundation paper is not removed until after you have glued on the applique' pieces.**





**Carnival Crown, Group-G**

**JNQ00282-G-001**

**Carnival Crown:** This booklet and chapter includes the foundation papers, template layout sheets, and instructions needed to complete the cutting and piecing for Group G:

- **Group G: Units G1 & Unit G2**

**General Block Information:** The G-Block units were designed to teach traditional curved piecing, traditional S-curve piecing, curved paper piecing with veins, and then how to transform your foundation papers into T-Templates. We have also added the dots for the applique. Template Layout Sheets are used to cut all the template pieces.

**Newsprint NP 939, TP 747, and TP 748:** The newsprint in your instructions package includes the Foundation Papers and Template Layout Sheets (TLS) required to complete the cutting and piecing instructions for both Units G1 and G2.

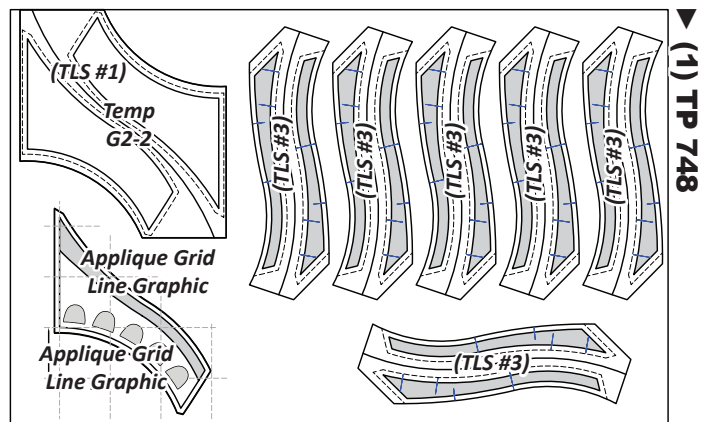
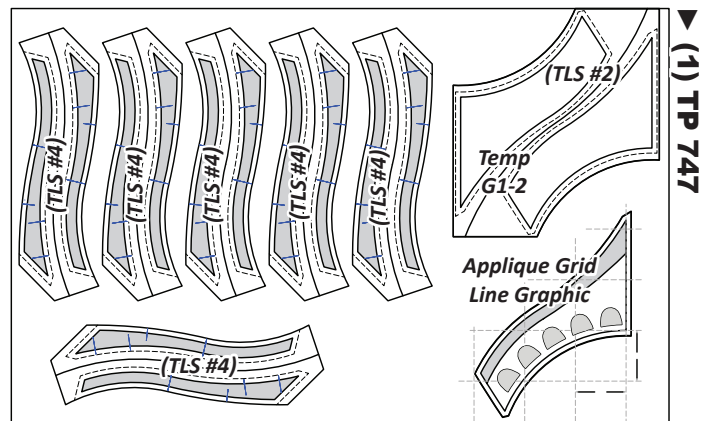
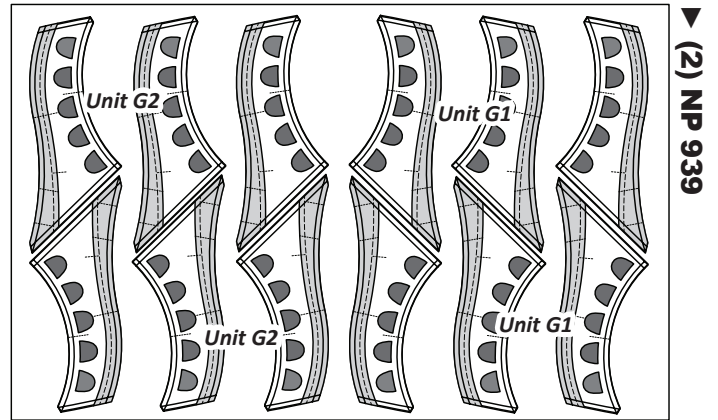
Reference Page 3 of the Introduction Booklet under **\*Foundation Papers and Templates** for instructions on how to cut out the Foundation Papers, and Template Layout Sheets in this booklet.

After the Foundation Papers and Template Layout Sheets are cut out, the papers labeled Unit G1, & G2 are placed into their associated Bag #s listed below. The Template Layout Sheets are stacked in numerical order (TLS) 1-4, then placed into a temporary bag assigned to the Group G Templates. After the templates are placed with their assigned fabrics and the template cutting is completed for each fabric, the templates and fabrics are then placed with the foundation papers into their assigned Bags.

**Ziploc Bags:** (3) large Ziploc bags are needed to keep your fabrics, templates, and papers organized. Label as follows:

- **Bag #G1: (12)** Unit G1 Foundation Papers
- **Bag #G2: (12)** Unit G2 Foundation Papers
- **Group G, Temp Bag:** (Template Layout Sheets 1-4).

**Color Options:** We have provided two color options for Units G1 & G2. The **Standard Option** requires no paper piecing. The foundation papers are transformed into T-Templates, which removes the curved veins along the top edge of each unit. The cutting instructions are designed so all (12) unit groups are made with the same fabrics. To get some variation of color using the Standard Option, you can change your background fabrics from block to block by using the Unlock setting on Quiltster.



The **Alternative 1 Color Option** is designed so all (12) unit groups are made with the same fabrics. It is easy to get some variation of color if you change your fabrics from block to block. This can be done by using the Unlock setting on Quiltster. None of the quilts on the cover were designed with the **Alternative 1 Color Option**. This option was not available until after all the cover samples were designed.

**Yardage Chart Information:** The yardage information presented in the Fabric Chart is presented for the One Color Group, where all (12) blocks look the same. If you are working with (2) or more color groups, the total yardage might change depending on how the colors are used. If you are working with (3) colors, four units are