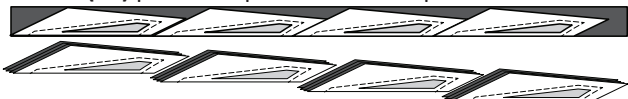


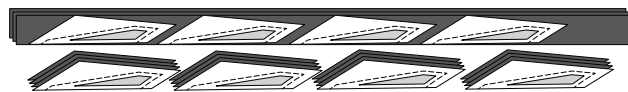
► **Fabric C4:b (TLS #4) Temp C2-3**

Step 1: Cut (3) 2" by 42" strips from Fabric C4:b. Stack the strips facing *right-side-up*. Position *Unit C2, Sec 3, Temp C2-3* onto your stack. Cut (12) pieces. Reposition the template with each cut.



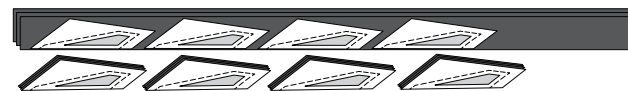
► **Fabric C4:c (TLS #4) Temp C2-5**

Step 1: Cut (3) 2" by 42" strips from Fabric C4:c. Stack the strips facing *right-side-up*. Position *Unit C2, Sec 5, Temp C2-5* onto your stack. Cut (12) pieces. Reposition the template with each cut.



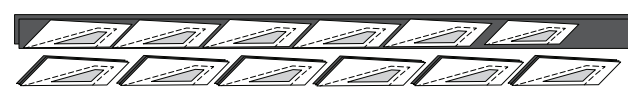
► **Fabric C4:d (TLS #4) Temp C2-7**

Step 1: Cut (3) 2-1/4" by 42" strips from Fabric C4:d. Stack the strips facing *right-side-up*. Position *Unit C2, Sec 7, Temp C2-7* onto your stack. Cut (12) pieces. Reposition the template with each cut.



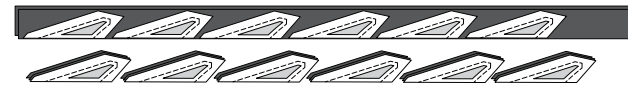
► **Fabric C4:e (TLS #4) Temp C2-9**

Step 1: Cut (2) 2" by 42" strips from Fabric C4:e. Stack the strips facing *right-side-up*. Position *Unit C2, Sec 9, Temp C2-9* onto your stack. Cut (12) pieces. Reposition the template with each cut.

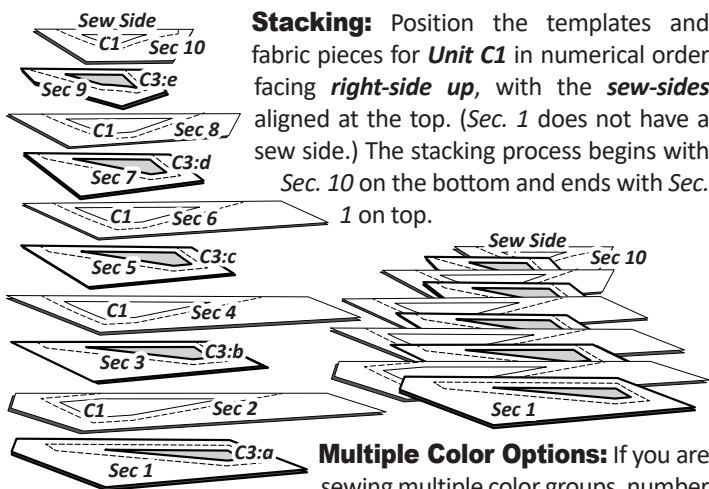


► **Fabric C4:f (TLS #4) Temp C2-11**

Step 1: Cut (2) 2" by 42" strips from Fabric C4:f. Stack the strips facing *right-side-up*. Position *Unit C2, Sec 11, Temp C4-f* onto your stack. Cut (12) pieces. Reposition the template with each cut.



STACKING: UNIT C1, BAG #C1



Stacking: Position the templates and fabric pieces for *Unit C1* in numerical order facing *right-side up*, with the *sew-sides* aligned at the top. (Sec. 1 does not have a sew side.) The stacking process begins with Sec. 10 on the bottom and ends with Sec. 1 on top.

Multiple Color Options: If you are sewing multiple color groups, number your foundation units 1–12 on both sides of the paper on Sec. 11 to match the sewing order of your fabric colors. Your fabrics are stacked in the sewing order, so each time you begin adding a new round of

fabrics to the foundation papers you will pair paper #1 with the first color in your stack.

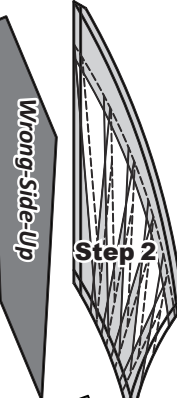
FOUNDATION PAPER PIECING: UNIT C1

Things you should know: The foundation paper piecing starts with Sec 1 and ends with Sec 10 on Unit C1. The vein is sewn onto Sec 11 using our Curved Paper Piecing technique. When you get to Sec 11 stop, read through the instructions, then proceed to follow each step in the order written.



NOTE - Tracing the Dashed Lines: Flip the foundation paper over and trace the dashed lines printed on the front side of the foundation paper, onto the backside of the paper.

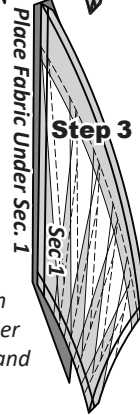
Step 1: Find Sec. 1 on the foundation paper. Place a small amount of fabric glue on the *backside* of the paper under Sec. 1.



Step 2: Position the first piece of fabric for Sec. 1 *wrong-side-up* on your table.



Step 3: Lift the foundation paper, and slide the fabric under Sec. 1. The glue is used to adhere the fabric to the backside of the paper. Repeat Steps 1 and 2 for each foundation unit.

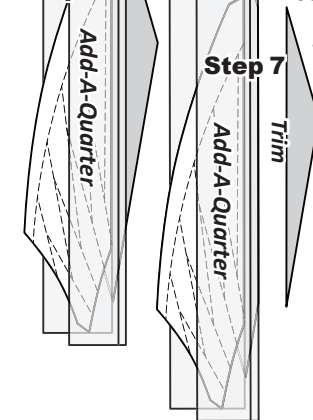


NOTE - If you are working with multiple colors make sure to pair fabric :a with Paper #1, Fabric :b with paper #2, Fabric :c with paper #3 and etc.

Step 4: Place the fold template over the top of Sec. 1. Line the edge up with the solid black line marked Line 1.

Step 5: Fold the paper back over the top of the fold template.

Step 6: Place the *Add-A-Quarter* ruler next to the folded back section lip-side down and trim the fabric with your rotary cutter. This leaves a quarter-inch seam allowance which is lined up with the sew-side on the next piece of fabric.



Step 7: Place the fabric piece for Sec. 2, *right-side up* next to the folded back paper.