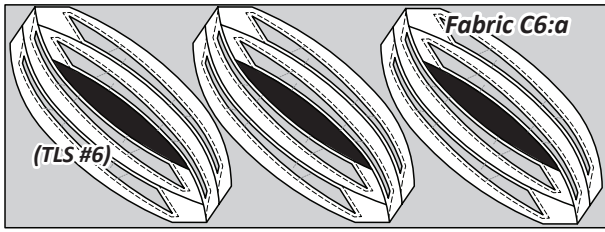
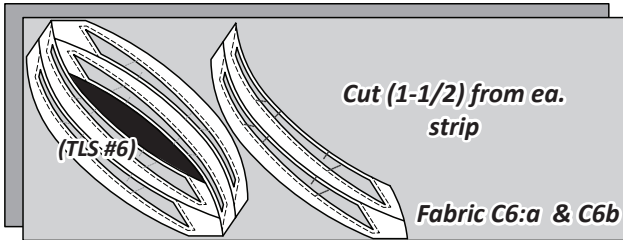


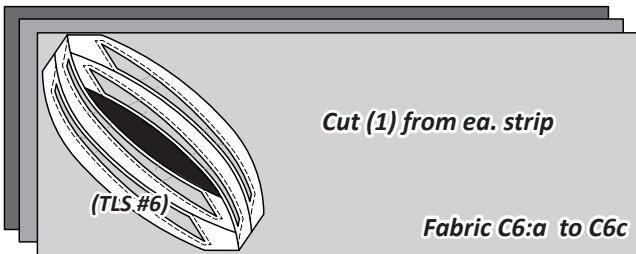
- **One Color Group:** Cut (1) 15-1/2" by 42" strip from *Fabric C6*. Cut (3) from each strip.



- **Two Color Groups:** Cut (1) 15-1/2" by 42" strip from ea. *Fabric C6:a* and *C6:b*.



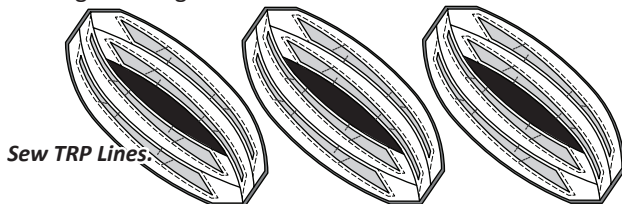
- **Three Color Groups:** Cut (1) 15-1/2" by 42" strip from ea. *Fabric C6:a* to *C6:c*.



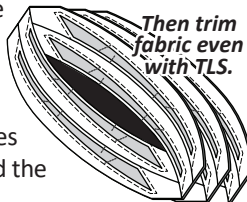
- **Six and Twelve Color Groups:** Reference the Rainbow cutting option in the introduction booklet to minimize fabric waste. Realize that if you aren't able to find another color to share this cut with, you may end up getting a half yard of fabric for each fabric you choose.

Step 1: Place the fabric strip(s) facing right-side-up. **Position (6) of Unit C2 Template Layout Sheet #6** onto the fabric strips. The backside of each layout sheet is placed against the right-side of the fabric and secured with repositionable glue. If you chose more than one color group, refer to the previous diagrams for each color group for how many (TLS) to place on each strip.

Step 2: Cut around each layout sheet leaving about 1/8" of excess fabric along each edge.



Step 3: Set your stitch length at 2.0 and sew the (TRP) Lines on each layout sheet. After the (TRP) lines are sewn, trim the threads on the front and backside of each layout sheet. (The TRP lines are needed when curved piecing, so don't skip this step.) After the (TRP) lines are sewn, trim the excess fabric off around the perimeter of each layout sheet.



Step 4: Cut the individual template sections apart on Cut Lines 1 and 2. Discard the scrap in the middle of each pair of templates. (Note: Leave the template paper attached to each fabric piece until told to remove when assembling the units.)

Step 5: If you have chosen to use more than one color group, stack the template numbers in reverse alphabetical order starting with the latest alphabetical fabric on the bottom, ending with *Fabric C6:a* on top. Clip the template/fabric pieces together and place into Bag #C2 with their assigned foundation units.

GROUP C: ALTERNATIVE 1 CUTTING INSTRUCTIONS

Fabric Chart: The yardages on the fabric chart are assigned to the spike sections on Unit C1 and C2. Fabric C3:a to C3:e are assigned to the spikes for Unit C1 (TLS) #3. Fabric C4:a, to C4:f are assigned to the spikes for Unit C2 (TLS) #4. A graphic showing how the fabric references are laid out on each unit is shown on the next page. Also, note that if you use this alternative and unlock the blocks in Quiltster, you will have to use the following to differentiate between the different color groups. As an example, a 2 Color group option would look as follows:, C3:a(1), C3:a(2), then C3:b(2), C3:b(2), etc.

| Units C1 & C2 Yardage: Make (12) Each | | |
|--|-----------------------|----------------|
| GROUP-C FABRIC # | YARDAGE INCH | ASSIGNED COLOR |
| <u>Fabric C3:a</u> Unit C1 (TLS #3, Temp C1-1) | 3/8 yd or (7-1/2") | FABRIC SWATCH |
| <u>Fabric C3:b</u> Unit C1 (TLS #3, Temp C1-3) | 1/4 yd or (6") | FABRIC SWATCH |
| <u>Fabric C3:c</u> Unit C1 (TLS #3, Temp C1-5) | 1/4 yd or (6") | FABRIC SWATCH |
| <u>Fabric C3:d</u> Unit C1 (TLS #3, Temp C1-7) | 1/4 yd or (6-3/4") | FABRIC SWATCH |
| <u>Fabric C3:e</u> Unit C1 (TLS #3, Temp C1-9) | 1/8 yd or (4") | FABRIC SWATCH |
| <u>Fabric C4:a</u> Unit C2 (TLS #4, Temp C2-2) | 3/8 yd or (10") | FABRIC SWATCH |
| <u>Fabric C4:b</u> Unit C2 (TLS #4, Temp C2-3) | 1/4 yd or (6") | FABRIC SWATCH |
| <u>Fabric C4:c</u> Unit C2 (TLS #4, Temp C2-5) | 1/4 yd or (6") | FABRIC SWATCH |
| <u>Fabric C4:d</u> Unit C2 (TLS #4, Temp C2-7) | 1/4 yd or (6-3/4") | FABRIC SWATCH |
| <u>Fabric C4:e</u> Unit C2 (TLS #4, Temp C2-9) | 1/8 yd or (4") | FABRIC SWATCH |
| <u>Fabric C4:f</u> Unit C2 (TLS #4, Temp C2-11) | 1/8 yd or (4") | FABRIC SWATCH |