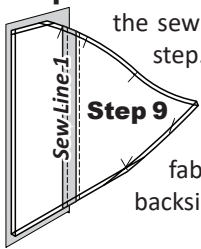
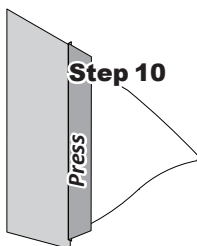


Step 9: Fold the paper back open and sew on Line 1. Complete the sewing on each unit before moving onto the next step.

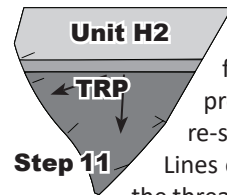


Step 9

Step 10: Loosen the glue under Sec. 1, then press the fabric pieces open on the backside of each paper.



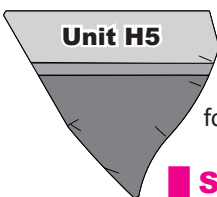
Step 10



Step 11

Step 11: Repeat the process to add the fabric for Sec 3. When the paper piecing is done, press the fabric on the backside of the paper, re-set your stitch length at 2.0 and sew the (TRP) Lines on each unit. After the (TRP) Lines are sewn, the threads are trimmed on the front side of the fabric and backside of the paper. The excess fabric is trimmed off on the solid line around the perimeter of the foundation paper.

FOUNDATION PAPER PIECING: UNITS H5

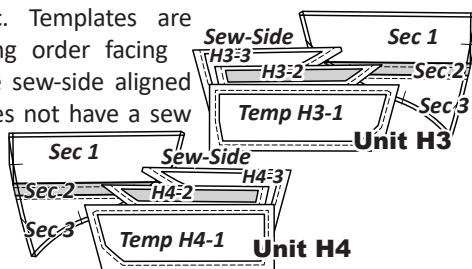


Unit H5

Units H5: The foundation papers for Unit H5 are mirror images of Unit H2. The previous Steps 1-11 are repeated to complete the foundation piecing. Graphics are not provide.

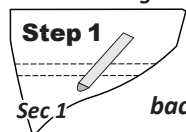
STACK UNIT H3 & H4, BAG #H3

Stacking: The Sec. Templates are stacked in the sewing order facing right-side-up with the sew-side aligned at the top. Sec. 1 does not have a sew side. The stacking process begins with the largest Sec. #3 on the bottom.



FOUNDATION PAPER PIECING: UNITS H3

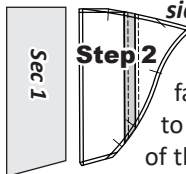
NOTE - Tracing the Dashed Lines: Optional.



Step 1

Step 1: Find Sec. 1 on the foundation paper. Place a small amount of fabric glue on the **backside** of the paper under Sec. 1.

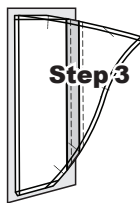
Step 2: Position the first piece of fabric for Sec. 1 **wrong-side-up** on your table.



Sec 1

Step 2

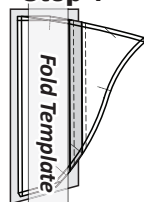
Step 3: Lift the foundation paper, slide the fabric under Sec. 1. The glue is used to adhere the fabric to the backside of the paper. Repeat Steps 1 and 2 for each foundation unit.



Step 3

Step 4

Step 4: Place the fold template over the top of Sec. 1. Line the edge up with the solid black line marked Line 1.



Fold Template

Step 5: Fold the paper back over the top of the fold template.



Step 5

Step 6: Place the **Add-A-Quarter** ruler next to the folded back section lip-side down and trim the fabric with your rotary cutter. This leaves a quarter-inch seam allowance which is lined up with the sew-side on the next piece of fabric.



Step 7

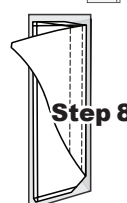
Step 7: Place the fabric piece for Sec. 2, **right-side up** next to the folded back paper.

Step 8: Lift the foundation paper and slide the fabric under Sec. 2. Line the sew-side up with the trimmed seam allowance. Make sure the fabric extends beyond the boundaries of the dashed lines for Sec. 2. Repeat **Steps 3-7** for each foundation paper before moving onto Step 8.



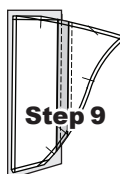
Step 6

Add-A-Quarter



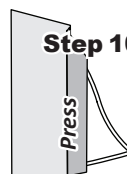
Step 8

Step 9: Fold the paper back open and sew on Line 1. Complete the sewing on each unit before moving onto the next step.



Step 9

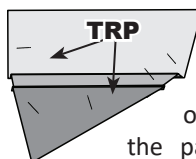
Step 10: Loosen the glue under Sec. 1, then press the fabric pieces open on the backside of each paper.



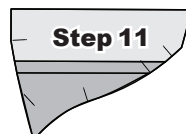
Step 10

Press

Step 11: Repeat the process to add the fabric for Sec 3. When the paper piecing is done, press the fabric on the backside of the paper, re-set your stitch length at 2.0 and sew the (TRP) Lines on each unit. After the (TRP) Lines are sewn, the threads are trimmed on the front side of the fabric and backside of the paper. The excess fabric is trimmed off on the solid line around the perimeter of the foundation paper.



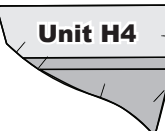
TRP



Step 11

FOUNDATION PAPER PIECING: UNITS H4

Units H5: The foundation papers for Unit H4 are mirror images of Unit H3. The previous Steps 1-10 are repeated to complete the foundation piecing. Graphics are not provide.



Unit H4

BLOCK ASSEMBLY INSTRUCTIONS

General Pressing Information: Units H1, H2, H5 and H6 were designed with opposing seams to reduce bulk when using heavier cotton fabrics. If you are working with lighter weigh fabrics you may want to consider repressing those seams to provide you with stacked seams. Stacked seams are easier to work with if you are planning on quilting in the ditch as a quilting option.

Removing Paper: The foundation paper is not removed from any of the border units until you are ready to assemble the Units with the Block groups from Booklet 2.

Sewing the Block Groups: All the assembly instructions for the Carnival Flower Wall Quilt are located in Booklet One 'Carnival Flower Wall introduction Booklet'.