

Step 2: Unthread your machine and sew through the paper and the stack of fabrics with just the needle, marking the registration lines on each fabric.

Step 3: Re-thread the machine, and set the stitch length = 2.5 or greater. Sew on the lines marked by the needle-punching.

NOTE - Marking Pencil Option: Double check the needle punch holes against the T-Template before sewing each piece. If the needle punch holes do not match because the pieces weren't perfectly aligned when punched, you may need to use a marking pencil and mark the registration lines on the backside of the fabric.

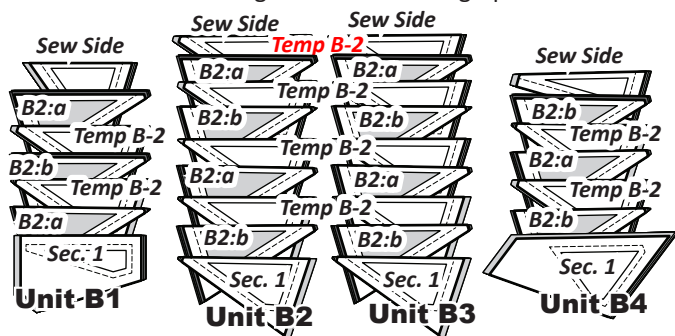
NOTE - Quilt Size: If your quilt does not have border extensions, you do not need to add the TRP lines along the outside edge.

Step 4: Trim the threads back to about 1/2". Repeat this process for each of the cut template pieces. Then, clip the fabric pieces to the appropriate T-Templates and place back into Bag #B5.

STACKING: UNITS B1 TO B4

The template pieces are stacked in the order you sew them to the paper. Position the templates and fabric pieces in numerical order facing **right-side up**, with the **sew-sides** aligned at the top. Sec. 1 does not have a sew side.

Stacking: The stacking process begins with the largest Sec. # on the bottom. The pieces are stacked in reverse order finishing with Sec. 1 on top. Pay attention to your Fabric B2:a and B2:b stacks to make sure they alternate. Also, you will have several Temp B-2 stacks that don't have section numbers on them. They are the same pieces for each section, so simply put one stack of Temp B-2 included in each of the bags as shown in the graphic.



PAPER PIECING: UNITS B1 TO B4

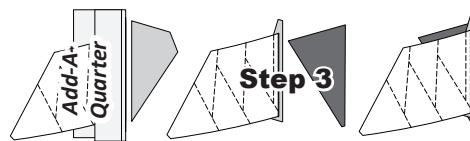
NOTE - Tracing the Dashed Lines: Place the foundation paper onto a light table. Flip the foundation paper over and trace the dashed lines printed on the front side onto the backside of the paper.

Step 1: The first piece of fabric is placed **wrong-side-up** on your table. Lift the foundation paper, slide the fabric under Sec. 1. Glue is used to adhere the fabric to the backside of the paper. Repeat Step 1 for each foundation unit.

Step 2: Place the fold template over the top of Sec. 1 and line the edge up with the solid line marked Line 1. Fold the paper back over the top of the fold template.

Step 3: Place the **Add-A-Quarter** ruler next to the folded paper and trim the fabric with your rotary cutter. Then, place the fabric

piece for Sec. 2, **right-side up** next to the folded back paper. Lift the paper, and slide the fabric under Sec. 1, line the sew-side up with the trimmed seam allowance. Repeat **Steps 1-3** for each foundation paper before moving onto Step 4.



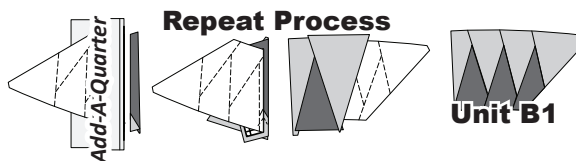
Step 4: Sew on Line 1. The stitches should start and stop about 1/8" past the beginning and the end of each stitch line. Complete the sewing on each Unit before moving onto the next step.

NOTE - Trimming the Threads: Sew past the ends of your sew line to easily cut the thread ends off each time you trim with your Add-A-Quarter ruler.

Step 5: Loosen the glue under Sec. 2, then press the fabric pieces open on the backside of each paper.

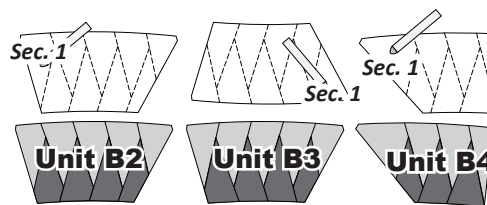
Step 6: Position the fold template over the top of Sections 1 and 2, lining the edge up with Line 2. Fold the paper back and tear the paper along the stitches on Line 1. Stop tearing when you hit the fold template.

Repeat Process: Trim the fabric with the **Add-A-Quarter** ruler. Position the third fabric piece **right-side-up** next to the paper. Lift the paper and slide the fabric under Sec. 3 in position. Open the paper, sew on Line 2 and press.



Completing the Unit: Trim around the foundation paper on the dark solid lines. Remove the paper at this time, just make sure you keep your units grouped so you don't mix them up before assembly.

Units B2, B3, & B4: Repeat this piecing process with Units B2, B3, and B4.



CURVED PIECING

Step 1: Reference the graphics below for which T-Templates to sew to which units.

Step 2: As an example, match and pin the **Unit B2** to the **T-Temp B3L, right-sides-together**. A glue pen helps secure the edges of the fabrics along the seam allowance. Use the Smart Corners to position the fabric piece perfectly.

Step 3: Watch for puckers and use steam if needed to get the pieces to lie flat before sewing along the seam allowance.