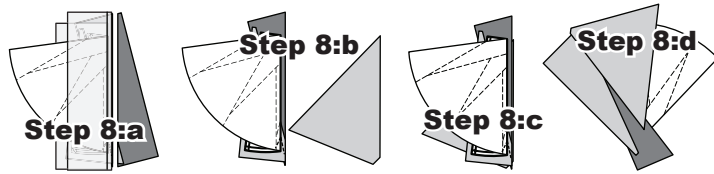


**Step 8:** a): Trim the fabric with the *Add-A-Quarter* ruler, b): Position the third fabric piece *right-side up* next to the paper, c): Lift the paper and slide the fabric under *Sec. 3* in position, and d): Open the paper, sew on *Line 2* and press.



Sew the remaining fabrics onto the foundation units. When the piecing is completed trim the excess fabric away around the perimeter of each foundation unit.



## FOUNDATION PAPER PIECING: UNIT B1-2

Repeating the paper piecing Steps.

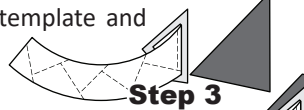


**Tracing** NOTE - Tracing the Dashed Lines: Optional



**Step 1:** The first piece of fabric is placed *wrong-side up* under *Sec. 1*. Glue is used to adhere the fabric to the back side of the paper.

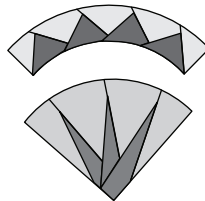
**Step 2:** Line the fold template edge up with *Line 1*. Fold the paper back over the top of the fold template and trim a quarter-inch seam allowance.



**Step 3:** Place the fabric piece for *Sec. 2*, *right-side up* next to the folded back paper. Lift the paper, and slide the fabric under *Sec. 1*.

**Unit B1-2**

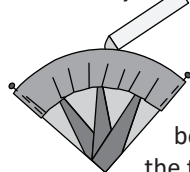
**Step 4:** Open the paper and sew on *Line 1*. After the piecing is completed, trim the excess fabric off around the perimeter of each foundation unit.



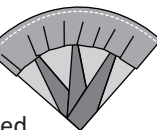
## CURVED PIECING

**Removing Paper:** Remove the paper from Unit B1-2 just prior to starting the curved piecing. The paper is not removed from Unit B1-1. The paper is used as a stabilizer when sewing the curved seam. After the curved piecing is completed, the paper is removed from Unit B1-1.

NOTE - Set your machine to sew 1/4" seams!



**Step 1:** Position Unit B1-2 on top of Unit B1-1, *right-sides together*. Match and secure both sides, then glue the raw edges together along the top edge of the curved unit.



**Step 2:** Unit B1-1 is placed next to the feed dogs at your machine, placing Unit B1-2 on the top. Start sewing at the left edge and continue the seam to the opposite side keeping the edges aligned as you sew. When the curved piecing is complete, press the seam toward Unit B1-2. At this time place the Unit blocks back into Block Group Bag B1.



## T-TEMPLATES AND BORDER CUTTING INSTRUCTIONS

<i>Background T-Templates &amp; Borders</i>		
T-TEMPLATES FABRIC #	YARDAGE INCH	FABRIC SWATCH
Fabric A1:a T-Template A1	1/8 yd or (3-3/4") (1) 3-3/4" Strip	Fabric Swatch
Fabric A1:b T-Template A1	1/8 yd or (3-3/4") (1) 3-3/4" Strip	Fabric Swatch
Fabric A1:c T-Template A1	1/8 yd or (3-3/4") (1) 3-3/4" Strip	Fabric Swatch
Fabric A1:d T-Template A1	1/8 yd or (3-3/4") (1) 3-3/4" Strip	Fabric Swatch
Fabric A2 Table Runner border	1-3/4 yd (63") Selvage Cut (Excess can be used for Binding or for Borders on Table Runners if desired)	Fabric Swatch
Fabric A3:a Placemat Border	1/8 Yd (4") (1) 4" Strip	Fabric Swatch
Fabric A3:b Placemat Border	1/8 Yd (4") (1) 4" Strip	Fabric Swatch
Fabric A3:c Placemat Border	1/8 Yd (4") (1) 4" Strip	Fabric Swatch
Fabric A3:d Placemat Border	1/8 Yd (4") (1) 4" Strip	Fabric Swatch
Fabric BT1:a T-Template C-1	1/4 Yd (7" Strip) (1) 7" Strip	Fabric Swatch
Fabric BT1:b T-Template C-1	1/4 Yd (7" Strip) (1) 7" Strip	Fabric Swatch
Fabric BT1:c T-Template C-1	1/4 Yd (7" Strip) (1) 7" Strip	Fabric Swatch
Fabric BT1:d T-Template C-1	1/4 Yd (7" Strip) (1) 7" Strip	Fabric Swatch
Fabric BT1:e T-Template C-1	1/4 Yd (7" Strip) (1) 7" Strip	Fabric Swatch
Fabric BT1:f T-Template C-1	1/4 Yd (7" Strip) (1) 7" Strip	Fabric Swatch
Fabric BT1:g T-Template C-1	1/4 Yd (7" Strip) (1) 7" Strip	Fabric Swatch
Fabric BT1:h T-Template C-1	1/4 Yd (7" Strip) (1) 7" Strip	Fabric Swatch

### ► Fabrics A1:a to A1:d (T-Temp A1)

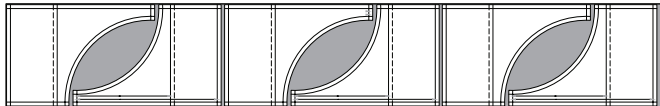
One 3-3/4" by 42" strip yields enough fabric to cut (12) squares.



**Step 1:** Cut (1) 3-3/4" x 42" strip from each Fabric A1:a to A1:d. Cut (1) square from each matching the size and shape of T-Template A-1. Each square as you assemble this project, will have it's own center color.

► **Fabric BT1:a to BT1:h (T-Temp C-1)**

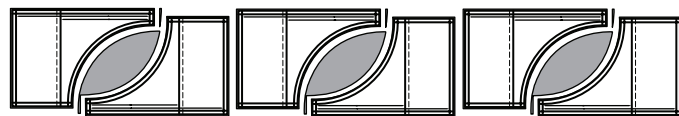
One 7" by 42" strip yields enough fabric to cut (6) pieces of fabric that are the size and shape of the T-Template C-1.



**Step 1:** Cut (1) 7" x 42" strip from each Fabric BT1:a to BT1:d.

**Step 2:** With each fabric right-side-up, cut the following number of pieces from each Fabric to the size and shape of T-Template C-1:

- Fabric BT1:a: (1) piece
- Fabric BT1:b: (4) pieces
- Fabric BT1:c: (3) pieces
- Fabric BT1:d: (3) pieces
- Fabric BT1:e: (3) pieces
- Fabric BT1:f: (3) pieces
- Fabric BT1:g: (3) pieces
- Fabric BT1:h: (4) piece



**TABLE RUNNER ASSEMBLY**

A layout graphic for the Table Runner and Placemats is shown on Page 9. It is important to get proper fabric placement before you begin sewing your project together to get the Ombre effect shown on the cover.

**Step 1:** Complete the curved piecing to sew all the T-Temp C-1 pieces to the Melons. Follow the curved piecing instructions on Page 10.

**Step 2:** Complete the Partial Seam assembly steps on Page 10 to sew together the 15" blocks. Then, sew the blocks together using a quarter-inch seam. Press the final seams all in the same direction.

**Step 3:** Sew the rectangle halves together on each of the placemats to complete the placemats.

► **Fabric A2: Table Runner Border**

**Step 1:** You have (1) 1-3/4 yard fabric for the borders on the Table runner. The measured cuts for the borders are:

- (2) 60-1/2" x 2-3/4" strips
- (2) 20" x 2-3/4" strips
- The remaining fabric can be used for Binding if you like.

**Step 2:** However, it is suggested that you sew together the center of your table runner as outlined in the Table Runner

Assembly section before cutting your borders. Then, actually take measurements of each side to determine the actual cut size of your border.

**Step 3:** Measure the length of the finished center of your table runner, then cut that same size for each of the borders.

**Step 4:** Then, measure the width of the center of the table runner plus the border edges on the vertical sides. And, cut the top and bottom pieces to the measured size.

**Step 5:** Sew the borders on. It is recommended to pin or glue at the center, and then use a glue pen on each end, and ease the edges in between the center and the edges to avoid any puckers or stretching and keep everything nicely aligned.

**Step 6:** Press the seams towards the borders.

► **Fabric A3:a to A3:d: Placemat Borders**

**Step 1:** You have (4) 1/8 yard cuts of fabrics for the Placemat Borders.

**Step 2:** Cut (2) 2" x 42" strips, then, from each strip, cut (2) 2" x 12-1/2" border pieces. Note that this is the measured size of the borders.

**Step 3:** However, similar to the table runner, you may want to measure the actual size of each table runner and cut the pieces to the exact size needed for each border. It is likely that the 12-1/2" size will fit very well, but just in case, measuring never hurts.

**Step 4:** Measure the length of the finished center of your table runner, then cut that same size for each of the borders.

**Step 5:** Then, measure the width of the center of the table runner plus the border edges on the vertical sides. And, cut the top and bottom pieces to the measured size.

**Step 6:** Sew the borders on. It is recommended to pin or glue at the center, and then use a glue pen on each end, and ease the edges in between the center and the edges to avoid any puckers or stretching and keep everything nicely aligned.

**Step 7:** Press the seams towards the borders.