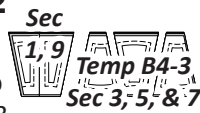


Step 2: *Unit B4, T-Template B1* is used to cut (16) pieces. Reposition the templates as needed to complete the cutting. Clip the pieces together and place into the Block Group Bag B4.



► **Fabrics B4-2:a to B4-2:d (TLS) #2**

These cutting instructions require that you to cut apart (TLS) #1 into individual Sec. Temp prior to cutting your fabric. The Temp B4-3 pieces doesn't have section labels. It would be helpful at this time to label one as Sec. 3, one as Sec. 5, and one as Sec. 7.

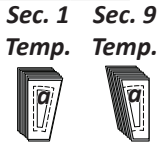


Fabric B4-2:a: One 4-1/4" by 42" strip yields enough fabric to cut (12) pieces for each Sec. Temp. B4-1 & B4-9.

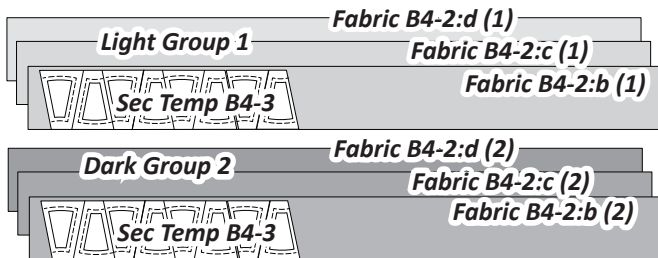
Step 1: Cut (2) 4-1/4" strips. Stack the strips facing right-side-up. Cut (16) pieces with each Sec. Temp. B4-1 & B4-9.



Step 2: (16) pieces are clipped to each template then place in Group Bag B4.



Fabric B4-2 (b,c,d) (1 & 2): One 4-1/4" by 42" strip yields enough fabric to cut (20) pieces for Sec. Temp. B4-3, but you only need (8) pieces cut from each colors.

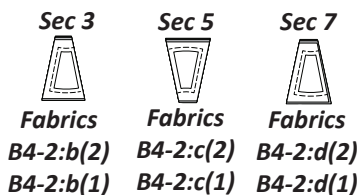


Step 1: Cut (1) 4-1/4" by 42" strip from each color. Stack the strips facing right-side-up and cut (8) pieces with Sec. Temp B4-3 from each color.



Step 2: Before you place in the bag, restack the fabrics as follows. Each stack of (16) pieces is clipped to the section template and place into Group Bag B4.

- Label one Template as Sec. 3: Place (8) Fabric B4-2:b(2), then (8) Fabric B4-2:b(1) on top.
- Label one Template as Sec. 5: Place (8) Fabric B4-2:c (2), then (8) Fabric B4-2:c(1) on top.
- Label one Template as Sec. 7: Place (8) Fabric B4-2:d(2), then (8) Fabric B4-2:d(1) on top.



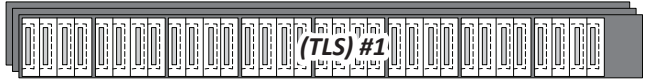
► **Fabric B4-3:**

One 4-1/4" by 42" strip yields enough fabric to cut (8) pieces matching the size and shape of (TLS #2).

- Cut (2) 4-1/4" strips from Fabric B4-3.

► **Fabric B4-3: (TLS) #2**

Step 1: The (3) 4-1/4" x 42" strips are stacked facing right-side-up.

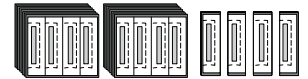


Step 2: *Unit B4, Template Layout Sheet #2* is used to sub-cut (16) pieces matching the size and shape of the (TLS).



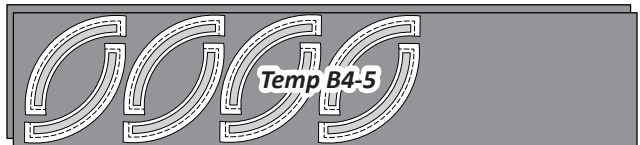
Step 3: The fabric pieces are stacked into (2) sets of (8), then placed beneath one each of (2) (TLS).

Step 4: To complete the cutting, slice through the paper and fabric on each Cut Line. Clip the pieces together and place into the Block Group Bag B4.



► **Fabric B4-4: Temp B4-5**

Step 1: Cut and stack (2) 9" by 42" strips from *Fabric B4-4*. Position the strips facing right-side up. Repositionable fabric glue is placed on the backside of each *Unit B4, Temp B4-5*. The backside of each template is placed against the right-side of the fabric.

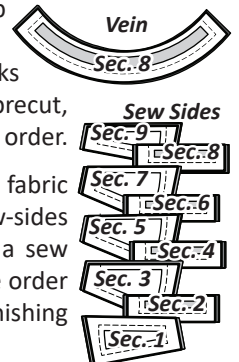


Step 2: To complete the cutting, trim the excess fabric off around the perimeter of each Sec. Temp. Cut (16) pieces. Clip the pieces together and place into the Block Group Bag B4.



► **STACKING: UNIT B4**

Stacking Order: If you are working with multiple colors make sure the background fabrics are paired up with the temp pieces for the spikes before you begin sewing. You should have (3) stacks for each template with (8) template pieces precut, stacked, and clipped together in the sewing order.



Stacking: Position the templates and fabric pieces facing right-side up, with the sew-sides aligned at the top. Sec. 1 does not have a sew side. The pieces are then stacked in reverse order starting with the largest # on the bottom finishing with Sec. 1 on top.