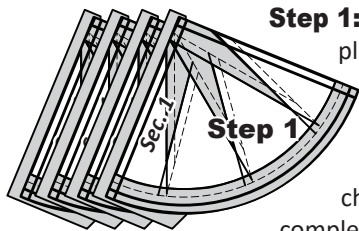


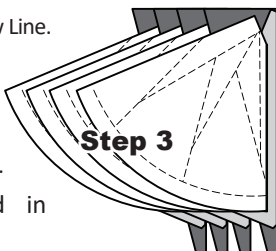
piecing by completing each step multiple times, stacking as you go, and keeping your units and work space organized as you sew. I highly recommend that you try this process after making your first unit.



Step 1: The first piece of fabric is placed under Sec. 1 on each of the foundation papers before moving on to the next step.

Step 2: The next part of the chain piecing would involve completing Steps a–d.

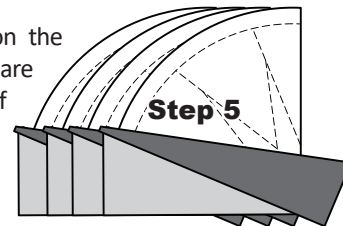
- Line the Fold Template up with the Sew Line.
- Fold the paper back over the fold template.
- Position the *Add-A-Quarter* ruler.
- Trim a quarter-inch seam allowance.



Step 3: Fabric #2 is now placed in position under each paper.

Step 4: The fabrics are sewn onto the units, playing follow the leader, starting with the first piece of paper on the top of your stack, then the second and third, and so on, until all the pieces have been sewn.

Step 5: The fabric is pressed on the back side of the paper. The steps are repeated as you add each round of fabric.



USING THE INSTRUCTIONS FOR THIS PATTERN

The following instructions are set up by Chapter based on the blocks that are included in your pattern. It is recommended that you complete the instructions in each chapter and chain piece each type of block before moving on to the next chapter.

Honeydew Melon

Chapter 1

Fireworks Mixers JNQ00275-B-003

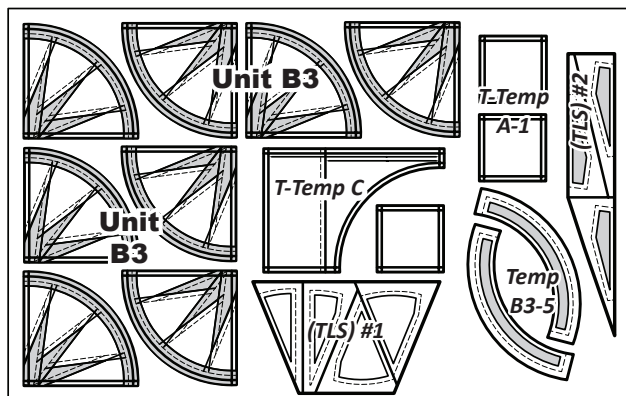
GROUP B3: HONEYDEW MELON INSTRUCTIONS

Ziploc Storage Bags: You will need (1) bag to complete the organization for these instructions. You will only need (30) units, but the pattern includes (48). Set aside (2) NP 871 and see Page 18 for more information on using the extra pieces.

- Block Group Bag B3: (30) Unit B3 Foundation Papers

► Preparing Foundation Papers & Templates:

Cut out (30) Unit B3, foundation papers [NP 871] and place in Group Bag B3 along with the associated templates. See the newsprint below for assigned Unit and Template names. *Refer back to General Information under Foundation Papers and Templates for instructions on how to prepare your foundation papers and templates.



NOTE - T-Temp C-1 & T-Temp A-1: See Page 18 for how to use T-Temp C-1 to make extra projects.

► Fabric Information:

The *Unit Chart* includes yardage, fabric numbers, and a reference to the Fabrics #s assigned to the T-Templates and (T)LS's for Unit B3. Fabric A1 is assigned to T-Temp A1, Fabric B3-1 is assigned to the background sections, Fabrics B3-2:a to B3-2:e are for the spikes, and Fabric B3-3 is for the accent vein. For each Fabric # we have listed the total yardage, along with the # of strips to cut for each fabric.

Unit B3: (30) Blocks		
GROUP-B3 FABRIC #	YARDAGE INCH	FABRIC SWATCH
Fabric A1: T-Temp A1	1/8 yd or (3-3/4") (1) 3-3/4" Strip	Fabric Swatch
Fabric B3-1 Bkg Unit B3 (T)LS #1	1-1/8 yd or (37-1/2") (6) 6-1/4" Strips	Fabric Swatch
Fabric B3-2:a Spikes Unit B3 (T)LS #2	1/4 Yd or (5") (2) 2-1/2" Strips	Fabric Swatch
Fabric B3-2:b Spikes Unit B3 (T)LS #2	1/4 Yd or (5") (2) 2-1/2" Strips	Fabric Swatch
Fabric B3-2:c Spikes Unit B3 (T)LS #2	1/4 Yd or (5") (2) 2-1/2" Strips	Fabric Swatch
Fabric B3-2:d Spikes Unit B3 (T)LS #2	1/4 Yd or (5") (2) 2-1/2" Strips	Fabric Swatch
Fabric B3-2:e Spikes Unit B3 (T)LS #2	1/4 Yd or (5") (2) 2-1/2" Strips	Fabric Swatch
Fabric B3-3: Vein Unit B3 Temp B3-5	1/2 yd or (27") (3) 9" Strips	Fabric Swatch