

Flying Geese

Fireworks Mixers JNQ00275-E-003

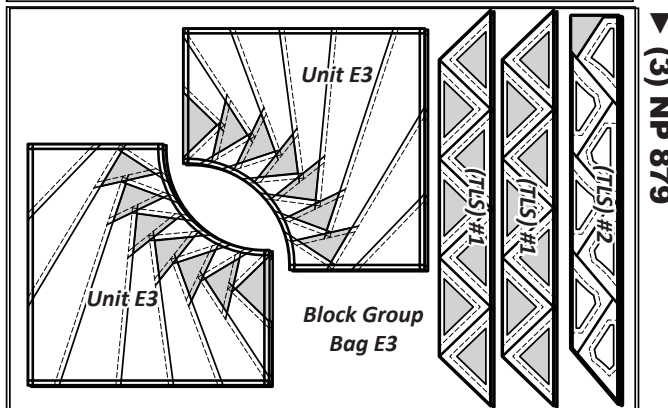
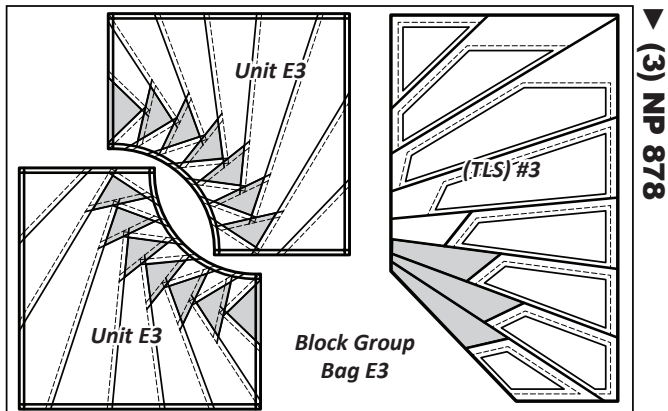
GROUP E3: FLYING GEESE INSTRUCTIONS

Ziploc Storage Bags: You will need (1) large bag to complete the organization for these instructions. Label the bag as follows to stay organized while cutting the Foundation Units and Templates. This package includes (12) Foundation Units.

- **Block Group Bag E3: (12) Unit E3 Foundation Papers and associated Templates.**

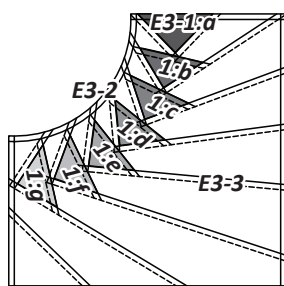
► Preparing Foundation Papers & Templates:

Cut out (12) Unit E3, papers [NP 878 & 879] and place in Group Bag E2 along with the Template Layout Sheets. Unit E3 foundation papers, (TLS), and Bag #s are referenced on the newsprint graphics that follow. *Refer back to General Information under Foundation Papers and Templates for instructions on how to prepare your foundation papers and template.



NOTE - Backside Graphic: The color layout shown matches the printed side of the paper, which is the backside of the quilt.

► Color Layout:



► Fabric and Block Information:

The *Unit Chart* includes yardage, fabric numbers, and a reference to the Fabrics #s assigned to the (TLS's) for Unit E3. Fabrics E3-1:a to E3-1:g are assigned to the geese, Fabric E3-2 and E3-3 are assigned to the background sections. For each Fabric # we have listed the total yardage, along with the # of strips required. The finished block measures 12" by 12".

Unit E3: (12) Blocks

GROUP-E3 FABRIC #	YARDAGE INCH	FABRIC SWATCH
Fabric E3-1:a to E3-1:g Geese Unit E3 (TLS) #1	1/8 Yard each, or (1) 2-3/4" strip from each color (a, b, c, d, e, f, g)	Fabric Swatch :a
Fabric Swatch :b	Fabric Swatch :c	Fabric Swatch :d
Fabric Swatch :e	Fabric Swatch :f	Fabric Swatch :g
Fabric E3-2: Bkg Unit E3 (TLS) #2	1/2 yd or (15"), (6) 2-1/2" strips	Fabric Swatch
Fabric E3-3: Bkg Unit E3 (TLS) #3	(2) yds or (72"), (6) 12" strips	Fabric Swatch

CUTTING INSTRUCTIONS

► Fabric E3-1: Colors (a - g) (TLS) #1

Step 1: Cut (1) 2-3/4" strip from each of the (7) colors, Fabric E3-1: (a to g). Stack the strips facing *right-side-up* into (1) stack.



Step 2: *Unit E3, (TLS) #1* is used to sub-cut (12) pieces matching the size and shape of each (TLS). From the 2nd template, you will only need to cut (5) geese stacks instead of all (7).



Step 3: To complete the cutting, slice through the paper and fabric on each Cut Line.



Step 4: The template pieces are separated by color into (7) groups. Each group is clipped together and placed into Block Group Bag E3. Label each stack as shown above, with the small color letter so it is easier to stay organized when piecing.

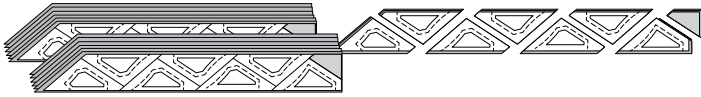
► **Fabric E3-2: (TLS) #2**

Step 1: Cut (6) 2-1/2" x 42" strips from Fabric E3-2. The strips are stacked facing *right-side-up*.

Step 2: *Unit E3, Template Layout Sheet #2* is used to sub-cut (12) pieces matching the size and shape of the (TLS).



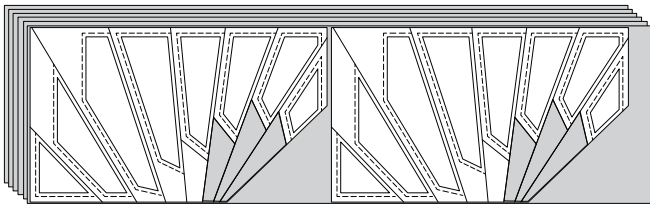
Step 3: The fabric pieces are stacked six deep into (2) groups, then placed beneath one each of the (TLS).



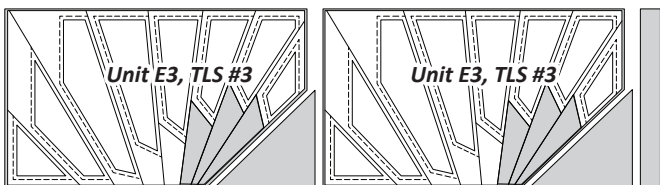
Step 4: To complete the cutting, slice through the paper and fabric on each Cut Line. Clip the pieces together and place into the Block Group Bag E3.

► **Fabric E3-3: (TLS) #3**

Step 1: Cut (6) 12" x 42" strips from Fabric E3-3. The (12") strips are stacked facing *right-side-up*.

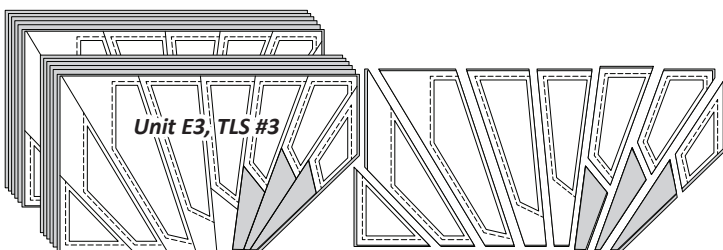


Step 2: *Unit E3, Template Layout Sheet #3* is used to sub-cut (12) pieces matching the size and shape of the (TLS).



Step 3: The fabric pieces are stacked six deep into (2) groups, then placed beneath one each of the (TLS).

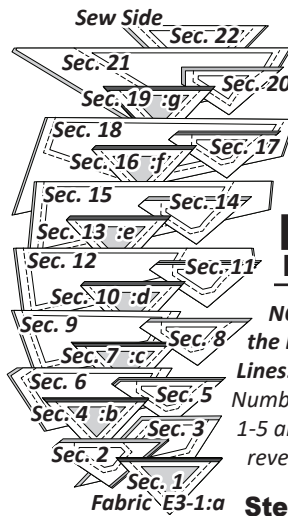
Step 4: To complete the cutting, slice through the paper and fabric on each Cut Line. Clip the pieces together and place into the Block Group Bag E3.



STACKING: UNIT E3

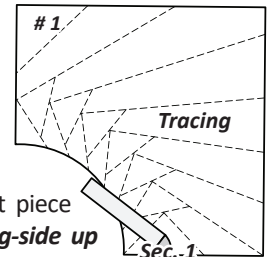
Instructions for Chain Piecing: Before you start chain piecing check the color order of the fabric pieces beneath each template and make sure the colors for the spikes and background pieces are paired and stack in the sewing order.

Stacking: Position the templates and fabric pieces facing right-side up, with the sew-sides aligned at the top. Sec. 1 does not have a sew side. The pieces are then stacked in reverse order starting with the largest # on the bottom finishing with Sec. 1 on top.

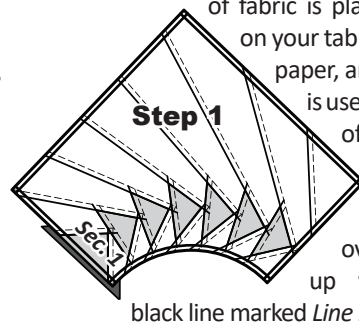


FOUNDATION PAPER PIECING: UNIT E3

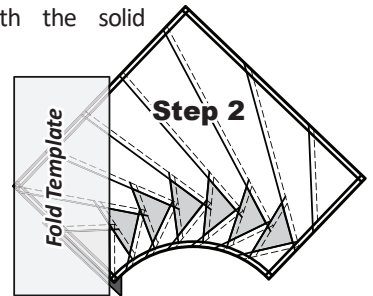
NOTE - Tracing the Dashed Lines: Optional. Number your papers 1-5 and stack in reverse order.



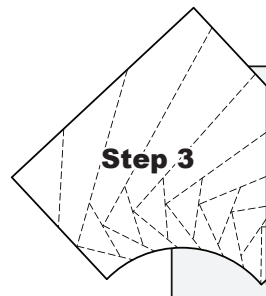
Step 1: The first piece of fabric is placed *wrong-side up* on your table. Lift the foundation paper, and slide the fabric under *Sec. 1*. Glue is used to adhere the fabric to the backside of the paper. Repeat **Step 1** for each foundation unit.



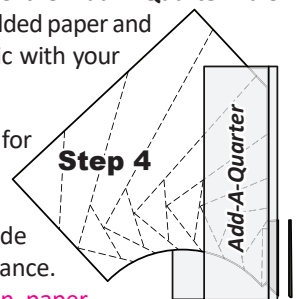
Step 2: Place the fold template over the top of *Sec. 1*, lining the edge up with the solid black line marked *Line 1*.



Step 3: Fold the paper back over the top of the fold template.



Step 4: Place the *Add-A-Quarter* ruler next to the folded paper and trim the fabric with your rotary cutter.



Step 5: A). Place the fabric piece for *Sec. 2*, *right-side-up* next to the folded back paper. B). Lift the paper, slide the fabric under *Sec. 1*, and line the sew side up with the trimmed seam allowance. Repeat **Steps 1-5** for each foundation paper before moving onto **Step 6**.

