

- Example: If the swatches placed in each diamond slot A3, A6 and A9 are cut from the same color, those (3) Fabric #s would be assigned to that color.

Sometimes we assign more than one fabric to the same fabric reference, in which case small letters are used to reference the additional colors. It should be noted, Fabric A1 has been assigned to (2) color, shown on the Diamond Block Layout, Page 1.

After the Fabric #s are assigned, it's a good idea to paste the swatches onto the Diamond Block. The remaining swatches are assigned to your fabric chart below and foundation papers as shown on the following pages.

**Yardage Chart:** The chart that follows includes yardage, fabric numbers, and a reference to the fabrics needed to complete the cutting for the Foundation Sheets labeled A1-A4.

Unit Chart A1 Yardage, Make 8 Diamonds				
FABRIC #s	INCHES	YDS	ASSIGNED COLOR	
	(Each Color)			
FABRIC A1 Foundation Sheet A1	2-1/2" ea. or 1/8 yd ea		:a	:b
FABRIC A2 Foundation Sheet A2	2-1/2" or 1/8 yd		Fabric Swatch	
FABRIC A3 Foundation Sheet A3	2-1/2" or 1/8 yd		FABRIC SWATCH	
FABRIC A4 Foundation Sheet A4	5" or 1/4 yd		FABRIC SWATCH	
FABRIC A5 Foundation Sheet A1	2-1/2" or 1/8 yd		FABRIC SWATCH	
FABRIC A6 Foundation Sheet A2	2-1/2" or 1/8 yd		FABRIC SWATCH	
FABRIC A7 Foundation Sheet A3	2-1/2" or 1/8 yd		FABRIC SWATCH	
FABRIC A8 Foundation Sheet A4	5" or 1/4 yd		FABRIC SWATCH	
FABRIC A9 Foundation Sheet A1	2-1/2" or 1/8 yd		FABRIC SWATCH	
FABRIC A10 Foundation Sheet A2	2-1/2" or 1/8 yd		FABRIC SWATCH	
FABRIC A11 Foundation Sheet A3	2-1/2" or 1/8 yd		FABRIC SWATCH	
FABRIC A12 Foundation Sheet A4	5" or 1/4 yd		FABRIC SWATCH	
FABRIC A13 Foundation Sheet A1	4" or 1/8 yd		FABRIC SWATCH	
FABRIC A14 Foundation Sheet A2	4" or 1/8 yd		FABRIC SWATCH	
FABRIC A15 Foundation Sheet A3	4" or 1/8 yd		FABRIC SWATCH	
FABRIC A16 Foundation Sheet A4	8" or 1/4 yd		FABRIC SWATCH	

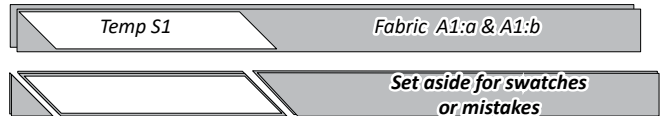
## CUTTING AND STACKING INSTRUCTIONS

### ► Fabrics A1-A16

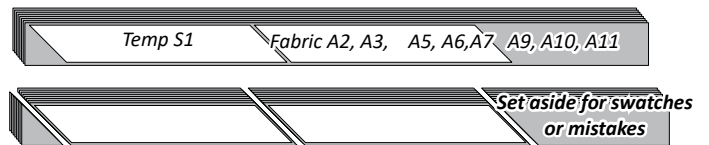
**Step 1:** Cut (1) 2-1/2" by 42" strip from each fabric assigned to Fabrics A1:a, A1:b, A2, A3, A5, A6, A7, A9, A10, A11.

**Step 2:** Press and stack the strips across the width of the fabric facing *right-side-up*.

**Step 3:** Fabric A1:a and A1:b are stacked together facing *right-side-up*, A1:b on bottom, A1:a on top. Cut (1) piece matching the size and shape of *Strip Piecing Template S1* from each color.

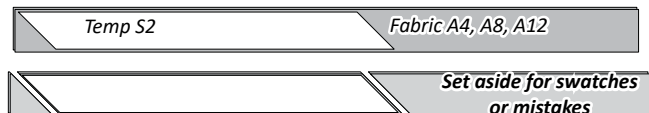


**Step 4:** Fabrics A2, A3, A5, A6, A7, A9, A10, & A11 are stacked together facing *right-side-up*, in descending order starting with Fabric A11 on the bottom ending with Fabric A2 on top. Cut (2) pieces matching the size and shape of *Strip Piecing Template S1* from each color.



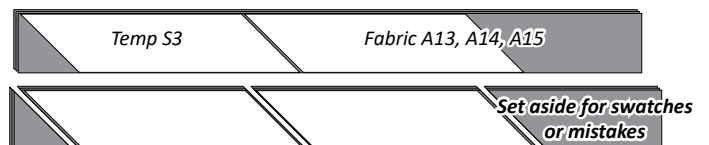
**Step 5:** Cut (2) 2-1/2" by 42" strips from each fabric assigned to Fabrics A4, A8, A12.

**Step 6:** Press & stack strips across the width of the fabric facing *right-side-up* starting with Fabric A12 on the bottom ending with Fabric A4 on the top. Cut (1) piece matching the size and shape of *Strip Piecing Template S2* from each strip.



**Step 7:** Cut (1) 4" by 42" strip from each fabric assigned to Fabrics A13, A14, & A15.

**Step 8:** Press and stack the strips together across the width of the fabric facing *right-side-up* starting with Fabric A15 on the bottom ending with Fabric A13 on the top. Cut (2) fabric pieces matching the size and shape of *Strip Piecing Template S3* from each color.



**Step 9:** Cut (2) 4" by 42" strips from Fabric A16.

**Step 10:** Press and stack the strips across the width of the fabric facing *right-side-up*. Cut (1) fabric piece matching the size and shape of *Strip Piecing Template S3* from each strip.

