

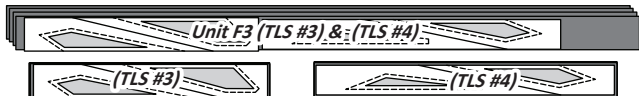
**Step 2:** Position (1) each of *Unit F2 (TLS #1)* and *Unit F2 (TLS #2)* onto the first stack. Cut (4) pieces matching the size of each (TLS).



**Step 3:** The cutting is completed by slicing through the paper and fabric on Cut Line 1 to separate the templates. Place these (4) templates with the foundation papers in Bag F2.



**Step 4:** Position (1) each of *Unit F3 (TLS #3)* and *Unit F3 (TLS #4)* onto the second stack. Cut (4) pieces matching the size of each (TLS).



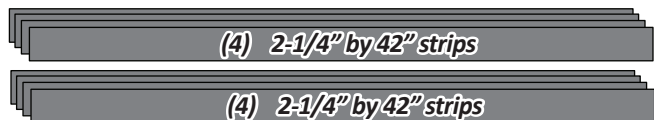
**Step 5:** The cutting is completed by slicing through the paper and fabric on Cut Line 1 to separate the templates. Place these (4) templates with the foundation papers in Bag F3.



► **Fabric F3 : (TLS) #5, #6, #7, #8**

*NOTE - If you precut your fabric strips using the Quiltster APP, each 4-1/2" strip is sub-cut into (2) 2-1/4" strips to achieve the # of strips listed in Step 1.*

**Step 1:** Cut (8) 2-1/4" by 42" strips from Fabric F3. Stack the strips facing *right-side up*.



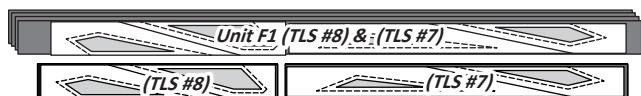
**Step 2:** Position (1) each of *Unit F4 (TLS #5)* and *Unit F4 (TLS #6)* onto the first stack. Cut (4) pieces matching the size of each (TLS).



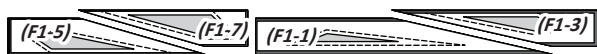
**Step 3:** The cutting is completed by slicing through the paper and fabric on Cut Line 1 to separate the templates. Place these (4) templates with the foundation papers in Bag F4.



**Step 4:** Position (1) each of *Unit F1 (TLS #8)* and *Unit F1 (TLS #7)* onto the second stack. Cut (4) pieces matching the size of each (TLS).

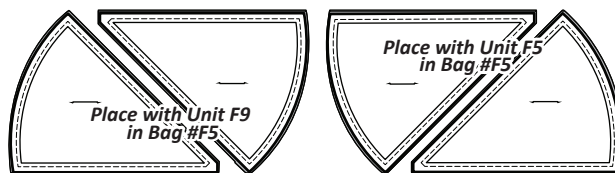
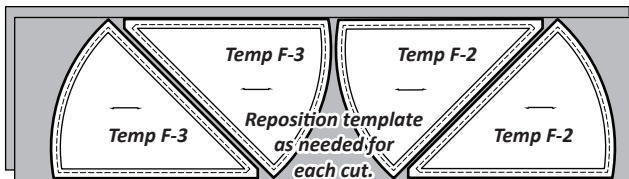


**Step 5:** The cutting is completed by slicing through the paper and fabric on Cut Line 1 to separate the templates. Place these (4) templates with the foundation papers in Bag F1.



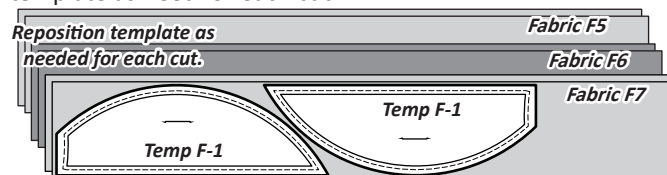
► **Fabric F4 : Temp F-2 & F-3**

**Step 1:** Cut (2) 11" by 42" strips from *Fabric F4*. Stack the strips facing *right-side up*. Position (1) each *Temp F2 & Temp F3* onto your strips and cut (4) pieces with each template. Place Temp. F3 with Unit F9, and Temp F2 with Unit F5 in Bag #F5.



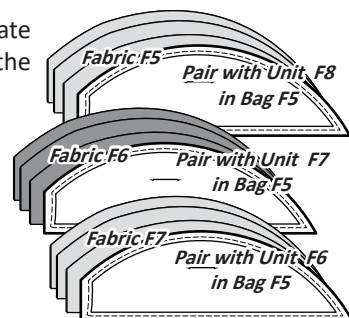
► **Fabric F5, F6, & F7: Temp F-1**

**Step 1:** Cut (2) 6-1/2" by 42" strips from each *Fabric F5, F6, and F7*. Stack the strips facing *right-side up*. Position *Temp F1* onto your strips and cut (4) pieces from each fabric. Reposition the template as need for each cut.



**Step 2:** Place these template pieces in Bag F5 and pair with the following Units.

- Fabric F5 is paired with Unit F8
- Fabric F6 is paired with Unit F7
- Fabric F7 is paired with Unit F6.



► **Fabric F8: (TLS) #11, #12**

**Step 1:** Cut (2) 15" by 42" strips from *Fabric F8*. Place both strips on your table facing *right-side up*. Repositionable fabric glue is applied to the backside of each (TLS) #11 for *Units F6, F7, & F8* and (TLS) #12 for *Units F5 & F9*. The backside of each layout sheet is then placed against the *right-side* of the fabric. (2) ea. (TLS #11 & #12) are positioned onto each strip.

