

Twinkle Star

38" x 38"



Backing: 1 1/4 yd • Binding: TONGA-B6875 JET, 1/2 yd



▲
S1
Tonga-B7900-Ink
1/8 yd



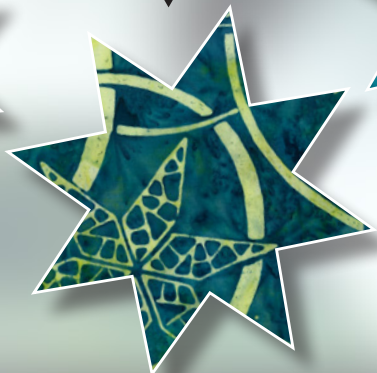
▲
B1, B3
Tonga-B7900-
Whisper
1 yd



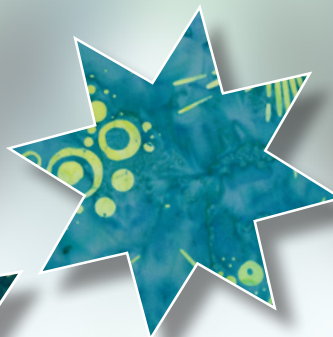
▲
S9, B2:h, C1
TONGA-B6875 JET
5/8 yd



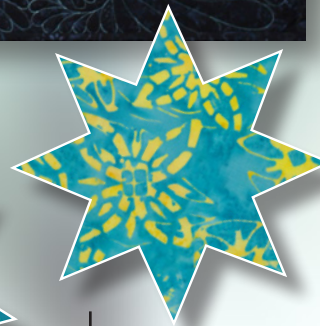
▲
S6, B2:g
TONGA-B8786 DEEP
1/4 yd



▲
S8, B2:f, C3
TONGA-B8788 TEAL
5/8 yd



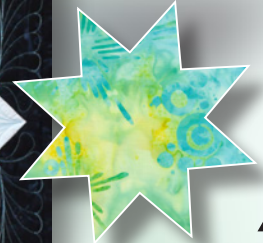
▲
S3, B2:e
TONGA-B8785 BAY
1/4 yd



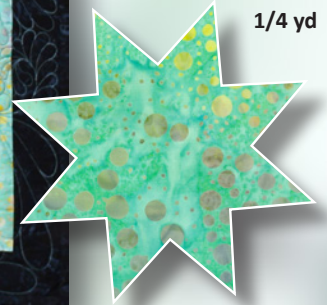
▲
S7, B2:c, C2
TONGA-B8166 ARUBA
3/8 yd



▲
S4, B2:a
TONGA-B8168 ICE
1/4 yd



▲
S2, B2:b
TONGA-B8785
SURF
1/4 yd



▲
S5, B2:d
TONGA-B4929
AQUA
1/4 yd

Quiltworx.com
Julie Niemeyer Quilting

E-mail: info@quiltworx.com
Website: www.quiltworx.com

Visit us on:

