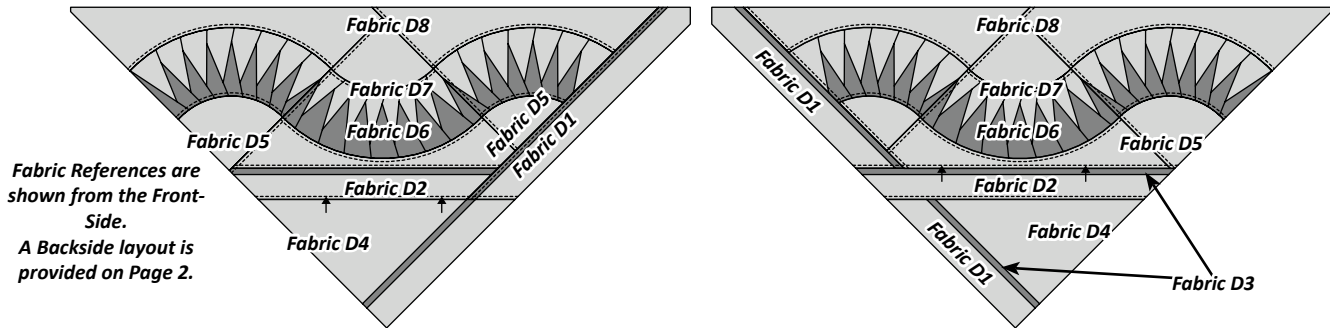


Assembly Graphic 7: Join the following pieces starting at the left and moving to the right. Press seams toward Unit D4 and T-Temp D-2.

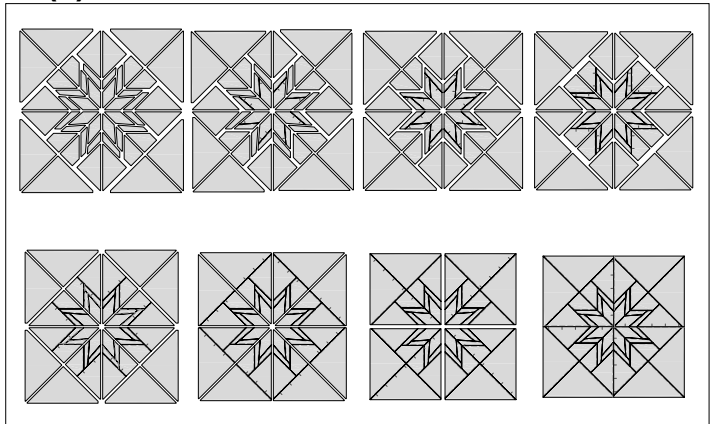
- **Left Group:** Unit D1 to Unit D4/D7/D8/D9.
- **Right Group:** Unit D2/D3 to Unit D10/D8/D7.



QUILT ASSEMBLY

Remove any remaining foundation paper from all the units at this time. Set your machine to sew a quarter-inch seam allowance. Reference the Layout Newsprint LP 71 for the Assembly Graphics 1 to 8. The graphics on LP 71 are shown assuming you would be looking at the front side of the quilt.

► (1) LP 71



Assembly Graphic 1: The pieces in Groups A, B, F, and D are arranged on a design wall as shown to the right.

Assembly Graphic 2: Join Group A to the B1 Group. Press the seams toward the B1 Group.

Assembly Graphic 3: Join the B2 Group to Group A/B. Press the seams toward the B2 Group.

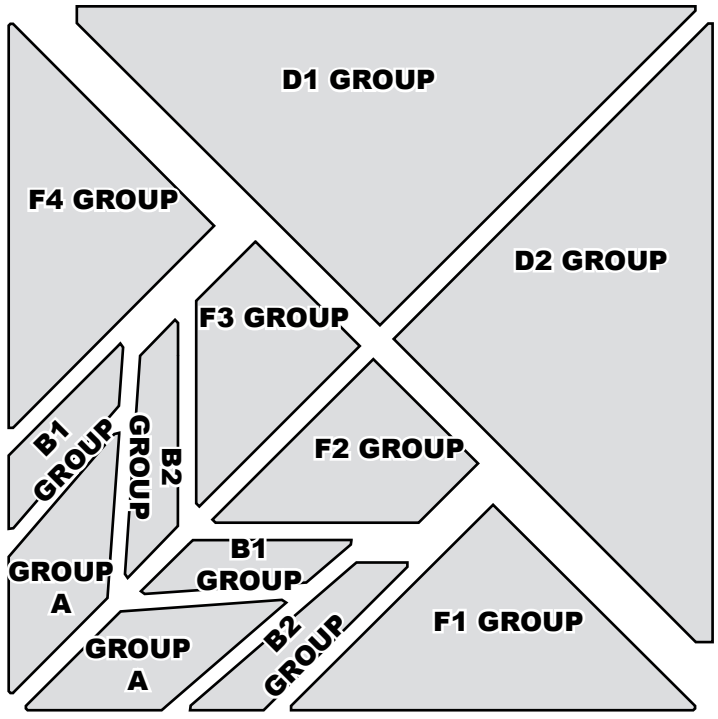
Assembly Graphic 4: Join Groups F2 and F3 to Group A/B. Press the seams toward Group F3 and away from Group F2.

Assembly Graphic 5: Join Group F1 and F4 to the Groups A/B/F. **Press the seams toward Groups F1 and away from Group F4.**

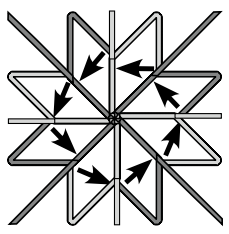
Assembly Graphic 6: Join Groups A/B/F to Groups D1 and D2. **Press the seams towards Groups D1 and away from Group D2.** This will complete (8) wedges.

Assembly Graphic 7: Join the wedges to create (4) quarter squares. Press the seams in a clockwise direction from the front side of the quilt.

Assembly Graphic 8: Join the (4) quarter squares. Press the seams in a clockwise direction from the front side of the quilt.



Pressing the Center of the Star: The last four seams are pressed counterclockwise on the back side of the quilt. Before you can press the last four seams you will need to pick back the stitches to meet the last cross seam sewn on each of the eight seams that intersected in the center of your quilt. This allows you to press the seams counterclockwise on the back side of the quilt, which takes the bulk out of the center star. The Tweaking Diagram was built to show the seams on the backside of the quilt pressed counterclockwise (while they are shown clockwise on LP 71, looking at the pressing from the front side of your quilt).



Backing & Batting: You will need (2) 106" to 108" lengths (how much excess to leave on each side of the quilt is personal preference, but we aim for 6" to 8" around the perimeter) for the backing of your quilt for a total of 9 yards. Quiltworx.com recommends Hobbs 80/20 (full size) batting on a roll or similar to get a nice, thin, but flexible finish to the quilt.