

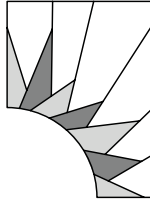
# Sawtooth

## 4th of July JNQ00275-D-001

### GROUP D1: SAWTOOTH INSTRUCTIONS

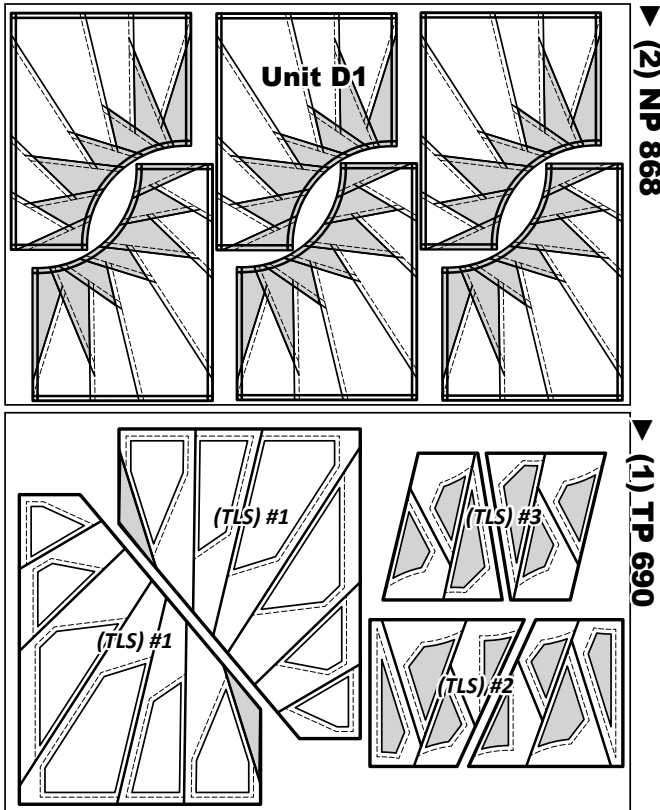
**Ziploc Storage Bags:** You will need (1) large Unit Bag and (2) smaller Color Group Bags to complete the organization for these instructions. Label the bags as follows.

- **Unit Bag #D1:** Unit D1 associated Templates.
- **Color Group Bag (CG1 & CG3):** (5) Unit D1 Papers
- **Color Group Bag (CG2 & CG4):** (5) Unit D1 Papers



### ▶ Preparing Foundation Papers & Templates:

Cut out (10) Unit D1, papers [NP 868]. Place (5) papers into each assigned Color Group Bag (CG1 & CG3) & (CG2 & CG4). The remaining papers are extras. The Template Layout Sheets (TLS) [TP 690] are placed in Unit Bag #D1. After the fabric has been cut, the individual Sec. Temp's from each layout sheet are placed with the foundation papers into their assigned Color Group Bags, both group bags are then placed inside Unit Bag #D1.



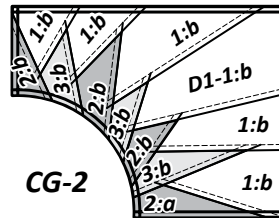
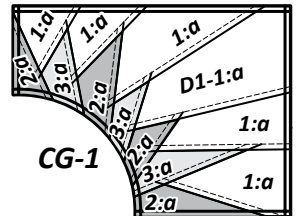
### ▶ Spike Fabric Information:

The *Unit Chart* at the bottom of the page includes yardage, fabric numbers, and a reference to the Fabrics #s assigned to the (TLS) for **Unit D1**. Fabric D1-1 is assigned to the (4) colors which are used for the background sections. Fabric D1-2 and D1-3 are each assigned to the (2) colors which are used for the spikes. The yardage included for each color is calculated to complete up to (4) blocks in each Color Group.

### ▶ (4) Color Group Layouts

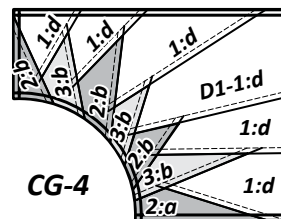
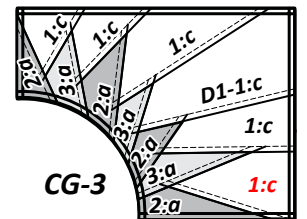
**NOTE - Backside Graphic:** The color layout shown matches the printed side of the paper, which is the back side of the quilt. Fabrics #s 1, 2 & 3 are repeated on each block. The background colors (a-d) assigned to each fabric # are different for each Color Group. A Front Side view is on the lat page.

### ▶ Color Group 1, Make (3) Blocks



### ▶ Color Group 2, Make (3) Blocks

### ▶ Color Group 3, Make (2) Blocks

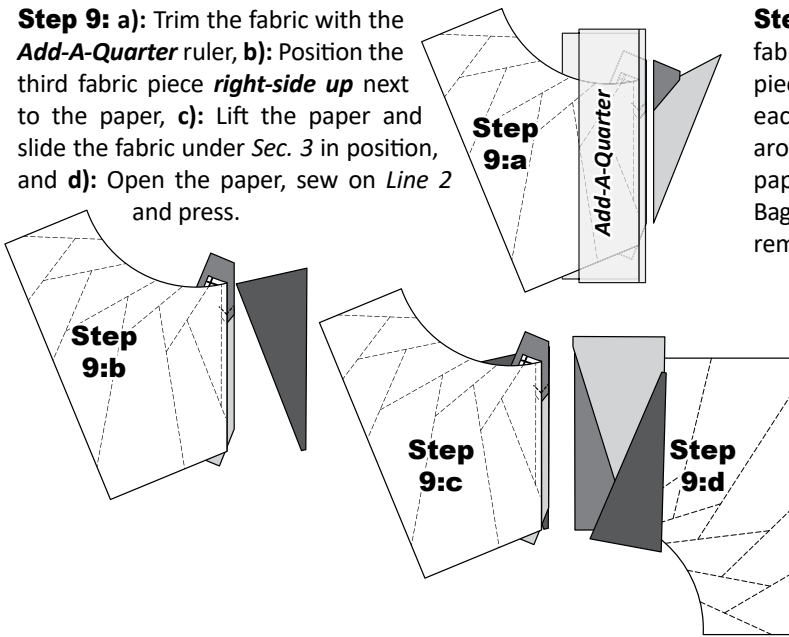


### ▶ Color Group 4, Make (2) Blocks

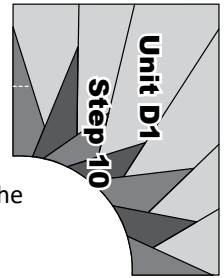
### Unit D1, Yardage, (10) units.

GROUP-D1, FABRIC #	YD'S OR INCH	FABRIC SWATCH	FABRIC SWATCH	FABRIC SWATCH	FABRIC SWATCH
Fabric D1-1: (4) Colors. Unit D1: Bkg. (TLS) #1	1/2 yd or (18") ea.	D1-1:a (Peacock)	D1-1:b (4932-Night)	D1-1:c (Navy)	D1-1:d (Emerald)
Fabric D1-2: (2) Colors. Unit D1: Spikes (TLS) #2	1/4 yd or (8") ea.	D1-2:a (Pink)	D1-2:b (Mint)	D1-2:a (Pink)	D1-2:b (Mint)
Fabric D1-3: (2) Colors. Unit D1: Spikes, (TLS) #3	1/4 yd or (8") ea.	D1-3:a (Red)	D1-3:b (Beach)	D1-3:a (Red)	D1-3:b (Beach)

**Step 9: a):** Trim the fabric with the **Add-A-Quarter** ruler, **b):** Position the third fabric piece **right-side up** next to the paper, **c):** Lift the paper and slide the fabric under **Sec. 3** in position, and **d):** Open the paper, sew on **Line 2** and press.



**Step 10:** Continue adding the remaining fabrics to the foundation units. When the piecing is completed Sew the (TRP) lines on each unit, then trim the excess fabric away around the perimeter of the foundation papers. Place these pieces back into the Unit Bag #D1, then repeat the same piecing for the remaining Color Group.

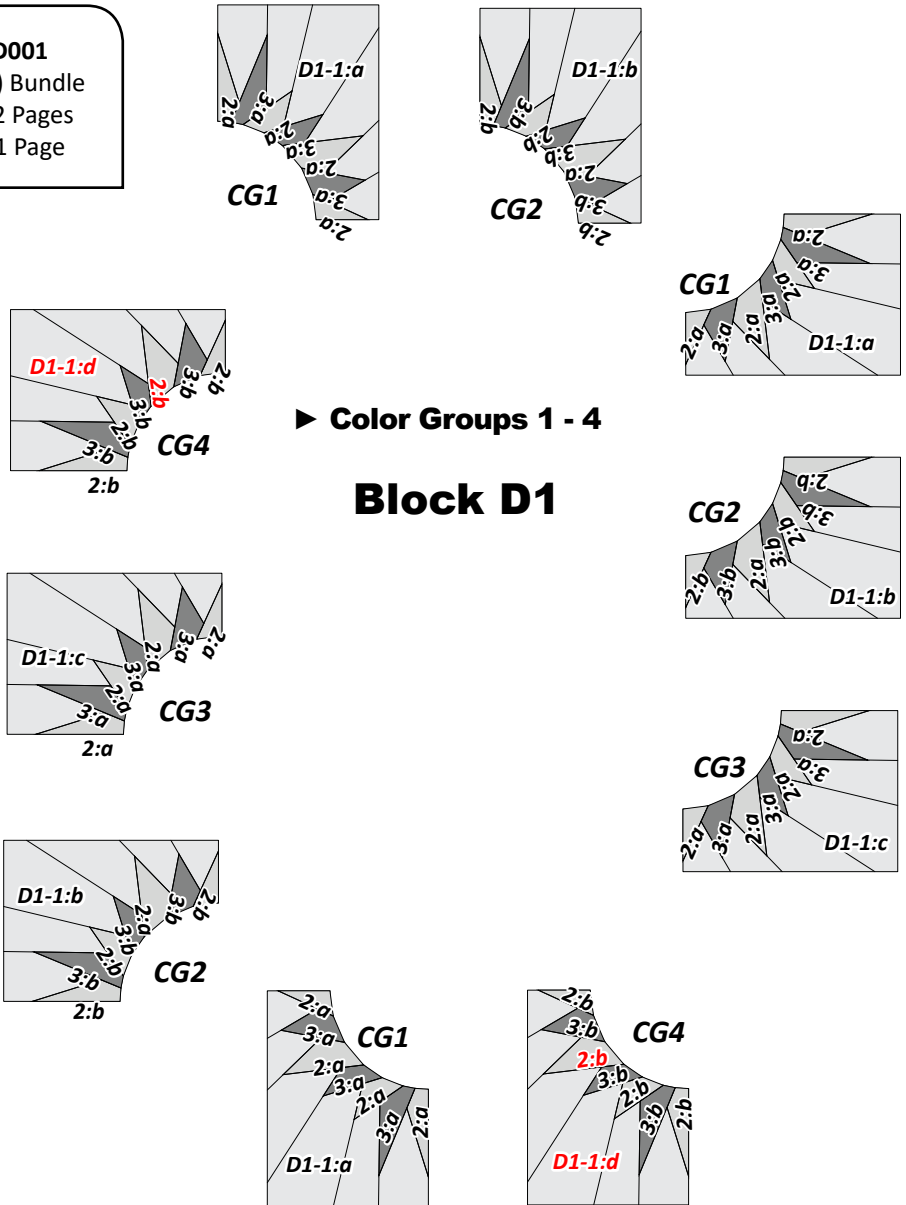


**Unit D1, Yardage, (10) units.**

GROUP-D1, FABRIC #	YARDAGE OR INCH
Fabric D1-1: (a-d) Bkg. Unit D1, (TLS) #1	1/2 yd or (18") ea. (4) Colors (a,b,c,d)
Fabric D1-2: (a,b) Spikes, Unit D1, (TLS) #2	1/4 yd or (8") ea. (2) Colors (a,b)
Fabric D1-3: (a,b) Spikes, Unit D1, (TLS) #3	1/4 yd or (8") ea. (2) Colors (a,b)

*Sawtooth Border Rectangle*

**JNQ00275D001**  
**(12) Units = (1) Bundle**  
 • NP 868: 2 Pages  
 • TP 690: 1 Page



► **Color Groups 1 - 4**  
**Block D1**