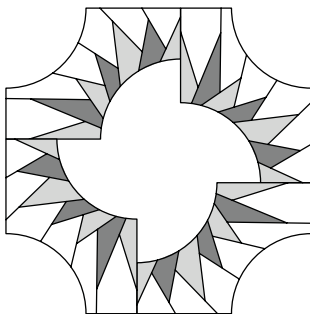


Sawtooth

4th of July JNQ00275-C-001

GROUP C1: SAWTOOTH INSTRUCTIONS

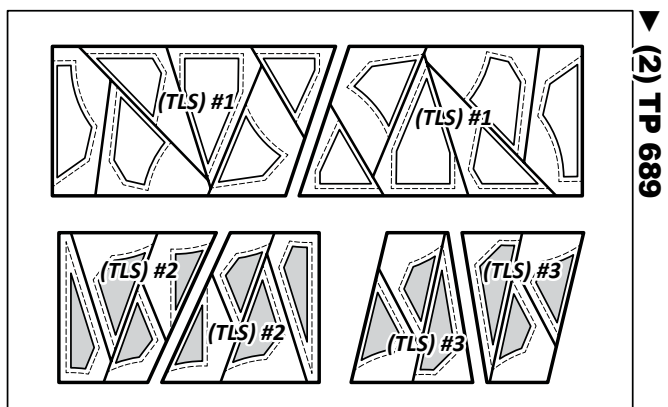
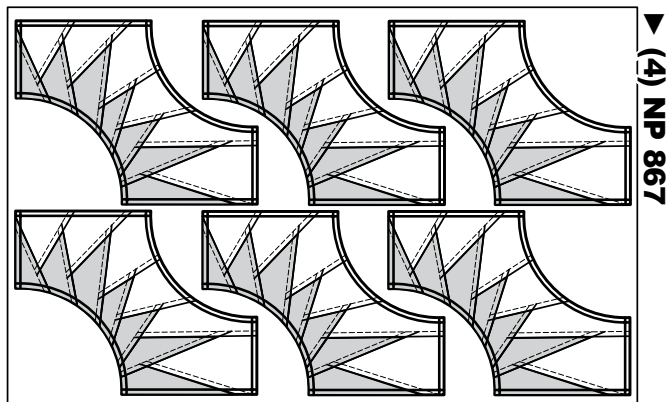
Ziploc Storage Bags: You will need (1) large bag labeled Unit Bag C1 and (4) Color Group Bags to complete the organization for these instructions. Label the bags as follows to stay organized while cutting the Foundation Units and Templates.



- **Unit Bag #C1:** Unit C1 associated Templates.
- **Color Group Bag (CG1 & CG8):** (6) Unit C1 papers.
- **Color Group Bag (CG2 & CG7):** (6) Unit C1 papers.
- **Color Group Bag (CG3 & CG6):** (6) Unit C1 papers.
- **Color Group Bag (CG4 & CG5):** (6) Unit C1 papers.

► Preparing Foundation Papers & Templates:

Cut out (24) Unit C1, [NP 867] and place (6) papers in each Color Group Bag. The Template Layout Sheets (TLS) [TP 689] are placed in Unit Bag #C1. After the fabric has been cut, the individual Sec. Temp's and are placed into the assigned Color Group Bag #s with the foundation papers.



► Sawtooth Fabric Information:

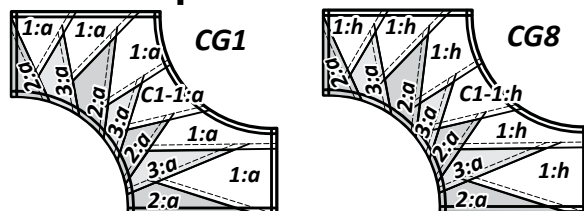
The *Unit Chart* at the top of the next page includes yardage, fabric numbers, and a reference to the Fabrics #s assigned to the (TLS) for **Unit C1**. Fabric C1-1 is assigned to the (8) colors which are used for the Background sections. Fabric C1-2 and C1-3 are each assigned to (4) colors which are used for the spikes. The C1-1:(a-h) yardage is calculated to complete (3) blocks. The C1-2:(a-d) and C1-3:(a-d) yardage is calculated to complete (6) blocks. Since C1-2 and C1-3 are used in multiple color groups, the color groups are referenced as Color Group 1 to 8 (instead of using :a to :h, like we did for the B Group blocks).

► Color Group Layouts: (1-8)

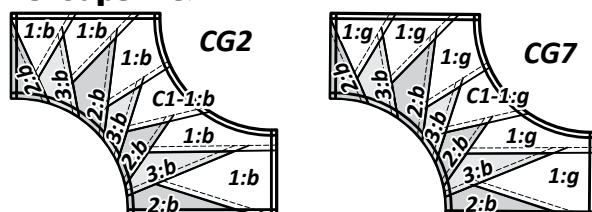
Fabrics: (8) Background Colors and (8) Spike Colors are chosen to complete the (8) Block Groups for Unit C1. Each Block Group includes (3) foundation papers sewn with (1) background fabric and (2) alternating colors for the spikes.

NOTE - Back side Graphic: The color layout shown matches the printed side of the paper, and the back side of the quilt. A front-side view is shown on the back page.

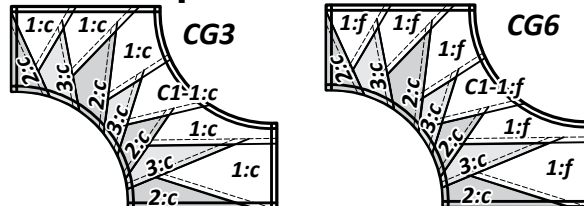
► Color Groups 1 & 8



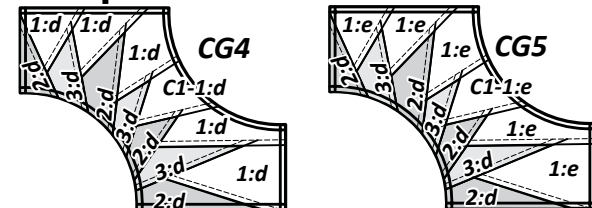
► Color Groups 2 & 7



► Color Groups 3 & 6



► Color Groups 4 & 5



Unit C1, Yardage, (24) units.

| GROUP-C1 FABRIC # | YARDAGE INCH | FABRIC SWATCH | FABRIC SWATCH | FABRIC SWATCH | FABRIC SWATCH | FABRIC SWATCH | FABRIC SWATCH | FABRIC SWATCH | FABRIC SWATCH |
|--|-----------------------|----------------------|-------------------|------------------|----------------------|-------------------|-------------------|----------------------|----------------------|
| Fabric C1-1: (8) Colors Unit C1: Bkg. (TLS) #1 | 1/4 yd or (8") ea. | C1-1:a Grape | C1-1:b Emerald | C1-1:c Navy | C1-1:d 4932-Night | C1-1:e Peacock | C1-1:f Rainbow | C1-1:g 8785-Night | C1-1:h Galaxy |
| Fabric C1-2: (4) Colors Unit C1: Spike (TLS) #2 | 1/4 yd or (8") ea. | C1-2:a Poppy | C1-2:b Pansy | C1-2:c Turq | C1-2:d Neon | C1-2:d Neon | C1-2:c Turq | C1-2:b Pansy | C1-2:a Poppy |
| Fabric C1-3: (4) Colors Unit C1: Spike (TLS) #3 | 1/4 yd or (8") ea. | C1-3:a Canteloupe | C1-3:b Berry | C1-3:c Sea | C1-3:d Yellow | C1-3:d Yellow | C1-3:c Sea | C1-3:b Berry | C1-3:a Canteloupe |

GROUP C1: CUTTING INSTRUCTIONS MULTIPLE COLOR OPTION: 24 BLOCKS

► Fabric C1-1: (a, b, c, d, e, f, g, h) (TLS #1)

One 8" by 42" strip yields enough fabric to cut (3) pieces matching the size and shape of (TLS #1).

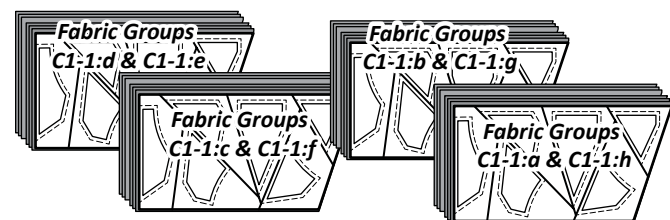
Step 1: Cut (1) 8" by 42" strip from each of the (8) Fabrics (a-h). The strips are stacked facing **right-side-up**, starting with Fabric C1-1:h on the bottom, ending with C1-1:a on the top.



Step 2: Unit C1, Template Layout Sheet #1 is used to sub-cut the (8) strips into (3) stacks.



Step 3: The fabric pieces are sorted by color, then paired stacked into (4) groups. Two color groups are stacked beneath (1) (TLS) as shown below.



Step 4: To complete the cutting, slice through the paper and fabric on each Cut Line. Clip the pieces together and place each stack into its assigned (CG Bag) with (6) Unit B2 foundation papers.

- Fabrics C1-1:a & C1-1:h are placed in Group Bag CG1 & CG8.
- Fabrics C1-1:b & C1-1:g are placed in Group Bag CG2 & CG7.
- Fabrics C1-1:c & C1-1:f are placed in Group Bag CG3 & CG6.
- Fabrics C1-1:d & C1-1:e are placed in Group Bag CG4 & CG5.

Step 5: Set these bags aside for now and continue with the cutting for the spike templates below.

► Fabric C1-2: (a, b, c, d) (TLS #2)

One 8" by 42" strip yields enough fabric to cut (6) pieces matching the size and shape of (TLS #2).

Step 1: Cut (1) 8" by 42" strip from each of the (4) Fabrics (a-d). The strips are stacked facing **right-side-up**, starting with Fabric C1-2:d on the bottom, ending with C1-2:a on the top.



Step 2: Unit C1, Template Layout Sheet #2 is used to sub-cut the (4) strips into (6) stacks.

Step 3: The fabric pieces are sorted by color into (4) groups of (6). Each color group is stacked beneath (1) (TLS).



Step 4: To complete the cutting, slice through the paper and fabric on each Cut Line. The pieces are clipped together, then paired with the background fabric in the (4) Group Bags.



- Fabric C1-2:a is placed in Group Bag CG1 & CG8.
- Fabric C1-2:b is placed in Group Bag CG2 & CG7.
- Fabric C1-2:c is placed in Group Bag CG3 & CG6.
- Fabric C1-2:d is placed in Group Bag CG4 & CG5.

► Fabric C1-3: (a, b, c, d) (TLS #3)

One 8" by 42" strip yields enough fabric to cut (8) pieces matching the size and shape of (TLS #3).

Step 1: Cut (1) 8" by 42" strip from each of the (4) Fabrics (a-d). The strips are stacked facing **right-side-up**, starting with Fabric C1-3:d on the bottom, ending with C1-3:a on the top.



Step 2: Unit C1, Template Layout Sheet #3 is used to sub-cut the (4) strips into (6) stacks.



Step 3: The fabric pieces are sorted by color into (4) groups of (6). Each color group is stacked beneath (1) (TLS).



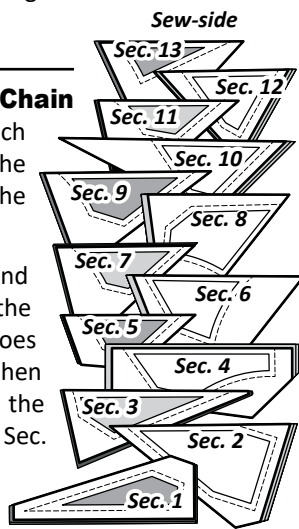
Step 4: To complete the cutting, slice through the paper and fabric on each Cut Line. The pieces are clipped together, then paired with the background fabric in the (4) Group Bags.

- Fabric C1-3:a is placed in Group Bag CG1 & CG8.
- Fabric C1-3:b is placed in Group Bag CG2 & CG7.
- Fabric C1-3:c is placed in Group Bag CG3 & CG6.
- Fabric C1-3:d is placed in Group Bag CG4 & CG5.

STACKING: UNIT C1

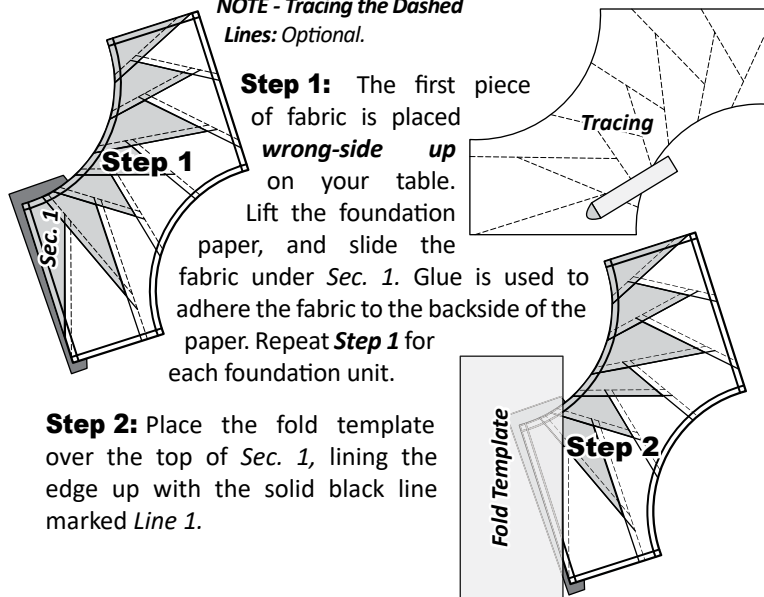
Stacking Instructions for Chain Piecing: You should have (4) bags, each with (6) template pieces stacked in the sewing order, ready to stack with the pieces in each Bag.

Stacking: Position the templates and fabric pieces facing *right-side up*, with the *sew-sides* aligned at the top. Sec. 1 does not have a sew side. The pieces are then stacked in reverse order starting with the largest # on the bottom finishing with Sec. 1 on top.

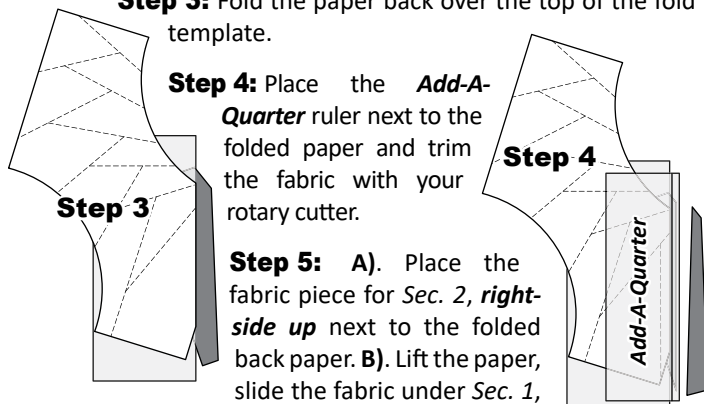


FOUNDATION PAPER PIECING: UNIT C1

NOTE - Tracing the Dashed Lines: Optional.

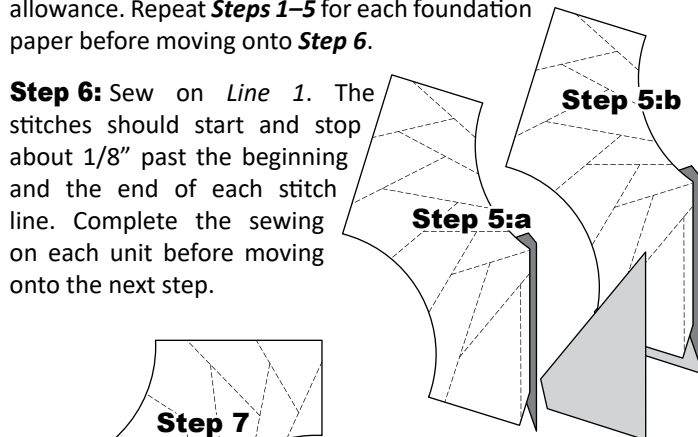


Step 3: Fold the paper back over the top of the fold template.

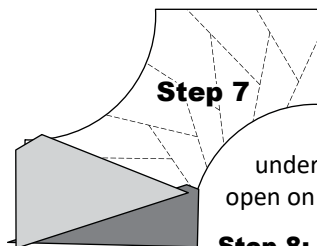


Step 5: A). Place the fabric piece for Sec. 2, *right-side up* next to the folded back paper. B). Lift the paper, slide the fabric under Sec. 1, and line the sew side up with the trimmed seam allowance. Repeat **Steps 1–5** for each foundation paper before moving onto **Step 6**.

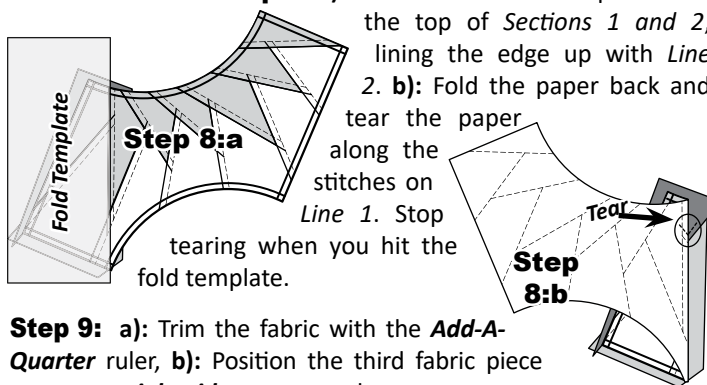
Step 6: Sew on *Line 1*. The stitches should start and stop about 1/8" past the beginning and the end of each stitch line. Complete the sewing on each unit before moving onto the next step.



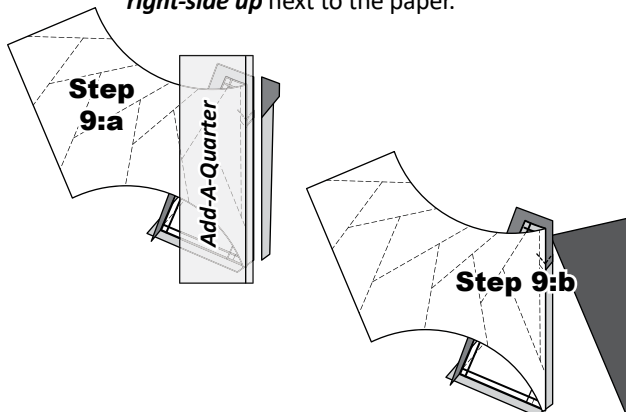
Step 7: Loosen the glue under Sec. 1, then press the fabric pieces open on the backside of each paper.

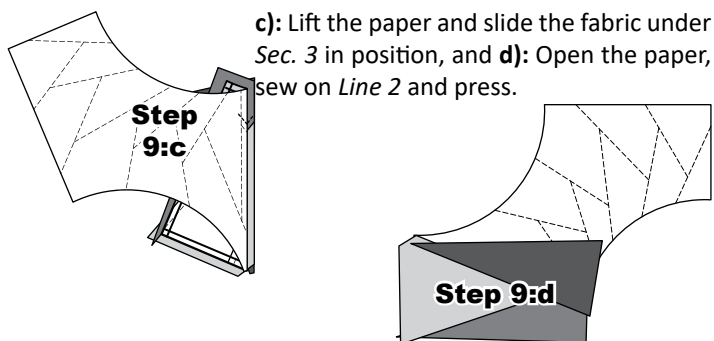


Step 8: a): Position the fold template over the top of *Sections 1 and 2*, lining the edge up with *Line 2*. **b):** Fold the paper back and tear the paper along the stitches on *Line 1*. Stop tearing when you hit the fold template.

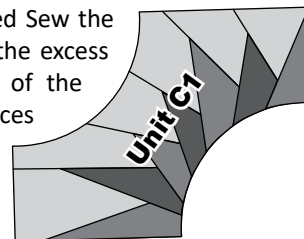


Step 9: a): Trim the fabric with the *Add-A-Quarter* ruler, **b):** Position the third fabric piece *right-side up* next to the paper.





Step 10: Continue adding the remaining fabrics to the foundation units. When the piecing is completed Sew the (TRP) lines on each unit then trim the excess fabric away around the perimeter of the foundation papers. Place these pieces back into the Unit Bag #C1.



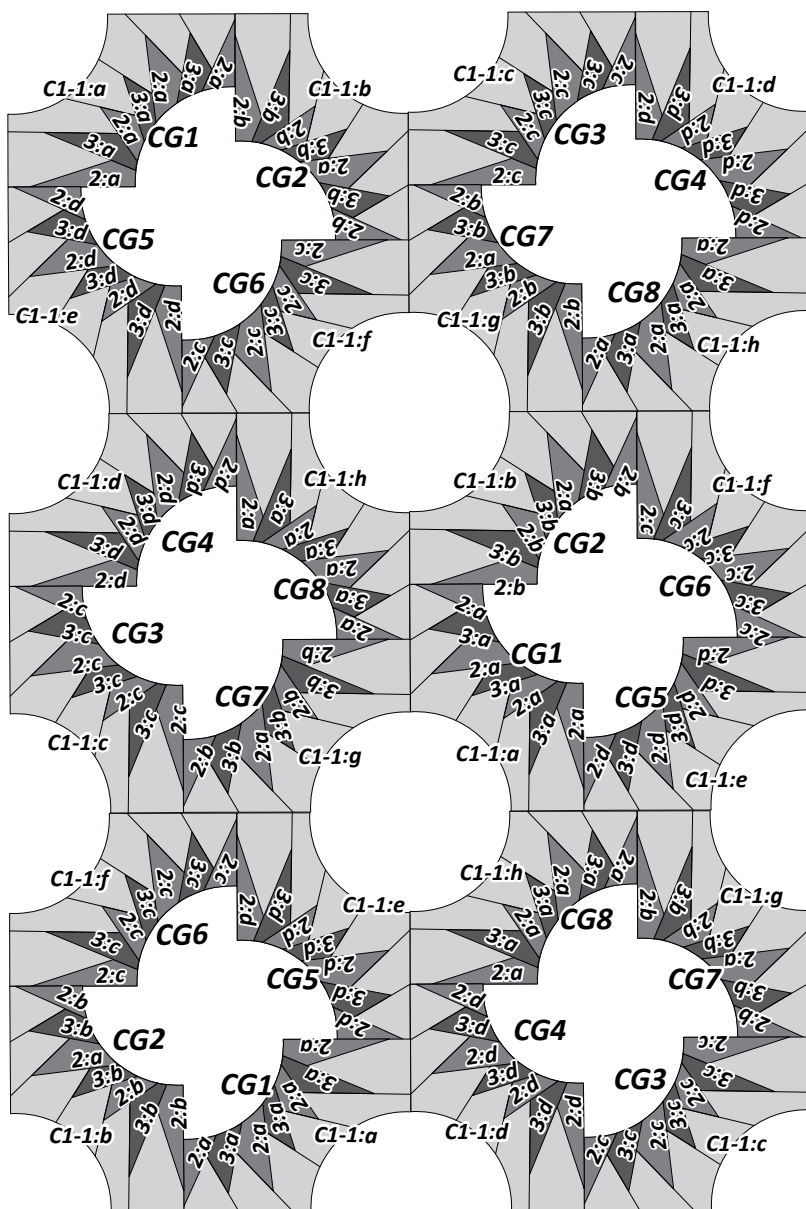
Sawtooth Center Blocks

JNQ00275C001

(24) Units = (2) Bundles

- NP 867: 4 Pages
- TP 689: 2 Pages

► Center Block Layout in Quilt, Color Groups 1 to 8



Unit C1, Yardage, of (24) units.

| GROUP-C1 FABRIC # | YARDAGE OR INCH |
|---|--|
| Fabric C1-1: (a-h) Bkg. Unit C1 (TLS) #1 | $\frac{1}{4}$ yd or (8") ea. (8) Colors (a, b, c, d, e, f, g, h) |
| Fabric C1-2: (a-d) Spikes Unit C1 (TLS) #2 | $\frac{1}{4}$ yd or (8") ea. (4) Colors (a, b, c, d) |
| Fabric C1-3: (a-d) Spikes Unit C1 (TLS) #3 | $\frac{1}{4}$ yd or (8") ea. (4) Colors (a, b, c, d) |

Block C1

On the Quilt on the cover, there is a rotational issue with the bottom left group. Follow the location listed here, instead of what is on the cover quilt. For the multicolored layout shown on the cover, this is not very important, but if you choose different color options, you will notice they don't rotate well around that block if you don't follow the pattern. Quiltster has been updated to match the rotation in the pattern. If you have a Quiltster image for your quilt, you can follow that for reference.