

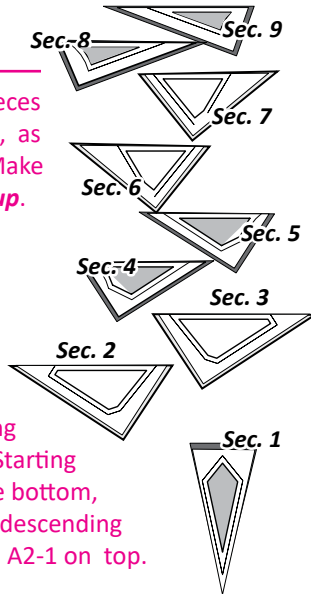
## UNIT A2, STACKING: BAG #A2

Remove the fabrics and template pieces from Bag #A2. Line the pieces up, as shown in the graphic to the right. Make sure the stacks are facing **right-side-up**.

### ► Stacking



Stack the template pieces with the sew-sides aligned at the top, facing **right-sides-up**. Starting with Sec. 9 on the bottom, stack the pieces in descending order, finishing with A2-1 on top.

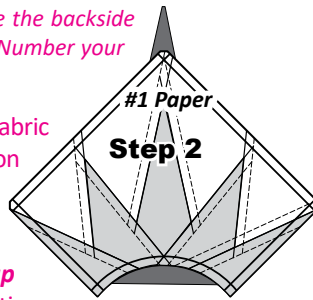


## FOUNDATION PAPER PIECING, (16) UNIT A2, BAG #A2

**NOTE - Tracing the Dashed Lines:** Trace the backside of your first piece of foundation paper. Number your papers 1-16.

**Step 1:** Place a small amount of fabric glue on the backside of the foundation paper under Sec. 1.

**Step 2:** Position the first piece of fabric in your stack **wrong-side-up** on your table. Lift the #1 foundation paper and slide the fabric under Sec. 1. The **wrong-side** of the fabric is glued to the backside of the paper.

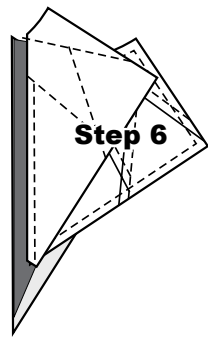
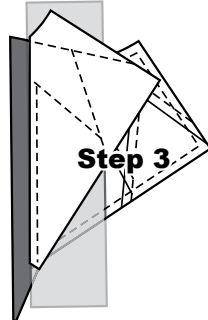
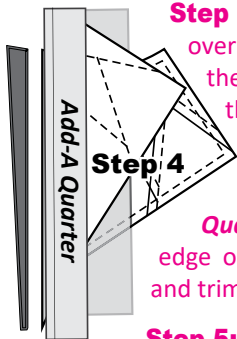


**Step 3:** Place the fold template over the top of Sec. 1, lining the edge up to Line 1. Fold the paper back over the fold template.

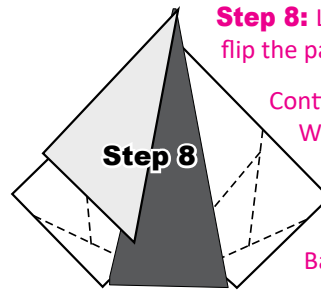
**Step 4:** Place the **Add-A-Quarter** ruler next to the folded edge on the paper, lip-side down, and trim a quarter-inch seam.

**Step 5:** Place the second piece of fabric for Sec. 2 **right-side-up** next to the folded back paper.

**Step 6:** Lift the foundation paper and slide the fabric under section Sec. 2. Line the edge of the second fabric up with the trimmed quarter-inch seam.



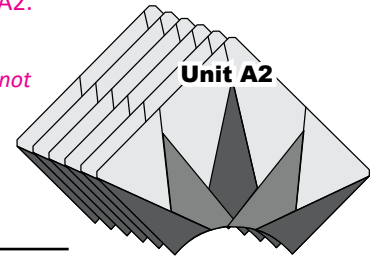
**Step 7:** Lift both pieces to your machine with the paper. Open the paper and sew on Line 1. Start at the top of Line 1 and sew to the bottom of Line 1, just off the paper. (No Graphic).



**Step 8:** Loosen the glue under section Sec. 1, flip the paper over and press.

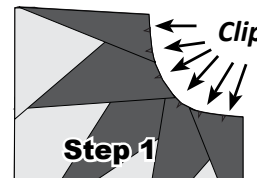
Continue adding the pieces for each section. When the piecing is finished, trim off the excess fabric and foundation paper from Unit A2. When the trimming is completed place the blocks back in Bag #A2.

**NOTE - Foundation Paper:** Do not remove the foundation paper.



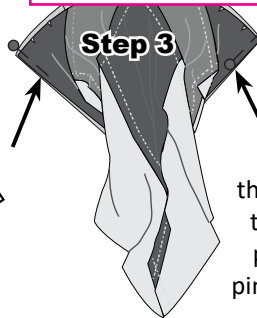
## CURVED PIECING: UNITS A1 AND A2

**NOTE - Machine Settings:** Set your machine to sew a quarter-inch seam allowance before you begin the curved piecing.



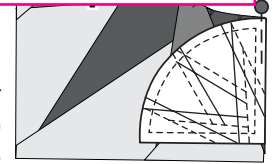
**Step 1:** Remove the foundation paper from the Unit A2. The foundation paper is left on Unit A1 to help stabilize Unit A1 during the curved piecing process. Clip along the inside curved edge on Unit A2.

**NOTE - Graphics Related to Sec. 2 and 3:** Although these instructions have been written for years, it was brought to our attention recently that Sec. 2 and 3 in the Stacking were backwards. And, that the ensuing paper piecing graphics were therefore built with adding Sec. 3 before Section 2. So, I have corrected all the graphics to match the papers.



**Step 3:** Match and pin both edges together using two (2) pins. Weave

the pins through both units along the sides to hold the edges together. The weaving provides a more secure hold than simply pinning the edges one time.



**Step 4:** Gather up the outer edge of Unit A2 in your hand and begin pleating the fabric, forcing it to fan open and match the outer curve on Unit A1.

Using a glue pen, dab a small amount of glue around the perimeter of the convex edge of Unit A1 and quickly shape, and match, the curved edges together. The glue will secure the edges to each other and in place.

**Step 5:** Position the pieces at your machine with the Center Spike Unit on top, next to the presser foot. This will result in Unit A1 being on the bottom, next to the feed dogs.

**NOTE - The Purple Thang:** The Purple Thang works great as a third finger to help hold the pieces together when sewing the curves. It can be used to smooth out pleats and hold the edges together.

