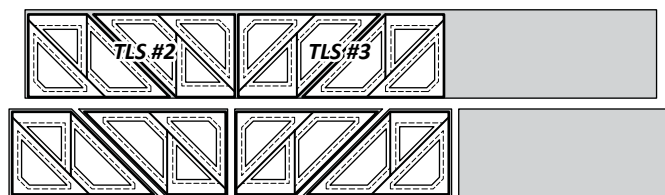


Step 2: Place the *TLS #2 and #3* on the strip stack as shown below. Use each TLS as a guide to cut (2) stacks of (2) pieces the same size of each Template. You will need to reposition the Template for the second cut.



Step 3: Restack the (4) pieces cut from each Template and place the respective TLS on top.

Step 4: Clip the TLS to the fabrics with a paper clip on each template. Then, cut the TLS and Fabrics beneath apart on the cut lines.

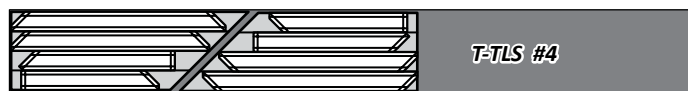


Step 5: Place the clipped stacks back into Bag B until you are ready to begin paper piecing.

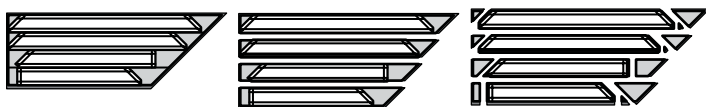
► **Fabrics AA1, T-TLS #4 and #5**

Step 1: There is (1) 5" x 42" strip and (2) 5" x 14" rectangles in Bag B cut from Fabric AA1. The 5" x 42" strip is placed right side up on your cutting table.

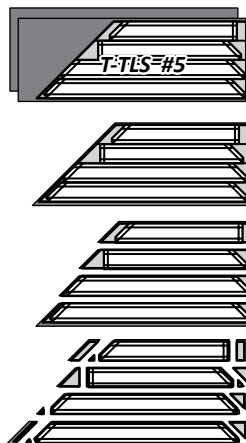
Step 2: The T-TLS #4 is placed on the strip and used as a guide to cut a piece the same size as the T-TLS. Then, it is repositioned to cut a second piece of fabric the same size.



Step 3: Restack the (2) pieces, secure the T-TLS to the top of fabric with a paper clip on each section. A small amount of repositionable glue on the back will also help keep everything in place. Then, cut the T-TLS apart on the cut lines, trim away the shaded areas, and trim the smart corners. Place the clipped stacks back into Bag B.



Step 4: Stack the (2) 5" x 14" rectangles right-side-up, place T-TLS #5 on top, then cut the fabrics to the side of the T-TLS. Secure the template with paper clips and glue, cut the T-TLS apart on the cut lines, trim away the shaded areas, and finally, trim the smart corners. Place the clipped stacks back into Bag B.



STACKING, BAG B: UNITS B1L, B2L, B3L, AND B4L

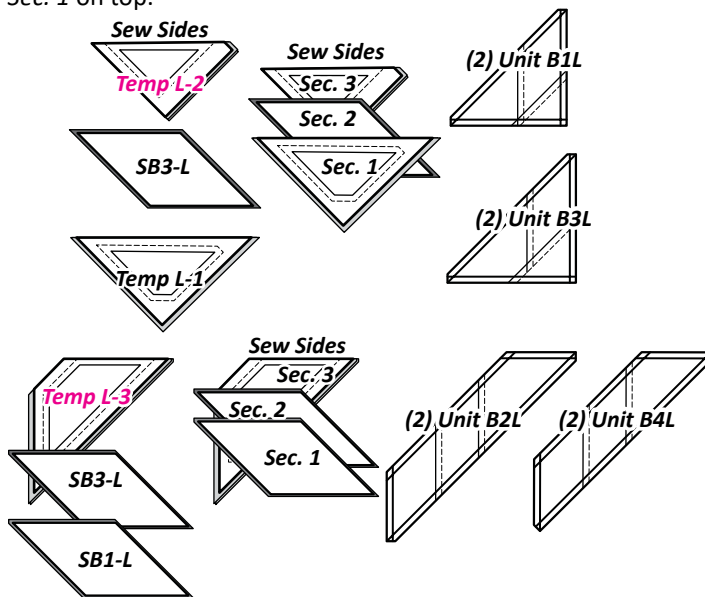
The following graphics are for the left units for B1, to B4. Right units are shown on the following page. Since the table runner is small, you only need to make (2) of each unit shown. However, the piecing for Unit B1L and B3L is identical and the piecing for B2L and B4L is identical. As a result, you will stack these together, piece at the same time, and make (4) units at once.

From Bag B, remove the Template pieces labeled as follows:

- (1) stack of (4) SB1-L, (Sec. 1 on Units B2L and B4L)
- (2) stacks of (4) SB3-L, (Sec. 2 on Units B2L and B4L and Sec 2 on Units B1L and B3L)
- The Temp L-1 Stack, (4) Pieces (Sec. 1 on Unit B1L & B3L)
- The Temp L-2 Stack, (4) Pieces (Sec. 3 on Unit B1L & B3L)
- The Temp L-3 Stack, (4) Pieces (Sec. 3 on Unit B2L & B4L)

Position the templates and fabric pieces in numerical order facing *right-side up*, with the *sew-sides* aligned at the top. *Sec. 1* does not have a sew side.

Stacking: The stacking process begins with the largest Sec. # on the bottom. The pieces are stacked in reverse order finishing with *Sec. 1* on top.



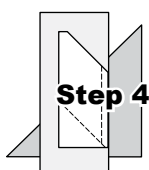
FOUNDATION PAPER PIECING, BAG B: UNITS B1L & B3L

NOTE - Tracing the Dashed Lines: Place the foundation paper onto a light table. Flip the foundation paper over and trace the dashed lines printed on the front side of the foundation paper, onto the back side of the paper.

Step 1: Flip the foundation paper over and trace the dashed lines on the back, then place a small amount of glue with your Uhu glue stick on the back side of Section 1.

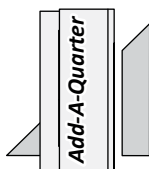
Step 2: The first piece of fabric is placed *wrong-side up* on your table. Flip the foundation paper back over and slide the fabric under *Sec. 1*. The glue is used to adhere the fabric to the back side of the paper. Repeat **Step 1** for each foundation unit B1L and B3L.

Step 3: Place the fold template over the top of *Sec. 1*, lining the edge up with the solid black line marked *Line 1*.



Step 4: Fold the paper back over the top of the fold template.

Step 5: Place the *Add-A-Quarter* ruler next to the folded paper and trim the fabric with your rotary cutter.



Step 5

Step 6: Place the fabric piece for *Sec. 2* *right-side up* next to the folded back paper. Lift the paper, and slide the fabric under *Sec. 1*, lining the sew side up with the trimmed seam allowance.

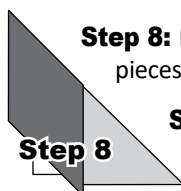


Step 6

Repeat **Steps 1–6** for each foundation paper before moving onto **Step 7**.

Step 7: Sew on *Line 1*. The stitches should start and stop about 1/8" past the beginning and the end of each stitch line. Complete the sewing on each unit before moving onto the next step.

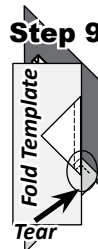
NOTE - Trimming the Threads: Sewing past the ends of your sew line makes it possible to cut the thread ends off each time you trim with your *Add-A-Quarter* ruler.



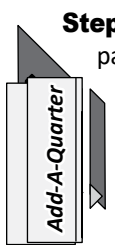
Step 8

Step 8: Loosen the glue under *Sec. 1*, then press the fabric pieces open on the back side of each paper.

Step 9: Position the fold template over the top of *Sections 1 and 2*, lining the edge up with *Line 2*.



Step 9

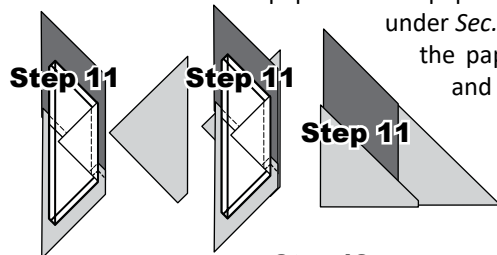


Step 10

Step 10: Fold the paper back and tear the paper along the stitches on *Line 1*. Stop tearing when you hit the fold template.

NOTE - Add-A-Quarter Use: Tearing the paper along the stitches allows the fabric to relax, making it possible to place the *Add-A-Quarter* ruler along the folded edge.

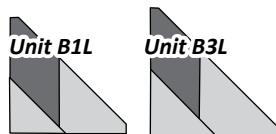
Step 11: Trim the fabric with the *Add-A-Quarter* ruler, and position the third fabric piece *right-side up* next to the paper. Lift the paper and slide the fabric under *Sec. 3* in position. Open the paper, sew on *Line 2*, and press.



Step 11

Step 12: Continue adding the remaining fabric pieces to each section on the foundation papers to complete the paper piecing.

Step 13: Trim the excess fabric away around the perimeter of the foundation paper. Place the pieces back into Bag B. Leave the foundation papers on at this time. They will be removed at final assembly.

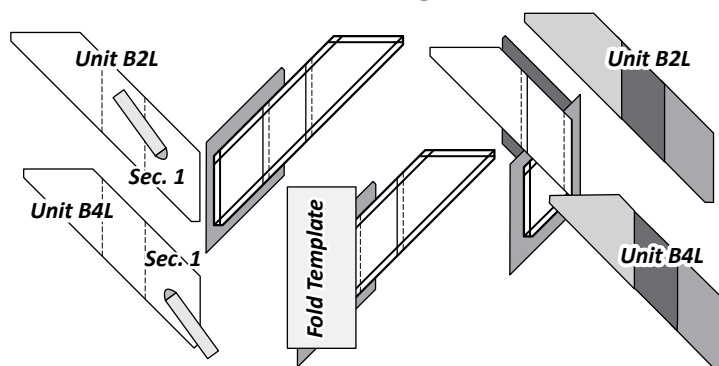


Step 13

Step 14: Repeat the previous steps to complete the paper piecing for Units B2L and B4L. You will not have to tear away the papers to add *Sec. 3* on Units B2L and B4L as there are no overlapping seams.

NOTE - Removing paper: Foundation papers are not removed at this time.

► Unit B2L and B4L Piecing Graphics



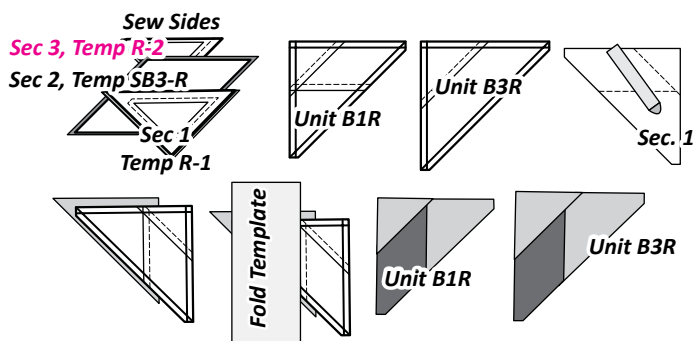
■ STACKING AND FOUNDATION PAPER PIECING UNITS B1R, B2R, B3R, AND B4R

The process for stacking, preparing, and piecing Units B1R, B2R, and B3R is identical to B1L, B2L, B3L, and B4L. A little information and some graphics is provided below to get you started. When you are finished, leave the papers on, clip the units together and place back into Bag B until final assembly.

From Bag B, remove the Template pieces labeled as follows:

- (1) stack of (4) SB1-R, (Sec. 1 on Units B2R and B4R)
- (2) stacks of (4) SB3-R, (Sec. 2 on Units B2R and B4R and Sec 2 on Units B1R and B3R)
- The Temp R-1 Stack, (4) Pieces (Sec. 1 on Unit B1R & B3R)
- The Temp R-2 Stack, (4) Pieces (Sec. 3 on Unit B1R & B3R)
- The Temp R-3 Stack, (4) Pieces (Sec. 3 on Unit B2R & B4R)

► Unit B1R and B3R Piecing Graphics



► Unit B2R and B4R Piecing Graphics

