

NOTE - Removing Papers: The foundation papers are not removed until you are ready to assemble the quilt top.

CURVED PIECING S-CURVES

The following units are joined using a curved seam called an S-Curve, which is created when a curve to one direction is followed by a curve going in the opposite direction. Sewing an S-curve is a two-step process where the first half of the curve is sewn, then the pieces are flipped over and the other half of the curve is sewn. The point where you start or stop sewing is called a Transition Point and in a Quiltworx pattern we have marked this point with a TRP line. On the following graphics, we have identified which TRP lines are referred to as Transition Points with the letters (TP).

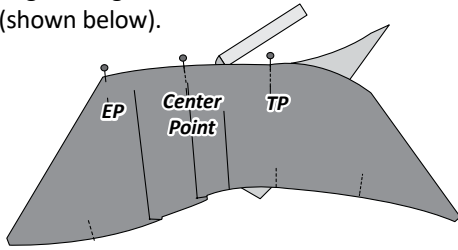
► Illustration 1

Position the units as shown in Illustration 1 on a design wall before you begin to assemble the units.

► Illustration 2:

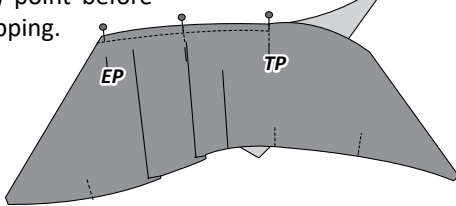
Step 1: Remove the foundation papers from the D1L Units. **T-Template D-2** is paired with Unit D1L. The pieces are placed with **right-sides-together**.

Step 2: Match and glue the end points (EP) along the edges as shown in Illustration 2 on the following page. Then glue the raw edges along the curved seams between the (EP) and the (TP) points (shown below).



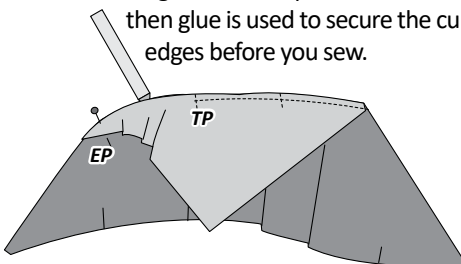
► Illustration 1

Step 3: The sewing begins at the point marked (EP), then continues to the second (TP) point before stopping.



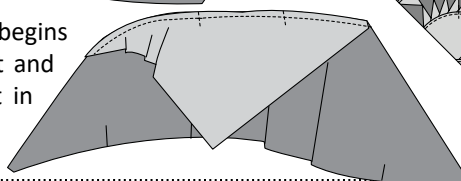
► Illustration 2

Step 4: The pieces are then flipped over. The registration lines are matched and pinned along the curved edge. The end points are matched, then glue is used to secure the curved edges before you sew.



► Illustration 3

Step 5: The sewing begins again at the (EP) point and ends at the (TP) point in the center.



► Illustration 4

Step 6: The seam is pressed towards the T-Template.

Step 7: To sew the Geese to **T-Templates D-4 and D-3**, a similar process is used, you just don't need to flip the pieces over. Remove the foundation paper from the Geese Units. Add the Geese to **T-Template D-3**, then add **T-Template D-4** to the Geese. As you join each unit, match and pin the (TRP) lines, then glue both ends and the curved edges. Since these are relatively easy curves, we chose not to show any graphics. The seams are pressed towards the T-Templates as shown in Illustration 2.

► Illustration 3:

Step 8: The T-Templates and Geese Blocks are joined into rows. The seams for the Geese Units are pressed counter clockwise on the wrong-side of the fabric. The seams for T-Templates D-5, D-6 and D-7 are pressed clockwise on the wrong-side of the fabric.

► Illustration 4: Final Assembly

Step 9: The rows are joined to complete the corner units. The inside seams are pressed towards Units D1R & D1L. The outside seams are pressed towards the D-5, D-6, & D-7 border templates.

Step 10: The rest of the assembly process happens as part of the General Assembly Instructions in the Introduction Booklet.